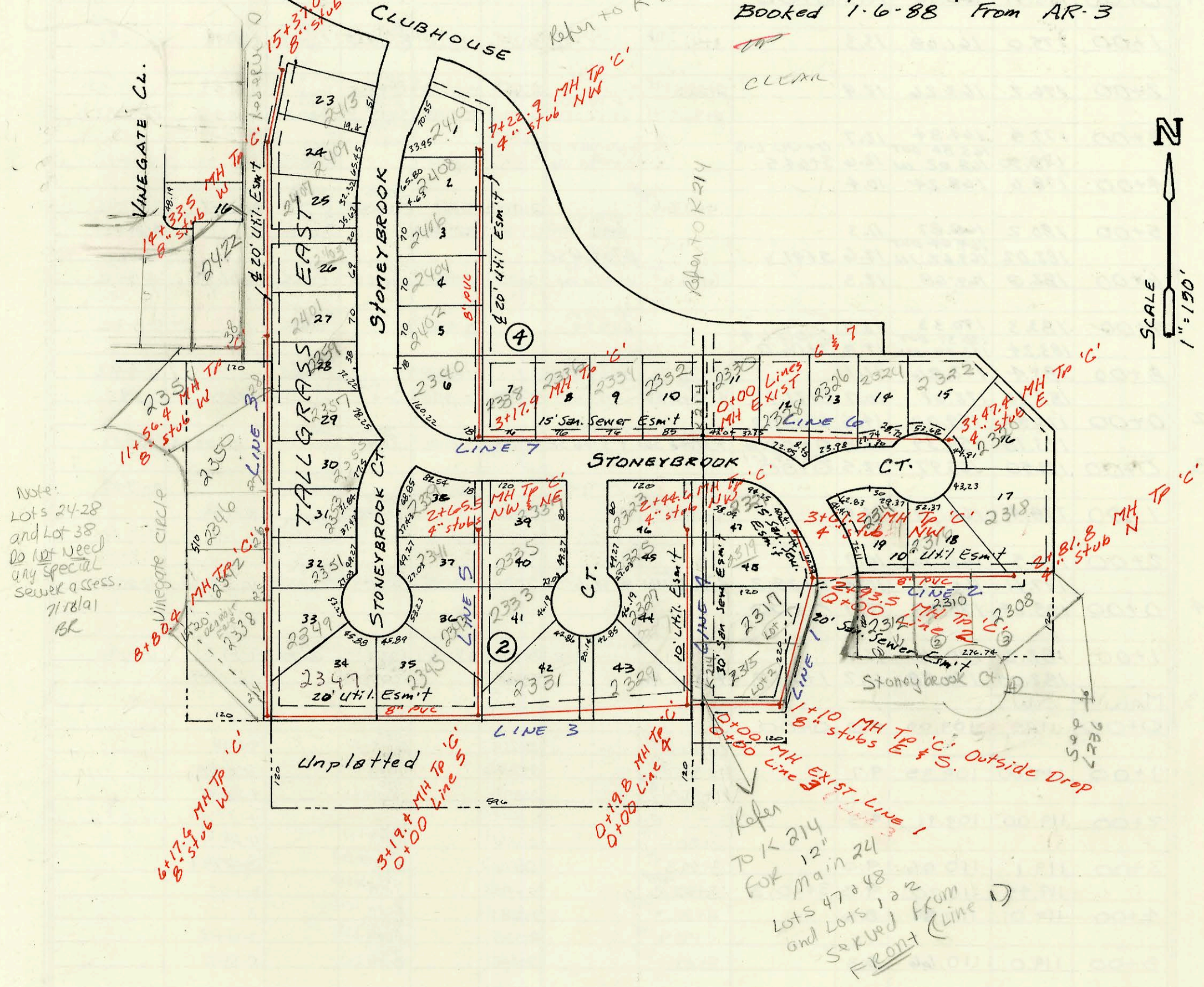
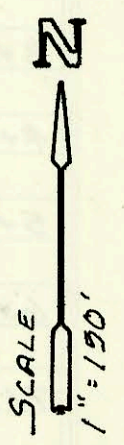


All Lines Rel. on R.L.  
11/5/87

LAT 6, MAIN 24, W.I.S.  
468-76-245-81662-000-000-001  
Built By Utility Contr.  
Booked 1-6-88 From AR-3



Note:  
Lots 24-28  
and Lot 38  
do not need  
any special  
sewer assess.  
7/18/01  
BC



Refer  
to K 214  
for  
Main 24  
Lots 47 & 48  
and Lots 1 & 2  
served from  
Front (Line 1)

CONSTRUCTION RECORD							SERVICE RECORD					
STATION	ELEVATION		Depth	MANHOLE	4-INCH "Y" BRANCHES		No. of Permit		House Number		DATE OF PERMITS	
	Ground	Grade			North West	South East	North West	South East	North West	South East	North West	South East
LAT 6 LINE 1	MAIN	24.15										
	0+00	207.86	190.76	17.1	EXIST 0+00							
	1+00	208.5	191.30	17.2		50R 35 H38.0 TAP	9-1990-1		2315 Stoneybrook		4-5-91	
		210.49	198.96 IN	19.1	1+10.0	8" stub E			2319 Stoneybrook		11-09-89	
	2+00	209.9	199.32	10.6		2+17.5 TAP	24267		2319 Stoneybrook			
		210.83	199.70 OUT 199.87 IN	11.1	0+05 L-2 2+93.5				2319 Stoneybrook		8-14-89	
	3+00	210.5	199.98	10.5		3+48.2 TAP	23753		2331 Stoneybrook		6-29-88	
LINE 2	0+00	211.09	200.99	10.1	3+61.2	4" stub NW	20959		2331 Stoneybrook		6-29-88	
	0+00	210.83	201.07	9.8	2+93.5 L-1 0+00				2314 Stoneybrook		6-17-88	
	1+00	211.5	201.88	9.6		1+05.0 TAP	20892		2312 Stoneybrook		5-22-90	
		213.2	202.68	10.5		1+65 TAP	19542	25277	2316 N Stoneybrook	2310 Stoneybrook	11-6-87	11-09-89
	2+00	213.80	203.34	10.5		2+81.8	19819	25792	2318 Stoneybrook	2308 Stoneybrook	11-05-87	7-25-90
LINE 3	0+00	207.86	193.64	14.2	EXIST 0+00							
		208.37	193.72 OUT 193.75 IN	14.7	0+08 L-4 0+19.8							
	1+00	208.5	199.45	14.1		0+92.8 TAP	22731		2329 Stoneybrook		3-15-89	
	2+00	209.1	195.31	13.8					2331 Stoneybrook		8-8-89	
	3+00	209.7	196.18	13.5		2+73.4 TAP	23726					
		209.71	196.35 OUT 196.82 IN	13.4	0+00 L-5 3+19.4							
	4+00	210.2	197.42	12.8		4+08.4 TAP	22478		2345 Stoneybrook		1-24-87	
	5+00	210.8	198.17	12.6		4" SDR 35 6+28.6 tap	92-906-1		2328 Vineyard		1-15-92	
		211.4	198.92	12.5		5+21.6 TAP	82901		2347 Stoneybrook		4-12-89	
	6+00	211.95	199.05 OUT 199.35 IN	12.9	6+17.6	8" stub W						
	7+00	212.0	200.12	11.9								
		212.8	201.04	11.8		7+86.4 tap	92-3530-1	3332	2342 Vineyard	2349 Stoneybrook	3-12-92	6-19-89
	8+00	213.74	201.79	12.7	8+80.4	4" SDR 35 8+72.9 tap	71-27376-1	24129	2346 N Vineyard	2351 Stoneybrook	7-16-91	10-18-89
	9+00	213.5	201.97	11.5		4 PUC 40 10+21.4 tap	9+05.0 TAP	21155	2350 Vineyard	2353 Stoneybrook	7-26-88	7-26-88
	10+00	214.5	202.89	11.6		10+69.4 TAP	1972	24266	2355 Stoneybrook	2357 Stoneybrook	1-31-92	11-09-89
		215.5	203.81	11.7		4" SDR 40 PUC 10+79.4 tap	10+41.4 TAP	23751	2354 Vineyard	2359 Stoneybrook	8-14-89	8-14-89
	11+00	216.19	204.33 OUT 204.48 IN	11.9	11+56.4	8" stub W	11+50.7 TAP	19945	2401 Stoneybrook		1-12-88	
	12+00	216.3	205.00	11.3		4" SDR 40 PUC 12+63.4 tap	12+57.4 TAP	71-37204-1	2422 Vineyard	2403 Stoneybrook	11-13-91	8-14-89
	13+00	216.5	206.18	10.3			13+44.4 TAP	20438	2407 Stoneybrook		4-12-88	
	14+00	217.5	207.37	10.1			14+25.5	19541	2407 Stoneybrook		11-06-87	
		217.71	207.77 OUT 207.91 IN	9.9	14+33.5	8" stub W			2407 Stoneybrook			
	15+00	218.8	208.37	10.4			15+15.0 TAP	19944	2407 Stoneybrook		1-12-88	
LINE 4	0+00	218.86	208.63	10.2	15+37.0	8" stub NW						
	0+00	208.37	197.72	10.7	0+14.8 L-3 0+00				2347 Stoneybrook		11-06-89	
	1+00	209.0	199.21	9.8				19520	2385 Stoneybrook		12-03-87	
	2+00	210.2	200.70	9.5				19821	2328 Stoneybrook		11-06-87	
LINE 5	0+00	211.26	201.37	9.9	2+44.6	4" stub NW	19527		2328 Stoneybrook		11-06-87	
	0+00	209.71	196.81	12.9	3+19.4 L-3 0+00							
	1+00	210.5	198.37	12.1		1+34.5 TAP	20207		2373 Stoneybrook		3-3-88	
	2+00	211.5	199.94	11.6		1+87.5 TAP	11+50.5 TAP	21135	2341 Stoneybrook	2333 Stoneybrook	7-22-88	7-22-88
		211.72	200.96	10.8	2+65.5	4" stub NW	19518	19817	2337 Stoneybrook	2335 Stoneybrook	11-15-87	12-07-87
LINE 6	0+00	212.27	197.26	15.0	EXIST 0+00				2337 Stoneybrook	2337 Stoneybrook	4-13-88	12-04-87
	1+00	211.5	198.88	12.6		0+44.0 TAP	20492		2330 Stoneybrook		4-18-88	
	2+00	211.6	200.51	11.1		1+29.0 TAP	20483		2328 Stoneybrook		4-18-88	
		212.0	202.13	9.9		1+85.4 TAP	21154		2326 Stoneybrook		7-25-88	
	3+00	212.67	202.90	9.8	3+47.4	4" stub E	19476		2322 Stoneybrook		11-02-87	
LINE 7	0+00	212.27	197.28	15.0	EXIST 0+00				2322 Stoneybrook		4-13-88	
	1+00	211.5	198.78	12.7		1+30.0 TAP	88858		2324 Stoneybrook		4-5-89	