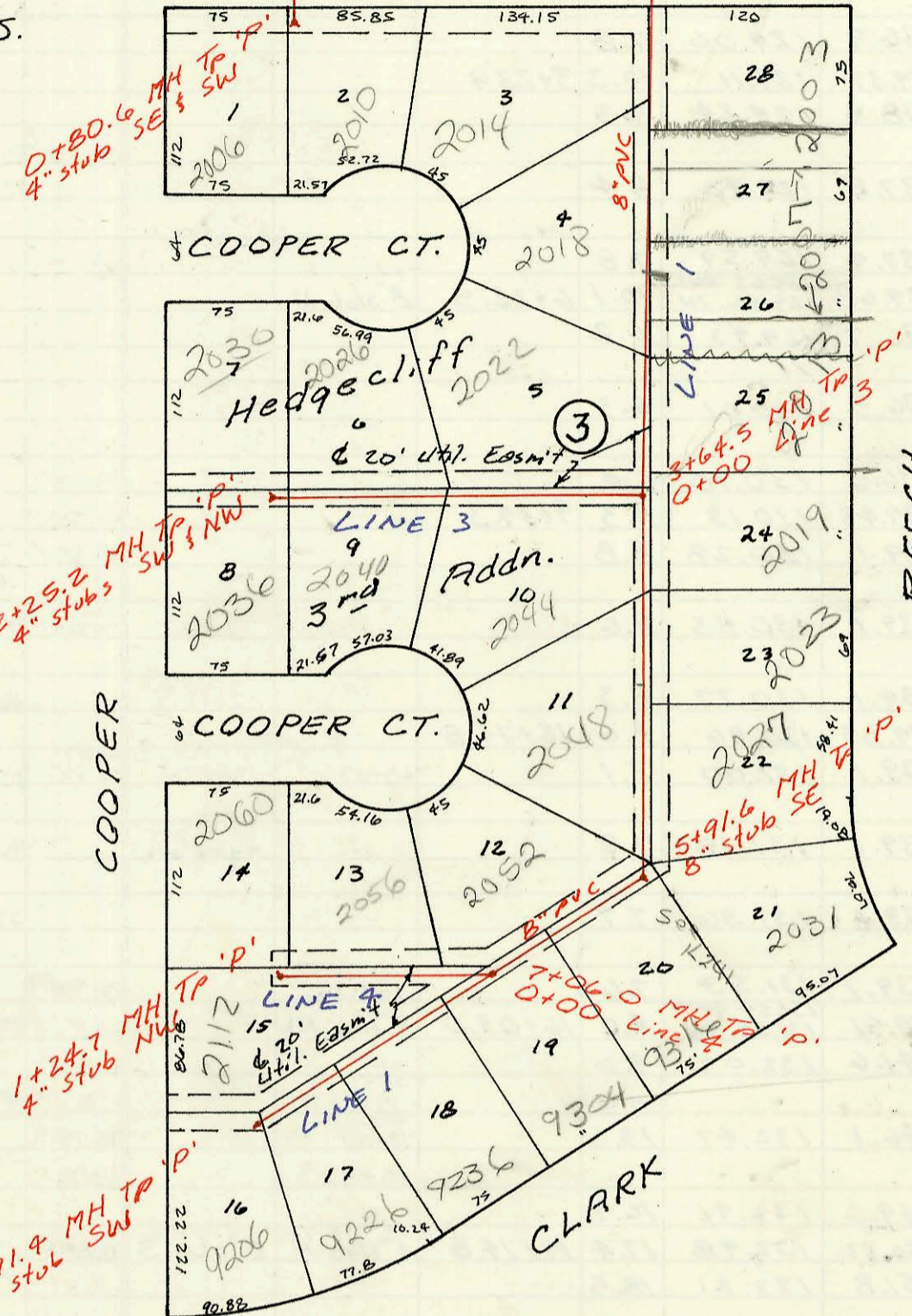
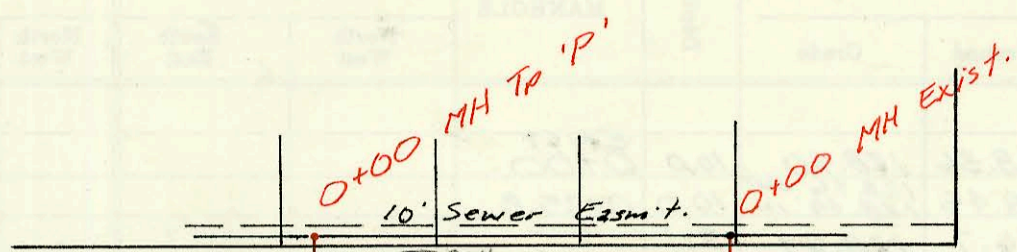
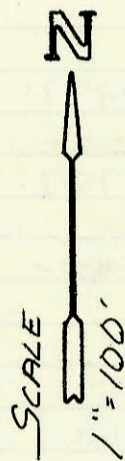
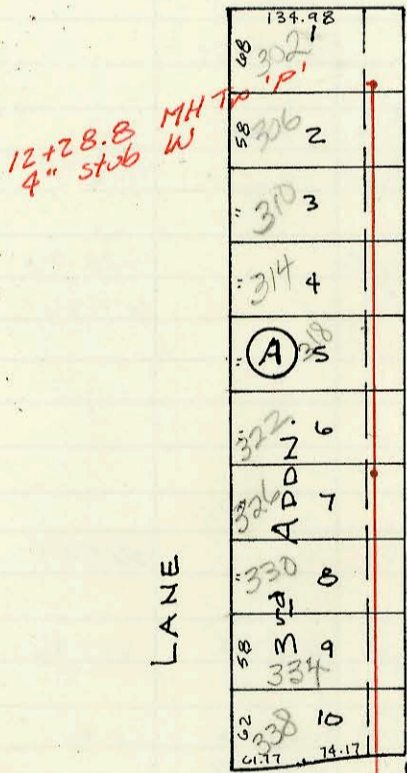


LAT 93, WAR INDUSTRIES SEWER  
468-76-245-81688-000-000-001  
Built By MID-STATES CONST.  
Booked 1-8-88 From AR-9-55.



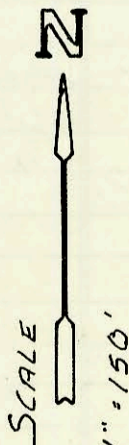
MAPLE ST.



UNIVERSITY

MAPLE

TAFT



fee in lieu of lateral  
due to connect to  
EXIST Lat CHRISTINE 2nd add

LAT 43, MAIN 4, SW1  
468-76-245-81743-000-000-001  
Built By Stannard Const.  
Booked 2-22-88 from BR-77

ZUY CHRISTINE 2nd  
3+40.3 MH TP 'P'

Fee in lieu of Lateral  
due to connect to  
EXIST Lat CHRISTINE 2nd add  
per G. Ram  
3/17/99

Fee in lieu of  
Lateral at current  
Rate Reg'd  
12/3/08

CONSTRUCTION RECORD							SERVICE RECORD					
STATION	ELEVATION		Depth	MANHOLE	4-INCH "Y" BRANCHES		No. of Permit		House Number		DATE OF PERMITS	
	Ground	Grade			North West	South East	North West	South East	North West	South East	North West	South East
LAT 9 LINE 1 0+00	172.41	160.10	12.3	EXIST. 0+00								
1+00	175.0	161.68	13.3		1+16.0 TAP	4" SPR 35 1738 tap	21347	935108-7	2014 Cooper Ct	2003 Beech	8-22-88	3-12-93
2+00	176.2	163.26	12.9		2+22.5 TAP	4" PVC 40 2+22.5 tap	23655	93-29396-7	2018 Cooper Ct	2007 S Beech	7-31-89	11-12-93
3+00	177.5	164.84	12.7		2+94.0 TAP	4" PVC 40 2+94.0 tap	26130	93-31955-7	2022 Cooper Ct	2013 Beech	9-17-90	12-17-93
	178.50	165.86 OUT 168.02 IN	12.6	0+00 L-3 3+64.5		4" PVC 40 3+94.1 tap		91-37101-7		2019 Beech		11-12-91
4+00	178.6	168.24	10.4									
5+00	180.2	168.87	11.3		4+73.6 TAP	4" PVC 40 5+16.6 tap	21403	951091-7	2048 Cooper Ct	2023 Beech	8/30/88	11-27-95
	182.02	169.44 OUT 169.62 IN	12.6	5+91.6		8" stub SE		92-2790-7		2021 Beech		8-20-92
6+00	182.0	169.68	12.3		6+44.6 TAP	4" PVC 40 6+27.6 tap	20907	92-4846-7	2052 Cooper Ct	9316 Clark	6-21-88	4-7-92
7+00	183.3	170.33	13.0			4" SPR 35 6+95.4		92-40631-7		9304 Clark		11-3-92
	183.24	170.37 OUT 171.79 IN	12.9	0+00 L-4 7+06.0								
8+00	183.4	172.26	11.1		4" SPR 35 7+49.4 tap	4" PVC 40 8+49.4 tap	92-40629-7	93-18165-7	2026 Clark	9236 Clark	9-27-94	7-1-93
LINE 2 0+00	173.54	159.00	14.5	0+00	4" SPR 35 8" stub SW	4" PVC 40 4" stub SE	93-212561-7	93-21196-7	2056 Cooper Ct	2010 Cooper Ct	12-20-93	12-17-93
LINE 3 0+00	173.18	159.39	13.8	0+80.6 3+69.5 L-1 0+00								
1+00	178.4	166.37	12.0		0+74.0 TAP			22558	2041 Cooper Ct			2-13-89
2+00	177.5	166.76	10.7		1+43.2 TAP		21804	20415	2026 Cooper Ct	2042 S. Cooper Ct	10-31-88	4-7-88
LINE 4 0+00	177.11	166.86	10.3	2+25.2	4" stub NW	4" stub SW	20985	23036	2030 Cooper Ct	2036 Cooper Ct	6-28-88	4-27-89
1+00	182.2	170.78	11.4		0+71.7 TAP	4" SPR 35 1+14.7 tap	26059	93-8538-7	2056 Cooper Ct	2112 S. Cooper Ct	9-4-90	4-14-93
	182.05	170.88	11.2	1+24.7	4" stub NW		91-22055-7		2005 Cooper Ct		12-12-91	
LAT 43, Main 4 0+00	117.95	109.00	9.0	0+00								
1+00	119.00	109.35	9.7		0+96.0 TAP		21261		438 Maple LN		8-8-88	
2+00	119.00	109.71	9.3		1+31.0 TAP		21263		434 Maple LN		8-8-88	
3+00	119.1	110.06	9.0		1+91.3 TAP		20596		430 Maple LN		4-29-88	
4+00	119.0	110.37	8.6		2+50.3 TAP		20567		422 Maple LN		4-28-88	
5+00	119.45	110.20	9.3	3+40.3	3+22.3 TAP		20760		422 Maple LN		5-27-88	
6+00	119.0	110.66	8.3		3+82.3 TAP		20388		418 Maple LN		4-1-88	
7+00	119.3	111.08	8.5	6+45.9	4+24.3 TAP		20255		410 Maple LN		3-10-88	
8+00	119.3	111.55	7.8		4+92.9 TAP		20132		410 Maple LN		2-19-88	
9+00	119.7	111.85	7.9		5+29.9 TAP		20133		406 Maple LN		2-19-88	
10+00	120.5	112.17	8.3		6+00.9 TAP		20887		402 Maple LN		4-1-88	
11+00	121.0	112.50	8.5		7+51.9 TAP		22461		338 Maple LN		1-23-89	
12+00	121.3	112.83	8.5		7+82.9 TAP		21262		334 Maple LN		8-8-88	
1+00	119.7	111.85	7.9		8+66.2 TAP		21566		329 Maple LN		9-26-88	
2+00	120.50	111.94	8.6	9+29.2	9+06.2 TAP		21527		326 Maple LN		9-19-88	
3+00	120.5	112.17	8.3		9+65.2 TAP		21526		322 Maple LN		9-10-88	
4+00	121.0	112.50	8.5		10+42.8 TAP		22080		318 Maple LN		11-23-88	
5+00	121.3	112.83	8.5		10+72.8 TAP		22097		314 Maple LN		11-24-88	
6+00	121.73	112.92	8.8	12+28.8	11+51.8 TAP		22460		310 Maple LN		1-23-89	
7+00	121.73	112.92	8.8	12+28.8	11+92.8 TAP		22774		306 Maple LN		3-20-89	
LAT 6, LINE 7 (CONT)	211.5	200.27	11.2		4" stub W		22778		302 Maple LN		3-24-89	
2+00	211.5	200.27	11.2		tap 2+13.9		19821		2336 Stoneybrook			
3+00	211.6	201.77	9.8		tap 2+71.9		19818		2338 Stoneybrook		12-4-87	
4+00	211.71	202.04 OUT 202.60 IN	9.7	3+17.9	3+75.9		19813		2340 Stoneybrook		12-3-87	
5+00	212.8	203.66	9.1		4+85.9 TAP		20359		2402 Stoneybrook		12/03/87	
6+00	213.9	204.95	9.0		5+51.9 TAP		19242		2404 Stoneybrook		10-06-87	
7+00	214.9	206.24	8.7		6+01.9 TAP		19228		2406 Stoneybrook		10/05/87	
8+00	216.0	207.52	8.5		6+62.9 TAP		20535		2408 Stoneybrook		2-3-89	
9+00	216.87	207.82	9.1	7+22.9	8" stub NW		19812		2410 Stoneybrook		12/03/87	