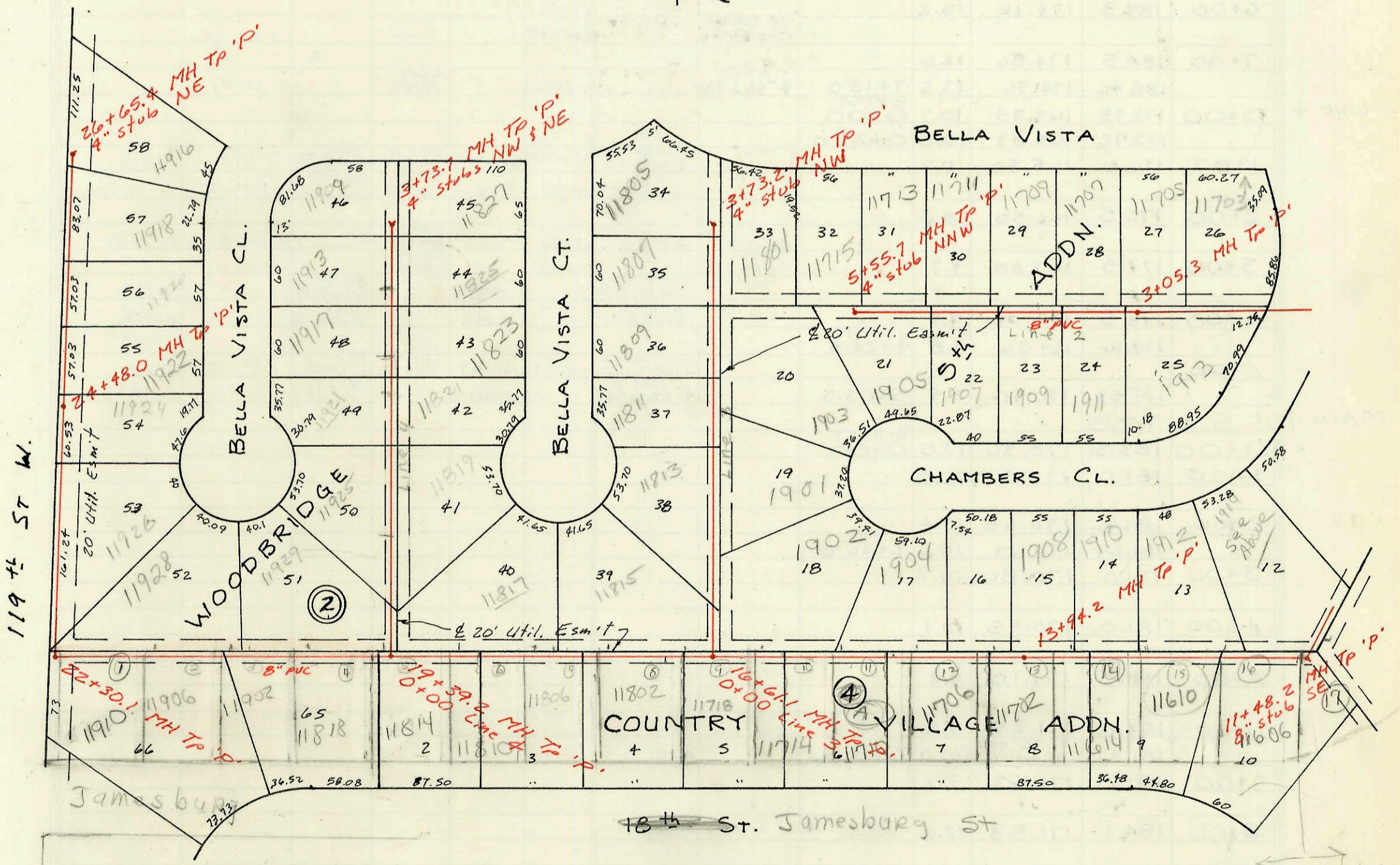


LAT 24, MAIN 12, SW INTERCEPTOR
 468-76-245-81733-000-000-001
 BUILT BY MID STATES CONST.
 BOOKED 2-24-88 FROM BR-68

9 stubs



2001-00965-412301-11929 w Bella Vista Cir - Reddi Rootr 4" sch40 - Replace 4' Bldg Sewer, middle, 45' Back from house

CONSTRUCTION RECORD

SERVICE RECORD

Table with columns: STATION, ELEVATION (Ground, Grade), Depth, MANHOLE, 4-INCH 'Y' BRANCHES (North West, South East), No. of Permit (North West, South East), House Number (North West, South East), DATE OF PERMITS (North West, South East). Rows include stationing from 0+00 to 21+00 and 0+00 to 1+00.

LAT 2
LINE 1

LINE 2

LINE 3

(Cont. on K-239 Form #192-020 (July, 1981)
92-44635-7 12-9-92 11902 W. Jamesburg - riser station 6+77.9 per inspector.
93-3813-7 11602 Bella Vista - riser station 6+77.9 per inspector.
93-8210-7 1924 Chambers - 4" PVC #40; Tied to riser riser was 2' off of measurement; 66.7 N. of Manhole (7+42.0 TAP) Deep