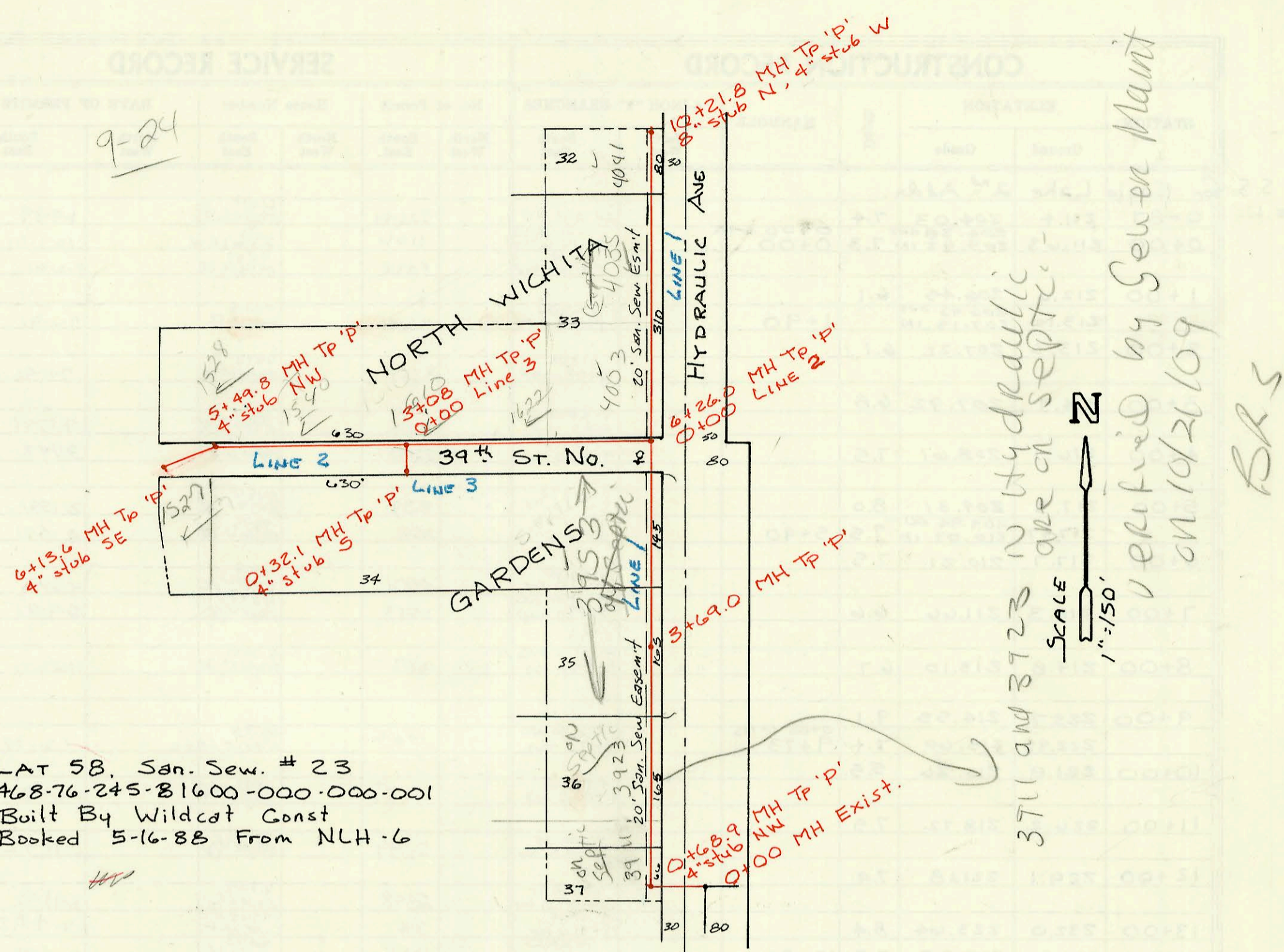


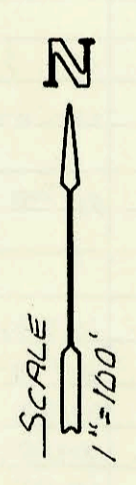
9-24



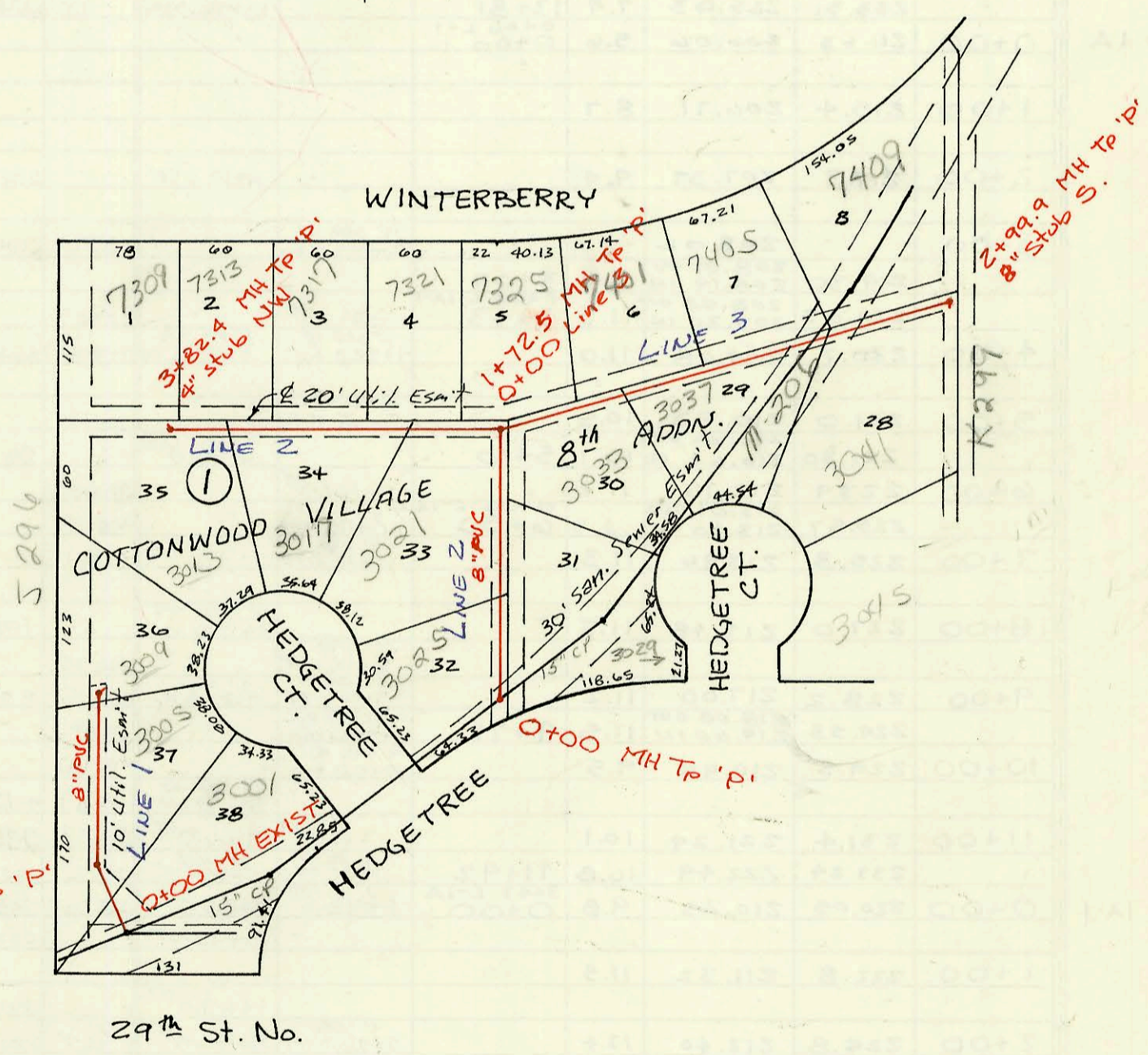
LAT 58, San. Sew. # 23
 468-76-245-81600-000-000-001
 Built By Wildcat Const
 Booked 5-16-88 From NLH-6

3711 and 3723 N Hydraulic are on septic - verified by Sewer Maint on 10/2/09
 BR 5

LAT 42, MAIN 7, S.S # 23
 468-76-245-81810-000-000-001
 Built By Mid-States Const
 Booked 6-10-88 From DCD-196



1+64.6 MH Tp 'P' 4" stub NE
 0+47.6 MH Tp 'P'



29th St. No.

