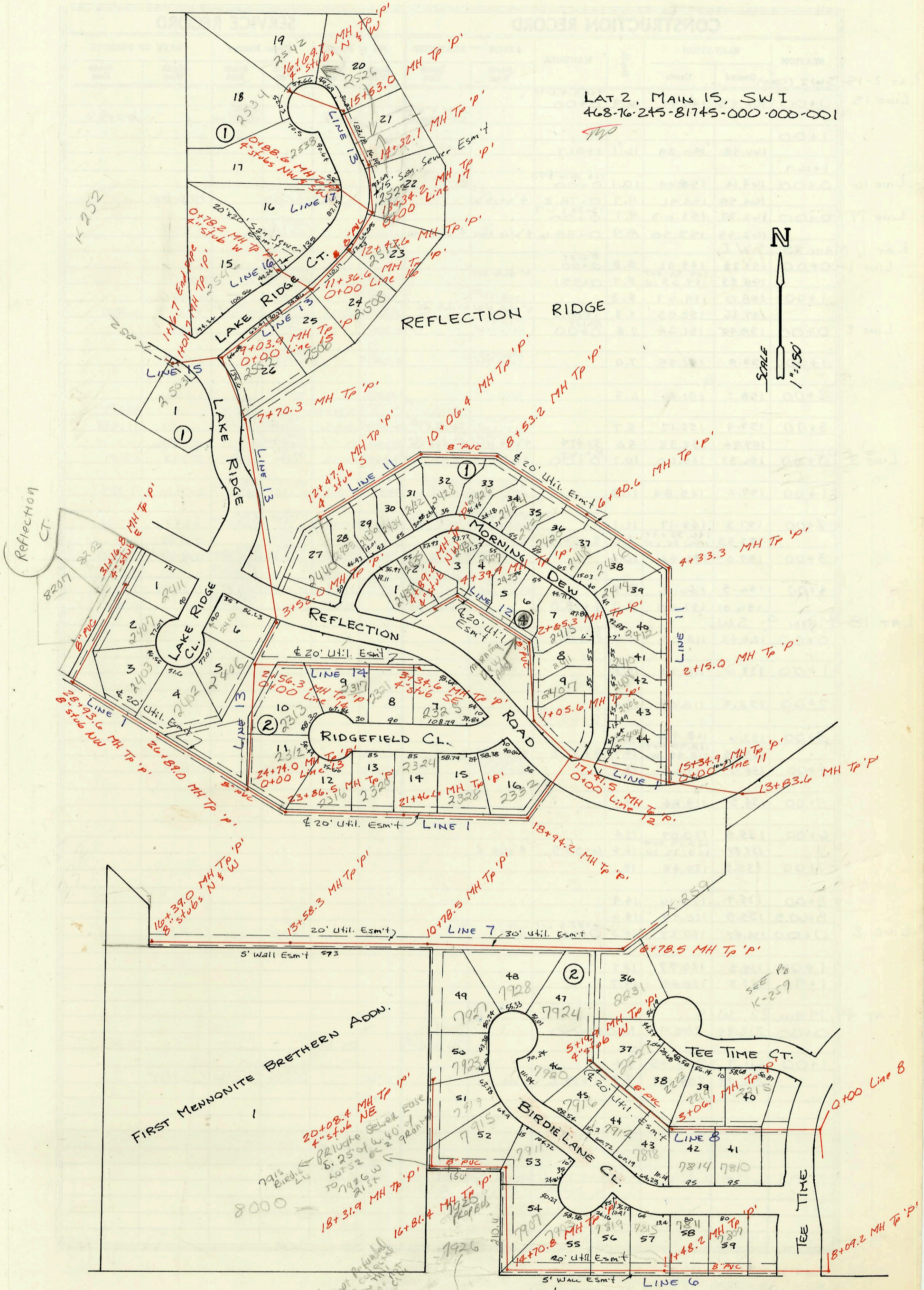


LAT 2, MAIN 15, SW I  
468-76.245-81745-000-000-001



(Note: Utility Dept. Permitted before final plat. All utility lines shown on this plat are to be installed in accordance with the City of Springfield, Missouri, Utility Code.)

Fixtures for 1st floor to be paid 9/25/2000

SEE Pgs K-259

21st St. No.

CONSTRUCTION RECORD							SERVICE RECORD					
STATION	ELEVATION		Depth	MANHOLE	4-INCH "Y" BRANCHES		No. of Permit		House Number		DATE OF PERMITS	
	Ground	Grade			North West	South East	North West	South East	North West	South East	North West	South East
LAT 2-15-5 LINE 11 (CONT)	5+00	157.8	147.10	10.7								
	6+00	158.6	147.91	10.7								
		158.57	148.24 OUT 149.14 IN	10.3	6+40.6							
	7+00	159.1	149.43	9.7								
	8+00	160.0	149.92	10.1								
		160.30	150.18 OUT 150.19 IN	10.1	8+53.2							
	9+00	160.6	150.35	10.3								
	10+00	161.0	150.69	10.3								
		160.93	150.71 OUT 150.73 IN	10.2	10+06.4							
	11+00	161.5	151.54	10.0								
	12+00	162.0	152.35	9.7								
		162.35	152.74	9.6	12+47.9							
LINE 12	0+00	161.05	146.80	14.3	17+41.5 L-1 0+00							
	1+00	161.9	147.43	14.5								
		161.59	147.46 OUT 147.55 IN	14.1	1+05.6							
	2+00	159.6	148.14	11.5								
		159.04	148.54 OUT 148.72 IN	10.5	2+65.3							
	3+00	159.5	149.19	10.3								
	4+00	160.8	150.55	10.3								
		161.54	151.09 OUT 151.15 IN	10.5	4+39.9							
		162.60	152.08	10.5	4+39.2							
LINE 13	0+00	162.91	146.88	16.0	24+74.0 L-1 0+00							
	1+00	162.9	147.18	15.7								
	2+00	163.6	147.47	16.1								
		164.59	147.64 OUT 147.71 IN	17.0	2+56.3							
	3+00	164.5	147.88	16.6								
		164.52	148.08 OUT 148.16 IN	14.5	3+52.0							
	4+00	164.0	148.30	15.7								
	5+00	166.0	148.60	17.4								
	6+00	163.8	148.90	14.9								
	7+00	164.5	149.20	15.3								
		165.31	149.41 OUT 149.49 IN	15.9	7+70.3							
	8+00	165.3	149.58	15.7								
	9+00	<del>165.8</del>	149.90 OUT 150.51 IN	17.0	9+03.9							
	10+00	165.8	151.15	14.7								
	11+00	164.5	151.81	12.7								
		164.14	152.05 OUT 152.11 IN	12.1	11+36.6							
	12+00	163.5	152.32	11.2								
		163.27	152.48	10.8	12+47.6							
	13+00	162.6	152.76	9.8								
		162.77	152.95 OUT 153.02 IN	9.8	13+34.2							
	14+00	162.0	153.26	8.7								
		162.22	153.38 OUT 153.98 IN	8.8	14+32.1							
	15+00	162.1	153.73	8.4								
		162.71	153.93	8.8	15+53.0							
	16+00	162.3	154.12	8.2								
		162.99	154.41	8.6	16+69.7							
LINE 14	0+00	164.59	151.07	13.5	2+56.3 L-13 0+00							
	1+00	164.2	151.76	12.4								
	2+00	164.5	152.45	12.1								
	3+00	164.0	153.14	10.9								
		164.10	153.38	10.7	3+34.6							