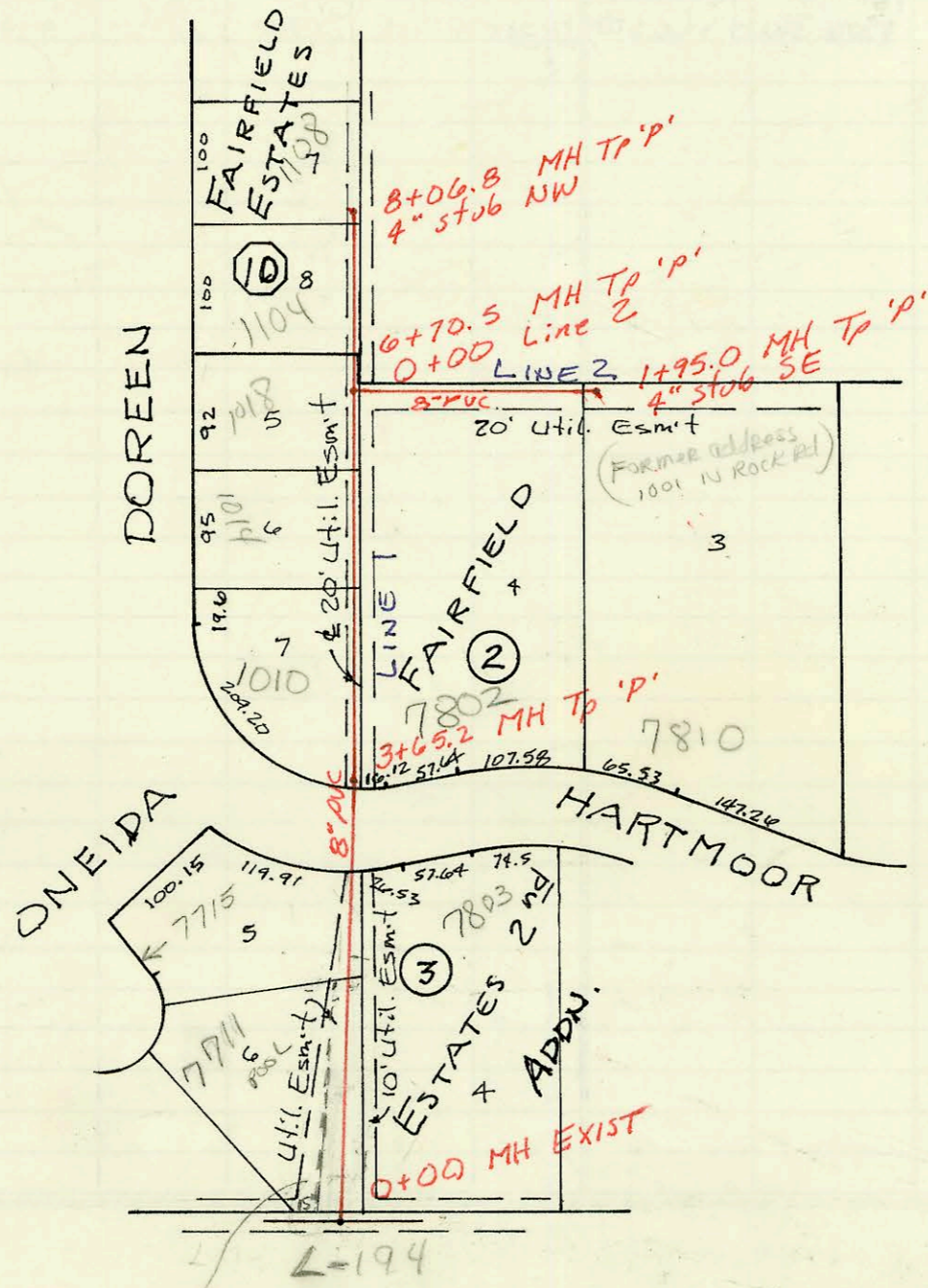


Priv. Sanitary Sewer for
Golden Hills 5th Addn. (Phase 1)
468-76-245-80001-000-000-155
Built By Utility Contr.
Booked 8-2-88 from As Built



LAT B7, WAR INDUSTRIES SEWER
468-76-245-81534-000-000-001
Built By Stannard Const.
Booked 8-3-88

Vac # V-1932
vac. portion of
util. ease

CONSTRUCTION RECORD						SERVICE RECORD							
STATION	ELEVATION		Depth	MANHOLE	4-INCH "Y" BRANCHES		No. of Permit		House Number		DATE OF PERMITS		
	Ground	Grade			North West	South East	North West	South East	North West	South East	North West	South East	
Priv. S.S. for Golden Hills St th Addn.													
LINE 1	0+00	160.85	141.95	18.9	EXIST 0+00	0+11 4" R ₁₅ N 0+25 4" R ₁₅ W	0+21 4" R ₁₅ S	21939	23221	11603 Kenny	11702 Hickory	11/15/88	5-24-89
	1+00	160.5	142.21	18.3		1+16 4" R ₁₅ N 2+15 4" R ₁₅ N	1+16 4" R ₁₅ S	21939	23551	11607 Kenny	11706 Hickory	11/15/88	7-18-89
	2+00	160.5	142.47	18.0		2+15 4" R ₁₅ N 2+21 4" R ₁₅ N	2+21 4" R ₁₅ S	21939	23552	11611 Kenny	11710 Hickory	11-15-88	7-18-89
	3+00	160.9	142.73	18.2		2+21 4" R ₁₅ N 2+23 4" R ₁₅ N	2+23 4" R ₁₅ S	21876	23553	11703 Kenny	11714 Hickory	11/08/88	7-18-89
	3+00	160.9	142.73	18.2		3+24 4" R ₁₅ N	3+24 4" R ₁₅ S	21876	23554	11711 Kenny	11718 Hickory	11/08/88	7-18-89
	4+00	161.58	143.03	18.6	3+95.0	4+24 4" R ₁₅ N	4+23 4" R ₁₅ S	21876	23531	11803 Kenny	11802 Hickory	11/08/88	7-18-89
	5+00	161.0	143.35	17.7		5+02 4" R ₁₅ N 5+09 4" R ₁₅ N	5+14 4" R ₁₅ S 5+21 4" R ₁₅ S	21758	23532	11807 Kenny	11806 Hickory	10/24/88	7-13-89
	6+00	160.6	143.66	16.9		6+23 4" R ₁₅ N	6+23 4" R ₁₅ S	21757	23533	11811 Kenny	11810 Hickory	10/24/88	7-13-89
	7+00	160.3	143.96	16.6		7+24 4" R ₁₅ N	7+24 4" R ₁₅ S	21756	23555	11815 Kenny	11814 Hickory	10/24/88	7-18-89
	8+00	159.5	144.26	15.2	0+00 L-2 7+88.4	8+24 4" R ₁₅ N	8+24 4" R ₁₅ S						
	9+00	159.8	144.58	15.2	0+00 L-3 8+83.6	9+24 4" R ₁₅ N	9+24 4" R ₁₅ S						
	10+00	159.5	144.85	14.7		10+24 4" R ₁₅ N	10+24 4" R ₁₅ S						
LINE 2	0+00	160.23	147.93	12.3	7+88.4 L-1 0+00	0+24 0.75" TAP	0+24 0.75" TAP	22339		1007 Pine Grove		1-5-89	
	1+00					0+53 0.75" TAP	0+53 0.75" TAP	22338		1011 Pine Grove		1-5-89	
LINE 3	0+00	159.73	150.64	9.1	1+11.1	4" stub NW	4" stub NW	22270		1015 Pine Grove		12-21-88	
LINE 3	0+00	159.30	144.50	14.8	8+83.6 L-7 0+00	4" stub NW	4" stub NW	22348		927 Pine Grove		3-11-92	
LINE 4	0+00	159.43	148.24	11.2	EXIST 0+00	8" stub E & S	8" stub E & S	23002		11607 Kenny		4-25-89	
	1+00	159.5	148.64	10.9		1+80 0.75" TAP	1+80 0.75" TAP	23001		11606 Kenny		4-25-89	
	2+00	159.8	149.03	10.8		2+14 0.75" TAP	2+14 0.75" TAP	22997		11610 Kenny		1-25-89	
	3+00	160.0	149.43	10.6		3+22 0.75" TAP	3+22 0.75" TAP	22310		11702 Kenny		1-5-89	
	4+00	160.4	149.83	10.6		3+70 0.75" TAP	3+70 0.75" TAP	22892		11706 Kenny		4-11-89	
	5+00	160.7	150.22	10.5		4+71 0.75" TAP	4+71 0.75" TAP	22893		11710 Kenny		4-11-89	
	6+00	160.6	150.75	9.9		5+01 0.75" TAP	5+01 0.75" TAP	22894		11802 Kenny		4-11-89	
	6+00	160.19	151.31	8.9	6+95.2	6+57 0.75" TAP	6+57 0.75" TAP	22932		11806 Kenny		4-17-89	
	6+00	160.19	151.31	8.9	6+95.2	6+57 0.75" TAP	6+57 0.75" TAP	22934		11814 Kenny		4-17-89	
LAT 87 LINE 1	0+00	180.63	170.46	10.2	EXIST 0+00	4" stub NW	4" stub NW	21877		11818 Kenny		11/08/88	
	1+00	180.5	170.86	9.6		1+00 0.75" TAP	1+00 0.75" TAP	21567		7711 5.5" PVC		4-17-89	
	2+00	181.5	171.26	10.2		2+28 0.75" TAP	2+21 0.75" TAP	23445		01614 CT		6-28-89	
	3+00	183.4	171.66	11.7		3+28 0.75" TAP	3+21 0.75" TAP	26034		00993 01615 CT		8-29-90	9-5-91
	4+00	183.8	172.06	11.7	3+65.2	4+14 0.75" TAP	4+14 0.75" TAP	26065		11715 01616 CT		8-29-90	12-4-90
	5+00	184.8	172.46	12.3		4+81 0.75" TAP	4+81 0.75" TAP	22534		1010 Doreen		2-3-89	
	6+00	185.0	172.86	12.1		5+92 0.75" TAP	5+92 0.75" TAP	24829		7852 Hartmoor		2-20-90	
	7+00	184.0	173.32	10.7	0+00 L-2 6+70.5	6+22 0.75" TAP	6+22 0.75" TAP	21906		1014 Doreen		11-10-88	
	8+00	185.1	173.92	11.2		7+53 0.75" TAP	7+53 0.75" TAP	24743		1018 Doreen		1-30-90	
LINE 2	0+00	184.8	176.34	8.5	0+00	4" stub NW	4" stub NW	21365		1104 Doreen		8/24/88	
	1+00	186.0	176.74	9.3		4" stub SE	4" stub SE	21357		1108 Doreen		10/21/91	
	1+00	186.4	177.12	9.3	1+95.0	4" stub SE	4" stub SE	2000 20358		11810 R. Hartmoor		Replaced 4" IN Middle of SWR	2-8-00

96-56437 7711 01614 CT - Pool House - 4" 50' 35" tied in to exist house line 35' behind house