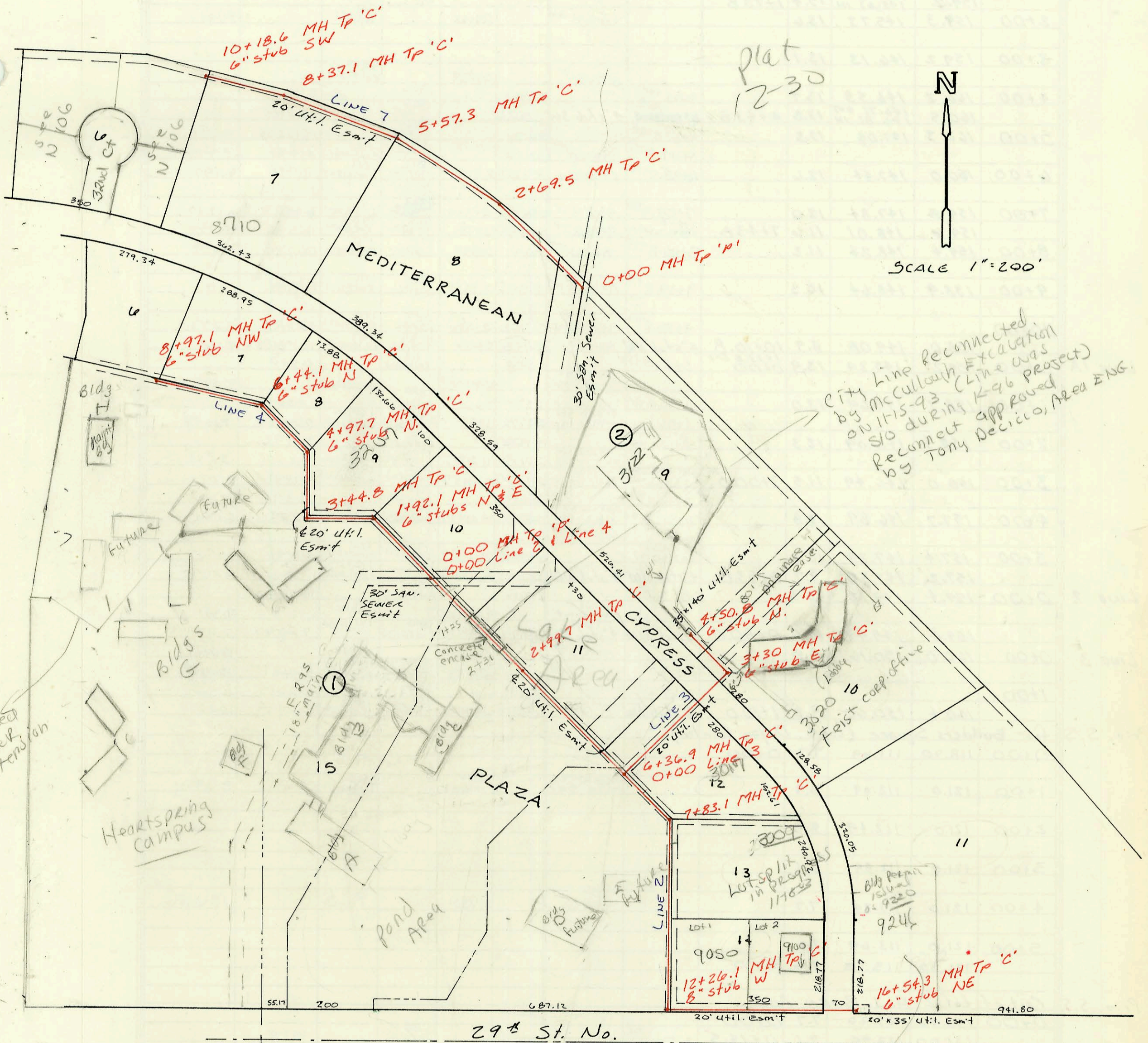


LAT 46, MAIN 22, WIS
468-76-245-81795-000-000-001
Built By Utility Contr.
Booked 9-22-88 from NCH-11

W



plat 1230



SCALE 1"=200'

City Line Reconnected by McCullough Excavation on 11-15-93. (Line was Reconnect approved by Tony Decicco, Area Eng.)

Proposed sewer Extension

Heartspring Campus

Pond Area

Storm sewer for roof drains Reference plans from Mike Lindabak on storm sewer per MIT

29th St. No.

L AT 46, MAIN 22, WIS (CONT)
 Line 3 (CONT)
 LINE 4

LINE 5

LINE 6

LINE 7

CONSTRUCTION RECORD						SERVICE RECORD						
STATION	ELEVATION		Depth	MANHOLE	4-INCH "Y" BRANCHES		No. of Permit		House Number		DATE OF PERMITS	
	Ground	Grade			North West	South East	North West	South East	North West	South East	North West	South East
						4" Sch 40 8+38' Tap		2001- 00410		8020 N CYPRESS		2/26/01
4+00	211.5	208.47	3.0									
	220.19	208.66	11.5	4+50.8	6" stub N						11-3-03	
0+00	219.15	206.59	12.6	0+00								
							21770		4817 W. PINE		10-25-88	
1+00	220.9	207.79	13.1									
	222.34	208.89 OUT 208.96 IN	13.5	1+92.1	6" stub N	6" stub E						
2+00												
3+00	223.4	209.84	13.6									
	224.42	210.21 OUT 210.29 IN	14.2	3+44.8								
4+00	224.7	210.72	14.0									
	225.59	211.48 OUT 211.50 IN	14.1	4+97.7	6" stub N							
5+00												
6+00	226.6	212.39	14.2									
	227.36	212.78 OUT 212.86 IN	14.6	6+44.1	6" stub N							
7+00	227.2	213.32	13.9									
								98-41097		8700 E 2476		3/6-98
8+00	227.0	214.13	12.9									
	226.13	214.92	11.2	8+97.1	6" stub NW							
0+01.4		206.00										
		206.18 OUT										
0+00	218.84	206.28 IN	12.7	0+00								
	219.68	207.66 OUT 207.69 IN	12.0	0+91.7								
1+00												
						4" PVC 40 1+61.7 tap		93-100487		3200 N Penetration		4-30-93
2+00	220.5	209.57	10.9									
3+00	222.2	211.30	10.9		3+11.5 TAP							
	222.98	211.86 OUT 212.08 IN	11.1	3+32.5			24632		8343 E 32nd		1-16-90	
4+00	224.0	212.43	11.6		4" SDR 35 4+20.3			74-113447		8415 E 32nd		7-19-94
5+00	225.8	212.94	12.9									
6+00	227.4	213.46	13.9									
	228.10	213.63 OUT 213.81 IN	14.5	6+32.9	6" stub N		23694		8441 E 32nd		23-6-94	
7+00	228.0	214.13	13.9									
					7+40 6" riser N 220.0		97-124387		8583 E 32nd		10-27-97	
8+00	228.0	214.60	13.4									
9+00	227.5	215.07	12.4									
	227.16	215.24	11.9	9+36.4	4" Sch 40 6" stub NE		79-01414		8555 E 32nd		12-8-99	
0+00	212.51	203.54	9.0	0+00	EXIST. 0+74.0 TAP		2577		8200 E 32nd		9-27-88	
1+00	213.4	204.56	8.8									
2+00	214.1	205.58	8.5									
		205.98 OUT										
	215.33	206.07 IN	9.4	2+39.1								
3+00	215.8	206.70	9.1									
	216.80	207.43 OUT 207.50 IN	9.4	3+70.3								
4+00	217.5	208.09	9.4									
5+00	219.3	210.06	9.2									
6+00	221.5	212.04	9.5									
	222.67	213.58 OUT 213.82 IN	9.1	6+78.0								
7+00	223.6	214.25	9.4									
					6" SDR 35 8+38.0 tap		92- 11701		8400 E 32nd		7-13-92	
8+00	225.5	216.18	9.3									
9+00	228.0	218.12	9.9									
10+00												
	229.87	220.21	9.7	10+08.0	6" stub NE		23550		8500 E 32nd		7-18-89	
0+00	222.17	209.12	13.1	0+00								
1+00	219.6	209.94	9.7									
2+00	221.7	210.76	10.9									
	224.28	211.33 OUT 211.46 IN	13.0	2+69.5								
3+00	224.1	211.70	12.4									