

CONSTRUCTION RECORD

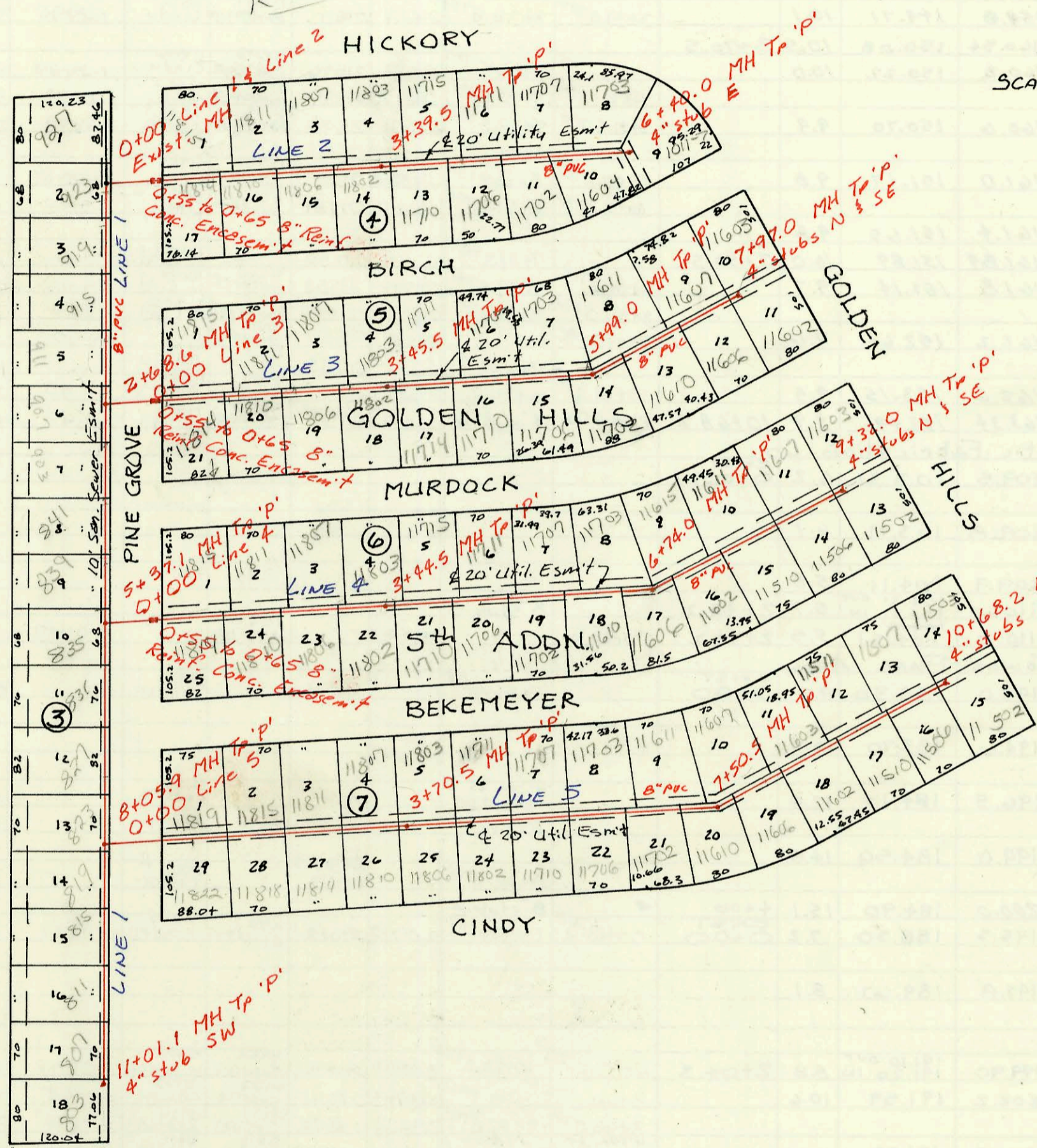
SERVICE RECORD



SCALE 1"=150'

K 266

119th St. W.



Priv. San. Sewer for Golden Hills 5<sup>th</sup> Addn (Phase II)  
 468-76-245-80001-000-000-165  
 Built By Utility Contr. Inc.  
 Booked 10-12-88 from As Built Plan

CONSTRUCTION RECORD

SERVICE RECORD

Priv. S Line 1

Line 2

Line 3

Line 4

STATION	ELEVATION		Depth	MANHOLE	4-INCH "Y" BRANCHES		No. of Permit		House Number		DATE OF PERMITS	
	Ground	Grade			North West	South East	North West	South East	North West	South East	North West	South East
0+00	160.37	145.32	15.1	EXIST. 0+00	5+10 4" Riser W		92-8918-7		423 see below		6-12-92	
1+00	159.4	145.60	14.3		4+18 4" Riser W		25097		419 Pine Grove		4-10-90	
2+00	159.6	145.87	13.7		4+18 4" Riser W		25099		415 Pine Grove		4-10-90	
3+00	159.1	146.16	12.9		4+18 4" Riser W		25016		411 Pine Grove		3-29-90	
4+00	158.8	146.46	12.3		4+18 4" Riser W		25015		407 Pine Grove		3-29-90	
5+00	158.5	146.77	11.7		4+18 4" Riser W		25014		403 Pine Grove		3-29-90	
6+00	158.6	147.14	11.5		4+18 4" Riser W		24898		391 Pine Grove		3-6-90	
7+00	158.5	147.55	11.0		4+18 4" Riser W		24897		389 Pine Grove		3-6-90	
8+00	158.98	147.98 OUT	11.0		4+18 4" Riser W		24834		385 Pine Grove		2-20-90	
9+00	158.9	148.50	10.4		4+18 4" Riser W		24833		381 Pine Grove		2-20-90	
10+00	158.8	149.01	9.8		4+18 4" Riser W		24813		377 Pine Grove		2-15-90	
11+00	158.7	149.52	9.2		4+18 4" Riser W		24812		373 Pine Grove		2-15-90	
0+00	160.37	145.48	14.9	EXIST. 0+00	0+78 4" Riser N	0+74 4" Riser S	22556	24084	11815 Hickory	11814 Birch	7-18-89	10-11-89
1+00	159.7	146.48	13.2		1+63.5 4" Riser N	1+44 4" Riser S	23600	24083	11811 Hickory	11810 Birch	7-25-89	10-11-89
2+00	160.2	147.47	12.7		2+30 4" Riser N	2+14 4" Riser S	24615	24082	11807 Hickory	11806 Birch	7-27-89	10-11-89
3+00	160.7	148.47	12.2		3+02 4" Riser N	2+84 4" Riser S	23616	24081	11803 Hickory	11802 Birch	7-27-89	10-11-89
4+00	161.2	152.13	9.1		4+23.5 TAP	3+64.5 TAP	22748	24051	11715 Hickory	11710 Birch	8-14-89	10-6-89
5+00	161.6	152.50	9.1		4+77.0 TAP	4+63.5 TAP	22900	24050	11701 Hickory	11700 Birch	9-18-89	10-6-89
6+00	162.0	152.87	9.1		5+24.0 TAP	5+08.0 TAP	22901	24049	11707 Hickory	11702 Birch	9-18-89	10-6-89
7+00	162.41	153.02	9.4		6+08.0 TAP	5+74.0 TAP	23901	23901	11652 Hickory	11651 Birch	10-6-89	10-6-89
0+00	159.31	146.22	13.1	EXIST. 0+00	0+79.5 4" Riser N	0+73 4" Riser S	22902	23903	11903 Hickory	11811 Golden Hill	9-18-89	9-18-89
1+00	159.5	146.65	12.9		1+62 4" Riser N	1+51 4" Riser S	22557	24060	11811 Birch	11810 Murdock	4-14-92	12-4-90
2+00	159.8	147.09	12.7		2+31 4" Riser N	2+19 4" Riser S	23862	24057	11807 Birch	11806 MURDOCK	12-5-91	11-20-90
3+00	160.1	147.52	12.6		2+99 4" Riser N	2+88 4" Riser S	22899	24055	11803 Birch	11802 MURDOCK	5-17-91	11-20-90
4+00	160.5	151.29	9.2		4" PVC 40 4+02.0 tap	4" PVC 40 4+15.5 tap	9136456	9138762	11711 Birch	11710 MURDOCK	10-30-91	12-9-91
5+00	160.9	151.69	9.2		4" SDR 35 4+6.5 TAP	4" SDR 35 4+55.0 tap	9230227	9211851	11707 Birch	11706 MURDOCK	10-14-92	7-7-92
6+00	161.53	152.08	9.5		4" SDR 35 5+93.0 tap	4" SDR 35 5+93.0 tap	9289177	9212303	11703 Birch	11702 MURDOCK	6-12-92	7-14-92
7+00	161.2	152.49	8.7		4" SDR 35 7+29.0 tap	4" SDR 35 7+38.0 tap	925287	925989	11611 Birch	11610 MURDOCK	4-10-90	4-24-92
0+00	158.86	146.96	11.9	EXIST. 0+00	4" stub N	4" stub SE	927937	929627	11607 Birch	11606 MURDOCK	4-16-92	12-21-92
1+00	159.0	147.42	11.6		4" SDR 35 1+21.0 tap	4" PVC 40 4+5.0 tap	9131127	1392	11815 MURDOCK	11814 Bekemeyer	8-28-91	10-30-91
2+00	159.5	147.87	11.4		4" SDR 35 1+72.0 tap	4" PVC 40 1+76.0 tap	9131177	914282	11811 MURDOCK	11810 Bekemeyer	8-28-91	10-1-91
3+00	159.9	148.33	11.6		4" SDR 35 2+81.5 tap	4" SDR 35 2+89.5 tap	9134284	11941	11807 MURDOCK	11806 Bekemeyer	10-1-91	1-30-92
4+00	160.2	150.58	9.6		4" SDR 35 3+74.0 tap	4" PVC 40 3+77.0 tap	9261437	9138767	11803 MURDOCK	11710 Bekemeyer	4-30-92	12-9-91
5+00	160.5	151.03	9.5		4" SDR 35 4+24.5 tap	4" SDR 35 5+27.4 tap	9138961	924483	11811 MURDOCK	11810 Bekemeyer	12-9-91	3-31-92
6+00	161.0	151.48	9.5		4" SDR 35 5+49.0 tap	4" SDR 35 5+49.0 tap	9127162	22305	11707 MURDOCK	11706 Bekemeyer	7-19-91	5-17-91
7+00	161.4	151.92	9.5		4" SDR 35 7+32.0 tap	4" SDR 35 7+17.0 tap	9136455	921706	11703 MURDOCK	11606 Bekemeyer	10-30-91	1-30-92
					4" SDR 35 8+16.0 tap	4" SDR 35 7+17.0 tap	9138307	27286	11611 MURDOCK	11602 Bekemeyer	3-25-91	3-18-91
											12-5-91	

CONT on K-275 Form #192-020 (July, 1981)

92-8918-7 6/12/92 923 N. Pine Grove - Brand P/ly - (4" SDR 35 TAP STA 0+33.0)