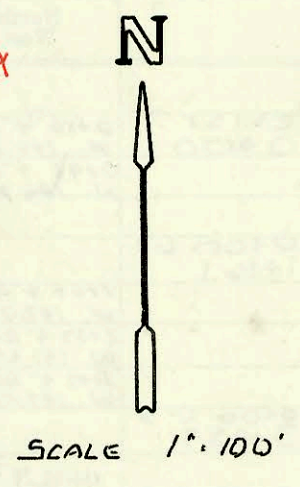
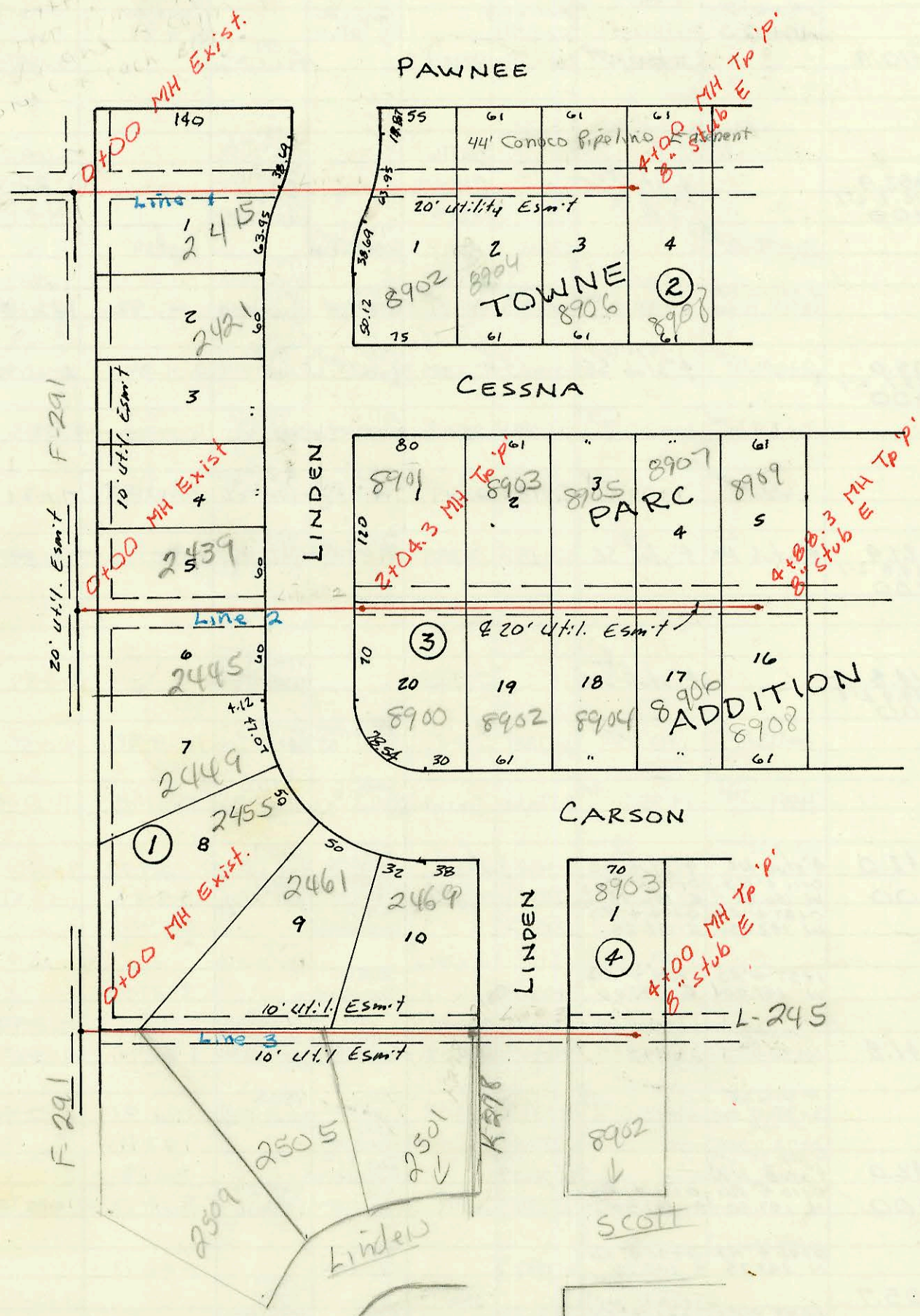


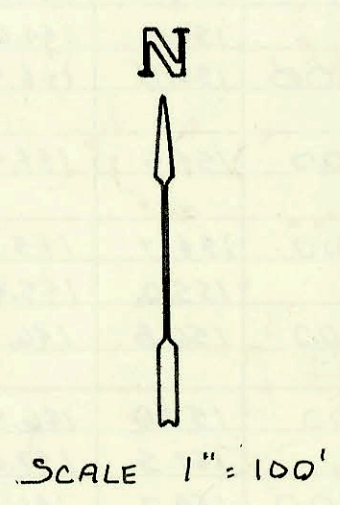
Priv. S.S. for Plastic Fabrication Co.
 468-76-245-80001-000-000-132
 Built By Clearwater Excau.
 Booked 10-21-88 from As Built Plan
 VWP



Refer to enclosed insert about temp. Conn to main. If any questions ask Gene Lath
 BR 2-27-90



Priv. S.S. for Towne Parc Addn.
 468-76-245-80001-000-000-145
 Built By L.A. Knebler
 Booked 10-21-88 from Plan
 VWP



CONSTRUCTION RECORD						SERVICE RECORD							
STATION	ELEVATION		Depth	MANHOLE	4-INCH "Y" BRANCHES		No. of Permit		House Number		DATE OF PERMITS		
	Ground	Grade			North West	South East	North West	South East	North West	South East	North West	South East	
Priv. S.S. Line 4 CONT.	for Golden Hills 5 th Addn. (Phase II) (CONT.)												
8+00	161.8	152.33	9.5			4" 50A 35 8+23.0 tap		2127651-7		11510 Bokemeyer		7-19-91	
9+00	162.2	152.75	9.5			4" 50A 35 8+87.0 tap	4" 50A 35 9+03.0 tap	19462	19464	11601 Muedak	11506 Bokemeyer	4-2-91	4-2-91
Line 5		162.8	9.9	9+32.0 8+05.9 L-1 0+00		4" 50A 35 4" stub W	4" 50A 35 4" stub SE	91-38627-7	92-23815-7	11603 Muedak	115020 Bokemeyer	12-5-91	8-25-92
1+00	159.0	148.68	10.3			1+09.0 TAP	1+04.0 TAP	24677	21508	11819 Bokemeyer	11820 Cindy	1-24-90	9-19-88
2+00	159.5	149.20	10.3			1+91.0 TAP	1+94.0 TAP	24676	21509	11815 Bokemeyer	11818 Cindy	1-24-90	9-19-88
3+00	159.8	149.71	10.1			2+53.5 TAP	2+42.5 TAP	24675	21510	11811 Bokemeyer	11814 Cindy	1-24-90	9-19-88
4+00	160.2	150.22	10.0	3+70.5		3+39.0 TAP	3+36.5 TAP	24674	21511	11809 Bokemeyer	11810 Cindy	1-24-90	9-19-88
5+00	160.6	150.70	9.9			4+88.5 TAP	4+72.5 TAP	24673	21516	11803 Bokemeyer	11806 Cindy	1-24-90	9-29-88
6+00	161.0	151.17	9.8			5+21.5 TAP	5+32.5 TAP	24672	21517	11811 Bokemeyer	11812 Cindy	1-24-90	9-29-88
7+00	161.4	151.65	9.8			6+02.5 TAP	6+15.8 TAP	24320	21519	11703 Bokemeyer	11706 Cindy	11-20-89	9-29-88
8+00	161.89	151.89	10.0	7+50.5		6+70.0 TAP	6+61.5 TAP	24600	21751	11611 Bokemeyer	11612 Cindy	1-9-90	10-24-88
9+00	161.8	152.14	9.7			8+03.5 TAP	7+24.5 TAP	24599	21752	11607 Bokemeyer	11610 Cindy	1-9-90	10/24/88
10+00	162.2	152.64	9.6			8+59.5 TAP	8+22.2 TAP	24598	21754	11603 Bokemeyer	11602 Cindy	1-9-90	10/24/88
11+00	162.6	153.15	9.5			9+47.2 TAP	9+60.2 TAP	24587	21755	11511 Bokemeyer	11512 Cindy	1-9-90	10-24-88
12+00	163.34	153.49	9.9	10+68.2		10+01.2 TAP	10+34.2 TAP	24588	21512	11507 Bokemeyer	11509 Cindy	1-9-90	9-19-88
Priv. S.S.	for Plastic Fabrication Co.												
0+00	109.5	103.31	6.2	EXIST 0+00		4" stub W	4" stub SE	24587	21513	11503 Bokemeyer	11502 Cindy	1-9-90	9-19-88
1+00	109.8	103.71	6.1										
2+00	109.9	104.11	5.8										
3+00	110.0	104.31	5.7	2+49.2		8" stub S							
4+00	110.0	104.51	5.5	2+74.2		6" stub W		19192		16.50 Knight		10-01-87	
Priv. S.S. Line 1	S. for Towne Parc Addn.												
0+00	193.0	183.30	9.7	EXIST 0+00		0+55.0 TAP		21543		2415 Linden		9-19-88	
1+00	194.6	183.70	10.9										
2+00	196.5	184.10	12.4			4" 50A 35 2+66.0 tap		20200		8702 Cassna		3-5-91	
3+00	199.0	184.50	14.5			2+97.0 tap		26505		8704 Cassna		11-13-90	
4+00	200.0	184.90	15.1	4+00 EXIST		3+88.0 TAP		20215 21943		8906 R Cassna		3-13-82 11-14-88	
Line 2	0+00	195.5	188.30	7.2	0+00	0+48.0 TAP	0+49.0 TAP	20762	21012	2439 Linden	2445 Linden	3-31-88	7-5-88
1+00	197.8	189.67	8.1										
2+00	199.90	191.10 out 191.20 in	8.8	2+04.3		2+40.3 TAP	2+55.3 TAP	20741	21541	8901 Cassna	8900 Cassna	5-27-88	9-21-88
3+00	202.2	191.59	10.6			3+20.3 TAP	2+99.3 TAP	20763	21541	8903 Cassna	8902 Cassna	5-31-88	9-19-88
4+00	204.3	191.99	12.3			3+65.0 TAP	3+83.3 TAP	21972	21542	8905 Cassna	8904 Cassna	11-16-88	9-19-88
5+00	205.00	192.34	12.7	4+88.3		4+27.8 tap	4+41.3 tap	91-38833-7	91-32547-7	8907 Cassna	8906 Cassna	12-2-91	9-16-91
Line 3	0+00	201.6	192.50	9.1	0+00	4+75.3 tap	4+77.8 tap	71-34567-7	91-29531-7	8709 Cassna	8708 Cassna	10-7-91	8-7-91
1+00	202.0	192.90	9.1			0+30.0 TAP	0+32.0 TAP	21013	20329	2455 Linden	2504 Linden	7-5-88	12-27-88
2+00	203.4	193.30	10.1			1+60.0 TAP	1+11.0 TAP	22705		2505 Linden		3-13-89	
3+00	205.6	193.70	11.9			2+83.0 TAP	2+40.0 TAP	21014	21941	2461 Linden	230 Linden	7-5-88	11/14/88
4+00	207.30	194.10	13.2	4+00		3+75.0 TAP	3+73.0 TAP	20740	22806	8909 Linden	8907 Scott	5-27-88	2-27-88