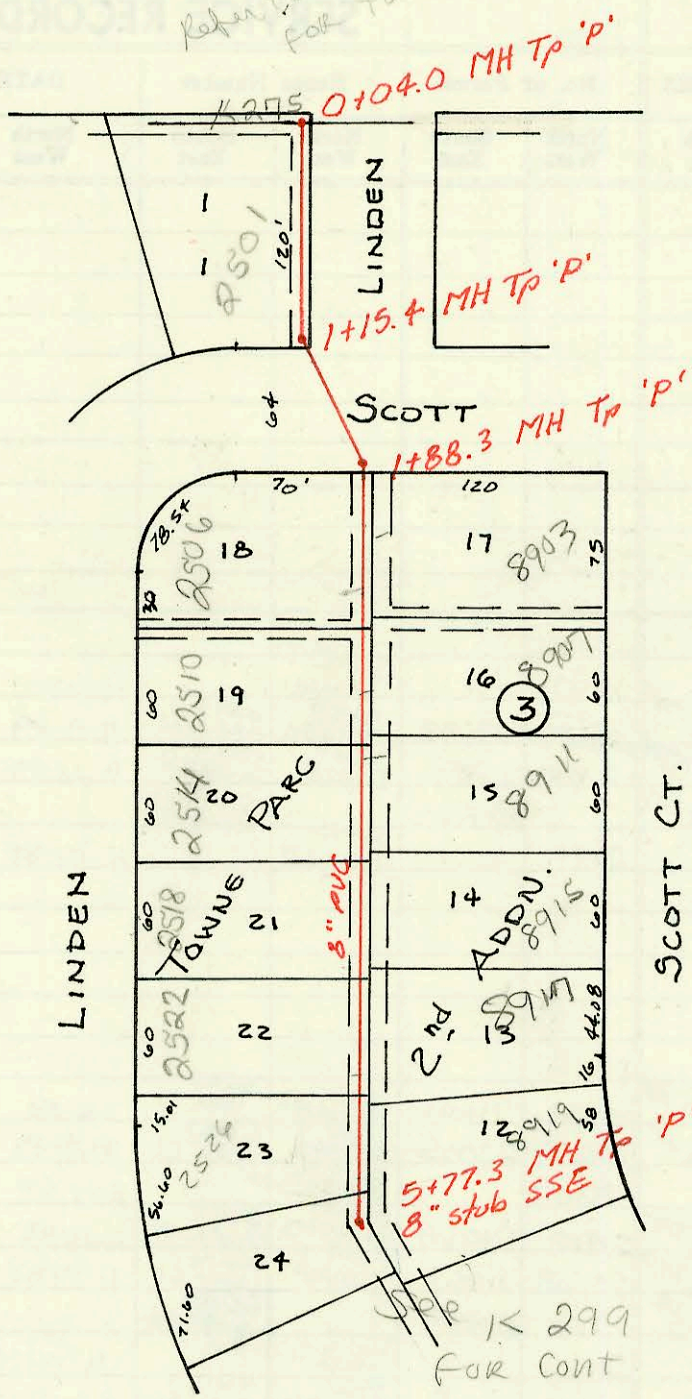
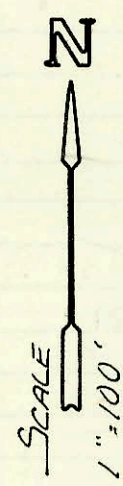
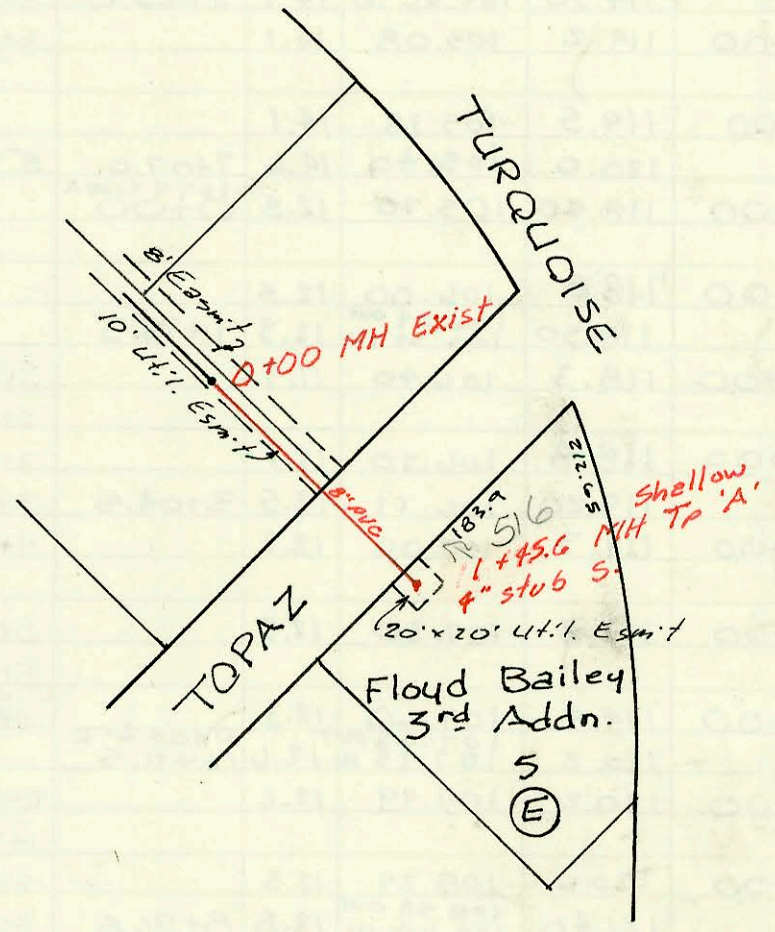


Refer to Map 145
FOR Towne Parc 1st Addn

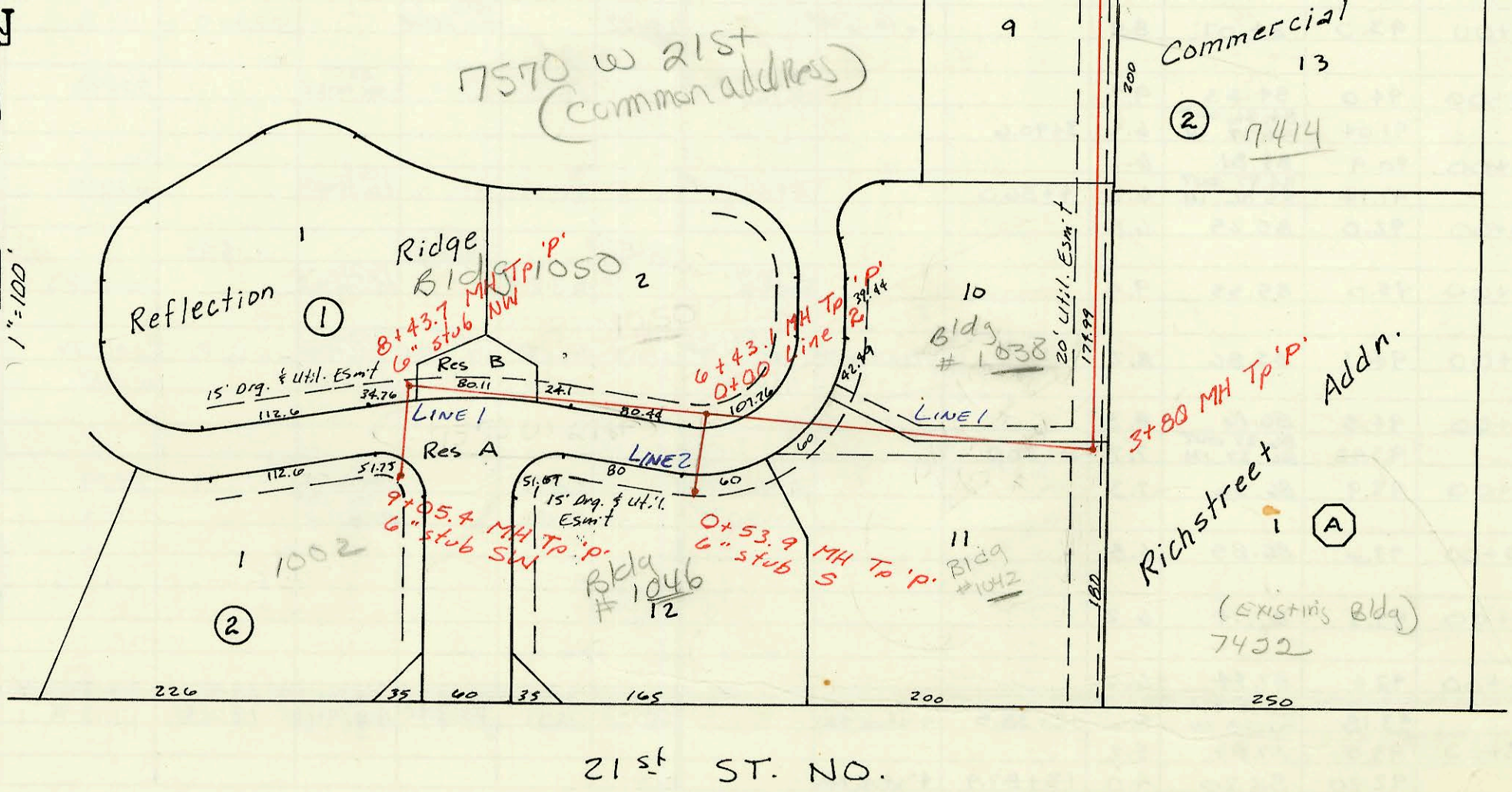
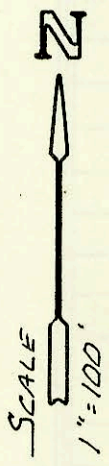
Priv. S.S. for Towne Parc 2nd Addn (Phase I)
468-76-245-80001-000-000-177
Built By Nowak Const.
Booked 10-25-88 from As-Built Plan



LAT 42, MAIN 4, SWI
468-76-245-81722-000-000-001
Built By Utility Cont.
Booked 10-26-88 from Plan & Insp. Cards



LAT 6, MAIN 15, SWI
468-76-245-81841-000-000-001
Built By Stannard Const. Co. Inc.
Booked 10-27-88 from Plan



21st ST. NO.

CONSTRUCTION RECORD						SERVICE RECORD						
STATION	ELEVATION		Depth	MANHOLE	4-INCH "Y" BRANCHES		No. of Permit		House Number		DATE OF PERMITS	
	Ground	Grade			North West	South East	North West	South East	North West	South East	North West	South East
Priv. S. S. for Towne Parc 2 nd Addn (Phase I)												
0+04	204.65	195.01	9.6	0+04.0								
1+00	206.4	196.08	10.3									
	206.79	196.25	10.5	1+15.4								
	206.74	196.70	10.0	1+88.3								
2+00	206.8	196.75	10.1		2+30.3 TAP	2+19.3 TAP	22706	25113	2506 Linden	2903 Scott ct	3-13-89	4-11-90
						3+01.3 TAP		25114		2904 Scott ct		4-1-90
3+00	208.9	196.20	12.7		3+17.3 TAP	3+37.3 TAP	22708	25115	2510 Linden	2911 Scott ct	3-13-89	4-11-90
					3+80.3 TAP		22709		2514 Linden		3-13-89	
4+00	210.2	197.64	12.6		4+16.3 TAP	4+27.3 TAP	22710	25453	2518 Linden	2915 Scott ct	3-13-89	6-4-90
					4+99.3 TAP	5+11.2 TAP	22711	24718	2522 Linden	2917 Scott ct	3-13-89	1-25-90
5+00	211.2	198.09	13.1		14" 5.08 NPL TAP		22707	23559	2526 Linden	2919 Scott ct	9-26-90	7-19-89
	212.38	198.43	14.0	5+77.3		8" stub SSE						
LAT 42 MAIN 4, SW I												
0+00	139.3	134.07	5.2	0+00								
1+00	139.0	134.47	4.5									
	139.8	134.65	5.2	1+45.6		4" stub S.		21054		516 TOPAZ		7-11-88
LAT 6, MAIN 15, SW I												
0+00	142.5	130.97	11.5	0+00								
1+00	141.8	131.37	10.4									
						1+23.0 TAP		23210		7414 W 21st N		5-23-89
2+00	142.4	131.77	10.6		4" PVC 40 3+44.0 W		22235167		7510 # W 21st 1038		3-12-92	
						2+34.0		22764		7422 W 21st N		3-21-89
3+00	143.0	132.17	10.8									
	143.8	132.49 out 132.69 IN	11.3	3+80								
4+00	143.5	132.77	10.7			4" sch 40 4+06.0		9468117		7570 #109 W 21st # 1042		5-2-94
5+00	144.1	133.17	10.9									
6+00	143.8	133.57	10.2									
	144.6	133.74	10.9	0+00 f2 6+43.1								
7+00	144.9	134.20	10.7		4" sch 40 7+09.1		7613147		7570 #1050 W 21st		2-6-96	
8+00	145.6	135.00	10.6									
	146.5	135.35 out 135.55 IN	11.2	8+43.7	4" sch 40 6" stub NW		7612467		7570 #1050 W 21st		1-29-96	
9+00												
	147.2	136.04	11.2	9+05.4		6" stub SW						
0+00	144.6	133.94	10.7	0+00								
	144.7	134.37	10.3	0+53.9		6" stub S		25631		7570 #1046 W 21st		6-27-90