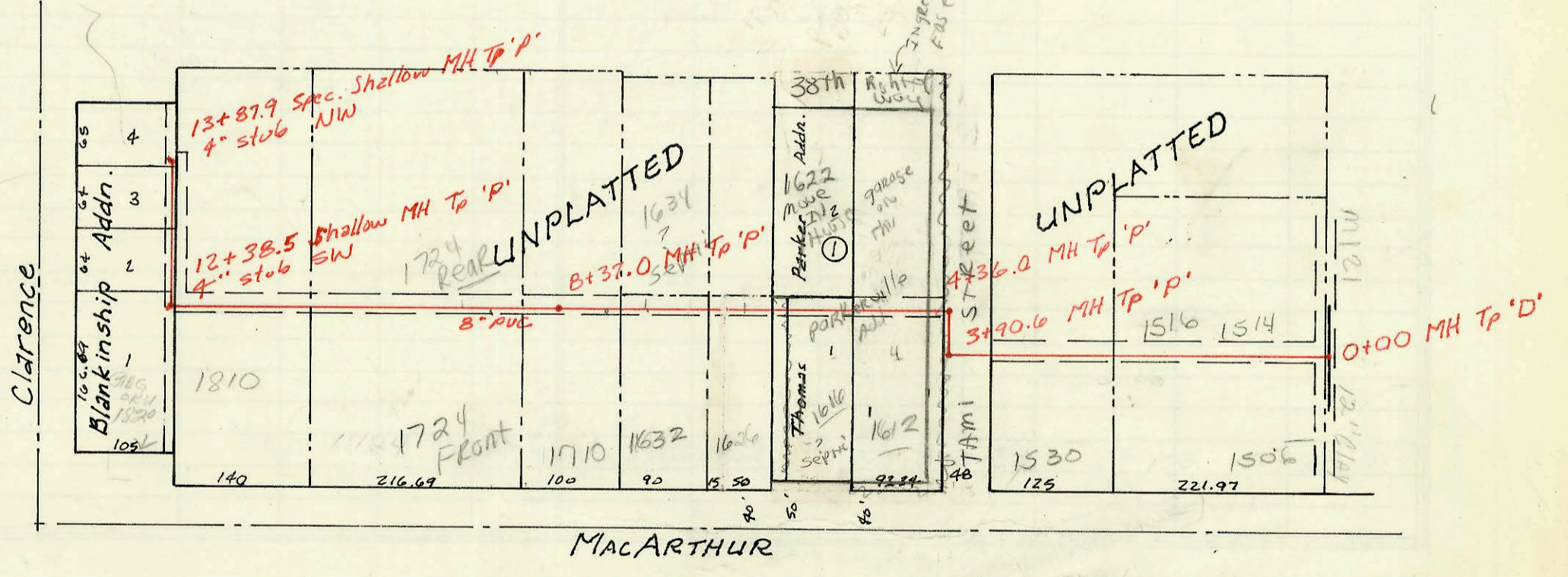
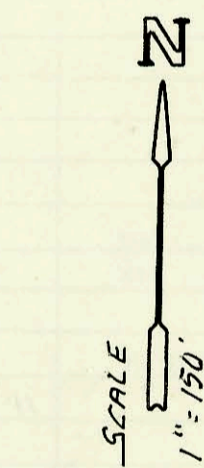


LAT 264, SWI
 468-76-245-81826-000-000-001
 Built By Utility Contr. Inc.
 Booked 11-14-88 from Plan & Insp. Cds.

LAT 1, MAIN 3, SWI
 468-76-245-81800-000-000-001
 LAT 43, MAIN 3, SWI
 468-76-245-81803-000-000-001
 Built By Stannard Const. Co. Inc.
 Booked 11-10-88 from DA-6



CONSTRUCTION RECORD

SERVICE RECORD

| STATION | ELEVATION | | Depth | MANHOLE | 4-INCH "Y" BRANCHES | | No. of Permit | | House Number | | DATE OF PERMITS | | |
|---------------|---------------------|--------|---|---------|---------------------|------------------------------------|------------------------|------------------------------------|--------------|--------------------|---------------------------|--------------------|----------------------|
| | Ground | Grade | | | North West | South East | North West | South East | North West | South East | North West | South East | |
| LAT 264, SW I | | | | | | | | | | | | | |
| LINE A | 0+00 | 117.85 | 102.80 | 15.1 | 0+00 | | | | | | | | |
| | 1+00 | 118.1 | 103.20 | 14.9 | | | | | | | | | |
| | 2+00 | 118.50 | 103.60 | 14.9 | 1+99.0 | | | | | | | | |
| | 3+00 | 118.1 | 103.93 | 14.2 | | | | | | | | | |
| | 4+00 | 117.8 | 104.26 | 13.5 | | | | | | | | | |
| | | 119.20 | 104.33 ^{OUT} 104.43 ^{IN} | 14.9 | 4+20.5 | | | | | | | | |
| | 5+00 | 118.8 | 104.68 | 14.1 | | | | | | | | | |
| | | 119.50 | 104.76 ^{OUT} 104.86 ^{IN} | 14.7 | 5+26.0 | 5+74.0 ^{TAP} | 5+74.0 ^{TAP} | 22875 | 23673 | 324 Dugan | 3815 ARAPHO | 4-7-89 | 8-3-89 |
| | 6+00 | 119.2 | 105.08 | 14.1 | | 6+20.0 ^{TAP} | 6+03.0 ^{TAP} | 22321 | 22608 | 3310 Dugan | 3810 ARAPHO | 7-28-89 | 2-20-89 |
| | | | | | | | 6+64.0 ^{TAP} | | 22565 | 3750 Dugan | 3741 ARAPHO | | 2-14-89 |
| | 7+00 | 119.5 | 105.38 | 14.1 | | | | 21911 | | | | 11-14-88 | |
| | | 120.0 | 105.40 | 14.6 | 7+07.0 | 8" stub N | | | | | | | |
| LINE B | 0+00 | 118.50 | 105.70 | 12.8 | 0+00 | | | | | | | | |
| | 1+00 | 118.8 | 106.00 | 12.8 | | | | | | | | | |
| | | 118.50 | 106.24 ^{OUT} 106.34 ^{IN} | 12.3 | 1+79.5 | | | | | | | | |
| | 2+00 | 118.3 | 106.40 | 11.9 | | 2+06.5 ^{TAP} | 1+90.0 ^{TAP} | 22626 | 24091 | 3850 ARAPHO | 6222 YORK CT | 2-9-89 | 10-12-89 |
| | | | | | | 2+58.5 ^{TAP} | 2+21.5 ^{TAP} | 24276 | 23055 | 3840 ARAPHO | 6220 YORK CT | 11-29-89 | 4-25-89 |
| | 3+00 | 118.8 | 106.70 | 12.1 | | 3+11.0 ^{TAP} | | 25309 | | 3830 ARAPHO | | 5-14-90 | |
| | | 119.20 | 106.71 | 12.5 | 3+04.5 | 3+70.5 ^{TAP} | 3+45.5 ^{TAP} | 21910 | 21969 | 3820 ARAPHO | 6218 YORK CT | 11-14-88 | 11-14-88 |
| | 4+00 | 119.3 | 107.00 | 12.3 | | 4+29.5 ^{TAP} | 4+08.5 ^{TAP} | 21963 | 21968 | 3814 ARAPHO | 6216 YORK CT | 11-14-88 | 11-14-88 |
| | | | | | | | 4+95.5 ^{TAP} | | 23028 | | 6214 YORK CT | | 4-26-89 |
| | 5+00 | 119.8 | 107.30 | 12.5 | | 5+29.5 ^{TAP} | | 21962 | | 3810 ARAPHO | | 11-14-88 | |
| | | | | | | 5+49.5 ^{TAP} | | 22439 | 23018 | 3750 ARAPHO | 6214 YORK CT | 1-9-89 | 4-26-89 |
| | 6+00 | 119.9 | 107.60 | 12.3 | | 6+50.5 ^{TAP} | | 24500 | | 3750 ARAPHO | 6214 YORK CT | | |
| | | 120.2 | 107.73 ^{OUT} 107.73 ^{IN} | 12.6 | 0+00 L-C 6+11.5 | | 6+89.5 ^{TAP} | | 21925 | | 6212 YORK CT | | 11-14-88 |
| | 7+00 | 120.2 | 107.99 | 12.2 | | 6+82.5 ^{TAP} | | 24579 | | 6221 YORK CT | | 1-9-90 | |
| | | | | | | 4" SDR 35 7+19.5 ^{TAP} | | 20227 | | 6211 YORK CT | | 5-6-91 | |
| | 8+00 | 120.6 | 108.29 | 12.3 | | 8+03.5 ^{TAP} | | 25472 | | 6201 YORK CT | | 6-6-90 | |
| | | 121.40 | 108.58 ^{OUT} 108.68 ^{IN} | 12.8 | 8+96.5 | 8+72.5 ^{TAP} | | 25902 | | 6141 YORK CT | | 8-2-90 | |
| | 9+00 | 121.0 | 108.69 | 12.3 | | | 9+28.5 ^{TAP} | | 21964 | | 6210 YORK CT | | 11-14-88 |
| | | | | | | | | | 22971 | | 6113 YORK CT | | 4-21-89 |
| | 10+00 | 121.0 | 108.99 | 12.0 | | 10+29.5 ^{TAP} | 10+34.5 ^{TAP} | 23969 | 24921 | 6203 YORK CT | 6114 YORK CT | 9-25-89 | 3-20-90 |
| | 11+00 | 120.5 | 109.29 | 11.2 | | 11+35.5 ^{TAP} | 11+30.5 ^{TAP} | 21908 | 22822 | 6206 YORK CT | 6114 YORK CT | 11-14-88 | 9-30-89 |
| | | | | | | 11+46.5 ^{TAP} | 11+56.7 ^{TAP} | 21909 | 22972 | 6204 YORK CT | 6113 YORK CT | 11-14-88 | 4-21-89 |
| | 12+00 | 120.0 | 109.59 | 10.4 | | 12+54.9 ^{TAP} | 12+77.5 ^{TAP} | 21966 | 22823 | 6202 YORK CT | 6120 YORK CT | 11-14-88 | 3-21-89 |
| | | 119.90 | 109.83 | 10.1 | 12+79.5 | 4" stub SW | 4" stub SE | 21965 | 23620 | 6200 YORK CT | 6122 YORK CT | 11-14-88 | 7-28-89 |
| LINE C | 0+00 | 120.20 | 107.73 | 12.5 | 0+00 | 6" stub L-B | | 24580 | | 6231 YORK CT | | 1-9-90 | 2-24-1991 TAP MUD |
| | | 120.0 | 107.87 | 12.1 | 0+46.5 | 4" stub NW | 4" stub S | 24453 | | 6241 YORK CT | | 12-12-89 | |
| LAT 1 & L | AT 43, MAIN 3, SW I | | | | | | | | | | | | |
| | 0+00 | 90.34 | 83.55 | 6.8 | 0+00 | | | | | | | | |
| | 1+00 | 92.8 | 83.81 | 9.0 | | | 0+82.0 ^{TAP} | | 25424 | | 1506 Mac Arthur | | 5-29-90 |
| | | | | | | | 1+27.0 ^{TAP} | | 25423 | | 1514 Mac Arthur | | 5-29-90 |
| | 2+00 | 93.0 | 84.07 | 8.9 | | | 2+19.6 ^{TAP} | | 25422 | | 1516 Mac Arthur | | 5-29-90 |
| | 3+00 | 94.0 | 84.33 | 9.7 | | | 3+20.6 ^{TAP} | | 25418 | | 1530 Mac Arthur | | 5-29-90 |
| | | 91.04 | 84.56 ^{OUT} 84.77 ^{IN} | 6.5 | 3+90.6 | | | | | | | | |
| | 4+00 | 90.9 | 84.81 | 6.1 | | | 4+87.0 ^{TAP} | | 24144 | | 1612 Mac Arthur | | 10-20-89 |
| | | 91.14 | 84.97 ^{OUT} 85.06 ^{IN} | 6.2 | 4+36.0 | | | | | | | | |
| | 5+00 | 92.0 | 85.25 | 6.8 | | | | 99653 | | 1622 Mac Arthur | | 4-8-99 | |
| | 6+00 | 95.0 | 85.55 | 9.5 | | | 4" SCH 40 6+49.0 | | 72-31837 | | 1626 Mac Arthur | | 12-21-93 |
| | 7+00 | 94.1 | 85.86 | 8.2 | | | 7+49.0 ^{TAP} | 4" PVC 40 7+05.0 ^{TAP} | 21915 | 94-16897 | 1634 Mac Arthur | 1632 Mac Arthur | 11-15-88 |
| | | | | | | | 7+89.0 ^{TAP} | | 21916 | | 1610 Mac Arthur | | 11-15-88 |
| | 8+00 | 94.5 | 86.16 | 8.3 | | | | | | | | | |
| | | 93.92 | 86.27 ^{OUT} 86.37 ^{IN} | 7.7 | 8+31.0 | | | | | | | | |
| | 9+00 | 93.9 | 86.56 | 7.3 | | | 9+06.0 ^{TAP} | | 23488 | | 1724 (FEED) Mac Arthur | | 7-7-89 |
| | | | | | | | 9+35.0 ^{TAP} | | 23487 | | 1724 Mac Arthur | | 7-7-89 |
| | 10+00 | 93.6 | 86.85 | 6.8 | | | | | | | | | |
| | 11+00 | 93.3 | 87.14 | 6.2 | | | | | | | | | |
| | 12+00 | 93.4 | 87.44 | 6.0 | | | | | | | | | |
| | | 93.18 | 87.55 ^{OUT} 87.58 ^{IN} | 5.6 | 12+38.5 | 4" stub SW | | 22158 | 28111 | 1620 Mac Arthur | 1610 Mac Arthur | 12-05-89 | 11-30-89 |
| | 13+00 | 93.0 | 87.84 | 5.2 | | | | | | | | | |
| | | 92.20 | 88.20 | 4.0 | 13+87.9 | 4" stub NW | | | | | | | |

125 107
SYSTEMS
10-11
Mill