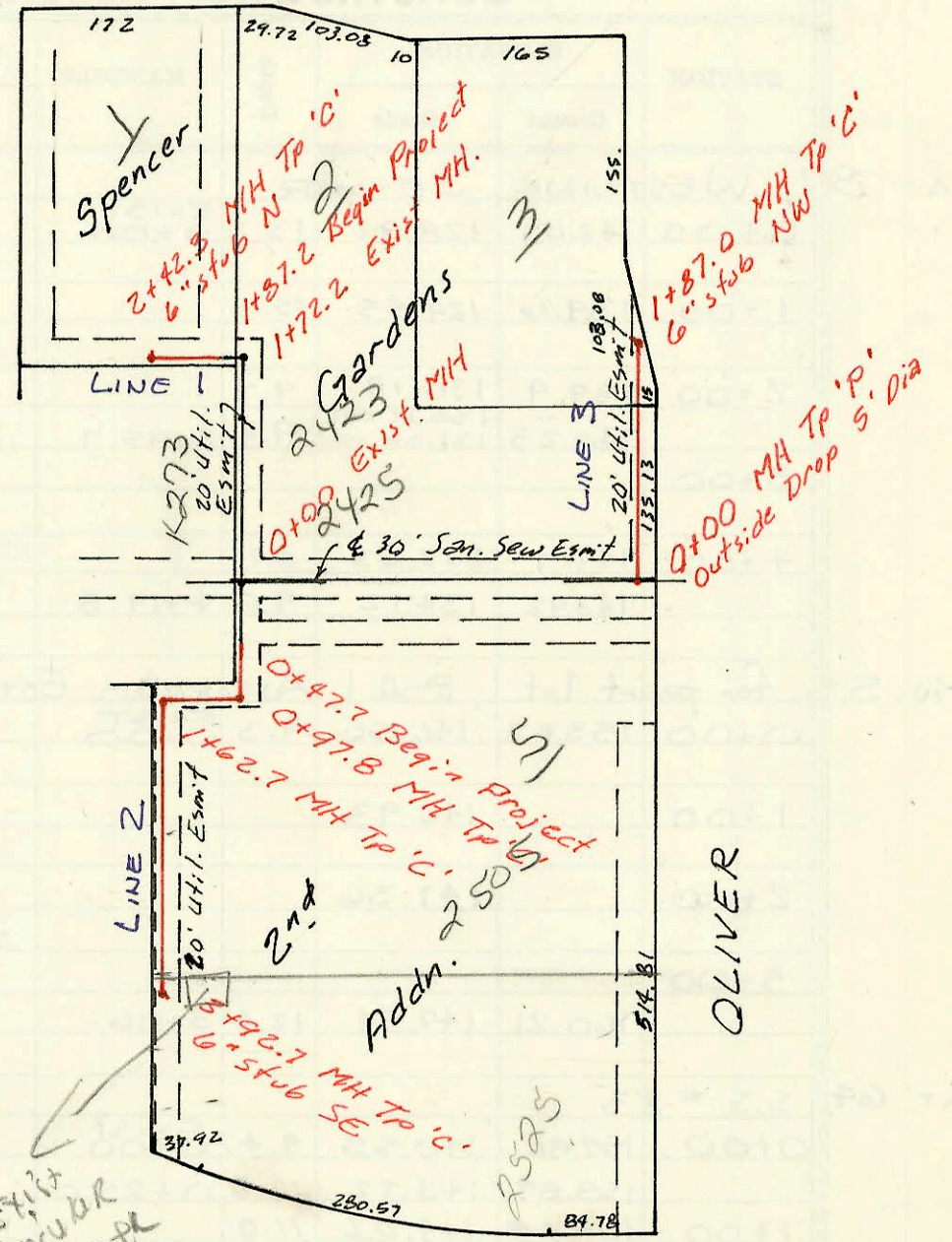
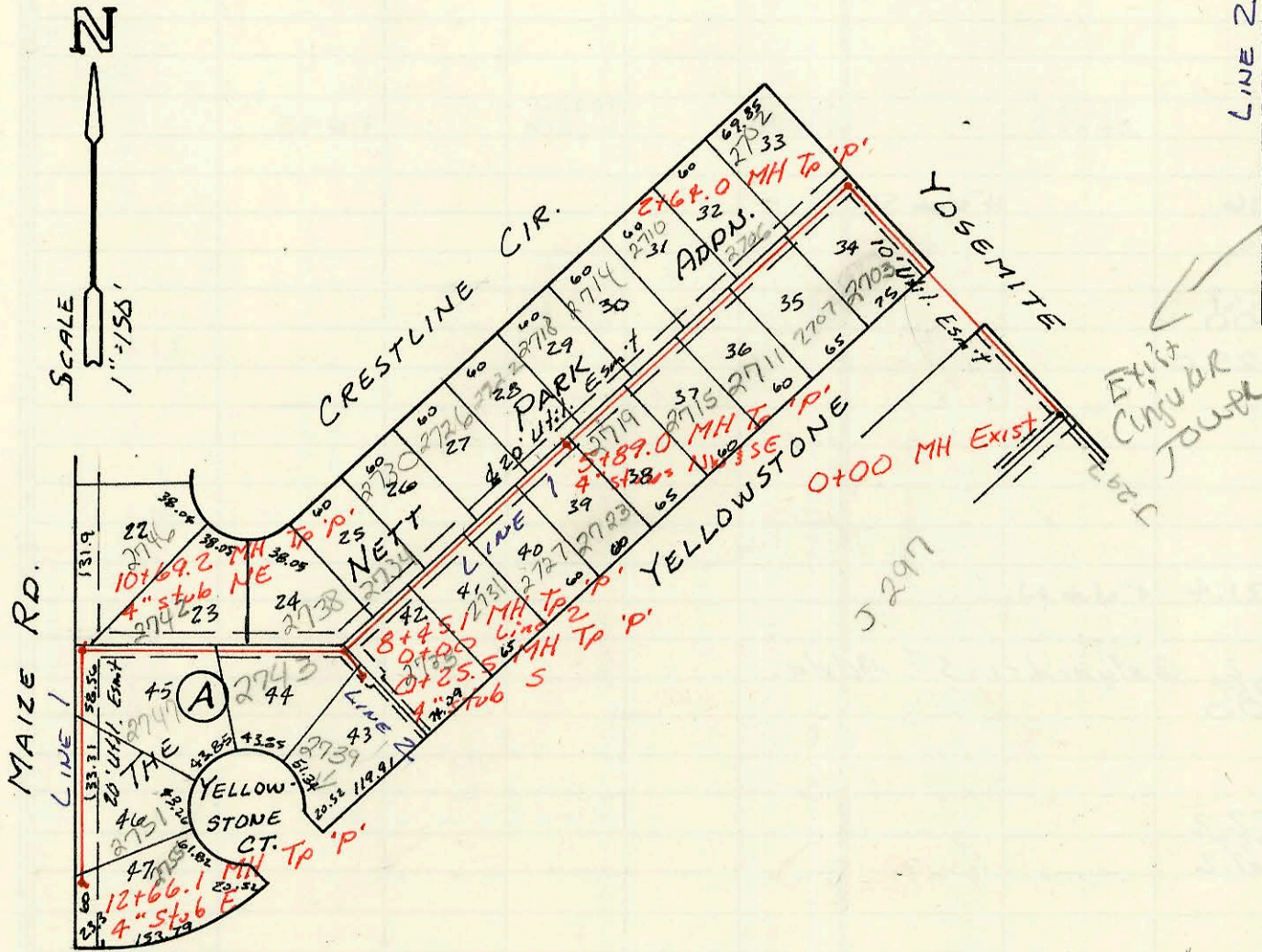


PAWNEE

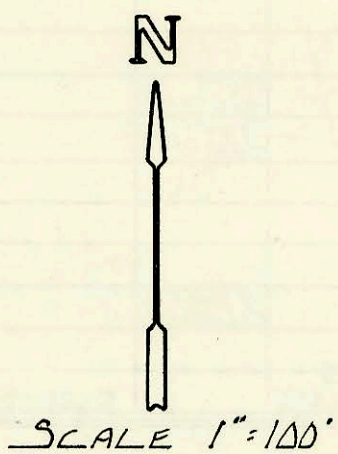
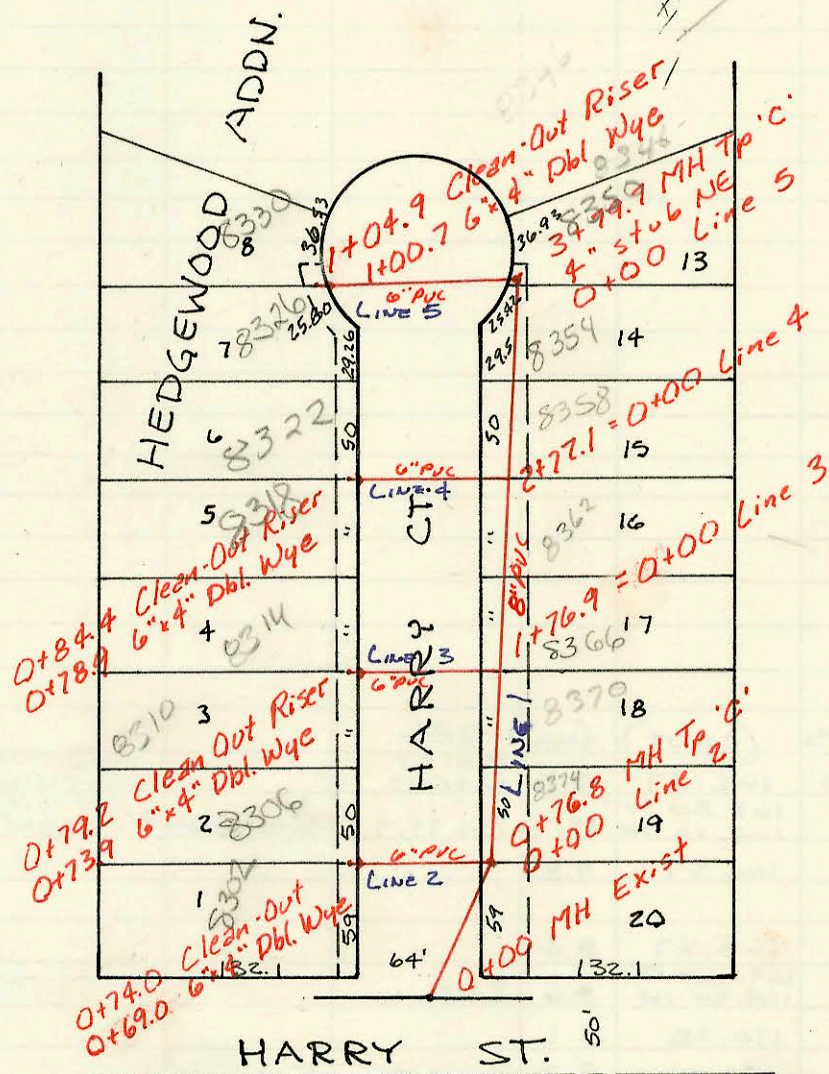
LAT 97, WAR INDUSTRIES SEWER
468-76-245-81852-000-000-001 (601542)
Built By Mid-States Constr.
Booked 12-14-88 from Plan



LAT 233, SW INTERCEPTOR
468-76-245-81644-000-000-001
Built By NOWAK CONST.
Booked 12-15-88 from Plan



LAT 13, MAIN 19, WIS
468-76-245-81869-000-000-001
Built By Mid-States Const.
Booked 12-20-88 from Plan



SFE
I-242 For The North Lots

CONSTRUCTION RECORD							SERVICE RECORD						
STATION	ELEVATION		Depth	MANHOLE	4-INCH "Y" BRANCHES		No. of Permit		House Number		DATE OF PERMITS		
	Ground	Grade			North West	South East	North West	South East	North West	South East	North West	South East	
LAT 97 LINE 1	WIS												
	1+87.2	117.3	109.59	7.7									
	2+00	117.2	109.70	7.5									
		117.5	110.06	7.4	2+42.3	6" stub N							
LINE 2	0+47.7	115.9	105.39	10.5									
		115.8	105.59 out 105.69 in	10.2	0+97.8								
	1+00												
		115.5	105.95 out 106.05 in	9.4	1+62.7								
	2+00	115.3	106.20	9.1									
							2+66.7	24788	2505	5.011 w/c		2-9-90	
	3+00	114.5	106.60	7.9									
		114.0	106.97	7.0	3+92.7	6" stub SE		22883	2525	5.011 w/c		12/23/88	
LINE 3	0+00	119.7	110.42	9.3	0+00								
	1+00	120.1	111.02	9.1									
		120.4	111.54	8.9	1+87.0	6" stub NW							
LAT 233 LINE 1	SWI												
	0+00	140.1	131.11	9.0	0+00								
	1+00	140.1	131.51	8.6									
	2+00	140.6	131.91	8.7									
		141.3	132.17 out 132.27 in	9.1	2+64.0								
	3+00	142.2	132.41	9.8									
							4" SDR 35 2+79.6 top 4" sch 40 PVC 3+63.0 tap 4" P.C. 40 4" SDR 35 4+04.0 top 4" SDR 35 4+66.0 tap 5+4.1 4" riser NW 4" riser SE	3+02.0 top 4" SDR 35 TAP 35 w/c 92586 94-1789-7 92-1899-7 92-2896-7 92-5979-7 92-1448-7 92-2247-7 92-1447-7 92-1447-7 93-1631-7 93-898-7 93-2769-7 93-3067-7	23064 97-33188-7 24228 25155 24555 23496 26649 21851-7 25686 22681 25044	2702 2705 2706 2705 2714 2718 2723 2726 2734 2735 2738 2742 2742 2746	2705 2706 2711 2715 2714 2718 2723 2727 2731 2735 2738 2742 2746	1-31-92 4-22-90 1-28-94 7-13-93 9-11-92 4-23-92 8-19-92 6-18-93 2-4-93 12-7-93	5-2-89 9-17-91 11-02-89 4-17-90 1-3-90 7-6-89 5-10-91 6-27-90 3-9-89 4-21-93 4-3-90
	4+00	144.0	132.81	11.2									
	5+00	145.9	133.21	12.7									
		146.2	133.57	12.6	5+89.0	4" stub NW 4" stub SE							
	6+00												
							6+63.5 6+82.1 tap						
	7+00	145.8	134.01	11.8									
							4" sch 40 PVC 7+08.1 top 4" P.C. 40 7+97.1 tap						
	8+00	145.6	134.41	11.2									
		145.6	134.59 out 134.69 in	11.0	0+00 L-2 8+45.1		8+02.1 tap	25686				6-27-90	
	9+00	146.0	134.91	11.1									
							4" SDR 35 9+13.1 tap 9+69.6 3/0 4" SDR 35 9+92.1 tap 4" sch 40 PVC 4" SDR 35	9+14.1 TAP 10+35.2 TAP 4" stub NE	93-1631-7 93-898-7 93-2769-7 93-3067-7	2738 2742 2742 2746	2742 2746	6-18-93 4-21-93 2-4-93 12-7-93	
	10+00	146.8	135.31	11.5									
		146.3	135.59 out 135.69 in	10.7	10+69.2								
	11+00	146.2	135.81	10.4									
	12+00	146.2	136.21	10.0									
		146.2	136.48	9.7	12+66.1		11+98.1 TAP 4" stub E	22655 25359				2-1-89 5-18-90	
LINE 2	0+00	145.6	134.69	10.9	0+00								
		145.3	134.79	10.5	0+25.5			23827				8-31-89	
LAT 13 LINE 1	MAIN 19, WIS.												
	0+00	159.0	149.64	9.4	EXIST 0+00								
		159.3	149.95 out 150.05 in	9.4	0+00 L-2 0+76.8		4" sch 40 PVC 0+86.8	94-12361-7				8-3-94	
	1+00	160.0	150.14	9.9									
							4" sch 40 1+37.8 4" SDR 35 1+90.8 tap	94-12360-7 92-7868-7				8-3-94 5-27-92	
	0+00 L-3 1+76.9	161.0	150.45	10.6									
	2+00	161.5	150.54	11.0									
							2+30.2 TAP	26585				11-21-90	
	0+00 L-4 2+77.1	162.5	150.85	11.7			4" SDR 35 6" P.C. leader 4" sch 40 PVC 2+87.7	92-5032-7 94-12359-7	8322 8358	8374 Happy Ct		4-11-92 8-3-94	
	3+00	162.5	150.94	11.6									
							4" sch 40 3+45.7	95-2892-7 97-15684-7	8354 8350	Happy Ct Happy Ct		3-24-95 9-2-92	
LINE 2	0+00	159.3	150.12	9.2	0+00 L-5 0+76.8 L-1 0+00								
	0+69.0		150.33	8.6			4" NW OK 4" SW OK	25206 22450	8306 = Happy Ct	8302 Happy Ct		4-28-90 1-20-89	
	0+74.0	159.4											
LINE 3	0+00	161.0	151.26	9.7									
	0+73.9		152.03	8.2			4" NW 4" SW	93-3047-7 93-3047-7	8314 Happy Ct	8310 Happy Ct		11-12-93 12-7-93	
	0+79.2	160.30											
LINE 4	0+00	162.5	151.66	10.8									
	0+78.9		152.47	8.5			4" NW 4" SW	97-15687		8308 Happy Ct		9-2-92	
	0+84.4	160.95											
LINE 5	0+00	161.85	151.43	10.4	3+79.7 L-1 0+00								
	1+00.7		152.48	9.5			4" NW 4" SW	95-1452-7 95-1452-7	8330 Happy Ct	8326 Happy Ct		9-12-95 9-12-95	
	1+04.9	161.95											