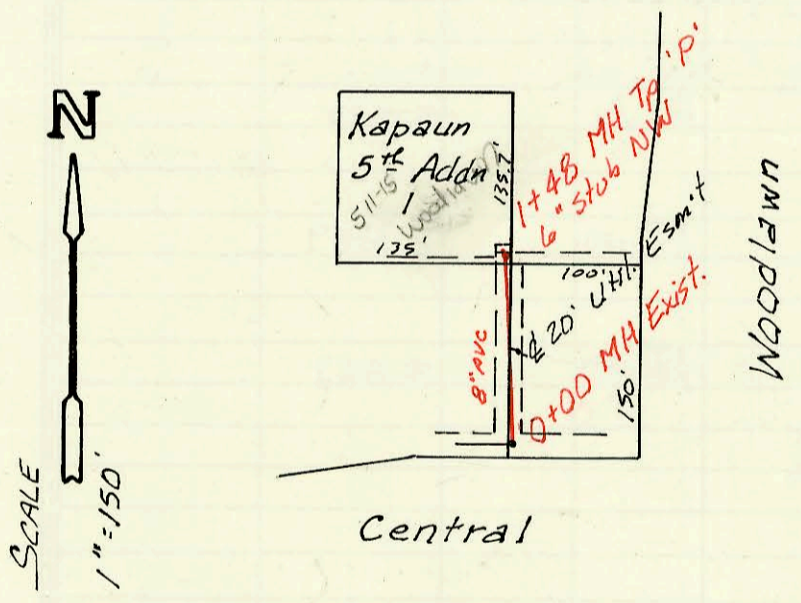
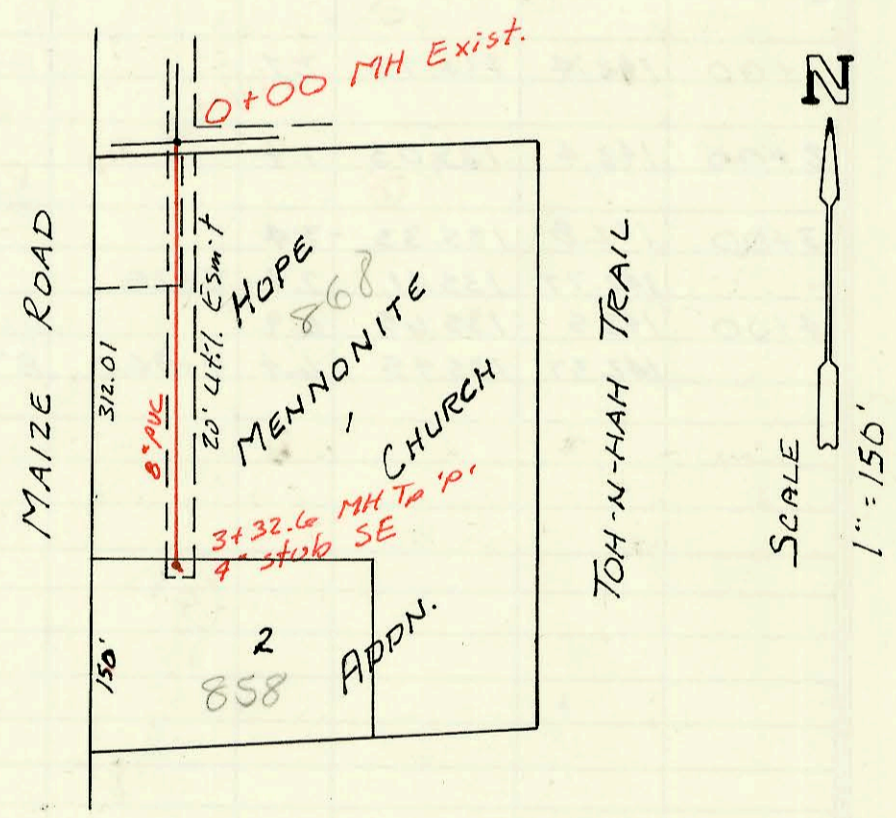


LAT 271, S.W.I.
 468-76-245-81854-000-000-001
 Built By Utility Contr.
 Booked 1-26-89 from Plan

Priv. San. Sewer - HOPE MENNONITE CHURCH
 468-76-245-80001-000-000-188
 Built By Duling Const.
 Booked 2-22-89 from As Built Plan.



Priv. San. Sewer for Lot 1, Kapaun 5th Addn.
 468-76-245-80001-000-000-179
 Built By L.A. Knebler
 Booked 2-22-89 from As-Built Plan



Priv. San. Sewer to serve
 Presbytery Church of Wichita
 468-76-245-80001-000-000-183
 Built By Stannard Const.
 Booked 2-28-89 from As-Built

