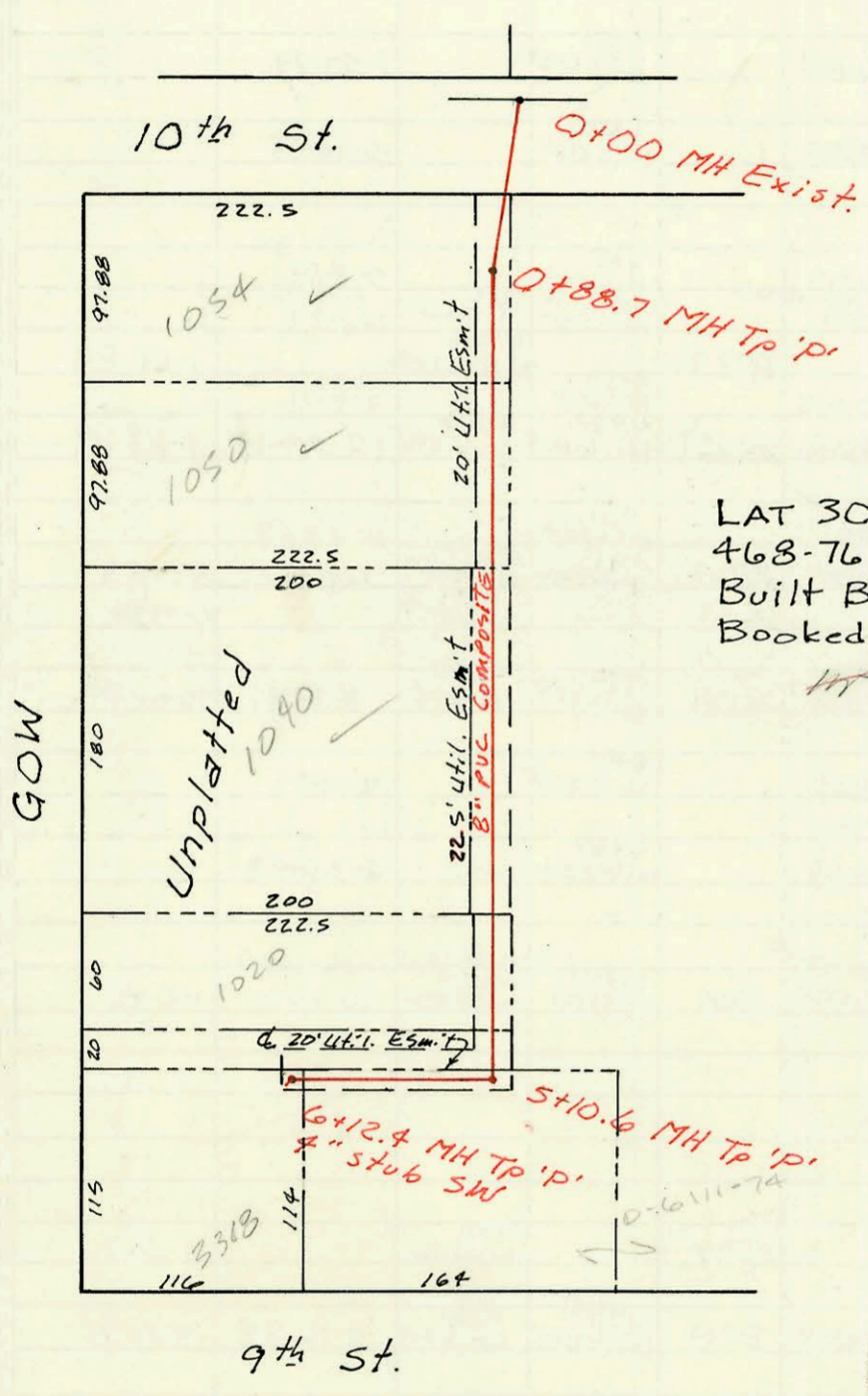
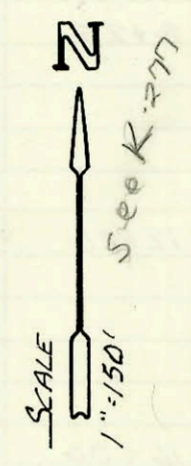
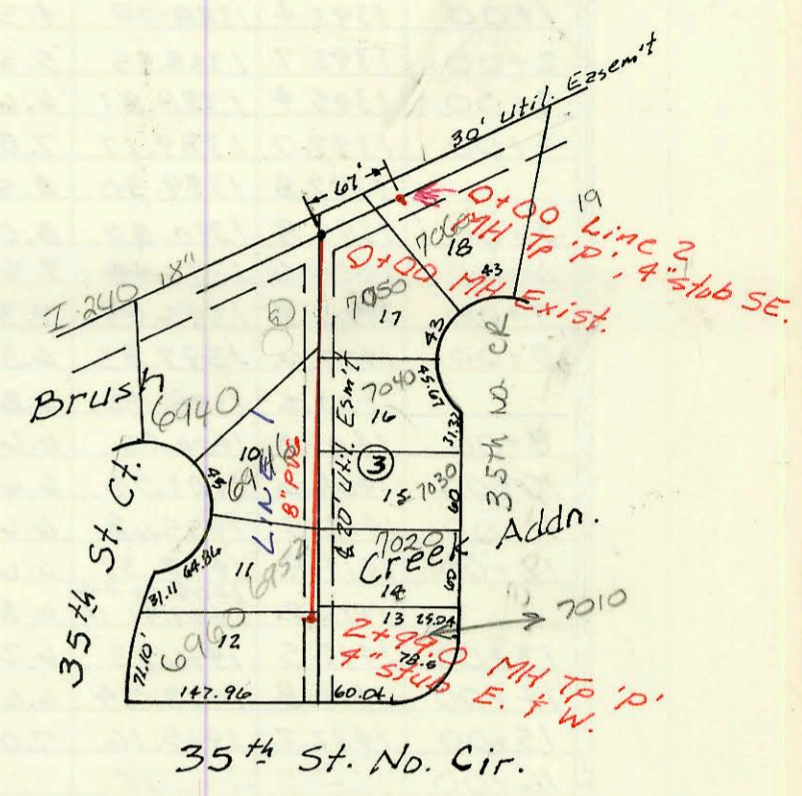


Priv. San. Sewer. for Lots 4 & 5, Blk. 1
 Keeler Industrial Tracts
 468-76-245-80001-000-000-113
 Built By Hardison Ditching
 Booked 2-21-89 From As Built

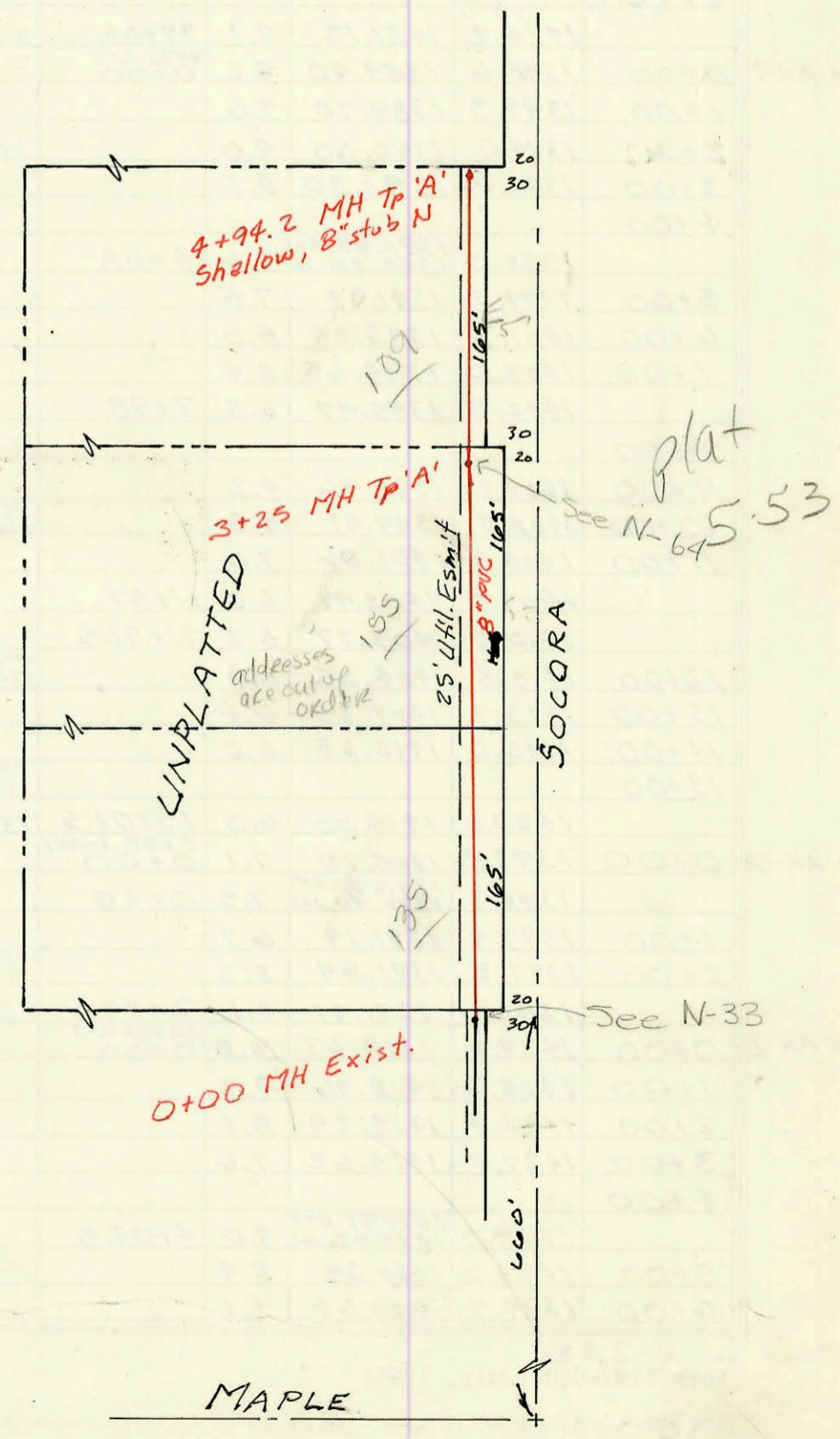


LAT 30, MAIN 9, San. Sewer #22
 468-76-245-81843-000-000-001
 Built By Mid-States Const.
 Booked 2-23-89 from TCD-7



Priv. San. Sewer for Lots 10-18, Blk 3.
 Brush Creek Address.
 468-76-245-80001-000-000-201
 Built By Stannard Const.
 Booked 2-27-89 from As Built.

LAT 44, MAIN 4, SWI
 468-76-245-81821-000-000-001
 Built By Stannard Const.
 Booked 2-28-89 from CF-1



plat
 See N-645.53

See N-33

CONSTRUCTION RECORD						SERVICE RECORD						
STATION	ELEVATION		Depth	MANHOLE	4-INCH "Y" BRANCHES		No. of Permit		House Number		DATE OF PERMITS	
	Ground	Grade			North West	South East	North West	South East	North West	South East	North West	South East
Priv. San. Sewer for Lots 4 & 5, Blk 1 Keeler Industrial Tracts												
0+00	86.5	82.54	4.0	0+00								
1+00	88.5	82.93	5.6									
2+00	91.5	83.32	8.2									
	92.8	83.36 OUT 85.76 IN	9.4	2+10		8" stub S						
3+00	95.0	89.79	5.2									
	96.0	91.28	4.7	3+31	8" stub N	6" stub NE						
LAT 30. MAIN 9, S.S. # 22												
0+00	122.85	111.10	11.8	0+00								
	122.27	111.60	10.7	0+88.7								
1+00	122.0	111.64	10.4		1+08.7 TAP 2+10.7 TAP		24347		1059 N Gow 1050 N Gow		11-22-89	
2+00	121.8	112.03	9.8				22753				3-20-89	
3+00	121.6	112.42	9.2						1090 N Gow		10-6-89	
4+00	121.6	112.81	8.8		3+50.7 TAP		24054					
5+00	122.3	113.20	9.1									
	122.58	113.24 OUT 113.38 IN	9.3	5+10.2								
6+00												
	123.19	113.74	9.5	6+12.4	4" stub SW	4" stub						
Priv. San. Sewer for Lots 10-18, Blk 3 Brush Creek												
LINE 1	0+00	176.38	164.75	11.6	EXIST 0+00	0+16.0 TAP 0+19.0 TAP	22549	25445	6940 35th St Ct	7050 35th Cr	2-15-89	5-31-90
	1+00	177.0	165.32	11.7		4" SDR 1+42.0 TAP 1+65.0 TAP		20270		7040 35th N Cr		4-11-91
	2+00	178.0	165.88	12.1		2+51.0 TAP 2+55.0 TAP	23649	26982	6948 35th St Ct	7020 35th N Cr	7-31-89	2-4-91
		179.47	166.44	13.0	2+99.0	4" stub W	22976	24100	7020 35th St Ct	7020 35th N Cr	4-24-89	10-13-89
LINE 2	0+00	176.70	162.34	14.4	0+00	4" SDR 2+102.88 7" stub SE	22616	254	6940 35th Ct	7010 35th N Cr	2-22-89	15-9-91
							23650			7060 35th St Ct		2-11-89
LAT 44, MAIN 4, SWI												
	0+00	142.13	134.43	9.7	0+00							
	1+00	142.4	134.73	7.7		1+38.0 TAP	22728		135 Socora		3-15-89	
	2+00	142.4	135.03	7.4		2+18.0 TAP	22736		155 Socora		3-16-89	
	3+00	142.8	135.33	7.4								
		142.77	135.41	7.4	3+25							
	4+00	142.5	135.65	6.9		4+54.7 TAP	22725		109 Socora		3-15-89	
		142.37	135.95	6.4	4+94.2	8" stub N						
Priv. San. Sewer for Arthur Heights												
Line AH-2 cont from K-289												
	7+00	1429.9	1420.94	9.0								
		1428.4	1421.08	7.3	7+46							
	8+00	1430.2	1421.30	8.9			22164		4940 Hilcrest		12-06-88	
	9+00	1429.5	1421.71	7.8		4" SDR 10+04.0	22416		4958 Hilcrest		2-23-86	
	10+00	1428.6	1422.11	6.5		4" SDR 10+04.0	22015		4965 R woodlawn	4966 Hilcrest	4-16-81	4-19-87
		1426.0	1422.45	3.6	10+83	3" stub N	22719	22947			3-13-89	