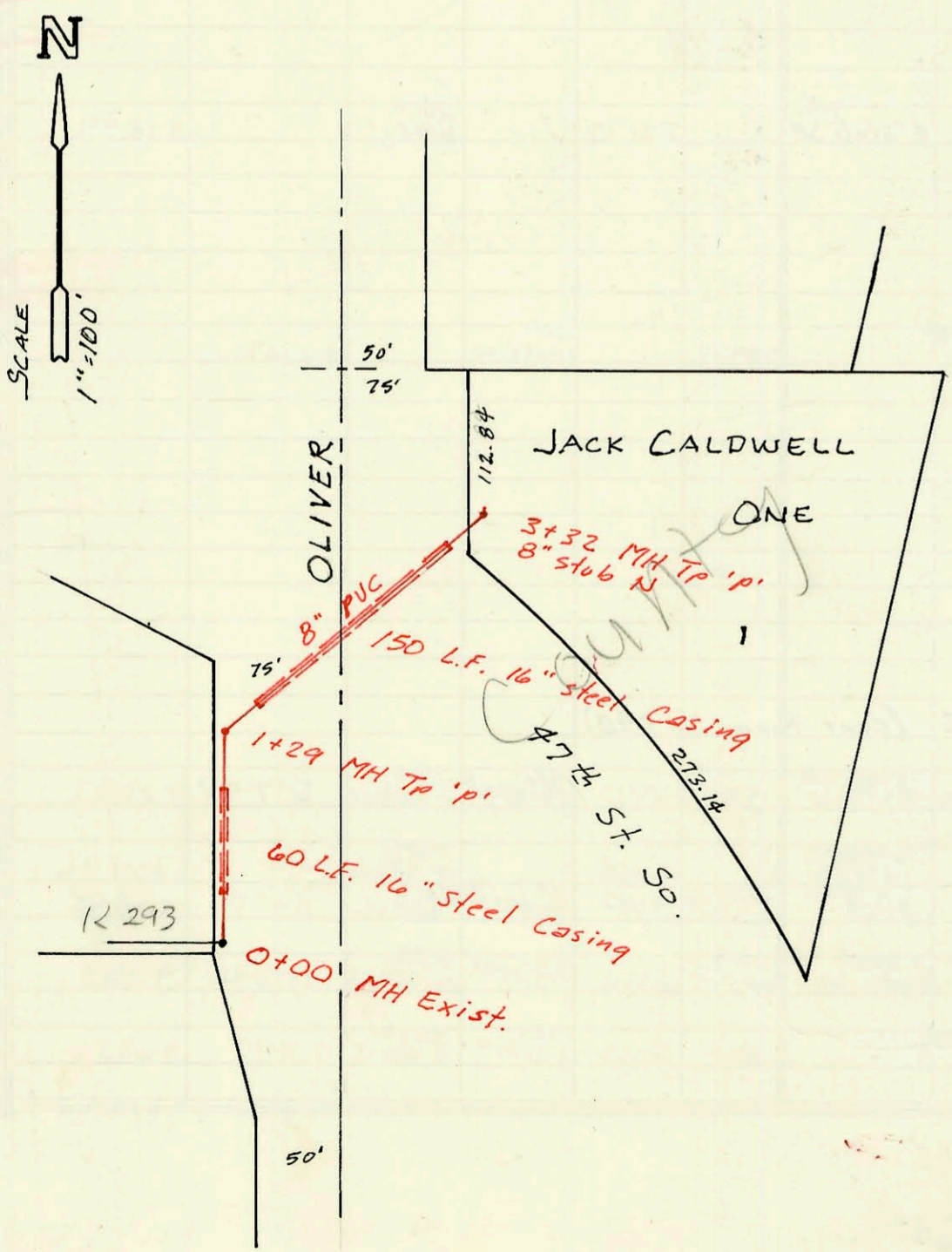


Priv. San. Sewer for Northfork Addn.
 46B-76-245-80000-000-000-008 (101)
 Booked 4-89 from Plan.

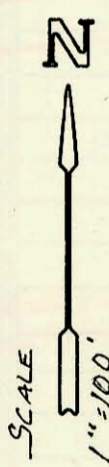
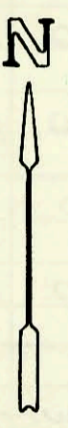
(this project started in 4/82)

SCALE 1"=150'



Priv. San. Sewer for Jack Caldwell One
 Proj. No. 607861-204 PPS
 Built By Stennard Const.
 Booked 4-19-89 from As-Built Plan.

Wayne Riddle, Water Dept.
 was advised by Jim Webber
 County that this sewer
 connects with Oaklawn
 sewer. Direct any
 inquiries to County
 2-28-95
 BR



Scale of 1"=150'
 would have 300'
 ending here
 BR 10/17/90

NOT BUILT ACCORDING
 TO VERN (CID)

EXIST PERRYTON

Refer to
 L 281
 main replace
 with 18" main

44

TTP

CONSTRUCTION RECORD

SERVICE RECORD

STATION	ELEVATION		Depth	MANHOLE	4-INCH "Y" BRANCHES		No. of Permit		House Number		DATE OF PERMITS	
	Ground	Grade			North West	South East	North West	South East	North West	South East	North West	South East
Priv. S.S. for Northfork Addition												
Line 1 0+00	1374.0	1364.10	9.9	0+00								
1+00	1370.9	1364.40	6.5		1+26.0 TAP		11440		6449 Rodeo		7-11-84	
2+00	1371.6	1364.70	6.9		1+34.0 TAP		11441		6471 Rodeo		7-11-84	
3+00	1372.4	1365.00	7.4		2+25.0 TAP		11653		6475 Rodeo		8-1-84	
4+00	1373.50	1365.17 OUT 1365.27 IN	8.3	3+55	2+41.0 TAP		11652		6477 Rodeo		8-01-84	
5+00	1372.8	1365.41	7.4		3+12.0 TAP		13462		6479 Rodeo		4-12-85	
6+00	1370.8	1366.01	4.8		3+32.0 TAP		13463		6471 Rodeo		4-12-85	
7+00	1370.2	1366.31	3.9			4+58.0 TAP		24203		6515 Rodeo		10-31-89
8+00	1371.0	1366.71	4.3			4+60.0 TAP		24202		6511 Rodeo		10-31-89
9+00	1371.8	1367.01	4.8			5+50.0 TAP		24381		6514 Rodeo		11-29-89
10+00	1372.0	1367.31	4.7			5+51.0 TAP		24382		6521 Rodeo		11-29-89
11+00	1370.50	1366.45 OUT 1366.55 IN	4.1	7+48.3								
12+00	1375.0	1369.32	5.7									
13+00	1375.6	1369.62	6.0									
14+00	1375.90	1369.81	6.1	13+65								
15+00	1375.0	1369.92	5.1									
16+00	1376.4	1370.22	6.2									
Line 2 0+00	1381.80	1367.53	14.3	0+00	4" stub N		08116		6496 Rodeo		5-10-83	
1+00	1380.0	1367.93	12.1		0+45.0 TAP		07924		6498 Rodeo		4-26-83	
2+00	1378.6	1368.33	10.3	2+00	0+76.0 TAP		10924		6510 Rodeo		3-8-84	
3+00	1377.2	1368.73	8.5		2+15.5 TAP		10925		6512 Rodeo		3-8-84	
4+00	1377.20	1368.85 OUT 1368.95 IN	8.3	3+30	2+82.0 TAP		24321		6514 Rodeo		11-16-89	
5+00	1377.20	1369.20	8.0	3+90	2+83.0 TAP		24322		6516 Rodeo		11-16-89	
Line 3 0+00	1381.0	1366.55	14.5	0+00	MH TAP	MH TAP	08821	08824	6518 Rodeo	6520 Rodeo	7-27-83	7-27-83
1+00	1380.0	1366.75	13.3		9" stub SE		3125	09259	6753 Perlyton	6602 Rodeo	4-17-97	9-22-83
2+00	1378.2	1366.95	11.3		4" sch 40 2+63 Predco	4" sch 40 PVC 2+74.1 tap	3124	2557	6754 Perlyton	6807 Rodeo	4-17-97	10-26-93
3+00	1377.10	1367.15	10.0	3+00	4" sch 40 2+76.0	4" PVC 2+72	3109	2558	6759 Perlyton	6809 Rodeo	2-25-97	10-26-93
Line 4 0+00	1373.0	1363.41	9.6	0+00			3103	2748	6805 Perlyton	6815 E Rodeo	2-25-97	11-2-94
1+00	1376.0	1363.77	12.2	0+90			2775		6817 Rodeo		1-31-95	
Priv. S.S. for Jack Caldwell One 0+00	1316.84	1309.22	7.6	EXIST 0+00			18882		4700 Rodeo		1-7-85	
1+00	1319.7	1309.93	9.8									
2+00	1321.73	1310.14 OUT 1310.23 IN	11.6	1+29.0								
3+00	1320.4	1310.46	9.9			4" sch 40 PVC 1+94.0 tap						
4+00	1321.1	1310.79	10.3									
5+00	1322.98	1310.90	12.1	3+32	8" stub N							

Form #192-020 (July, 1981)
 #2436-9/23/92 - 6610 E Rodeo Ct - VC - (Tap 13' N of a MH)
 #2437-9/23/92 - 6612 E Rodeo Ct - VC - (Tap 12' N of a MH)