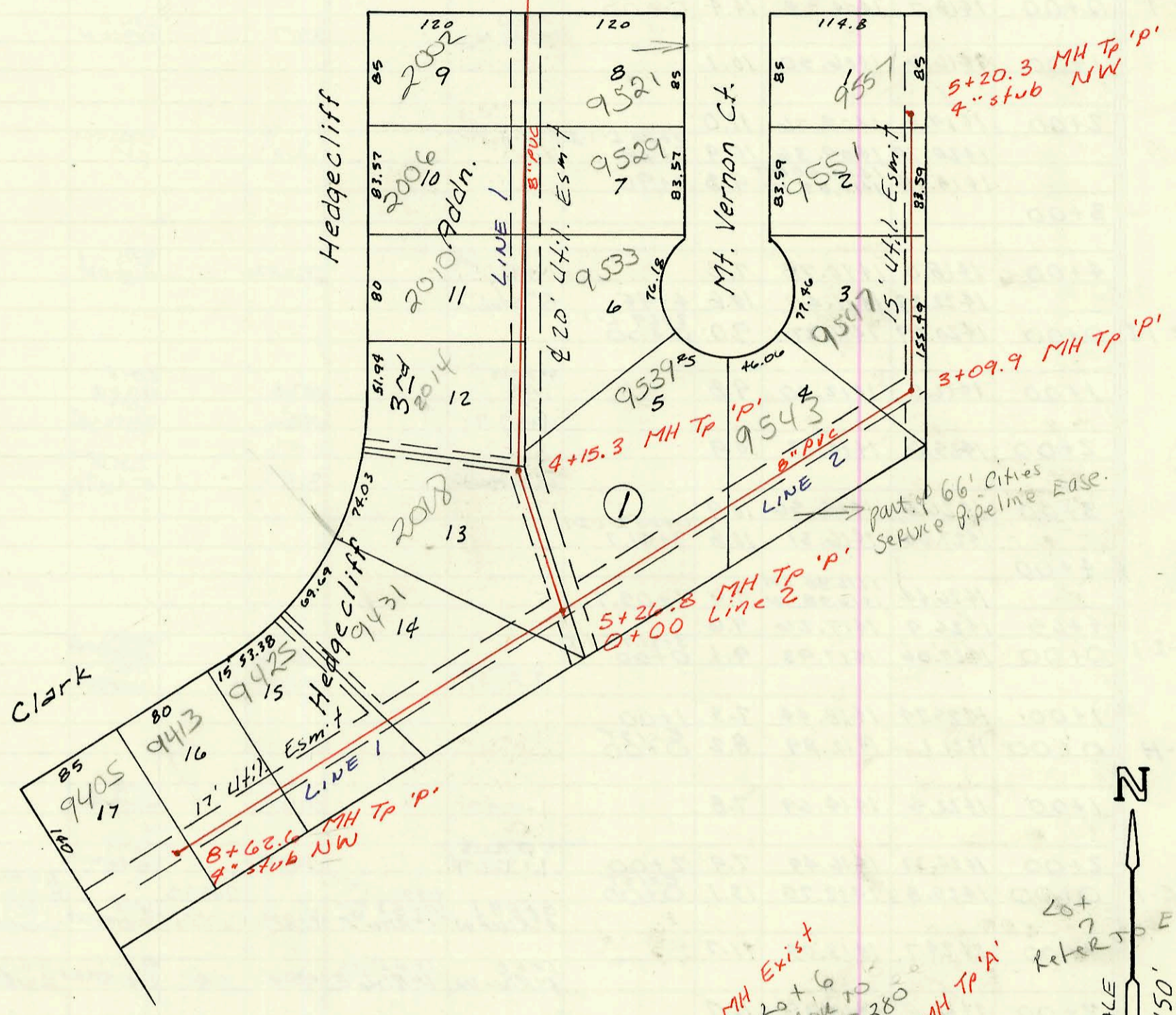
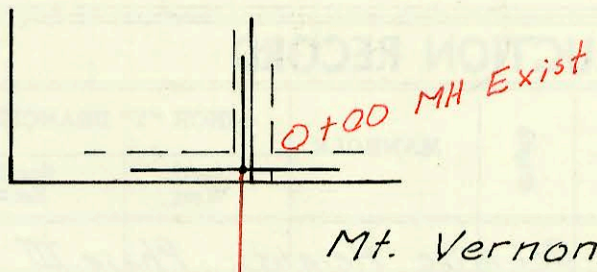
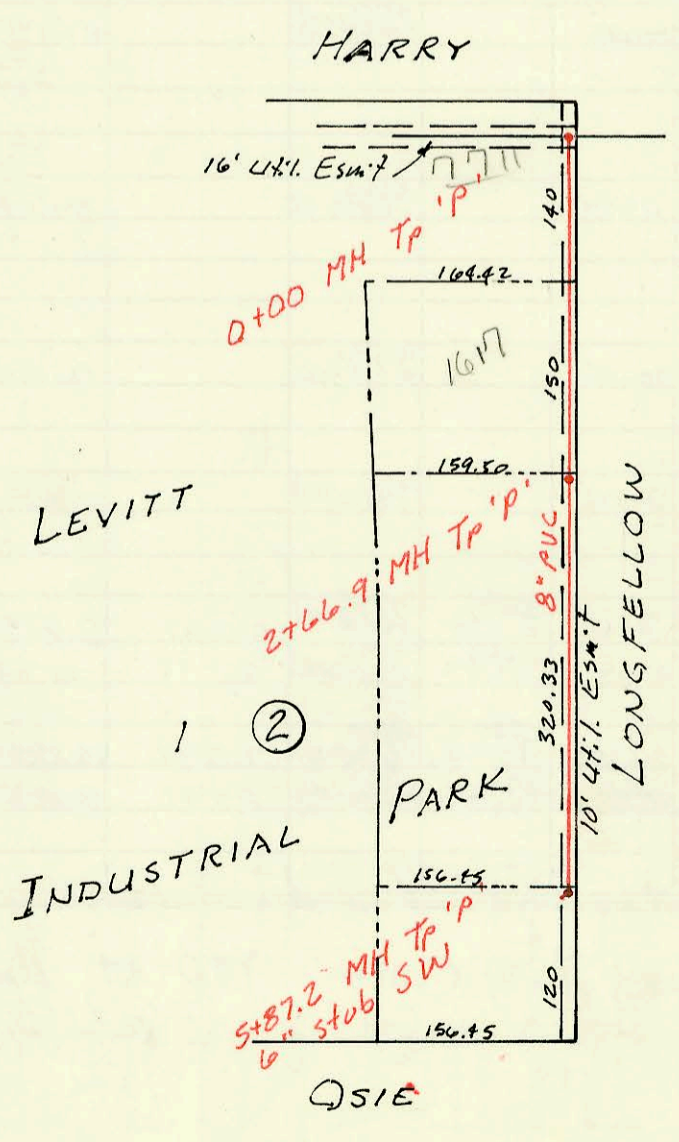
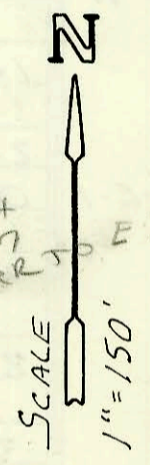
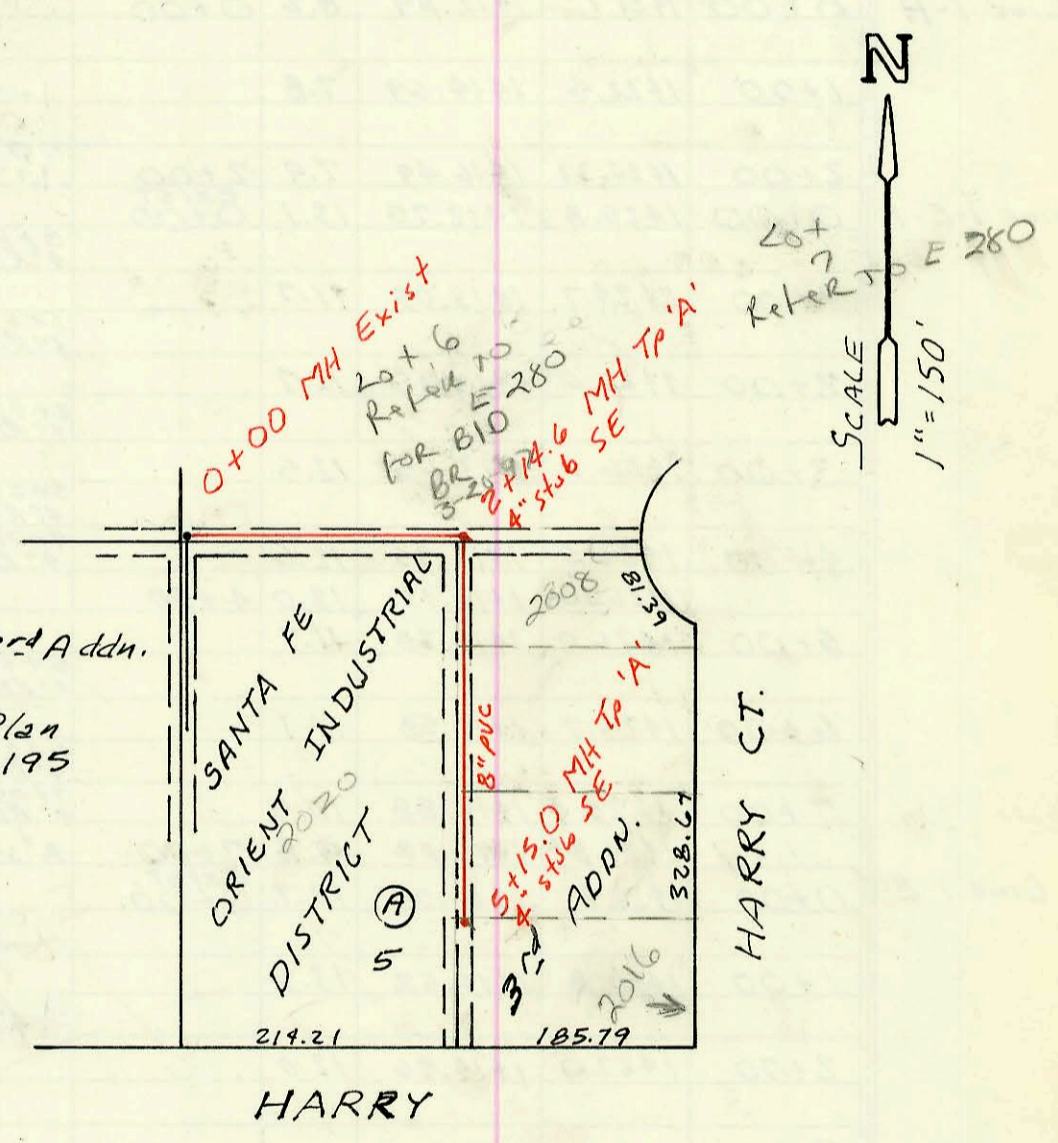


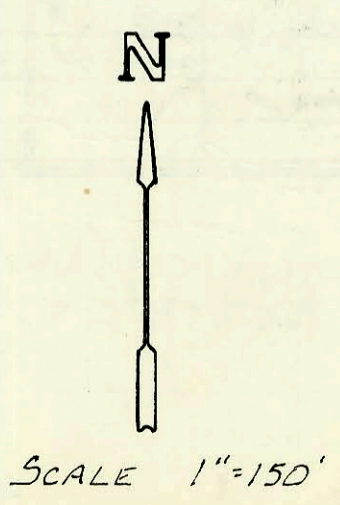
LAT 101, WAR INDUSTRIES SEWER
468-76-245-81903-000-001
Built By Nowak Const.
Booked 4-12-89 from Plan



Priv. San. Sewer for Lot 5
Santa Fe Orient Industrial Dist. 3rd Addn.
Built By Williams Const.
Booked 4-19-89 from As Built Plan
Proj. No. 468-76-245-80001-000-000-195



LAT 16, MAIN 16, WAR INDUSTRIES SEWER
468-81752 (608059)
Built By Stannerd Const.
Booked 5-12-89 from Plan



CONSTRUCTION RECORD						SERVICE RECORD						
STATION	ELEVATION		Depth	MANHOLE	4-INCH "Y" BRANCHES		No. of Permit		House Number		DATE OF PERMITS	
	Ground	Grade			North West	South East	North West	South East	North West	South East	North West	South East
LAT 10, WIS												
Line 1 0+00	178.0	165.22	12.8	EXIST. 0+00								
1+00	177.3	165.62	11.7		4" sch 40 1+05.0 tap		92-3666-7	92-23786-7	2052 Hedgecliff	9521 MT VERMONT	10-9-92	8-20-92
2+00	178.1	166.02	12.1		4" PVC 40 2+14.8 tap 4" SDA 35 2+84.3 tap	4" sch 40 2+27.8 tap	91-31472-7	91-31470-7	2006 Hedgecliff	9529 MT VERMONT	8-29-91	8-29-91
3+00	178.8	166.42	12.4		4" SDA 35 3+32.3 tap	4" SDA 35 2+99.5 tap	91-29657-7	92-8214-7	2019 Hedgecliff	9535 E MT VERMONT	9-22-91	6-4-92
4+00	180.0	166.82	13.2									
	180.3	166.88 OUT 166.98 IN	13.4	4+15.3	4" SDA 4+75.3 tap		91-21206-7		2018 Hedgecliff		4-29-91	
5+00	181.3	167.32	14.0									
	181.6	167.43 OUT 167.53 IN	14.2	5+26.8								
6+00	181.1	168.19	12.9		4" SDA 35 6+41.3 tap		91-32815-7		9431 E CLARK		9-17-91	
7+00	181.0	169.09	11.9		4" sch 40 PVC 7+27.6 tap		91-37098-7		9425 CLARK		11-12-91	
8+00	182.0	169.99	12.0		4" PVC 40 8+29.6 tap		92-3531-7		9413 CLARK		3-12-92	
	182.2	170.55	11.7	8+62.6	4" sch 40 PVC 4" stub NW		91-9094-7		9405 CLARK		12-12-91	
Line 2 0+00	181.6	167.51	14.1	5+26.8 L-1 0+00								
1+00	181.8	167.91	13.9		4" sch 40 PVC 1+23 tap		91-37009-7		9539 E MT VERMONT		11-12-91	
2+00	182.5	168.31	14.2									
3+00	183.8	168.71	15.1									
	183.9	168.75 OUT 168.85 IN	15.2	3+09.9	4" sch 40 3+94.7 tap		92-23791-7		9543 E MT VERMONT		8-20-92	
4+00	183.3	169.21	14.1		4" SDA 35 3+76.9 tap		92-3913-7		9544 MT VERMONT		3-18-92	
5+00	182.7	169.61	13.1		4" PVC 40 4+97.3 tap		92-28685-7		9551 MT VERMONT		9-8-92	
	182.7	169.69	13.0	5+20.3	4" stub NW		92-21523-7		9557 E MT VERMONT		8-9-93	
Priv. San. Sewer for Lot 5, Santa Fe Orient Industrial Dist. 3rd Addn.												
0+00	107.1	101.31	5.8	EXIST. 0+00								
1+00	107.0	101.61	5.4									
2+00	107.7	101.91	5.8									
	108.2	101.95 OUT 102.05 IN	6.3	2+14.6		4" stub SE		23175		200804 HARRY CH		5-19-89
3+00	107.7	102.31	5.4									
4+00	107.9	102.61	5.3									
5+00	108.0	102.91	5.1									
	108.6	102.95	5.7	5+15		4" stub SE		23173		2016 HARRY CH		5-18-89
LAT 16, MAIN 16, WIS												
0+00	155.38	147.52	7.9	0+00								
1+00	156.1	148.04	8.1									
2+00	156.1	148.55	7.6				2+06.9 TAP	22974	1017 Lang Fellow		9-21-89	
	156.84	148.90	7.9	2+66.9								
3+00	157.0	149.07	7.9									
4+00	157.6	149.59	8.0									
5+00	158.2	150.11	8.1									
	158.92	150.56	8.4	5+87.2								
Priv. S. S. L-1-E-5 for Kappelman's Bel Aire Heights Phase III (cont from K-298)												
0+00	1425.36	1416.72	7.8	EXIST. 0+00								
1+00	1424.2	1412.07	7.1		4" sch 40 0+67 Saddle	4" sch 40 0+70.6	3362	2843	4921 FURNISHED	5614 FURNISHED	8-17-98	9-26-95
2+00	1424.4	1417.41	7.0		4" sch 40 2+33	4" SDA 35 1+87.0 4" sch 40 2+58	3005	3048 3455	4997 FURNISHED	5618 4" 48" CK 5627 48" CK	2-17-00	10-11-96 1-26-98
3+00	1424.5	1417.76	6.7		4" sch 40 3+31	4" SDA 35 3+08.0 tap	504 499-3567	2534	4915 FURNISHED	5626 4" 48" CK	6-29-99	9-29-93
4+00	1424.8	1418.11	6.7		4" sch 40 3+63.4	4" SDA 35 3+99.0 tap	3166	2533	4913 FURNISHED	5630 4" 48" CK	7-21-97	9-29-93
	1424.38	1418.34	6.1	4+26								