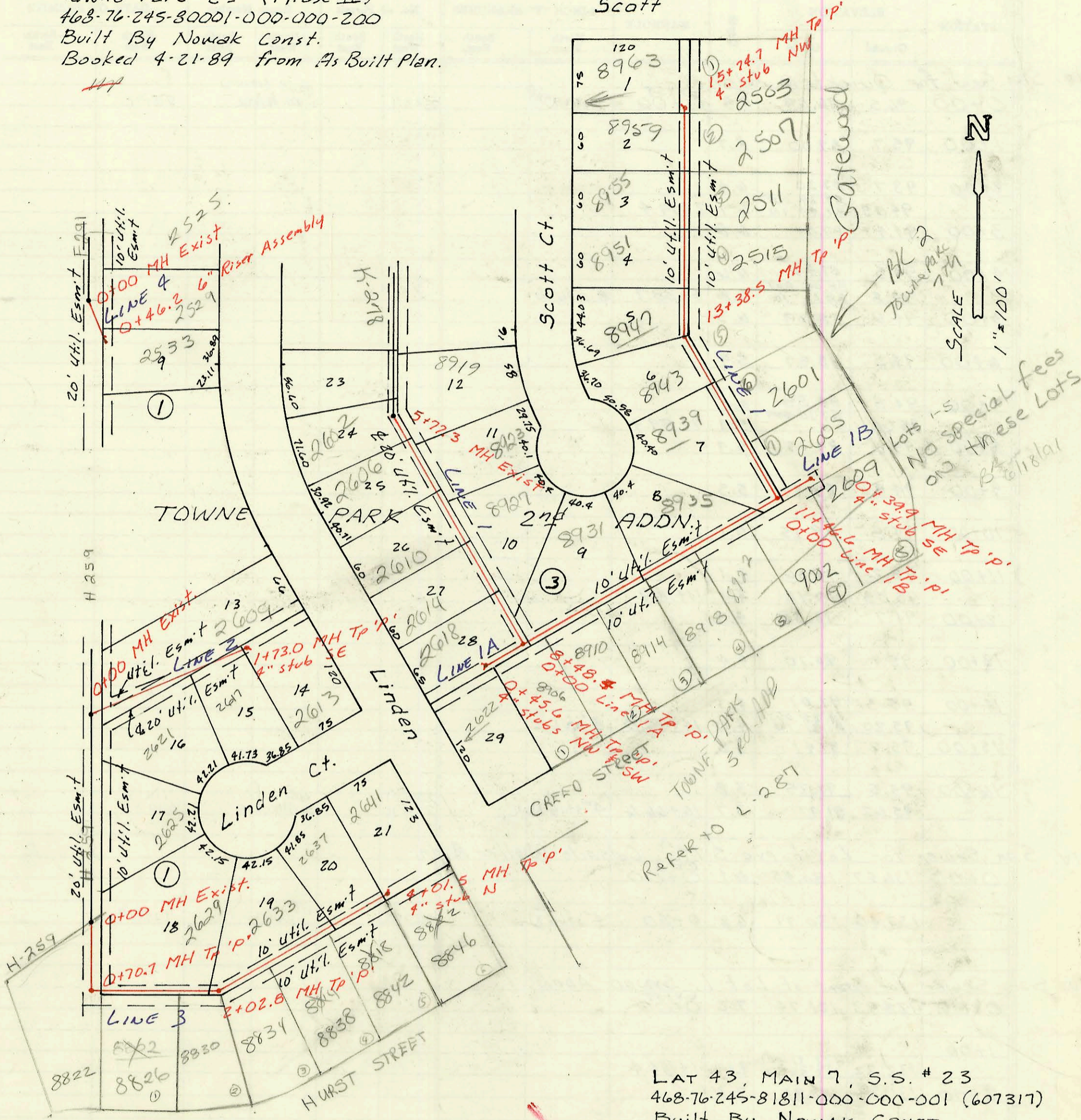
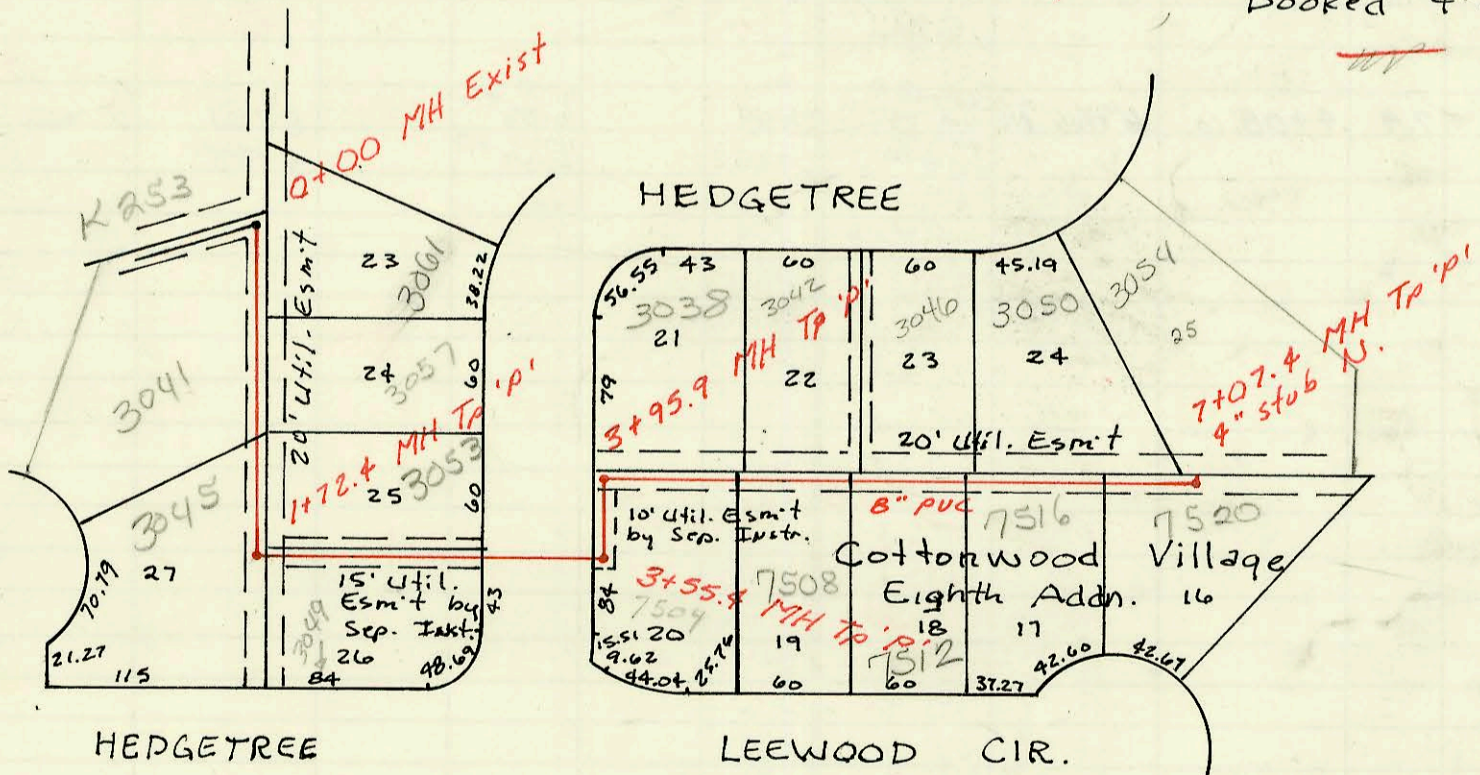


Priv. San. Sewer for
Towne Parc 2nd (Phase II)
468-76-245-80001-000-000-200
Built By Nowak Const.
Booked 4-21-89 from As Built Plan.



LAT 43, MAIN 7, S.S. # 23
468-76-245-81811-000-000-001 (607317)
Built By Nowak Const
Booked 4-25-89 from Plan



CONSTRUCTION RECORD							SERVICE RECORD					
STATION	ELEVATION		Depth	MANHOLE	4-INCH "Y" BRANCHES		No. of Permit		House Number		DATE OF PERMITS	
	Ground	Grade			North West	South East	North West	South East	North West	South East	North West	South East
Priv. S.S. for Towne Parc 2 nd (Phase II)												
Line 1	0+00	212.38	198.53	13.9	EXIST. 5+77.3	5+90.2 TAP		25224		2602 Linden		4-24-90
	6+00	212.3	198.61	13.7		6+55.3 TAP	6+68.3 TAP	24713	24319	2605 Linden	8923 Scott Ct	1-25-90 11-20-89
	7+00	213.0	198.96	14.0		6+97.3 TAP	7+69.4 TAP	24714	23409	2610 Linden	8927 W. Scott Ct	1-25-90 4-24-90 6-22-89
	8+00	213.5	199.31	14.2		8+38.4 TAP		24144		2611 Linden		10-19-89
	9+00	213.95	199.68	14.5	0+00 L-1A 8+48.4	9+15.0 TAP	4" SDR 102' West of EPL	23658	05293	8931 Scott Ct	8910 Creed	8-1-89 5-14-91
	10+00	214.0	199.88	14.1		10+46.6 TAP	4" SDR 13' West of EPL		00225	8935 Scott Ct	8914 Creed	5-14-91
	11+00	214.2	200.27	13.9		10+116.6 TAP	4" SDR 10+03.6 top	24717	00296	8935 Scott Ct	8918 Creed	1-25-90 5-14-91
	12+00	214.3	200.65	13.7								
		214.41	200.83	13.6	0+00 L-1B 11+46.6							
	12+00	213.7	201.24	12.5		12+09.6 TAP		23385	2001-02218	8939 Scott Ct	2601 Gatewood	6-19-89 9-6-01
	13+00	213.0	201.66	11.3		13+26.5 TAP		25454		8943 Scott Ct		6-4-90
		212.90	201.94	11.1	13+38.5	13+52.5 TAP		25182		8947 Scott Ct		4-18-90
	14+00	211.9	202.17	9.7		14+04.5 TAP	4" SDR 14+10.8 saddle	24318	2000-02213	8951 Scott Ct	2515 Gatewood	11-20-89 10-10-00
						14+65.7 TAP	4" SDR 14+79.5	24317	2500-01858	8955 Scott Ct	2511 Gatewood	11-20-89 18-21-80
	15+00	210.7	202.52	8.2		15+47.7 TAP		23561	2000-01009	8957 Scott Ct	2507 Gatewood	7-19-89 4-25-00
		209.95	202.80	7.2	15+74.7	4" stub NW		23283	00571	8963 Scott Ct	2503 Gatewood	5-24-89 3-2-00
Line 1A	0+00	214.41	203.73	10.7	8+48.4 L-1	0+00	4" SDR 0+27.0 top	24201		8966 Creed		3-5-91
		213.95	204.50	9.5	0+45.6	4" stub NW	4" SDR 0+14 saddle	26193		2622 Linden		9-25-90
Line 1B	0+00	214.41	203.73	10.7	11+46.6 L-1	0+00	4" SDR 0+14 saddle	2001-00445		907 Creed		2-28-01
		213.94	204.50	9.4	0+39.9	4" stub SE		2001-01324	02467	2605 S Gatewood	2609 S Gatewood	5-31-01 10-4-01
Line 2	0+00	211.17	199.99	11.2	EXIST. 0+00	0+20.0 TAP		26323		2621 Linden		10-16-90
	1+00	212.0	200.41	11.6		1+58.6 TAP	1+55.0 top	23227	26195	2609 Linden	2617 Linden Ct	5-24-89 9-25-90
		212.41	200.72	11.7	1+73.0	4" stub SE		25789		2613 Linden Ct		7-25-90
Line 3	0+00	211.44	201.49	10.0	EXIST. 0+00	0+59.7		15-33017		8822 Hurst		4-10-95
	1+00	212.0	202.12	9.9		1+04.7 TAP	4" SDR 1+68.7 top	26743		8826 Hurst		12-11-90
						1+74.7	4" SDR 2+35.8 top	25988	27002	2629 Linden	8835 Hurst	8-21-90 3-5-91
	2+00	211.44	202.45	9.0	2+02.8	2+88.8 TAP	2+72.8 TAP	91-27399		2633 Linden	8838 Hurst	7-18-91 11-13-90
	3+00	211.7	203.01	8.7		3+84.5 TAP	3+61.0 TAP	26194	26607	2637 Linden	8842 Hurst	9-25-90 11-27-90
	4+00	212.34	203.39	9.0	4+01.5	4" stub N	MA top SE	25627	26744	2641 S Linden	8846 Hurst	6-27-90 12-11-90
Line 4	0+00	207.96	199.57	8.4	0+00			23224		2633 Linden		5-24-89
LAT 43, Main 7, S.S. # 23	0+00	195.49	182.18	13.3	0+00	0+19.0 TAP	4" SDR 0+10.0 top	24663	9134287	3041 Hedgetree	3061 Hedgetree	1-22-90 10-3-91
						1+61.4 TAP	4" SDR 1+20.4 TAP	26461		3057 Hedgetree	3053 Hedgetree	11-3-90
	1+00	195.0	182.63	12.4	1+72.4	1+72.4 TAP	4" SDR 2+63.4 top	23041	23042	3045 Hedgetree	3053 Hedgetree	4-28-89 4-28-89
		193.80	183.04	10.8				2330-7		3059 Hedgetree		6-2-91
	2+00	194.0	183.20	10.8								
	3+00	193.2	183.70	9.5								
		193.70	183.98	9.7	3+55.4	3+69.9 TAP		26462		7504 Leewood		11-03-90
		194.10	184.28	9.8	3+95.9							
	4+00					4+29.9 TAP	4+91.9 TAP	25133	26462	3038 Hedgetree	7504 Leewood	4-13-90 11-3-90
								23475		7508 Leewood		7-5-89
	5+00	194.5	185.21	9.3		5+03.9 TAP	5+70.4 TAP	26282		3042 Hedgetree		10-4-90
						6+73.4 top		23971-7	25375	3046 Hedgetree	7512 Leewood	6-11-91 5-18-90
	6+00	196.0	186.01	10.0								
						6+43.9 top	6+17.0 TAP	7137459	23539	3550 Hedgetree	7516 Leewood	12-24-91 4-28-89
	7+00	197.5	186.81	10.7		6+84.4 TAP		25801		7520 Leewood		7-25-90
		198.20	186.87	11.3	7+07.4	4" stub N		26051		3054 Hedgetree		8-29-90