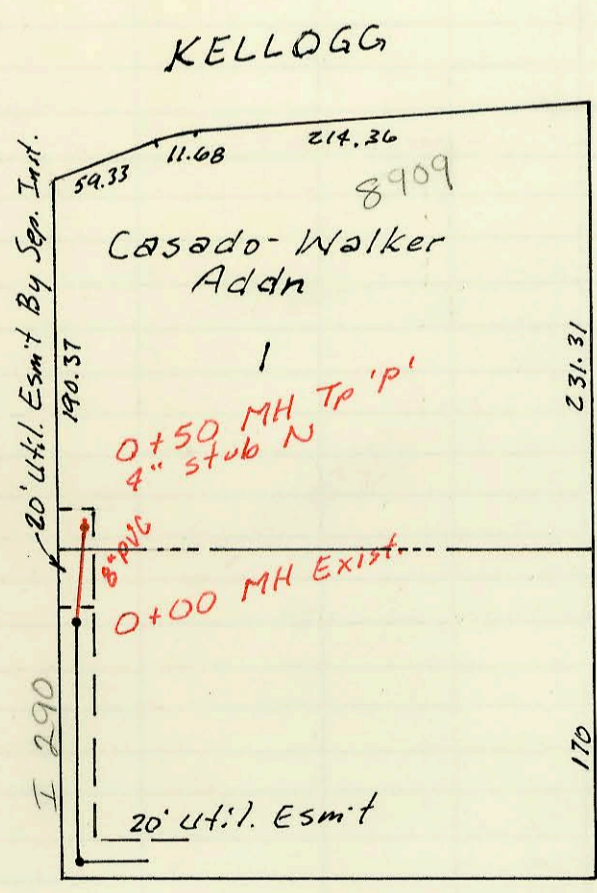
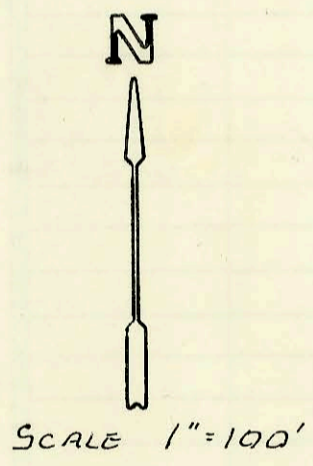
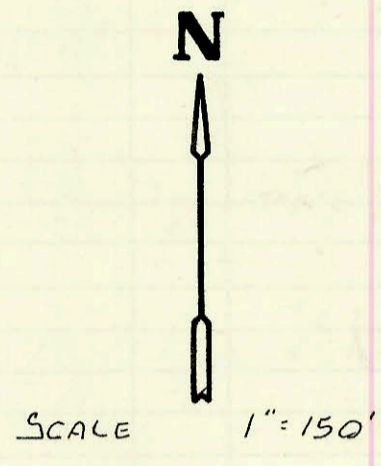
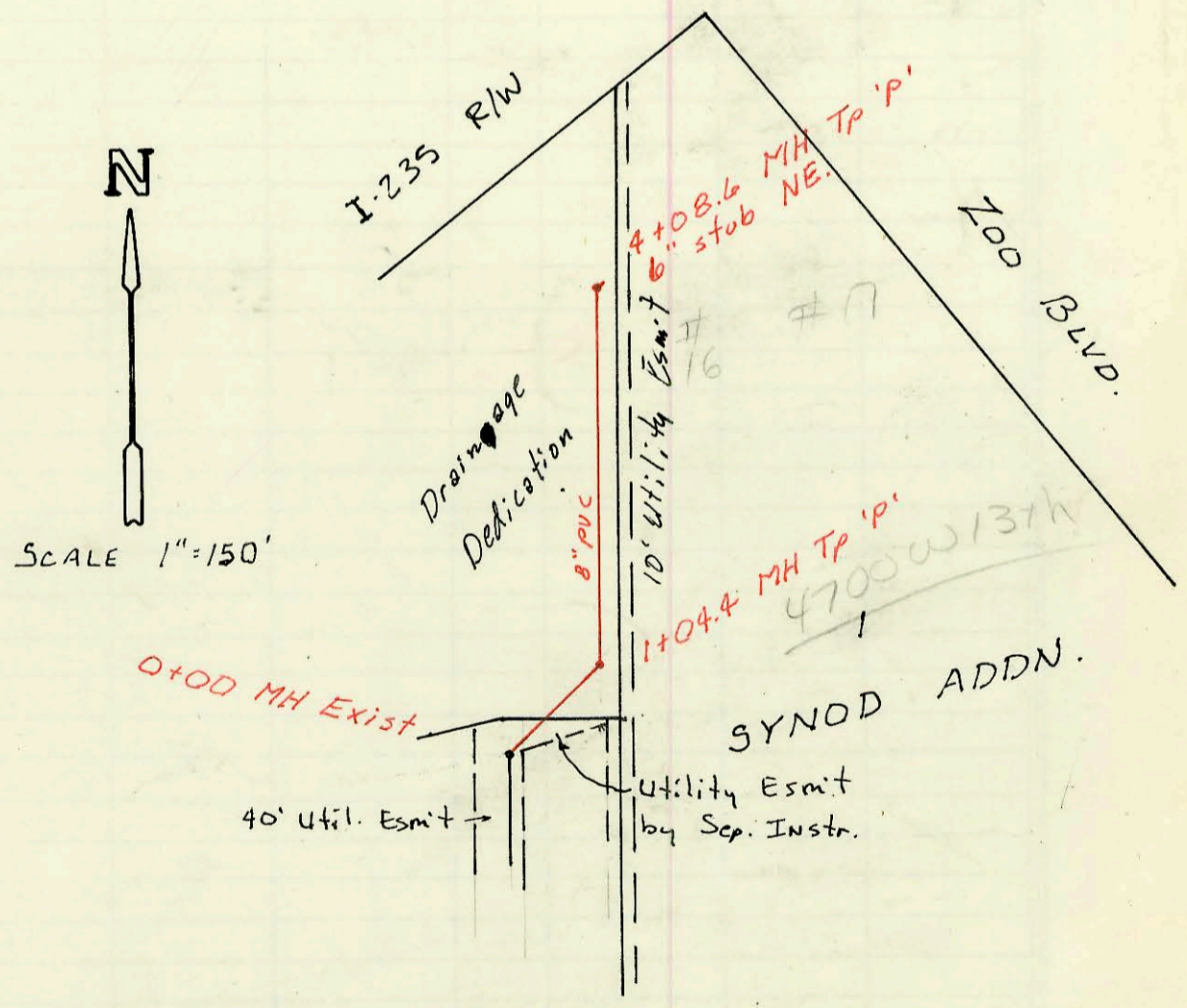


Priv. San. Sewer for Quicktrip 1st Addn.
 468-76-245-80001-000-000-193
 Built By Morris Const.
 Booked 5-4-89 from As-Built
 MP



Priv. San. Sewer for Lot 1, except S 170'
 Casado-Walker Addn.
 Proj. No. 208PPS-607861
 Built By Stannard Const., Booked 5-4-89
 HT



Priv. San. Sewer for Part Lot 1, Synod Addn.
 Proj. No. 205 PPS - 607861
 Built By STANNARD CONST. Booked 5-89
 HT

| CONSTRUCTION RECORD | | | | | | SERVICE RECORD | | | | | | |
|--|-----------|-------------------------|-------|---------|---------------------|----------------|---------------|----------------|--------------|--|-----------------|--------------------|
| STATION | ELEVATION | | Depth | MANHOLE | 4-INCH "Y" BRANCHES | | No. of Permit | | House Number | | DATE OF PERMITS | |
| | Ground | Grade | | | North West | South East | North West | South East | North West | South East | North West | South East |
| Priv. San. Sew. for Quicktrip Adn. ^{EXIST} | | | | | | | | | | | | |
| 0+00 | 96.5 | 86.69 | 9.8 | 0+00 | 0+61.8 TAP | | | 23834 | | 2295 (House) W. MacArthur | | 9-5-89 |
| 1+00 | 95.7 | 87.00 | 8.7 | | | | | | | | | |
| 2+00 | 93.7 | 87.30 | 6.4 | | | | | | | | | |
| | 94.05 | 87.34 OUT 87.47 IN | 6.7 | 2+19.4 | | | | | | | | |
| 3+00 | 94.4 | 87.64 | 6.8 | | | | | | | | | |
| 4+00 | 94.5 | 87.93 | 6.6 | | | | | | | | | |
| | 94.8 | 88.04 OUT 88.12 IN | 6.8 | 4+38.7 | 8" stub W | | | | | | | |
| 5+00 | 94.6 | 88.29 | 6.3 | | | | | | | | | |
| 6+00 | 94.5 | 88.57 | 5.9 | | | | | | | | | |
| 7+00 | 94.8 | 88.85 | 6.0 | | | | | | | | | |
| | 95.00 | 89.10 | 5.9 | 7+89.9 | | | | | | | | |
| 8+00 | 95.0 | 89.13 | 5.9 | | | | | | | | | |
| 9+00 | 94.9 | 89.44 | 5.5 | | | | | | | | | |
| 10+00 | 94.8 | 89.75 | 5.1 | | | | | | | | | |
| 11+00 | 95.2 | 90.06 | 5.1 | | | | | | | | | |
| | 95.03 | 90.12 | 4.9 | 11+18.9 | | | | | | | | |
| 12+00 | 94.7 | 90.38 | 4.3 | | | | | | | | | |
| 13+00 | 95.1 | 90.70 | 4.4 | | | | | | | | | |
| 14+00 | 95.3 | 91.01 | 4.3 | | | | | | | | | |
| | 95.20 | 91.24 OUT 91.31 IN | 4.0 | 14+70.8 | 8" stub N | | | | | | | |
| 15+00 | 95.2 | 91.41 | 3.8 | | | | | | | | | |
| 16+00 | 95.5 | 91.75 | 3.8 | | | | | | | | | |
| | 95.62 | 91.97 | 3.7 | 16+66.6 | 4" stub NW | | | 23509 23371 | | 4020 R S. Meridian | | 7-11-89 6-19-89 |
| Priv. San. Sewer for Lot 1, exc S 170' Casado-Walker Adn. ^{EXIST} | | | | | | | | | | | | |
| 0+00 | 136.57 | 130.45 | 6.1 | 0+00 | | | | | | | | |
| | 137.46 | 130.71 | 6.8 | 0+50 | 4" stub N | | | 22991 | | 8709 W. Kellogg | | 4-24-89 |
| Priv. San. Sewer for part of Lot 1, SMOOD ADON. ^{EXIST} | | | | | | | | | | | | |
| 0+00 | 128.93 | 121.74 | 7.2 | 0+00 | | | | | | | | |
| 1+00 | 132.32 | 123.31 OUT 123.53 IN | 9.0 | 1+04.4 | | | | | | | | |
| 2+00 | 131.2 | 123.91 | 7.3 | | | | | | | | | |
| 3+00 | 131.9 | 124.31 | 7.6 | | | | | | | | | |
| 4+00 | 132.63 | 124.77 | 7.9 | 4+08.6 | 6" stub NE | | | 23129 23352 | | 4700 #16 W 137th 4700 #17 W 137th | | 5-11-89 6-14-89 |