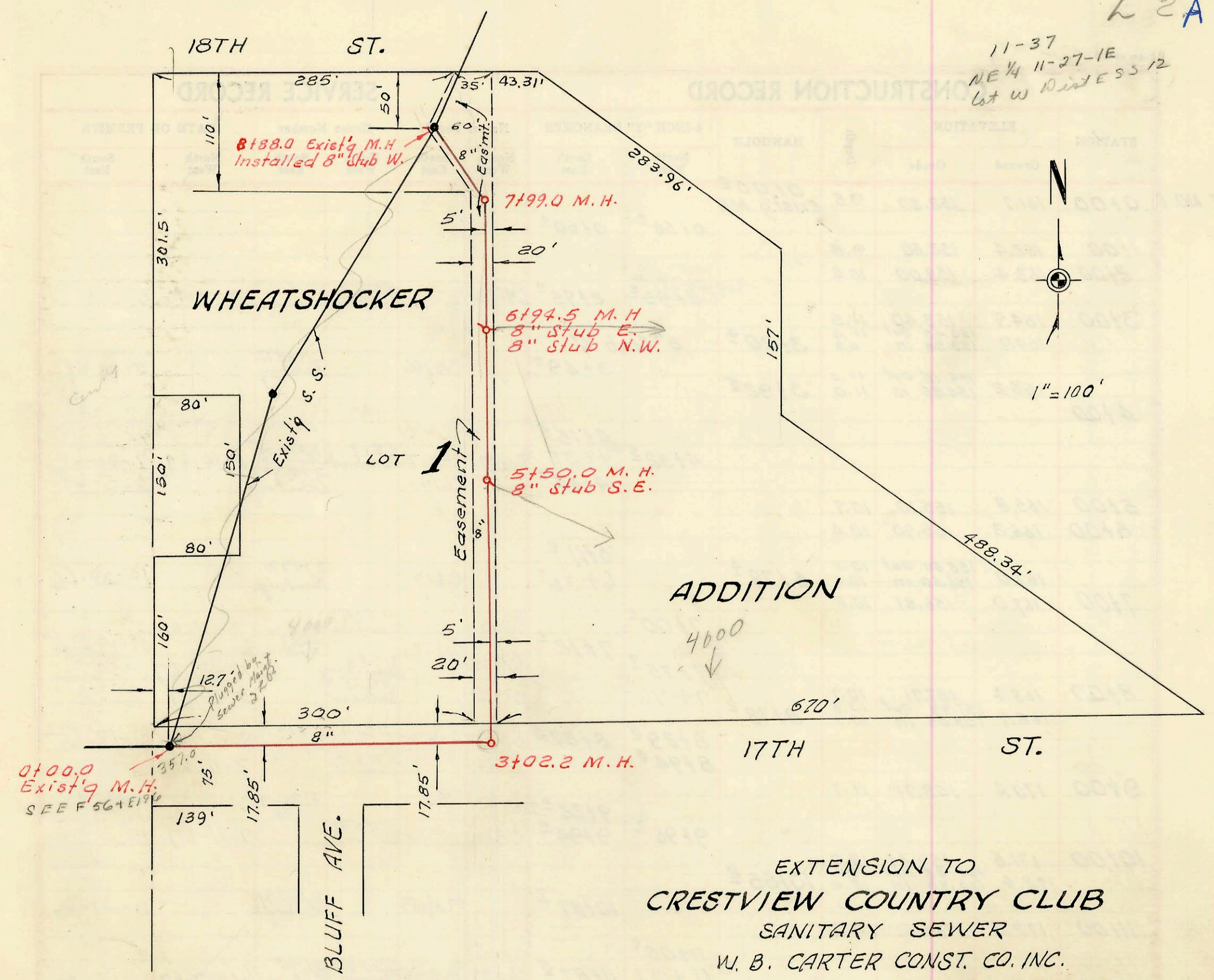
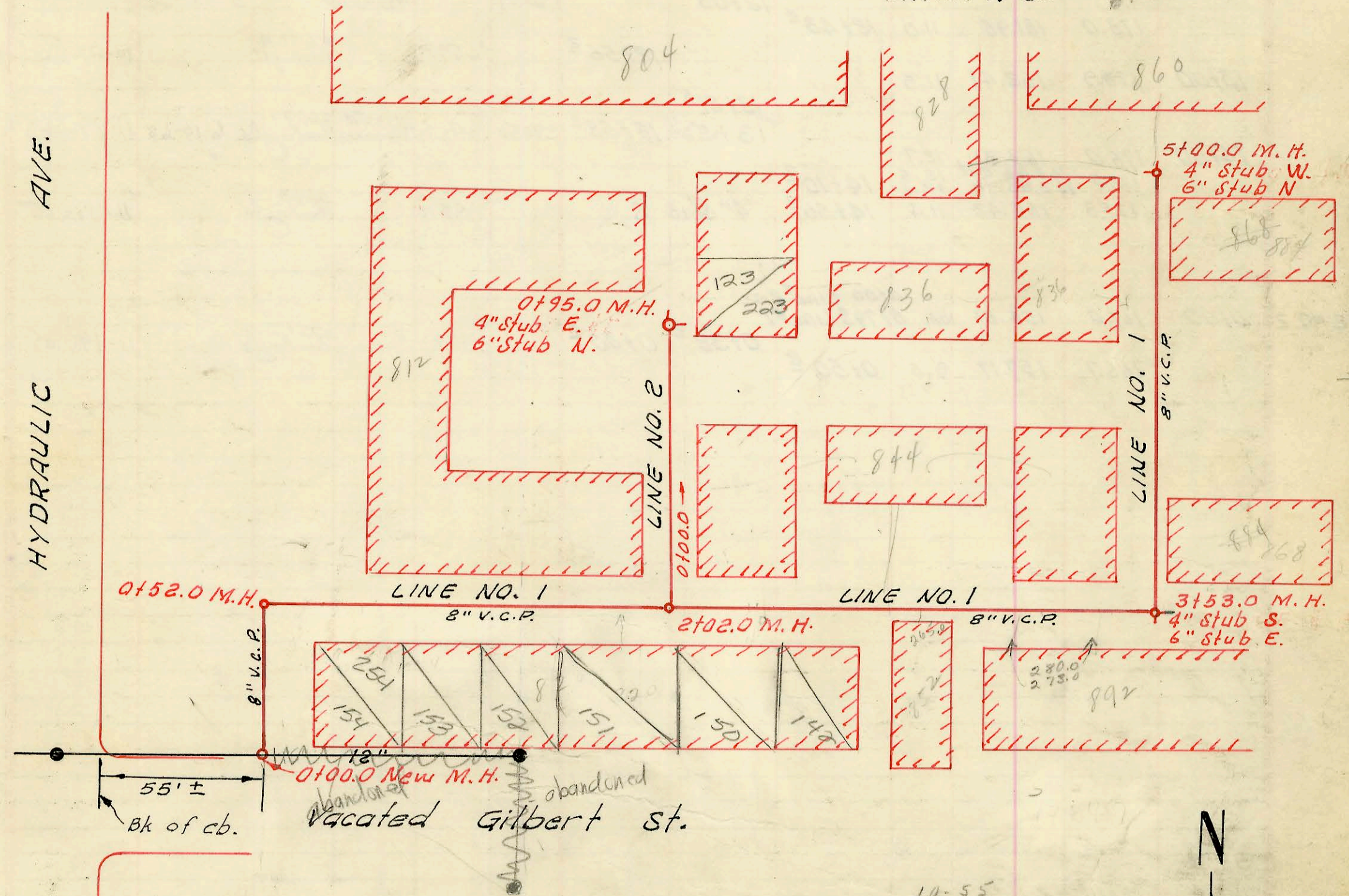


L 2 A

11-37
NE 1/4 11-27-1E
Lot W Address 12



EXTENSION TO
CRESTVIEW COUNTRY CLUB
 SANITARY SEWER
 W. B. CARTER CONST. CO. INC.
 MAY 1965, PRIVATE CONTRACT
 Bk. No. K-82



EXT. TO LAT. 3, S. S. NO. 20
 MID-STATES CONST. CO. INC.
 AUG. 3, 1965, BK NO. K-82
 BON HOMME APARTMENTS S. S.
 PRIVATE CONTR.
 9-21-65

10-55
00427 271E

CONSTRUCTION RECORD

SERVICE RECORD

STATION	ELEVATION		Depth	MANHOLE	4-INCH "Y" BRANCHES		No. of Permit		House Number		DATE OF PERMITS	
	Ground	Grade			North West	South East	North West	South East	North West	South East	North West	South East
0+00	206.8	197.95	8.8	0+00 Exist'g M.H.								
1+00	207.9	199.54	8.4									
2+00	210.3	201.12	9.2									
3+00	211.1	202.74 out 202.80 in	8.4 8.3	3+02 ^o								
4+00	212.2	203.20	9.0									
5+00	212.3	203.60	8.7									
6+00	212.3	204.00	8.3	5+50 ^o	5+39.5 8" wye	8" stub SE	#3336		4000 E 17th #50 Spec Fee Re #65867	3-4-65		
7+00	212.4	204.40	8.0	6+94 ^o	8" stub E 8" stub NW		3337		#50 Spec Fee Re #65867	5-4-65		
8+00	211.5	204.80 out 204.90 in	6.7 6.6	7+99 ^o	7+11 ^o							
	211.9	205.26	5.6	8+88 ^o	Exist'g M.H. New M.H.	Installed 8" stub W.			4000 E 17th			
LINE NO. 1												
0+00	102.8	98.00 out 98.34 in	4.8 5.7 5.6	0+00 ^o New M.H. 0+52 ^o								
1+00	104.2	98.50	5.7		0+76 ^o							
2+00	104.6	98.90	5.7	2+02 ^o	1+03 ^o		B4262	8 1/2 S. Hydraulic		10-4-65		
					2+04 ^o 2+65 ^o		8-3909	852 S. Hyd.		8-4-65		
					2+73 ^o 2+90 ^o							
3+00	104.5	99.50	5.0	3+53 ^o	4" stub S. 6" stub E. 3+77 ^o		B3903	876 S. Hyd.		8-4-65		
4+00	104.8	100.18	4.6		4+03 ^o 4+35 ^o	3+68	B4267	868 S. Hydraulic		10-4-65		
5+00	104.6	100.78	3.8	5+00 ^o	4+72 ^o		B-3907 B-3906	860 S. Hyd. stub N, 8-4-65 828 " " stub W, 8-4-65				
LINE NO. 2												
0+00	104.6	98.94	5.7	0+00 line 2 = 2+02.0 Line No. 1	0+23 ^o							
	104.6	99.95	4.6	0+95 ^o	0+80 ^o 4" stub E 6" stub N		B4263 8-3905	836 S. Hydraulic 804 S. Hyd.		10-4-65 Stub N 8-4-65		
B4360	top	820 S. Hydraulic		Koback Pkg			10-15-65	(1+93.4)				
B4361	top	820 S. Hydraulic		Koback Pkg				(1+35.5)				
B4362	top	872 S. Hydraulic		Koback Pkg				(2+80)				
B4363	top	872 S. Hydraulic		Koback Pkg				(2+73)				
B4268	top	838 S. Hydraulic		Koback Pkg			10-7-65	(4+84.7)				
B4266	top	844 S. Hydraulic		Koback Pkg			10-5-65	(3+26)				
B4265	top	844 S. Hydraulic		Koback Pkg			10-5-65	(2+31.4)				
B4264	top	836 S. Hydraulic		Koback Pkg			10-5-65	(4+32.7)				

EXT. Lat. 3, S. 5. No. 20
 Bon Homme Apartments S.S.