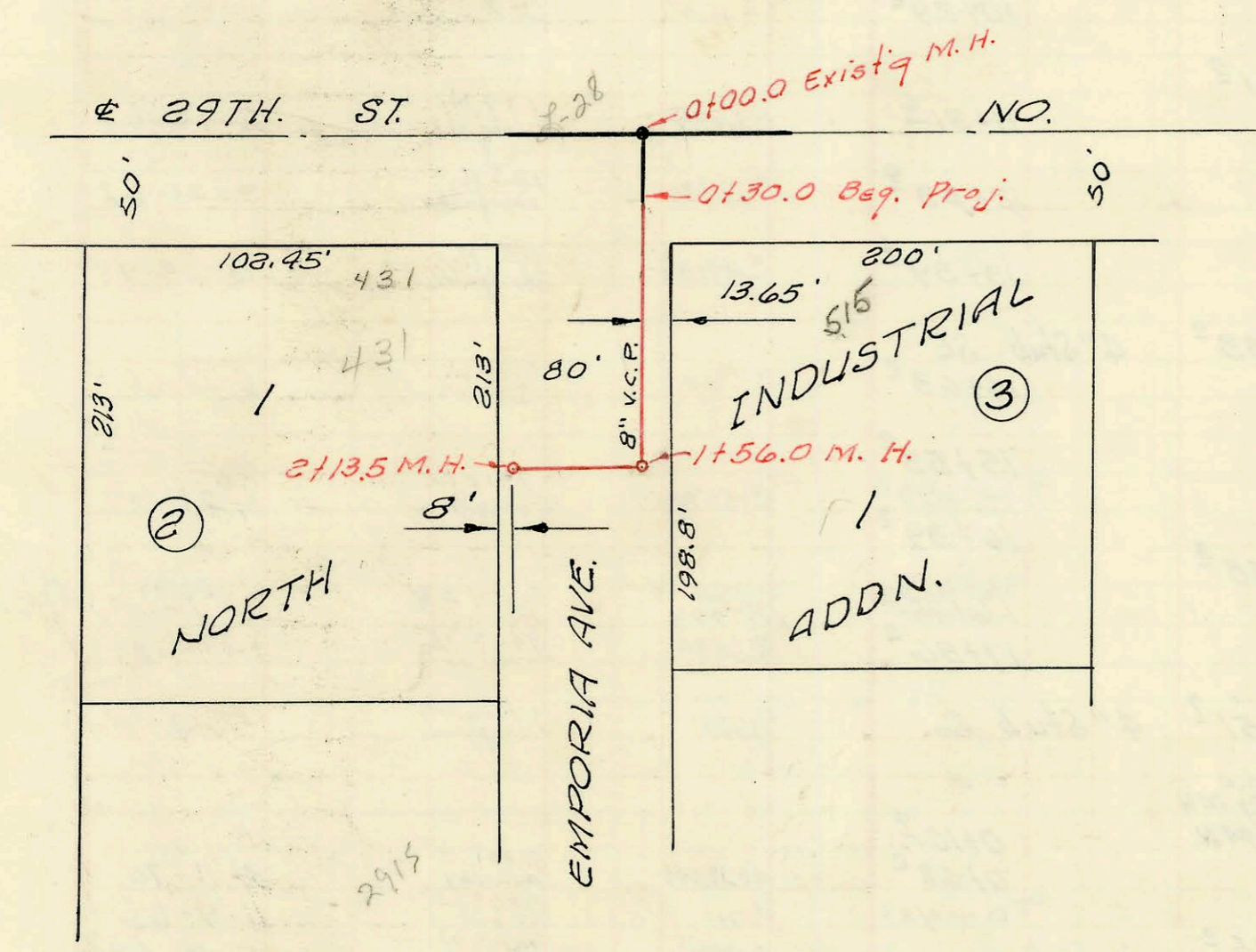


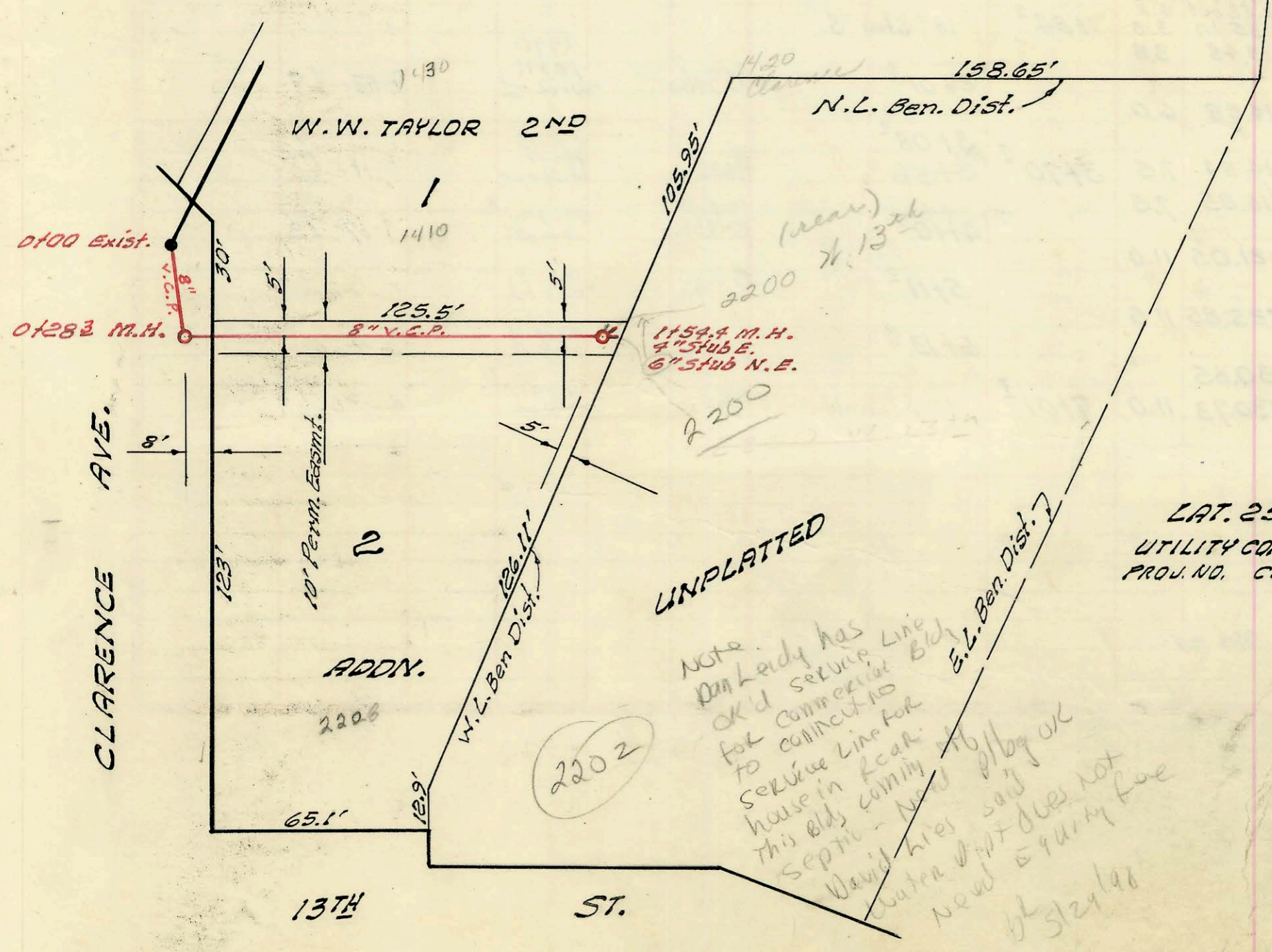
LAT. 50, SUB. 4, S. S. NO. 23  
 MID-STATES CONST. CO. INC.  
 BK. K-76 PRIVATE CONTR.  
 4-25-66



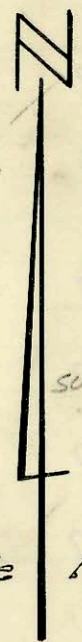
1" = 80'



LAT. 51, SUB. 4, S. S. NO. 23  
 MID-STATES CONST. CO. INC.  
 BK. K-76 PROJ. NO. C25-43  
 4-25-66



LAT. 25, SUB. 13, S. S. 22  
 UTILITY CONTRACTORS INC. SEPT. 1966  
 PROJ. NO. C26-57 K-77 BOOKED 9-29-66



Scale 1" = 40'

LAT. 50, SUB. 4, S.S. NO. 23

LAT. 51, SUB. 4, S.S. NO. 23

CONSTRUCTION RECORD						SERVICE RECORD						
STATION	ELEVATION		Depth	MANHOLE	4-INCH "Y" BRANCHES		No. of Permit		House Number		DATE OF PERMITS	
	Ground	Grade			North West	South East	North West	South East	North West	South East	North West	South East
0+00	127.9	121.15	6.7	0+00 <sup>2</sup> Existg MH								
1+00	128.0	121.55	6.4									
	128.4	121.91	6.5	1+89 <sup>2</sup>								
2+00	128.4	121.95	6.4	MH tap			1515 E. 29 <sup>th</sup> St.		8-8-74		- See Page 34 for original Conn. in MH in 29 <sup>th</sup>	
3+00	129.0	122.35	6.6									
	128.5	122.65	5.8	3+70 <sup>2</sup>	Connected							
0+00	128.3	117.62	10.7	0+00 <sup>2</sup> Existg MH								
0+30		Beq. Project										
0+30		117.68										
1+00	125.5	117.82	7.7									
							0+91 <sup>2</sup>	013987		515 E. 29 <sup>th</sup> St. No.		5-7-69
							1+37 <sup>2</sup>					
	125.5	117.93 out	7.6									
		118.05 in	7.5	1+56 <sup>2</sup>								
2+00	125.4	118.21	7.2									
	125.4	118.26	7.1	2+13 <sup>2</sup>			TAP # 13553			431 E. 29 <sup>th</sup> St.	5-3-66	Gene Broder Pllg.
LAT. 25, SUB. 13,	5.5.22											
0+00	120.2	out 115.20	5.0	Existg 0+00								
		in 115.30	4.9									
	120.3	out 115.41	4.9	0+28 <sup>3</sup>								
		in 115.51	4.8				0+58.8	032549		2208 W. 13 <sup>th</sup>		5-31-72
							0+72 <sup>3</sup>					
1+00	120.6	115.80	4.8					03430		(near) 2200 W. 13 <sup>th</sup>	6-6-67	
	121.3	116.02	5.3	1+54 <sup>2</sup>	6" Sub NE. 9" Sub E			06448		2200 W. 13 <sup>th</sup>		10-5-66
					6" Sub N			02837		1420 N. Clarence	2-18-69	

98-9745-7 16878 2202 W 13th (Parcel Add 2200 W 13th - Davidhies pllg)  
 H" Sch 40 tied to service line for 2200 W 13th at approx 10' off Main - Septic Tank  
 Abandoned 1 twin CO 122 H 3.45 H 1 4" wye

L-4