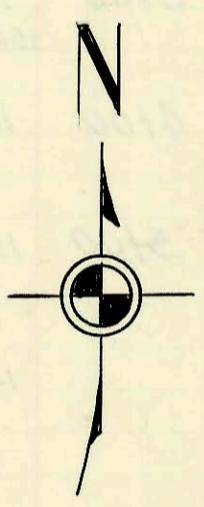
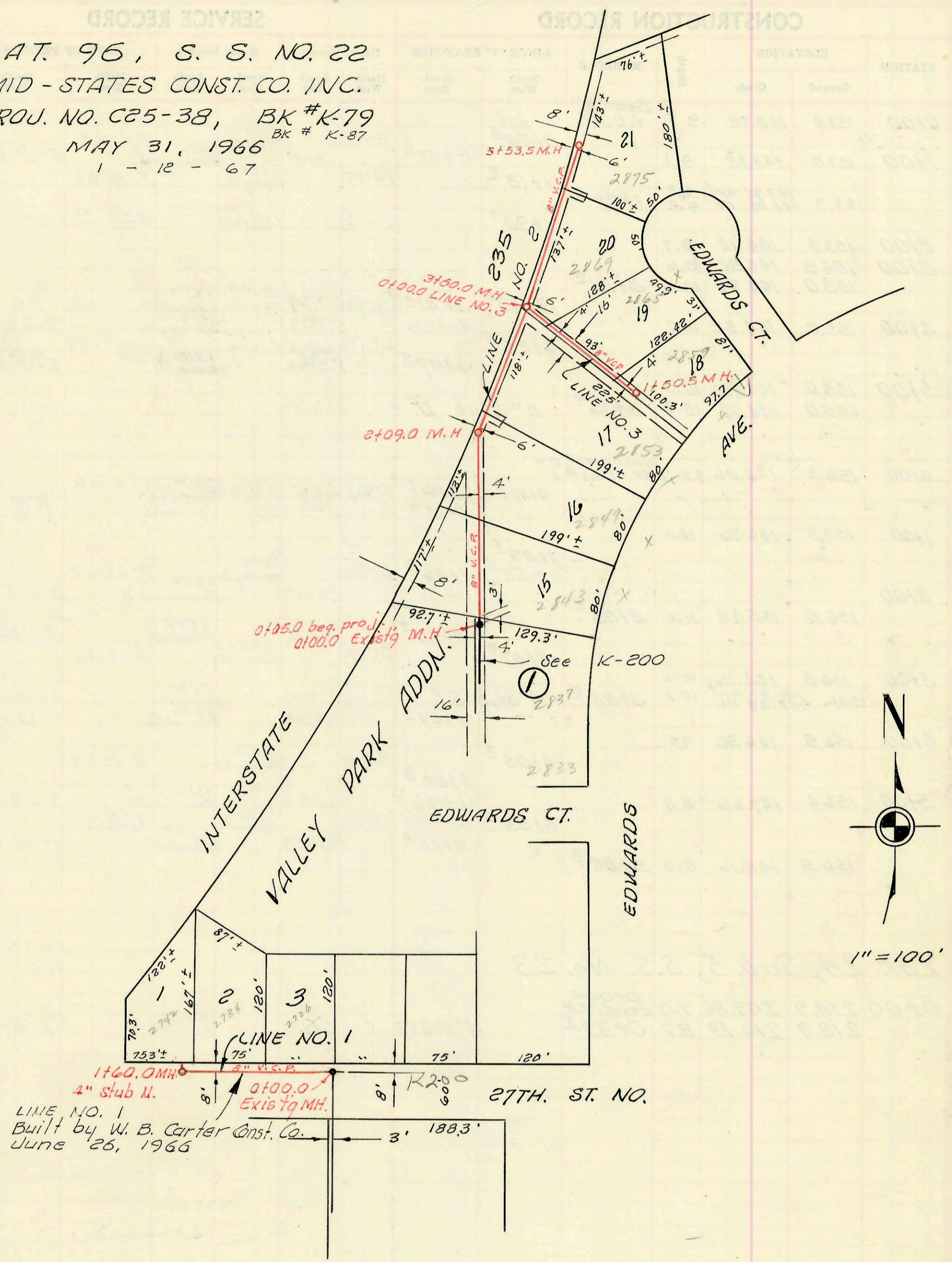


LAT. 96, S. S. NO. 22
 MID-STATES CONST. CO. INC.
 PROJ. NO. C25-38, BK #K-79
 MAY 31, 1966 BK # K-87
 1 - 12 - 67



1" = 100'

LINE NO. 1
 Built by W. B. Carter Const. Co.
 June 26, 1966

CONSTRUCTION RECORD

SERVICE RECORD

STATION	ELEVATION		Depth	MANHOLE	4-INCH "Y" BRANCHES		No. of Permit		House Number		DATE OF PERMITS	
	Ground	Grade			North West	South East	North West	South East	North West	South East	North West	South East
LINE NO. 1 0+00 0+05.0		123.02	5.4	0+00.0 EXIST'G M.H.								
		Beg. proj.										
1+00		123.52	5.9									
		123.82	6.3	1+60 [±]	0+19 [±] 0+92 [±] 1+42.6 4" stub N.		C2540 C37369 C40590		2726 W. 27th 2734 W. 27th 2742 W. 27th		4-4-67 2-22-73 8-14-73	
LINE NO. 2 0+00 0+05.0	129.2	124.39	4.8	0+00.0 EXIST'G M.H.								
	Beg. proj.											
1+00	129.7	124.59	5.1									
2+00	129.9	124.79	5.1									
	129.9	124.81 out 124.90 in	5.1 5.0	2+09 [±]	1+12 [±] 1+29 [±]		C1629 C1630		2843 N. Edwards 2849 N. Edwards		1-20-67 1-20-67	
3+00	130.4	125.26	5.1									
	131.0	125.49	5.5	3+60 [±]	2+47 [±]		C1631		2853 N. Edwards		1-20-67	
4+00 5+00	131.6	125.66	5.9									
	131.4	126.06	5.3		3+78 [±] 4+42 [±]		C7049		2869 N. Edwards		2-27-68	
	131.4	126.6	4.8	5+53 [±]	5+15 [±] 5+42 [±]		C19563		2875 N. Edwards		6-3-70	
LINE NO. 3 0+00	130.9	125.60	5.3	0+00.0 = 3+60.0 Line No. 2								
					0+28 [±] 0+79 [±]							
1+00	130.6	126.00	4.6									
	131.1	126.20	4.9	1+50 [±]	1+37 [±]		C2490		2859 N. Edwards		3-31-67	

C2540 - 2726 W. 27th N. - Justice Alley 4-4-67 top (0+45.6)
 C5491 - 2865 N. Edwards Court - 10-26-67 top - Gerald Thompson (0+71.0) Line 3

L-6