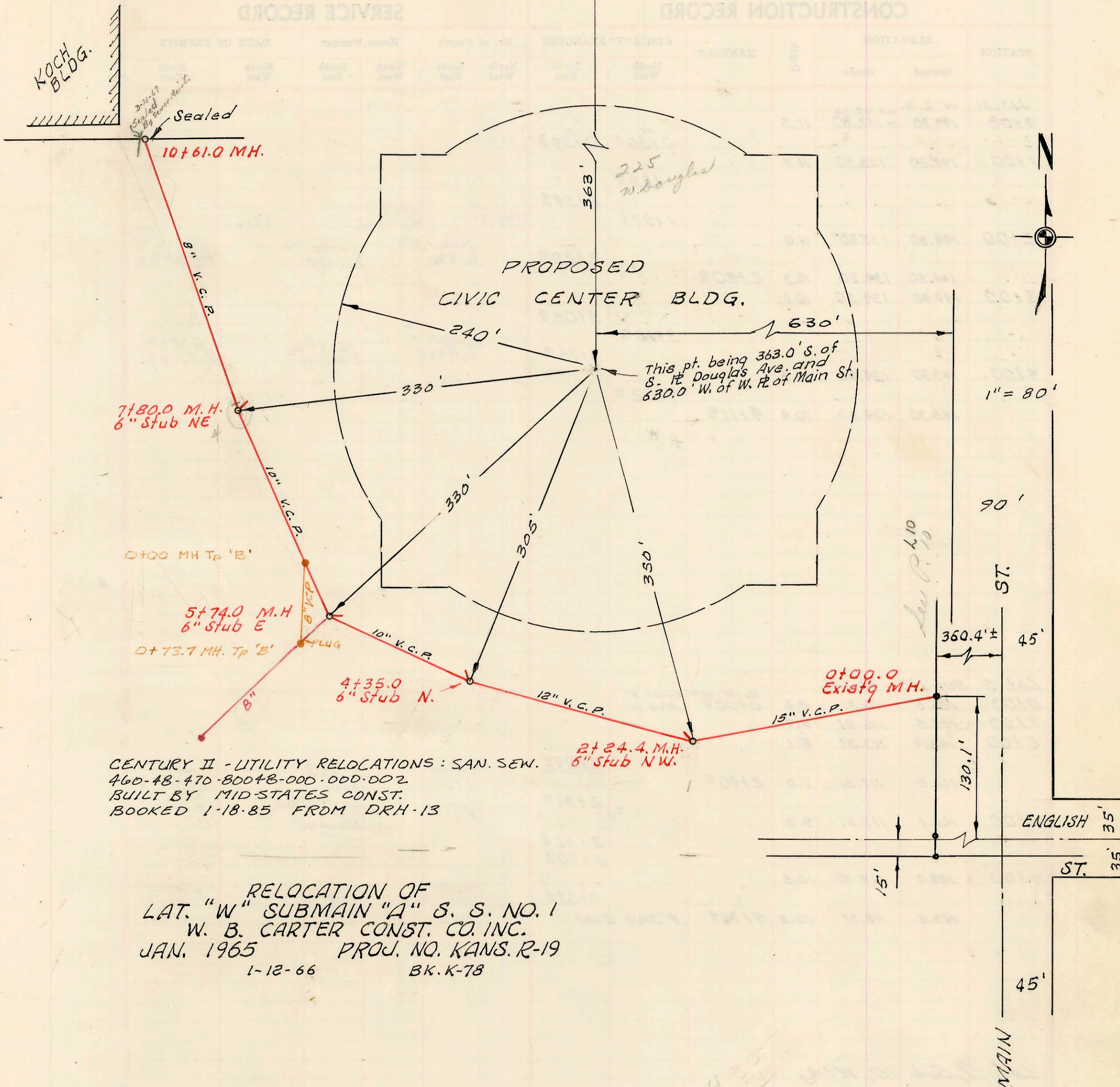


DOUGLAS AVE.

11A



CENTURY II - UTILITY RELOCATIONS: SAN. SEW.
 460-48-470-800+8-000-000-002
 BUILT BY MID-STATES CONST.
 BOOKED 1-18-85 FROM DRH-13

RELOCATION OF
 LAT. "W" SUBMAIN "A" S. S. NO. 1
 W. B. CARTER CONST. CO. INC.
 JAN. 1965 PROJ. NO. KANS. R-19
 1-12-66 BK. K-78

See P. 10

4 25

CONSTRUCTION RECORD						SERVICE RECORD						
STATION	ELEVATION		Depth	MANHOLE	4-INCH "Y" BRANCHES		No. of Permit		House Number		DATE OF PERMITS	
	Ground	Grade			North West	South East	North West	South East	North West	South East	North West	South East
0+00	111.3	104.06	7.2	Existg M.H.					225 W. Douglas		9-5-84	
1+00	110.0	104.21	5.8									
2+00	109.5	104.36	5.1									
	109.4	104.70 out 104.70 in	5.0 4.7	2+24 ⁴	6" stub N.W.		#3374		225 W. Douglas		6-2-67	Civil Center
3+00	110.0	104.93	5.1									
4+00	110.0	105.23	4.8									
	110.0	105.34 out 105.50 in	4.7 4.5	4+35 ²	6" stub N.		#3375		225 W. Douglas		6-2-67	Civil Center
5+00	109.7	105.75	4.0									
	110.4	106.03	4.4	5+74 ²			#3376		225 W. Douglas		6-2-67	Civil Center
6+00	110.6	106.13	4.5				#3372		403 W. Douglas		3-12-74	
7+00	110.0	106.52	4.5									
	110.9	106.82 out 107.00 in	4.1 3.9	7+80 ²	6" stub N.E.		#3377		225 W. Douglas		6-2-67	Civil Center
8+00	110.9	107.05	3.8									
9+00	112.8	107.25	5.5									
10+00	113.0	107.45	5.5									
	112.9	107.56	5.3	10+61 ²								

CENTURY II UTIL. RELOCATION.: SAN. SEWER

0+00	112.67	106.28 IN	6.4	0+00
	112.24	106.36 out 106.53 IN	5.9	0+73.7

* B5500 - 330 W. English - Leroy F. Sanderson 4-25-66 (near line S.W. from M.H. 5+74)