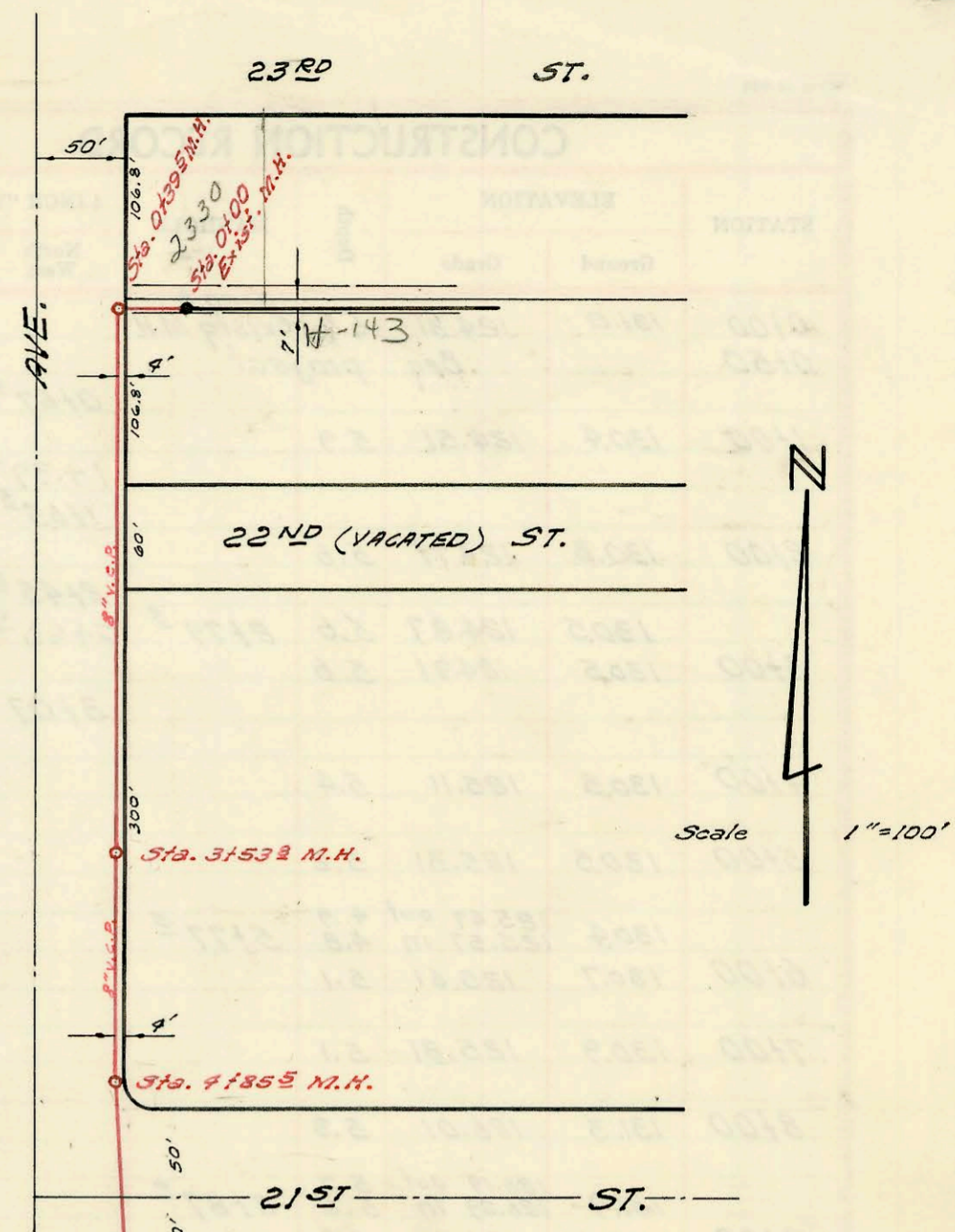


SERVICE RECORD
DATE OF ENTRY
METER NO.
METER SIZE
METER TYPE
METER LOCATION
METER ELEVATION
METER NOTES

Underground Utilities
Water Co. Control Cables.

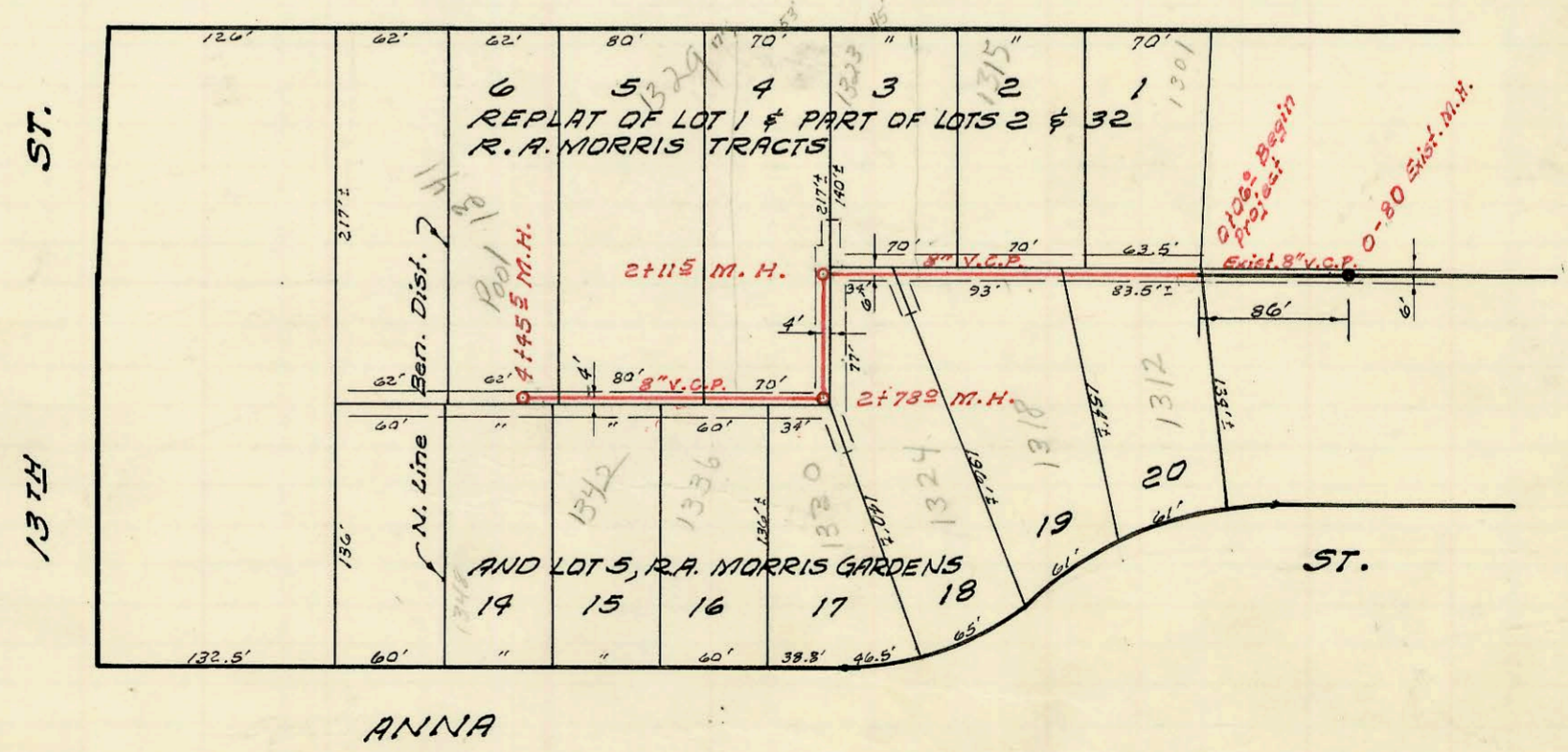


Scale 1"=100'

Private line from
MH 7101 to 6x6 collect
Box. This Box receives
flow from 1945 421st
A19 w 21st by gravity flow
and flows from
2030 N Amidon
by force line. can
Prop. Starbuck's can
connect to Box
upon receipt of
Priv. Form for
force line which crosses
new lot and adjacent
as to who owns & priv.
maintain Box & priv.
line per City Engineer
A water sewer
see Betty Price
to issue priv.
sewer permit
for 5/21/63

LATERAL 22, SAN. SEWER NO. 22
W. B. CARTER CONSTRUCTION CO. INC. 8-9-65
PRIVATE JOB BOOKED 9-13-65 K-72

Scale 1"=100'



LATERAL 169, SUB. 5, SAN. SEWER 22
MID-STATES CONSTRUCTION CO., INC. 8-30-65
PROJ. NO. C21-25 BOOKED 9-19-65 K-78

CONSTRUCTION RECORD						SERVICE RECORD						
STATION	ELEVATION		Depth	MANHOLE	4-INCH "Y" BRANCHES		No. of Permit		House Number		DATE OF PERMITS	
	Ground	Grade			North West	South East	North West	South East	North West	South East	North West	South East
Lat. 22, S.S. 22												
0+00	125.7	121.27	4.0	Exist								
	125.6	out 121.46 in 121.55	7.1 7.0	0+00								
1+00	126.7	121.87	4.8									
2+00	126.4	122.37	4.0									
3+00	126.5	122.87	3.6									
	126.9	122.98	3.9	3+53 [±]								
4+00	126.5	123.07	3.4			4+00 [±]						
	127.3	123.24	4.1	4+85 [±]								
5+00	128.0	123.27	4.7									
6+00	127.5	123.47	4.0									
7+00	127.0	123.67	3.3	7+01 [±]								
					6" stub East 6" tap in m.H.		C5708 lead #4508 B3929 B6085		1945W 21.0 7325 41.213 212.0 Amidon		11-10-67 8-18-67 8-5-65 7-29-66	
2001-01939- 8/31/01-2034 Amidon - (Arsons-Twin Lake Shop Ctr) - Roto - 4" SCH 40 Repair down by Amidon in parking lot. Cable was broken in bldg swr. Replace 10' of swr claytile w/ PVC pipe and 2 Fernco clamps. Pipe burst replacement 4" PE SDR17 from about 15' outside bldg to about 55' 17' inches 2 Fernco to inside bldg.												
Lat. 169, Sub. 5, S.S. 22												
0+00	130.8	123.93	7.4	Exist. 0-80								
					Begin Proj. 0+19 [±]							
					0+17 [±]		C54193	B4123	1312 W anna	1301 Baker	3-15-76	9-15-65
					0+82 [±]			C-3544		1315 Baker		6-15-67
1+00	130.0	123.81	6.2		1+09 [±]		C53495		1318 W anna		1-29-76	
					1+55 [±]							
					1+88 [±]			B5171		1323 Baker		3-1-66
2+00	131.8	124.21	7.6									
	132.2	out 124.26 in 124.36	7.9 7.8	2+11 [±]	Small Tap 2+65.4		C53496		1324 W anna		1-29-76	
	133.5	124.73	8.8	2+78 [±]	2+98 [±]		C64192		1330 W anna		3-15-76	
3+00	134.0	124.81	9.2		3+34 [±]							
					3+49 [±]		C52083		1336 N anna		10-23-75	
					3+88 [±]				1339 Baker			9-13-65
					3+88 [±]		C52082		1342 N anna		10-23-75	
4+00	137.3	125.21	12.1		4+39 [±]							
	137.1	125.37	11.7	4+45 [±]	4+37 [±]		C49695		1348 N anna		5-29-75	

C 7726 - 2030 Amidon (Theatre) - Danell Williams - 4-4-68 - (Run line conn. - 4" line S out of lift stat.)

21033 7-7-88 1919 W 21st No (The Ball) - Marc Todd - New conn. - (Run approx 140' of 4" ABS sch 40 from Catch Basin E. to prep. line. This is a Force Main. Did not conn to Bldg under this permit) Connected under # 21047, F.M. approx 20' from Bldg.

21047 7-11-88 1919 W 21st No. " " - Jess McCullough - Repair