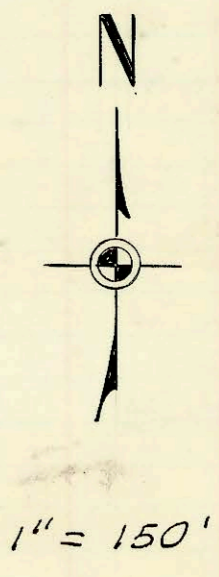
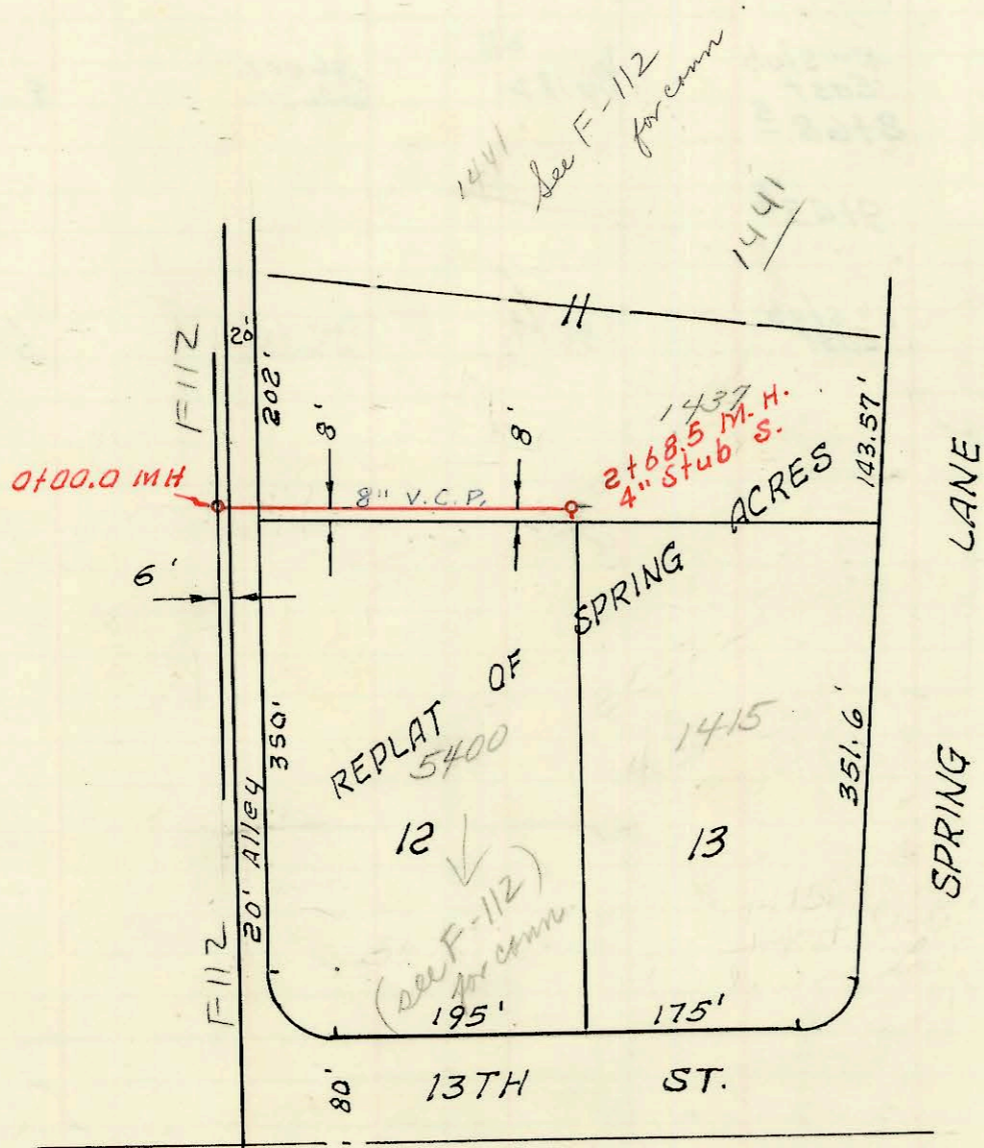


SERVICE RECORD				CONSTRUCTION RECORD			
DATE OF PERMIT		LINE NUMBER		NO. OF TANKS		ELEVATION	
Year	Month	Start	End	Start	End	Start	End
						8.0	15.0
						8.0	15.0
						8.5	15.5
						8.5	15.5
						8.5	15.5
						8.5	15.5
						8.5	15.5
						8.5	15.5
						8.5	15.5
						8.5	15.5
						8.5	15.5
						8.5	15.5
						8.5	15.5
						8.5	15.5
						8.5	15.5
						8.5	15.5
						8.5	15.5
						8.5	15.5
						8.5	15.5
						8.5	15.5
						8.5	15.5
						8.5	15.5
						8.5	15.5
						8.5	15.5
						8.5	15.5
						8.5	15.5
						8.5	15.5
						8.5	15.5
						8.5	15.5
						8.5	15.5
						8.5	15.5
						8.5	15.5
						8.5	15.5
						8.5	15.5
						8.5	15.5
						8.5	15.5
						8.5	15.5
						8.5	15.5
						8.5	15.5
						8.5	15.5
						8.5	15.5
						8.5	15.5
						8.5	15.5
						8.5	15.5
						8.5	15.5
						8.5	15.5
						8.5	15.5
						8.5	15.5
						8.5	15.5
						8.5	15.5
						8.5	15.5
						8.5	15.5
						8.5	15.5
						8.5	15.5
						8.5	15.5
						8.5	15.5
						8.5	15.5
						8.5	15.5
						8.5	15.5
						8.5	15.5
						8.5	15.5
						8.5	15.5
						8.5	15.5
						8.5	15.5
						8.5	15.5
						8.5	15.5
						8.5	15.5
						8.5	15.5
						8.5	15.5
						8.5	15.5
						8.5	15.5
						8.5	15.5
						8.5	15.5
						8.5	15.5
						8.5	15.5
						8.5	15.5
						8.5	15.5
						8.5	15.5
						8.5	15.5
						8.5	15.5
						8.5	15.5
						8.5	15.5
						8.5	15.5
						8.5	15.5
						8.5	15.5
						8.5	15.5
						8.5	15.5
						8.5	15.5
						8.5	15.5
						8.5	15.5
						8.5	15.5
						8.5	15.5
						8.5	15.5
						8.5	15.5
						8.5	15.5
						8.5	15.5
						8.5	15.5
						8.5	15.5
						8.5	15.5
						8.5	15.5
						8.5	15.5
						8.5	15.5
						8.5	15.5
						8.5	15.5
						8.5	15.5
						8.5	15.5
						8.5	15.5
						8.5	15.5
						8.5	15.5
						8.5	15.5
						8.5	15.5
						8.5	15.5
						8.5	15.5
						8.5	15.5
						8.5	15.5
						8.5	15.5
						8.5	15.5
						8.5	15.5
						8.5	15.5
						8.5	15.5
						8.5	15.5
						8.5	15.5
						8.5	15.5
						8.5	15.5
						8.5	15.5
						8.5	15.5
						8.5	15.5



EXTENSION TO
 LAT. 30, D.C.S., S.S. NO. 12
 MID-STATES CONST. CO.
 JAN. 13, 1966, BK NO. K-79

CONSTRUCTION RECORD

SERVICE RECORD

STATION	ELEVATION		Depth	MANHOLE	4-INCH "Y" BRANCHES		No. of Permit		House Number		DATE OF PERMITS	
	Ground	Grade			North West	South East	North West	South East	North West	South East	North West	South East
14+00	91.7	86.94	4.8			14+06 ^e		C3658		3840 S. Seneca (30)		6-22-67
	91.6	86.96	4.6	14+10 ³	X 14+28 ³	14+51 ^e		C3659		" trailer 31		6-22-67
					14+72 ¹	14+89 ³		C3660		" trailer 32		6-22-67
15+00	90.3	87.09	3.2		33 15+11 ¹	15+28 ¹		C8952		3840 S. Seneca		6-5-68
					32 15+37 ²	15+71 ⁸		C8951 C3661		" trailer 33		6-5-68 6-22-67
					34 15+50 ²			C8953		"		
					39 15+78 ⁶			C8958 C3662		" trailer 34		6-5-68 6-22-67
					35 15+88 ²			C8954		"		
16+00	90.5	87.24	3.3		36 16+24 ⁶	16+10 ⁵		C8959 C3663		" trailer 35		6-5-68 6-22-67
						16+49 ¹		C8955		" trailer 36		6-22-67
	90.6	87.37	3.2	16+89 ⁵	37 16+71 ³	16+73 ³		C8956 C3665		" trailer 37		6-22-67
						16+93 ^e		C3666		" trailer 38		6-22-67
17+00	90.7	87.39	3.3		38 17+10 ^e	17+32 ⁵		C8957		" trailer 39		6-22-67
					39 17+48 ⁷			C3667		" trailer 39		6-22-67
					40 17+91 ^e							
18+00	90.8	87.54	3.3		X 18+28 ^e	18+34 ⁴		C3668		" trailer 41		6-22-67
					41 18+67 ^e	18+73 ²		C8960		" trailer 41		6-22-67
					46 18+92 ⁶			C8965 C3669		" trailer 41		6-5-68 6-22-67
19+00	91.0	87.69	3.3		42 19+10 ^e	19+17 ⁸		C8961		" trailer 42		6-22-67
					47 19+38 ⁶			C8966 C3670		" trailer 42		6-22-67
					43 19+45 ⁴	19+57 ^e		C8962		" trailer 43		6-22-67
	91.0	87.80	3.2	19+70 ^e	44 19+88 ⁴	19+96 ¹		C8963		" trailer 44		6-22-67
20+00	91.0	87.84	3.2		45 20+27 ⁴	20+34 ⁴		C8964		" trailer 45		6-22-67
					44 20+66 ⁵	20+73 ⁴		C3673		" trailer 45		6-22-67
21+00	91.1	87.99	3.1		47 21+09 ³	21+16 ³		C3674		" trailer 46		6-22-67
					48 21+49 ^e	21+56 ³		C3675		" trailer 47		6-22-67
					49 21+88 ^e	21+95 ¹		C8967		" trailer 48		6-22-67
								C3676		" trailer 48		6-22-67
22+00	91.5	88.14	3.4		22+27 ⁴	22+34 ⁵		C8968		" trailer 48		6-22-67
	91.5	88.22	3.3	22+51 ⁵	4" stub NW	22+43 ⁵		C8979		3840 S. Seneca		6-12-68
					(22+51.5) m.H. top			B3931		see below		8-10-65
					(22+51.5) m.H. top S.W.			C9077		3840 S. Seneca		6-12-68
								C9078		3840 S. Seneca		6-12-68
0+00	213.4	202.20	11.2	New MH 0+00.0	4" SDR33 2" F55.0			93-24438-7		1437 (room Spring add)		9-15-93
1+00	213.1	203.20						93-24437-7		1437K		9-15-93
2+00	213.3	204.20			4" stub EAST			C33436		1437K		7-10-72
	213.2	204.90	8.3	2+68 ⁵	4" stub South			B5532		(top) 1437K		4-29-66

3820 S. Seneca
 2000-01200-511500-A-PLUS PLBG WEL SW- All lots connected. 4" Taps into 8" Clay tile private main. Used Predco Saddle on all but 2 lots & one bldg connection which were MH stubs

EXTENSION TO LAT. 30, D.C.S., S. S. NO. 12

* 94-19245-7 - 1129-44 - 3840 S. Seneca - sealed off 90' west of MH & 3' from main.

989325-7 5-4-98 3810 S. Seneca Liqueur store - Boardman