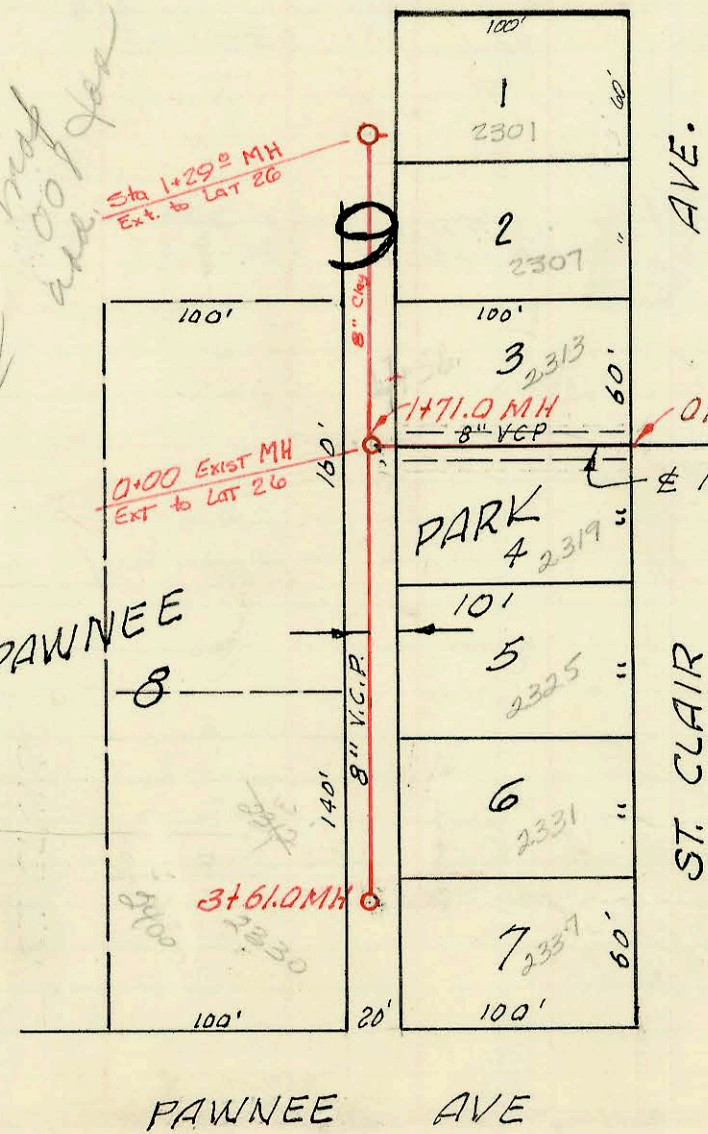


LAT. 187, SUB. 5, S. S. NO. 22
 W. B. CARTER CONST. CO. INC. NOV. 1965
 BK. NO. K-83, PROJECT NO. C25-9
 Nov. 16, 1965

Trailers:
 C-571 trailer top (8+70.4) Veris Sewer Service 10/26/66
 C-572 " " Tap (8+15) " " " " 10/26/66
 C-573 " " Tap (7+69.4) " " " " 10/26/66

Boundary Shift
 43' 4" Easement Beg. at WPL for
 Lots 1, 2, 3, 4
 of Amburgey Add
 See encl
 Boundary Shift.

T-23



EXTENSION TO
 LAT 26, SUB 3, SS# 22
 BUILT BY: ALLIED CONSTRUCTION
 Booked: March 8, 1971 from SS JK# 8
 Private Proj.

LAT. 26, SUB. 3, S. S. NO. 22
 W. B. CARTER CONST. CO. INC., NOV. 1965
 BK. NO. K-81 PROJECT NO. C28-83
 11-24-65

See map
 with
 100' easement

241
 171
 190

2308

2412

CONSTRUCTION RECORD

SERVICE RECORD

STATION	ELEVATION		Depth	MANHOLE	4-INCH "Y" BRANCHES		No. of Permit		House Number		DATE OF PERMITS	
	Ground	Grade			North West	South East	North West	South East	North West	South East	North West	South East
0+00	128.0	119.48	8.5	0+00 ² Existg M.H.	0+24 ⁰	0+43.5 ¹ TAP	17012	1255 10 C1020	1311 Smith	9-22-86		
	128.4	119.80 out 119.90 in	8.6 8.5	0+79 ⁵	0+20 ²	0+78 ⁴		23339 23340	1313 Smith		6-9-87 6-9-87	
1+00	128.5	119.98	8.5		0+95 ²	0+93 ²		92-30037	1319-21 Smith			
2+00	128.7	120.38	8.3		1+54 ²	1+52 ²						
					2+02 ⁵	2+00 ⁵		66457	1325 Smith		1-13-78	
					2+52 ²	2+50 ²						
3+00	128.6	120.78	7.8									
	128.6	120.82	7.8	3+10 ²	3+21 ²	3+19 ²		64795	1331 Smith		12-21-65	
4+00	128.6	121.18	7.4		4+14 ²	4+12 ²						
					4+16 ²	4+12 ²		075592 07539	1387 Smith		11-19-73 11-19-73	
5+00	130.0	121.58 out 121.75 out 121.85 in	8.4 8.2 8.1	5+43 ⁵	4" Stub N.E.		C19605 B5751	50012 13th St 50217 13th St	1387 Smith	6-8-70	4-11-78	
6+00	133.4	122.08	10.3		5+76 ²					6-2-66		
					6+28 ⁵	6+30 ⁵	25435	5023 W 13th		5-29-90		
7+00	136.6	122.48	14.1		7+01 ³	7+03 ³						
	135.8	122.64	13.2	7+40 ⁵	7+58 ²	7+60 ²	C17281	5031 W 13th St		12-12-69		
8+00	133.2	122.88	10.3		8+12 ²	8+14.5 ³						
					8+39 ⁵	8+41.5 ³	259829	5109 W 13th St		2-9-77		
					8+66 ⁵	8+68 ⁵	B4570	5111 W 13th St		10-10-65	11-18-65	
9+00	130.2	123.24	7.0	8+89 ²	9+59 ⁵	9+61 ⁵						
	130.3	123.28	7.0									
10+00	130.1	123.68	6.4		10+21 ²	4" Stub N.	C574	5112 W 13th St		10-26-66		
	130.4	123.76	6.6									
0+60	101.8	93.10	8.7	0+60 ² Req. 8" VCP	0+96 ²							
1+00	101.9	93.26 out 93.54 out 93.64 in	8.6 8.5 8.4	1+71 ² = OND M.H. EXT.	1+79 ²	1+81 ²						
2+00	102.1	93.76	8.3		2+72.4	2+38 ⁶						
					2+76 ²	2+97 ²						
3+00	101.7	94.16	7.5		3+32.5	3+54 ²						
	102.2	94.40	7.8	3+61 ²								
EXTENTION TO LAT 26, Sub 3, SS #22												
0+00	101.7	94.39	7.3	0+0 ² Exist MH	TAP 0+28		93 31267 C22693		2313 St St. Clair		12-20-93 1-26-71	
1+00	102.6	94.89	7.7		TAP 0+85		95 10737 C22692		2307 St St. Clair	11-13-84	1-26-71	
	103.1	95.04	8.1	MH 1+29 ²	4" Stub East		12542 C22691		2301 St St. Clair		7-10-75 7-26-71	

LAT. 26, SUB. 3, S.S. NO. 22

- B4571-5111 W. 13th - trailer - Venn Sewer Service 11-18-65 - Ben line down
- B4572 ✓
- B4573 ✓
- B4574 ✓
- B4575 ✓
- B4576 ✓
- B4577 ✓
- B4578 ✓
- B4579 ✓
- B4580 ✓
- B4581 ✓
- B4582 ✓
- B4583 ✓

V-23