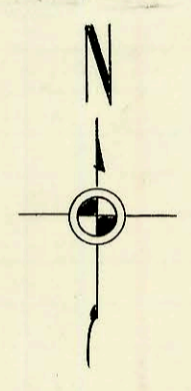
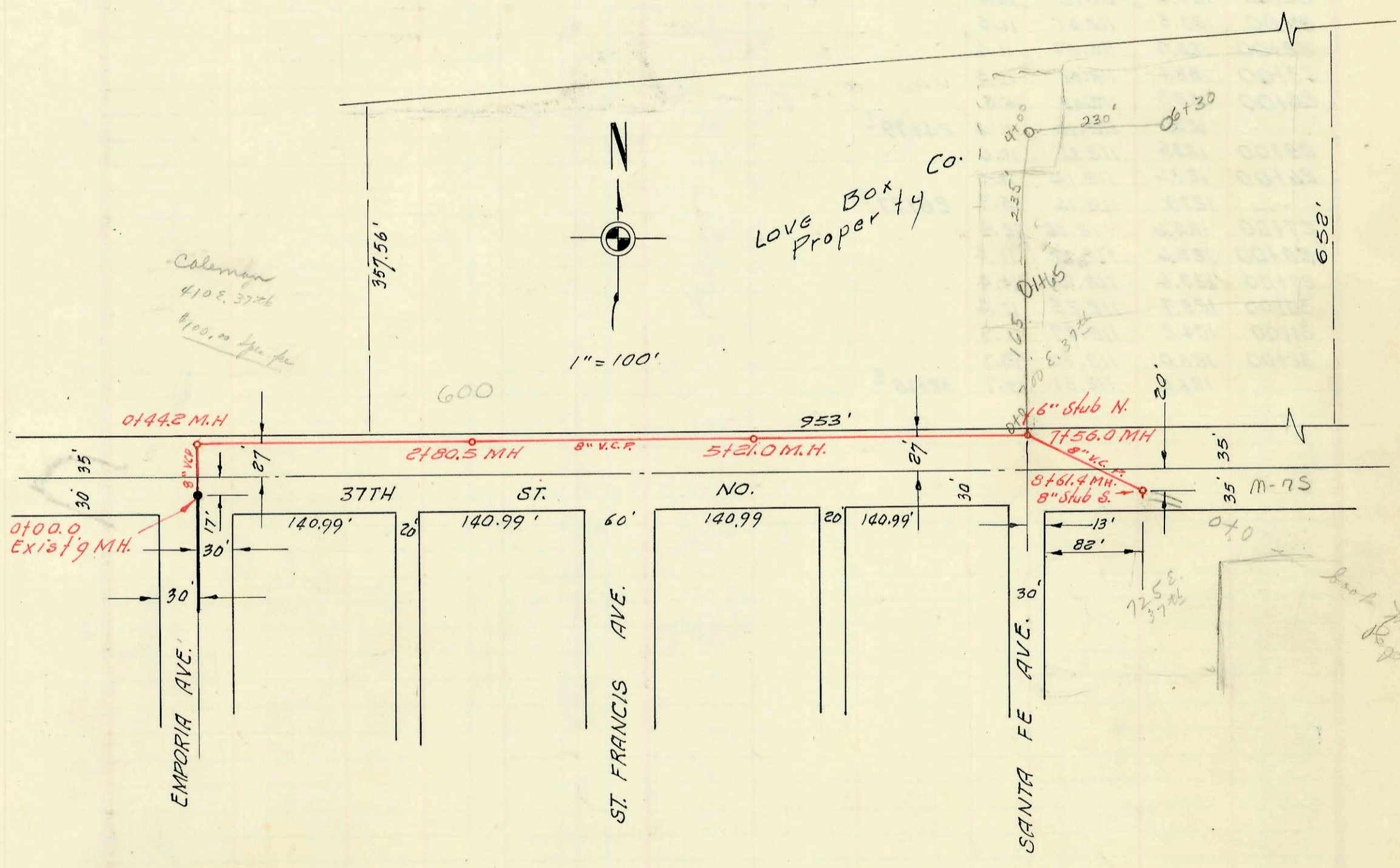


1" = 100'

LAT. 3, SUB. 1, GLENVILLE SEWER  
 W. B. CARTER CONST. CO. INC.  
 PROJ. NO. C26-68, BK. J. K NO. 2  
 3-16-67



1" = 100'

LAT. 63, SUB. 4, S. S. NO. 23  
 UTILITY CONT. INC.  
 PRIVATE CONTRACT. BK K-83-A  
 APRIL 17, 1967

| CONSTRUCTION RECORD |           |       |       |                    |                     | SERVICE RECORD      |               |            |                      |                     |                 |            |
|---------------------|-----------|-------|-------|--------------------|---------------------|---------------------|---------------|------------|----------------------|---------------------|-----------------|------------|
| STATION             | ELEVATION |       | Depth | MANHOLE            | 4-INCH "Y" BRANCHES |                     | No. of Permit |            | House Number         |                     | DATE OF PERMITS |            |
|                     | Ground    | Grade |       |                    | North West          | South East          | North West    | South East | North West           | South East          | North West      | South East |
| 0+00                | 88.0      | 83.55 | 4.4   | 0+00.0<br>New M.H. |                     |                     |               |            |                      |                     |                 |            |
| 1+00                | 88.6      | 83.75 | 4.8   |                    | 0+30 <sup>5</sup>   | 0+28 <sup>3</sup>   |               |            | 770 143<br>MacArthur | 520 W.<br>MacArthur | 6-11-84         |            |
|                     |           |       |       |                    | 1+31.9 <sup>9</sup> | 1+06.8 <sup>8</sup> | 11136         |            |                      |                     |                 | 8-1-74     |
|                     |           |       |       |                    | 1+08 <sup>9</sup>   | 7+06 <sup>8</sup>   |               | C46029     | 770 141<br>MacArthur |                     | 6-11-84         |            |
|                     |           |       |       |                    | 1+72.8 <sup>8</sup> | 1+90 <sup>8</sup>   | 11135         |            | 770 137<br>MacArthur |                     | 6-11-84         |            |
| 2+00                | 88.6      | 83.95 | 4.6   |                    | 2+21.9 <sup>8</sup> |                     | 11134         |            | 770 139<br>MacArthur |                     | 6-11-84         |            |
|                     | 88.7      | 84.08 | 4.6   | 2+62 <sup>9</sup>  | 2+68.9 <sup>8</sup> |                     | 11133         |            | 770 137<br>MacArthur |                     | 6-11-84         |            |
| 3+00                | 88.8      | 84.15 | 4.6   |                    | 3+00.9 <sup>8</sup> |                     | 11132         |            | 770 133<br>MacArthur |                     | 6-11-84         |            |
|                     |           |       |       |                    | 3+34 <sup>3</sup>   |                     |               |            |                      |                     |                 |            |
|                     |           |       |       |                    | 3+87 <sup>8</sup>   | 3+85 <sup>5</sup>   |               | C2824      | 600 W.<br>MacArthur  |                     |                 | 4-26-67    |
| 4+00                | 89.0      | 84.35 | 4.6   |                    | 4+00.4 <sup>8</sup> |                     | 11131         |            | 770 133<br>MacArthur |                     | 6-11-84         |            |
|                     | 89.2      | 84.51 | 4.7   | 4+80 <sup>8</sup>  | 8" stub W           |                     |               |            |                      |                     |                 |            |

LAT. 63, SUB. 4, S. S. NO. 23

|      |       |            |      |                      |                     |         |        |  |                    |  |         |  |
|------|-------|------------|------|----------------------|---------------------|---------|--------|--|--------------------|--|---------|--|
| 0+00 | 133.6 | 121.90     | 13.7 | 0+00.0<br>EXIST'G MH |                     |         |        |  |                    |  |         |  |
|      | 131.0 | 122.00 out | 9.0  | 0+44 <sup>8</sup>    |                     |         |        |  |                    |  |         |  |
| 1+00 | 130.8 | 122.20     | 8.6  |                      |                     |         |        |  |                    |  |         |  |
| 2+00 | 131.1 | 122.40     | 8.7  |                      |                     |         |        |  |                    |  |         |  |
|      | 131.2 | 122.56     | 8.6  | 2+80 <sup>5</sup>    | MH. tap             |         | C10993 |  | 600 E.<br>37th No. |  | 3/22/79 |  |
| 3+00 | 131.5 | 122.60     | 8.9  |                      |                     |         |        |  |                    |  |         |  |
| 4+00 | 131.0 | 122.80     | 8.2  |                      |                     |         |        |  |                    |  |         |  |
| 5+00 | 131.4 | 123.00     | 8.4  |                      |                     |         |        |  |                    |  |         |  |
|      | 131.4 | 123.04     | 8.4  | 5+21 <sup>8</sup>    |                     |         | C30227 |  | 700 E.<br>37th N   |  | 1-28-78 |  |
| 6+00 | 131.7 | 123.20     | 8.5  |                      | 5+37.0 <sup>8</sup> |         | 12922  |  | 700 E.<br>37th N   |  | 1-14-85 |  |
| 7+00 | 131.7 | 123.40     | 8.3  |                      | 5+99.5 <sup>8</sup> |         |        |  |                    |  |         |  |
|      | 134.0 | 123.51 out | 10.5 | 7+56 <sup>8</sup>    | 6" stub N.          | MH. tap | C2742  |  | 700 E.<br>37th N   |  | 4-18-67 |  |
| 8+00 | 134.0 | 123.70     | 10.3 |                      |                     |         |        |  |                    |  |         |  |
|      | 133.3 | 123.82     | 9.5  | 8+61 <sup>4</sup>    | 8" stub so.         |         | C2743  |  | 725 E.<br>37th N   |  | 4-18-67 |  |

C18177- 700 E 37th No. - Gray Bros - top into private MH 1+70 3-2-70 ok  
 C16322- 700 E 37th No. - Gray Bros - top into private MH 1+70 10-16-69 Top into MH 7+56 8+00  
 29- C39278 - 410 E. 37th North - Everett Harrison (MH top, 0+44.2) 100' lateral for pl. 5-30-73 - An. #167618  
 4" Top into private MH. C35941- 700 E 37th No. - 11/10/72 - Sean Norris  
 (L+30) (Lane Rec Co)