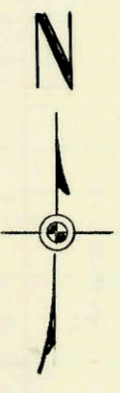
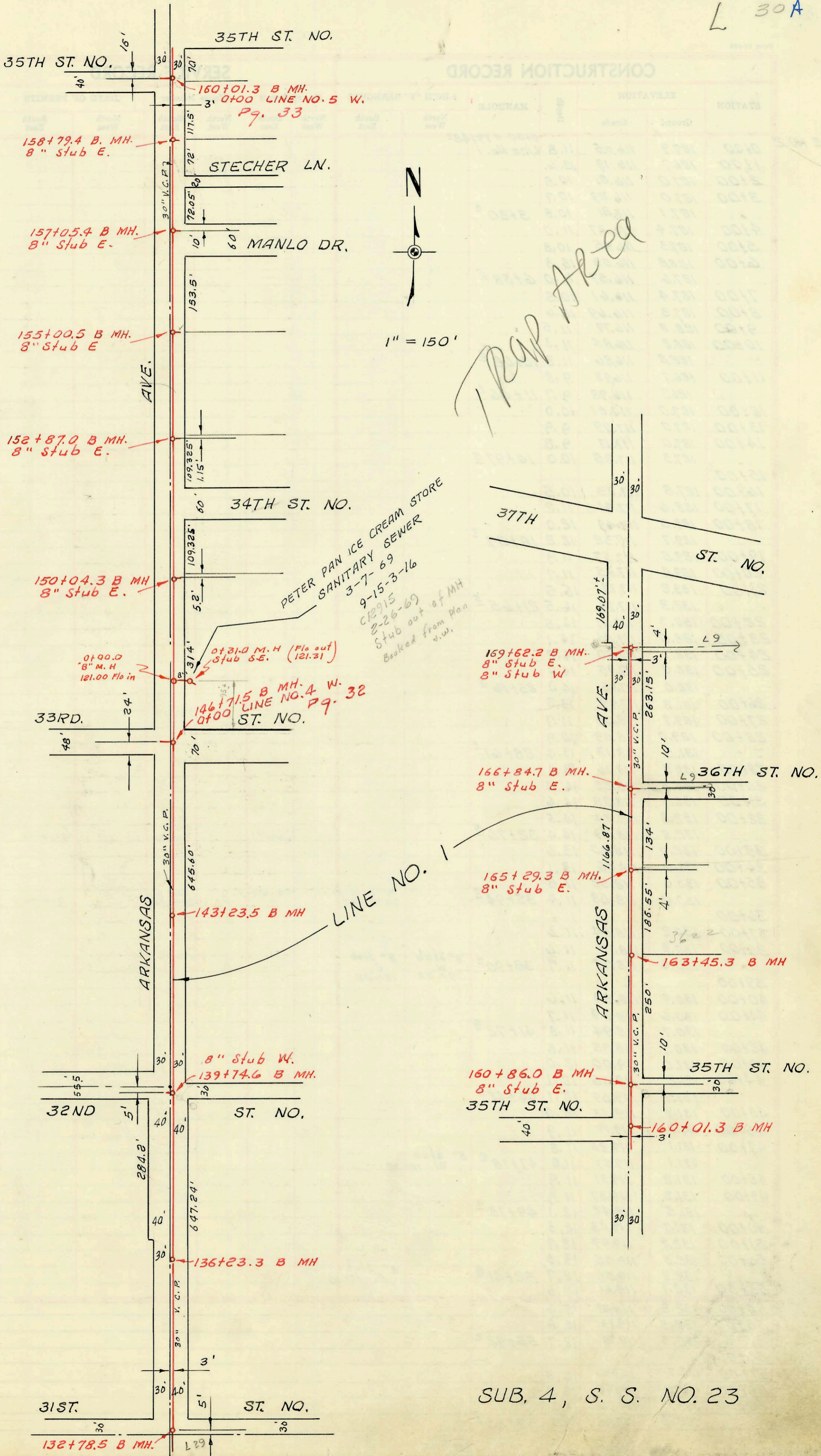


CONSTRUCTION RECORD



1" = 150'

Trap Area

CONSTRUCTION RECORD

SERVICE RECORD

STATION	ELEVATION		Depth	MANHOLE	4-INCH "Y" BRANCHES		No. of Permit		House Number		DATE OF PERMITS	
	Ground	Grade			North West	South East	North West	South East	North West	South East	North West	South East
133+00		118.50	14.5	132+78 <sup>5</sup>								
134+00		118.51	14.3									
135+00		118.56	14.0									
136+00		118.61	13.6									
		118.65	13.4									
		118.56	13.2	136+23 <sup>3</sup>								
137+00		118.70	13.0									
138+00		118.74	12.0									
139+00		118.79	12.2									
		118.82	11.8	139+74 <sup>6</sup>								
140+00		118.83	11.5									
141+00		118.88	11.3									
142+00		118.92	11.4									
143+00		118.97	11.1									
		118.98	11.2	143+23 <sup>5</sup>								
144+00		119.01	11.2									
145+00		119.06	11.0									
146+00		119.10	10.9									
		119.13	10.8	146+71 <sup>5</sup>								
147+00		119.15	10.8									
148+00		119.19	10.7									
149+00		119.24	10.6									
150+00		119.28	10.5									
		119.28	10.5	150+04 <sup>3</sup>								
151+00		119.33	10.3									
152+00		119.37	10.2									
		119.41	10.2	152+87 <sup>2</sup>								
153+00		119.42	10.1									
154+00		119.46	10.0									
155+00		119.50	9.9	155+00 <sup>5</sup>								
156+00		119.55	9.9									
157+00		119.60	10.0	157+05 <sup>4</sup>								
158+00		119.63	10.0									
		119.68	10.1	158+79 <sup>4</sup>								
159+00		119.69	10.0									
160+00		119.73	10.0	160+01 <sup>3</sup>								
		119.77	10.0	160+86 <sup>2</sup>								
161+00		119.78	10.1									
162+00		119.82	10.0									
163+00		119.87	10.0									
		119.88	10.0	163+45 <sup>3</sup>								
164+00		119.90	10.1									
165+00		119.96	10.0									
		119.97	10.1	165+29 <sup>3</sup>								
166+00		119.97	10.0									
		120.05	10.0	166+84 <sup>2</sup>								
167+00		120.07	10.0									
168+00		120.09	10.1									
169+00		120.14	10.1									
		120.16	10.2	169+62 <sup>2</sup>								

LINE NO. 1  
Continued

10.5  
10-14.5

8" Stub W.  
120.35

8" stub  
E. 120.82

8" stub  
E. 120.94

8" stub  
E. 121.03

8" stub  
E. 121.12

8" stub  
E. 121.20

8" stub  
E. 121.30

8" stub  
E. 121.49

8" stub  
E. 121.57

8" stub  
W. 121.76  
8" stub  
E. 121.86

C12915-3404 N. Arkansas (Peter Van Store) Stub E. out of 0+31 M.H. 2-26-69