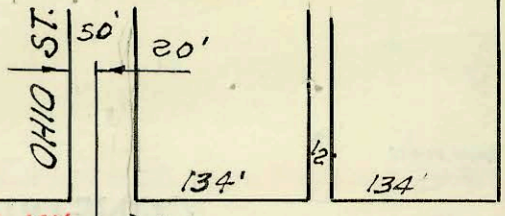


33RD ST. NO.



26+58.4 B MH.

0+00.0 Line No. 8 W. Pg. 35.

28+28.0 B MH 8" stub N.

HYDRAULIC AVE.

Proposed INTERSTATE

ROCK ISLAND

35-W 353.2' OF 12" CONC. ENC'MT.

16+44.5 B MH.

185' of tunnel.

22' of 8" R.C. Enc'mt.

14+28.8 B MH.

1450' MH TYPE 'A' 12" STUB SW

LOT 2 WISE 2ND ADD SAN SEWER BUILT BY: PROJ. NO. DBKW 706065 BOOKED 2/13/78 FROM 150 HGS

1545 85' R/W

10+55.7 B MH.

24" V.C.P.

LINE NO. 6

ST. NO.

7+05.3 B MH. 8"-15' Stub N.

29TH

Wise Add LOT 1

Wise 2nd LOT 2

WASHINGTON

LINE NO. 7

30" V.C.P.

30' East Mt

No fee in lieu of lateral connection due for laterals to 8" laterals per e-mail from Perkins who has permission from sewer dept. name: [unclear]

11+40.6 B MH. 8"-35' Stub W. 8"-35' Stub E.-MH

15+20.5 B MH 8"-35' Stub W. 8"-35' Stub E.-MH

7+61.5 B MH. 8"-35' Stub W. 8"-35' Stub E.-MH

No MH tap without permission from sewer dept. If tap req'd. there will be in lieu of laterals or center can [unclear]

3+54.5 B MH. 8"-15' Stub N.

0+00.0 LINE NO. 6 = 59+70.5 LINE NO. 7 Pg. 28.

OHIO AVE.

3051 Job trailer Temp. cont. 660'

3+80.0 B MH. 8"-35' Stub W. 8"-35' Stub E.-MH

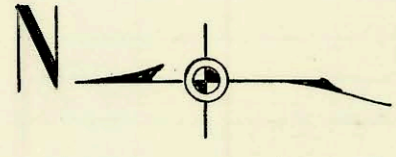
0+00.0 Line No 7 = 59+70.5 Line No. 1 Pg. 28.

Require Lateral Extension SUB 4, S. S. NO. 23

29TH

ST. NO.

OHIO



### CONSTRUCTION RECORD

### SERVICE RECORD

LINE NO. 6

10  
25-12.5

LINE NO. 7

11.5  
10.5-9.2

LOT 2 WISE 2ND ADDN SAN SEWER

STATION	ELEVATION		Depth	MANHOLE	4-INCH "Y" BRANCHES		No. of Permit		House Number		DATE OF PERMITS	
	Ground	Grade			North West	South East	North West	South East	North West	South East	North West	South East
0+00	127.6	115.54	12.1	0+00 = 59+70 <sup>5</sup> Line No. 1								
1+00	126.7	115.82	10.9									
2+00	126.7	116.10	10.6									
3+00	126.2	116.38	9.8									
	126.2	116.52	9.7	3+54 <sup>5</sup>	8" - 15' Stub N 117.86							
4+00	125.4	116.66	8.7									
5+00	125.8	116.94	8.9									
6+00	125.8	117.22	8.6									
7+00	126.6	117.50	9.1	7+05 <sup>3</sup>	8" - 15' Stub N 118.83	M.H. Jap	"5449	1515 E 29 <sup>th</sup>			4-14-66	
8+00	127.7	117.78	9.9									
9+00	128.1	118.06	10.0									
10+00	128.2	118.34	9.9									
	128.2	118.48	9.7	10+55 <sup>7</sup>								
11+00	128.0	118.62	9.4									
12+00	128.4	118.90	9.5									
13+00	128.0	119.18	8.8									
14+00	130.3	119.46	10.8									
	130.3	119.53	10.8	14+28 <sup>8</sup>								
15+00												
16+00		120.13	11.0	16+44 <sup>5</sup>								
17+00		120.30	12.4									
18+00		120.58	12.5									
19+00	132.5	120.86	11.6									
	132.7	121.10	11.6	19+89 <sup>2</sup>								
0+00	127.5	115.04	12.5	0+00 = 59+70 <sup>5</sup> Line No. 1								
1+00	126.8	115.18	11.6									
2+00	127.0	115.32	11.7									
3+00	127.2	115.46	11.7									
	127.5	115.57	11.9	3+80 <sup>2</sup>	8" - 35' Stub W. 117.40	8" - 35' Stub E.M.H.	95-51087 2003 01931 17570	3040 Ohio	3030 W Ohio	509 Below	7-24-03	4-26-95 1-5-87
4+00	127.6	115.60	12.0									
5+00	127.4	115.74	11.7									
6+00	127.4	115.88	11.5									
7+00	128.0	116.02	12.0									
	128.2	116.10	12.1	7+61 <sup>5</sup>	8" - 35' Stub W. 117.93	8" - 35' Stub E.M.H.						
8+00	128.2	116.16	12.0									
9+00	127.9	116.30	11.6									
10+00	127.7	116.44	11.3									
11+00	127.3	116.58	10.7									
	127.4	116.64	10.8	11+40 <sup>6</sup>	8" - 35' Stub W. 118.47	8" - 35' Stub E.M.H.						
12+00	127.6	116.72	10.9									
13+00	130.0	116.86	13.1									
14+00	128.3	117.00	11.3									
15+00	128.4	117.14	11.3									
	128.4	117.17	11.2	15+20 <sup>5</sup>	8" - 35' Stub W. 119.00	8" - 35' Stub E.M.H.						
16+00	128.4	117.28	11.1									
17+00	128.3	117.42	10.9									
18+00	128.3	117.56	10.7									
19+00	128.8	117.70	11.1	19+00 <sup>6</sup>	8" - 35' Stub W. 119.53	8" - 35' Stub E.M.H.						
20+00	129.0	117.84	11.2									
21+00	129.2	117.98	11.2									
22+00	129.3	118.12	11.2									
	129.4	118.23	11.2	22+79 <sup>3</sup>	8" - 35' Stub W. 120.06	8" - 35' Stub E.M.H.						
23+00	129.4	118.26	11.1									
24+00	129.4	118.40	11.0									
25+00	129.3	118.54	10.8									
26+00	129.2	118.67	10.5									
	129.4	118.77	10.6	26+58 <sup>4</sup>								
27+00	129.8	118.83	11.0									
28+00	129.8	118.99	10.8									
	129.9	119.01	10.9	28+28 <sup>8</sup>	8" Stub N. 120.83							
0+00	131.1	120.87	10.2	0+00 EXISTING								
1+00	128.8	122.03	6.8									
	129.0	122.60	6.4	1+50.1	4" STUB SW		C63856	1545 E 29 <sup>th</sup>			11-3-77	

95-51087 4-26-03 3030 N Ohio - add 1 connection into existing old sewer at clean out 4" Nc40

SWR 2002-02437 9/4/02 3051 N Ohio (temp. conn. for Job trailer GRI 135) Mies CONST.