

1" = 100'

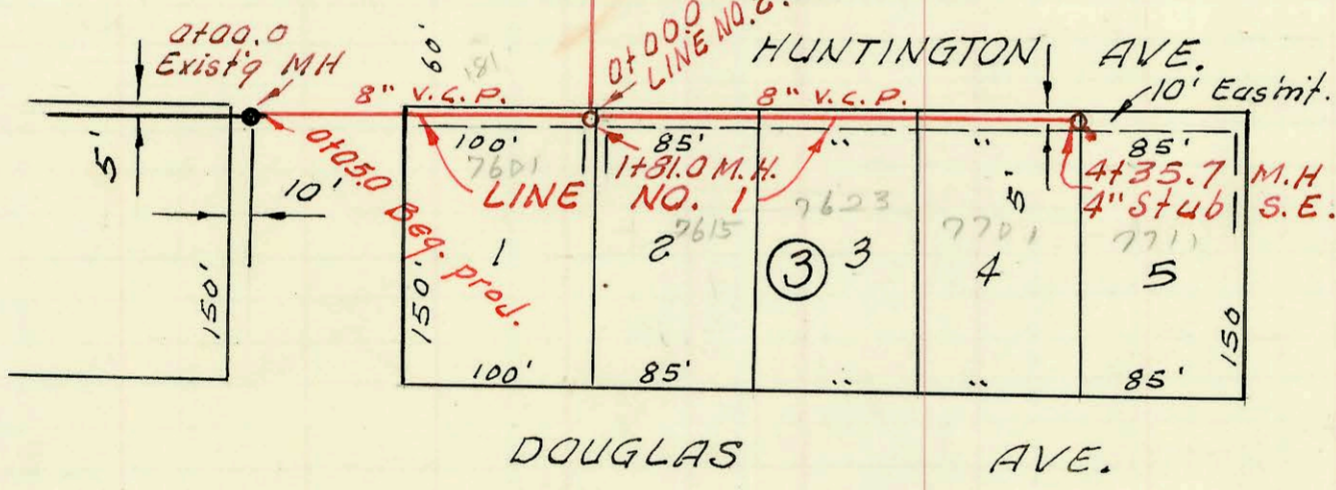
ADDITION

LAT. 29, SUB. 5-A, W. I. S.
 MID-STATES CONST. CO. INC., FEB. 1966
 BK. K-84, PROD. NO. C25-39
 3 - 1 - 66

ROCKWOOD

POSTOAK

PENROSE



DOUGLAS AVE.

AVE.

CONSTRUCTION RECORD

SERVICE RECORD

STATION	ELEVATION		Depth	MANHOLE	4-INCH "Y" BRANCHES		No. of Permit		House Number		DATE OF PERMITS	
	Ground	Grade			North West	South East	North West	South East	North West	South East	North West	South East
LINE #1	0+00	170.2	160.38	9.8	0+00.0 EXIST'G M.H.							
	0+05	169.7	160.58	9.1	Beq. Project							
	1+00	170.1	160.74	9.4	1+81°	1+03°						
	2+00	170.4	160.82	9.6		1+74°	Top C415		7601 Huntington		8-21-67	
						2+02°	#C11933		7615 Huntington		12-11-68	
						2+90°	#5673		7633 Huntington		11-9-67	
	3+00	170.2	161.22	9.0		3+75°						
	4+00	170.4	161.62	8.8		4+11°	C22088		7701 Huntington		12-8-70	
		170.4	161.76	8.6	4+35°	4" stub SE	#6807		7711 Huntington		2-8-68	
LINE #2	0+00	170.1	160.84	9.3	0+00.0 = 1+81.0 line #1	85°						
	1+00	170.3	161.04	9.3		0+83°	#5166	B5867	104 Postack	101 Pennac	3-1-66	6-22-66
	2+00	170.5	161.24	9.3		1+89°	#2510	B6142	110 Postack	109 Pennac	4-3-67	8-8-66
		170.5	161.26	9.2	2+12°							
						2+90°	#35162		116 Postack	117 Pennac	3-1-66	4-24-67
	3+00	171.3	161.44	8.9		3+56°	#16007					
						3+74°	B5763	C6514	124 R Postack	125 Pennac	3-7-66	1-22-68
	4+00	170.5	161.64	8.9		4+32°	#5417		133 Postack		6-3-66	10-23-67
		170.6	161.67	8.9	4+15°							
	5+00	170.8	161.84	9.0		5+13°	#3856		141 N Pennac		7/10/67	
		170.5	161.98	8.5	5+69°							
						5+83°	#5866		200 Postack		6-22-66	
						5+94°	#3552		201 Pennac		6-15-67	
	6+00	170.5	162.04	8.5		6+70°	B5210		206 Postack		3-8-66	
						6+72°	#8435		209 Pennac		5-23-68	
	7+00	170.6	162.24	8.4		7+64°	#3164	C4141	212 Postack	217 Pennac	5-18-67	7-27-67
		170.7	162.34	8.4	7+51°							
	8+00	170.7	162.54	8.2		8+43°	B5261	C3237	214 Postack	225 Pennac	3-17-66	5-23-67
	9+00	170.8	162.94	7.9		9+27°	C3621		233 Pennac		6-21-67	
		171.1	163.10	8.0	9+41°		#5742		220 Postack		6-1-66	