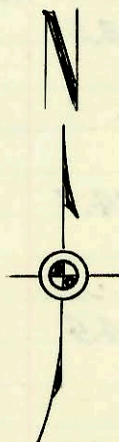
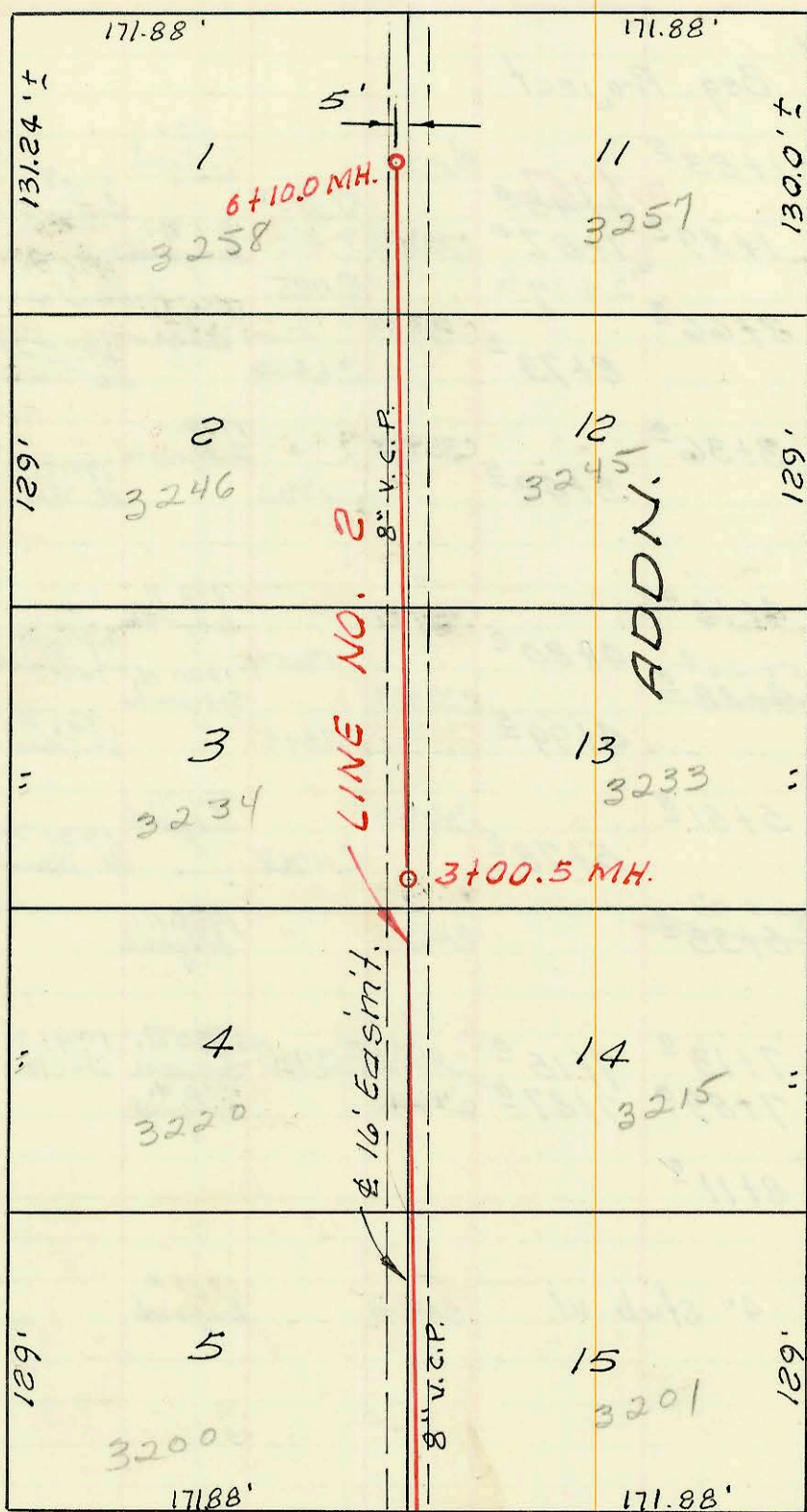


CONSTRUCTION RECORD

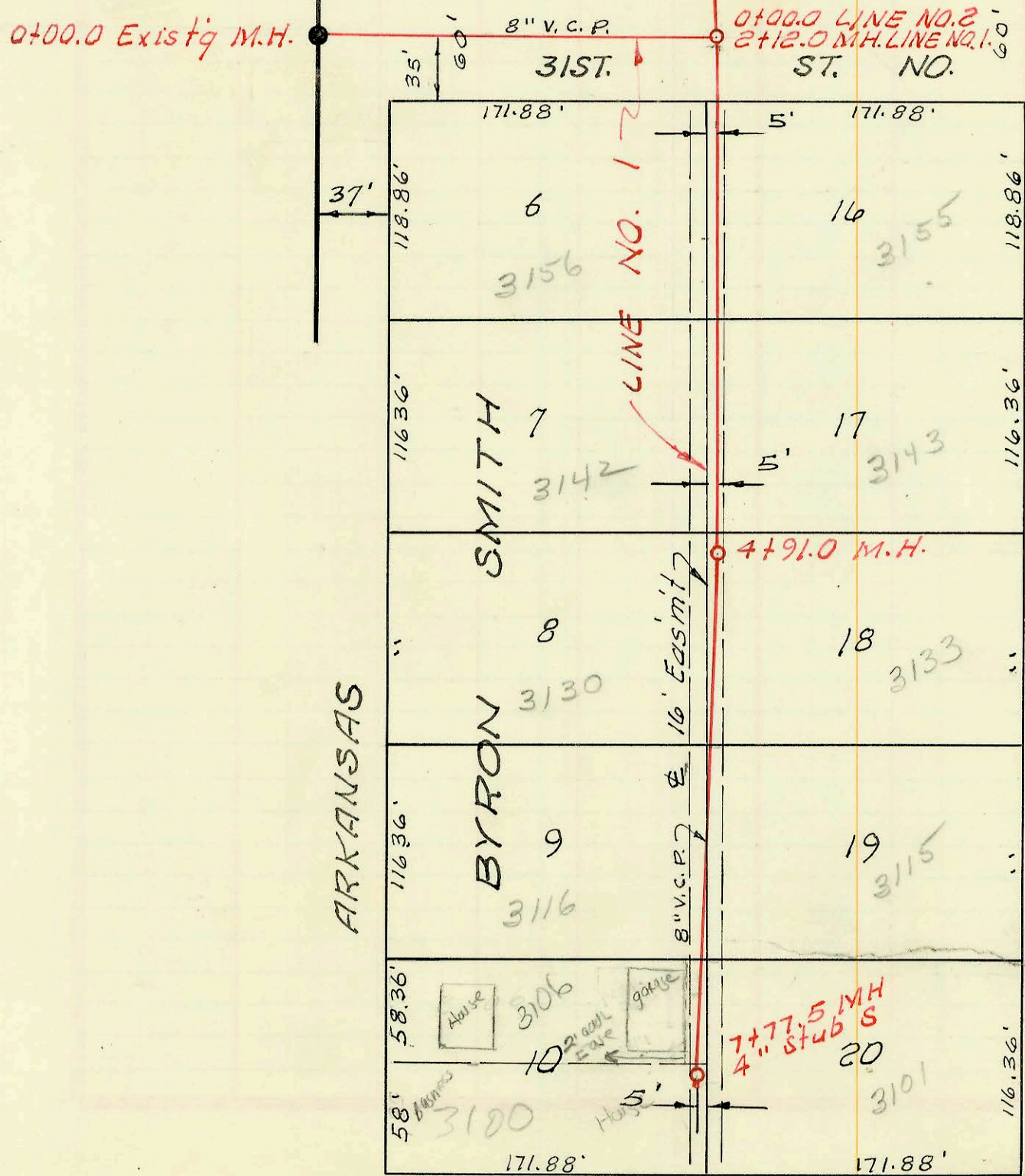
DATE OF PERMIT: PROJECT NO. 23-79, BK. K-87

32ND ST. NO.



1" = 80'

LAT. 27, SUB. 4, S.S. NO. 23  
MID-STATES CONST. CO. INC.  
PROJ. NO. C23-79, BK. K-87  
3-23-66



30TH ST. NO.

CONSTRUCTION RECORD

SERVICE RECORD

STATION	ELEVATION		Depth	MANHOLE	4-INCH "Y" BRANCHES		No. of Permit		House Number		DATE OF PERMITS	
	Ground	Grade			North West	South East	North West	South East	North West	South East	North West	South East
LINE #1 0+00	132.9	120.03	12.9	0+00 <sup>o</sup> EXIST'G MH								
1+00	129.6	120.23	9.4									
2+00	128.9	120.43	8.5									
	128.9	120.45 out	8.4									
	128.9	120.55 in	8.3	2+12 <sup>o</sup>								
3+00	128.5	120.90	7.6									
					3+23 <sup>o</sup>	3+25 <sup>o</sup>	C31790	C31207	3156 N Arkansas	3155 Jackson	3-3-72	3-27-72
4+00	129.5	121.30	8.2									
					4+22 <sup>o</sup>	4+24 <sup>o</sup>	C20326	B5642	3142 N Arkansas	3143 Jackson	8-3-70	5-16-66
	130.6	121.66	8.9	4+91 <sup>o</sup>								
5+00	130.6	121.70	8.9									
					5+40 <sup>o</sup>	5+38 <sup>o</sup>	C16374	B5341	3130 Arkansas	3133 Jackson	10-20-66	3-28-66
6+00	131.7	122.10	9.6									
					6+44 <sup>o</sup>	6+24 <sup>o</sup>		C18471		3115 Jackson		3-23-70
								C11377	3116 N. Arkansas		11-12-68	
7+00	132.8	122.50	10.3									
					7+33 <sup>o</sup>	7+59 <sup>o</sup>		B6299	3106 N. Arkansas	3101 Jackson	6-4-67	9-7-66
	134.5	122.80	11.7	7+77 <sup>o</sup>	4" Stub S.		C8882	B636	3100 N Arkansas		3-31-68	
LINE #2 0+00	128.9	120.56	8.3	0+00 <sup>o</sup> = 2+12 <sup>o</sup> Line #1								
1+00	128.3	120.96	7.3									
2+00	128.3	121.56	6.7									
					0+84 <sup>o</sup>	0+82 <sup>o</sup>	C32398	B8457	3200 N. Arkansas	3201 Jackson	5-22-72	5-27-68
					2+15 <sup>o</sup>	2+22 <sup>o</sup>		B5420	3220 Arkansas		4-11-66	
					2+93 <sup>o</sup>			B3468	3215 Jackson		6-8-67	
3+00								C41027	3234 Arkansas		9-4-73	
	128.0	121.96	6.0	3+00 <sup>o</sup>								
4+00	128.1	122.16	5.9									
					3+50 <sup>o</sup>			C5810		3233 Jackson		11-20-67
					4+35 <sup>o</sup>	4+72 <sup>o</sup>		B3342	3246 Arkansas		3-28-66	
								B6071	3245 Jackson		7-27-66	
5+00	128.0	122.56	5.4									
					5+70 <sup>o</sup>	5+68 <sup>o</sup>	22465	C2111	3258 Arkansas	3257 Jackson	1-24-69	3-2-67
6+00	128.0	122.96	5.0									
	127.9	123.00	4.9	6+10 <sup>o</sup>								

9970917-7 6-27-97 3106 N. Arkansas - McClung's INC -