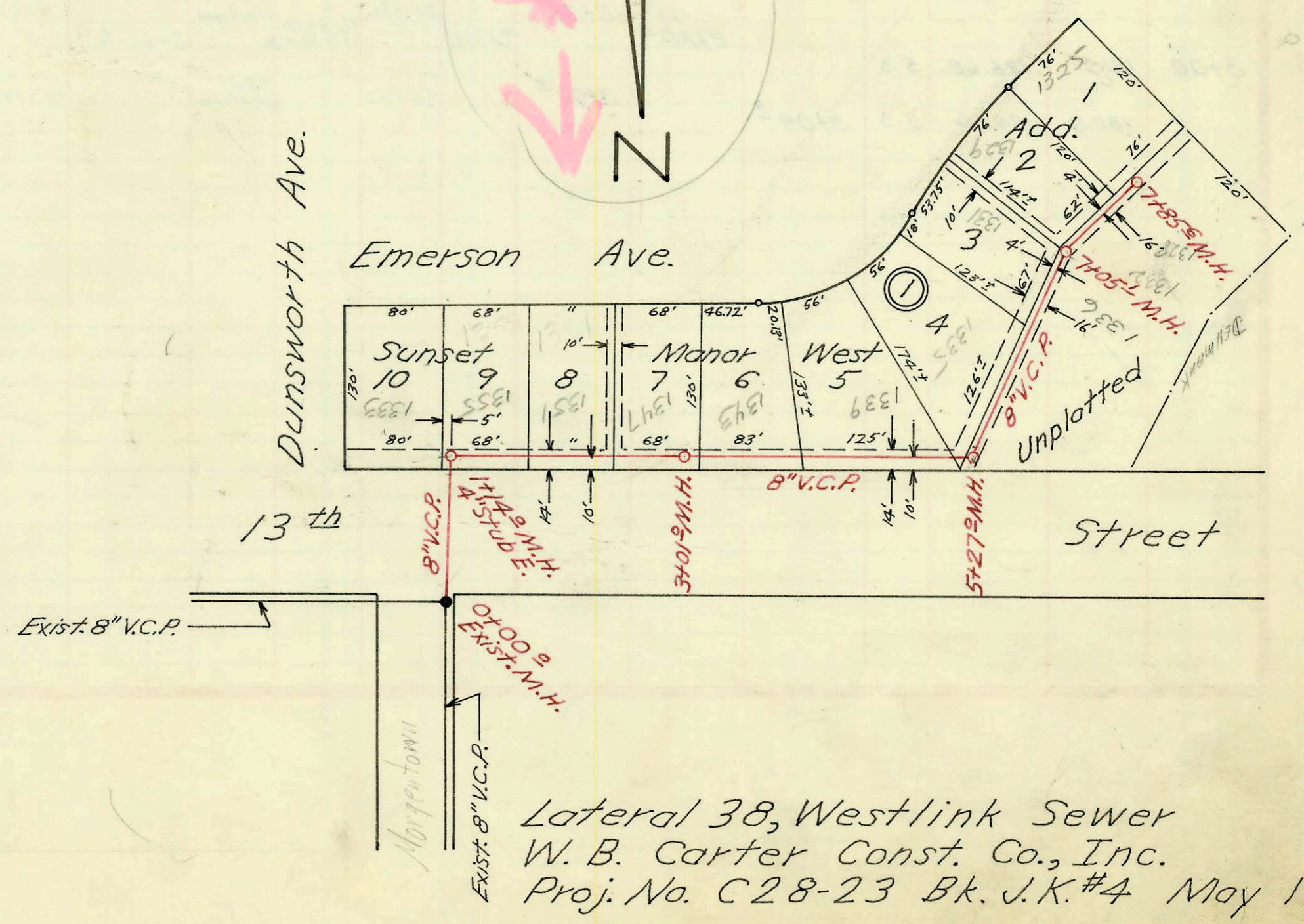
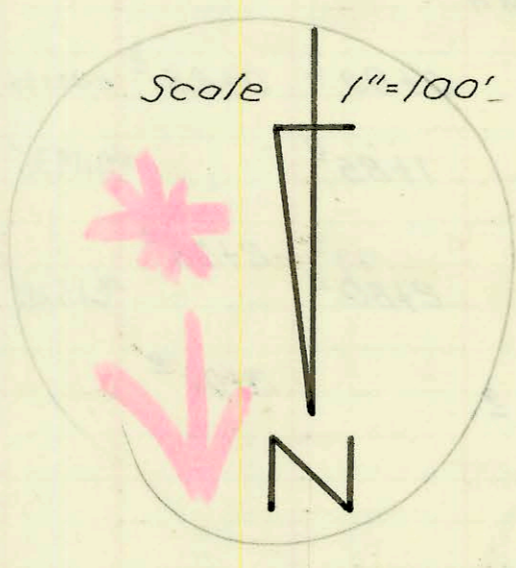


LAT. 1, SUB. 21, S. 8. NO. 22  
MID-STATES CONST. CO. INC.  
PROJ. NO. C25-21 BK. NO. K-84  
JUNE 2, 1966

L 6708  
5736



Lateral 38, Westlink Sewer  
W. B. Carter Const. Co., Inc.  
Proj. No. C28-23 Bk. J.K.#4 May 1968

### CONSTRUCTION RECORD

### SERVICE RECORD

STATION	ELEVATION		Depth	MANHOLE	4-INCH "Y" BRANCHES		No. of Permit		House Number		DATE OF PERMITS	
	Ground	Grade			North West	South East	North West	South East	North West	South East	North West	South East
0+00	133.5	126.13	7.4	0+00.0 New MH								
	133.5'	126.26 out 126.36 in	7.2 7.1	0+68°								
1+00	133.1	126.43	6.7									
	132.8	126.62 out 126.72 in	6.2 6.1	1+96°	1+49°		B5834		3859 Emerson		6-16-66	
2+00						2+13° 2+94°		C3808	3865 Emerson		7/5/67	
3+00	132.6	126.92	5.7			2+94° 3+47°		C3320	3871 Emerson		5-29-67	
	133.0	127.06	5.9	3+70°		3+75°		C3319	3874 Emerson		5/29/67	
4+00	133.3	127.12	6.2			4+58°		C20002	3885 Emerson		7-8-70	
5+00	133.2	127.32	5.9			5+28°		3861 B5761	3891 Emerson		6-3-66	
	133.1	127.39 out 127.49 in	5.7 5.6	5+36°								
6+00	133.0	127.62	5.4		6+10°	6+08°		4018875 C24381	1705 Nottingham	1701 Nottingham	4-17-70	5-17-71
7+00	132.9	127.82	5.1									
7+15°	133.3	127.85	5.4									
7+15°	End 8" V.C.P. "plugged"											
0+00	133.5	126.65	6.8	0+00.0 LINE NO. 2 = 1+96.0 LINE NO. 1		0+51° 0+55°		B5816	1719 Nottingham	1725 Nottingham	6-14-66	11-7-66
1+00	133.3	126.85	6.4									
1+79°	133.4	127.01	6.4									
1+79°	End 8" V.C.P. "Plugged"											
0+00	133.5	126.75	6.7	0+00.0 LINE NO. 3 = 1+96.0 LINE NO. 1		0+07° 0+88°		B5815	3853 Emerson		6-14-66	
1+00	133.6	126.95	6.7									
	133.2	127.09 out 127.18 in	6.1 6.0	1+67°	4" Stub SW			C15173	3847 Emerson		7-30-67	
2+00	134.4	127.40	7.0	2+18°	4" Stub N			C21756	1731 Nottingham		11-12-70	
0+00	133.5	127.18	6.3	0+00.0 LINE NO. 4 = 3+70.1 LINE NO. 1		0+50°		C863	1707 Nottingham		11-17-66	
	132.9	127.40	5.5		4" Stub NE 4" Stub NW			C862	1713 Nottingham		11-17-66	
Lot 38, Westlink Sewer												
0+00	151.0	143.20	7.8	0+00.0 Exist. M.H.								
1+00	150.3	143.40	6.9									
	150.5	143.43 out 143.53 in	7.1 7.0	1+14°	4" Stub E.			C9024	1333 Denworth		6-7-68	
2+00	151.9	143.70	8.2			1+48° top 1+60.0		C39563	1355 Emerson		6-19-73	
						2+05° 2+62°		C42091	1351 Emerson		11-6-73	
3+00	152.2	143.90	8.3			top 3+73.9		C43301	1347 Emerson		2-1-74	
	152.2	143.90	8.3	3+01°		top 3+24.3 3+40°		C43463	1343 Emerson		2-13-74	
4+00	152.4	144.10	8.3			4+28°						
5+00	152.4	144.30	8.1			top 4+37.6		C47110	1339 Emerson		3-25-74	
	152.8	144.35 out 144.45 in	8.5 8.4	5+27°		5+55°		C45802	1335 Emerson		7-17-74	
6+00	151.8	144.60	7.2			top 6+03.10						
7+00						6+78.8 6+64.6		C62654	1336 Denmark	1331 Emerson	12-2-77	4-17-74
	151.6	144.81 out 144.91 in	6.8 6.7	7+05°		7+53.0 top		C68324	1332 Denmark		7-25-75	
						7+23° 7+76°		C68325	1330 Denmark		9-13-77	
	152.2	145.07	7.1	7+85°		top 7+59°		C47005	1329 Emerson		10-15-74	
								C46363	1325 Emerson		8-27-74	

LINE NO. 1

LINE NO. 2

LINE NO. 3

LINE NO. 4

L