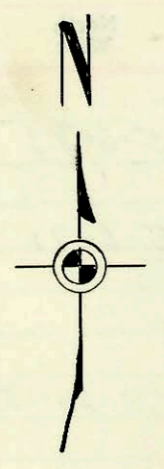
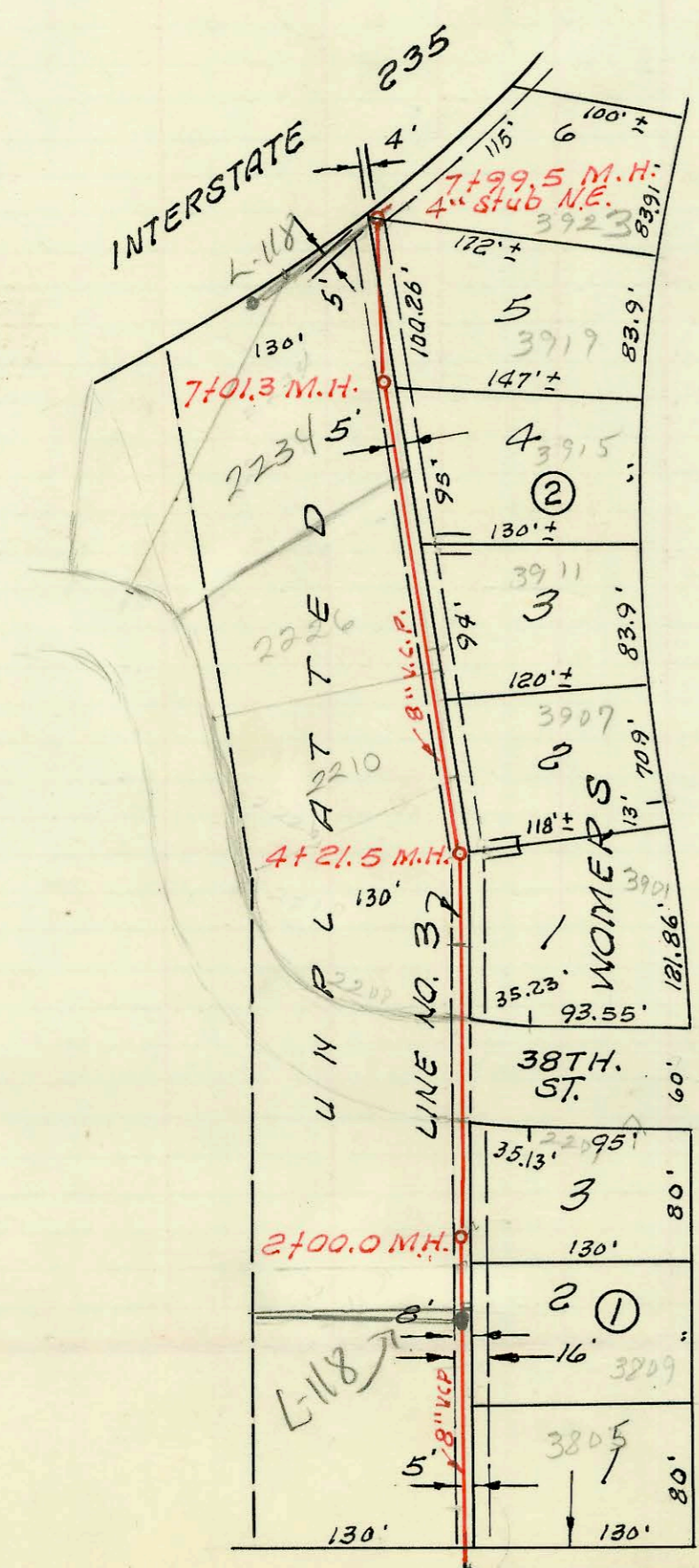
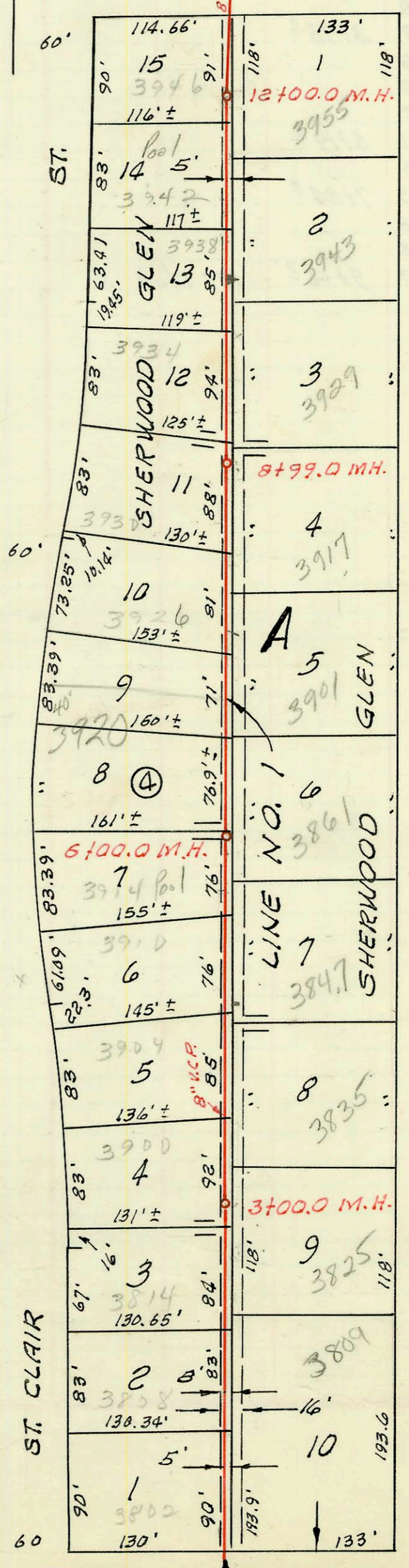
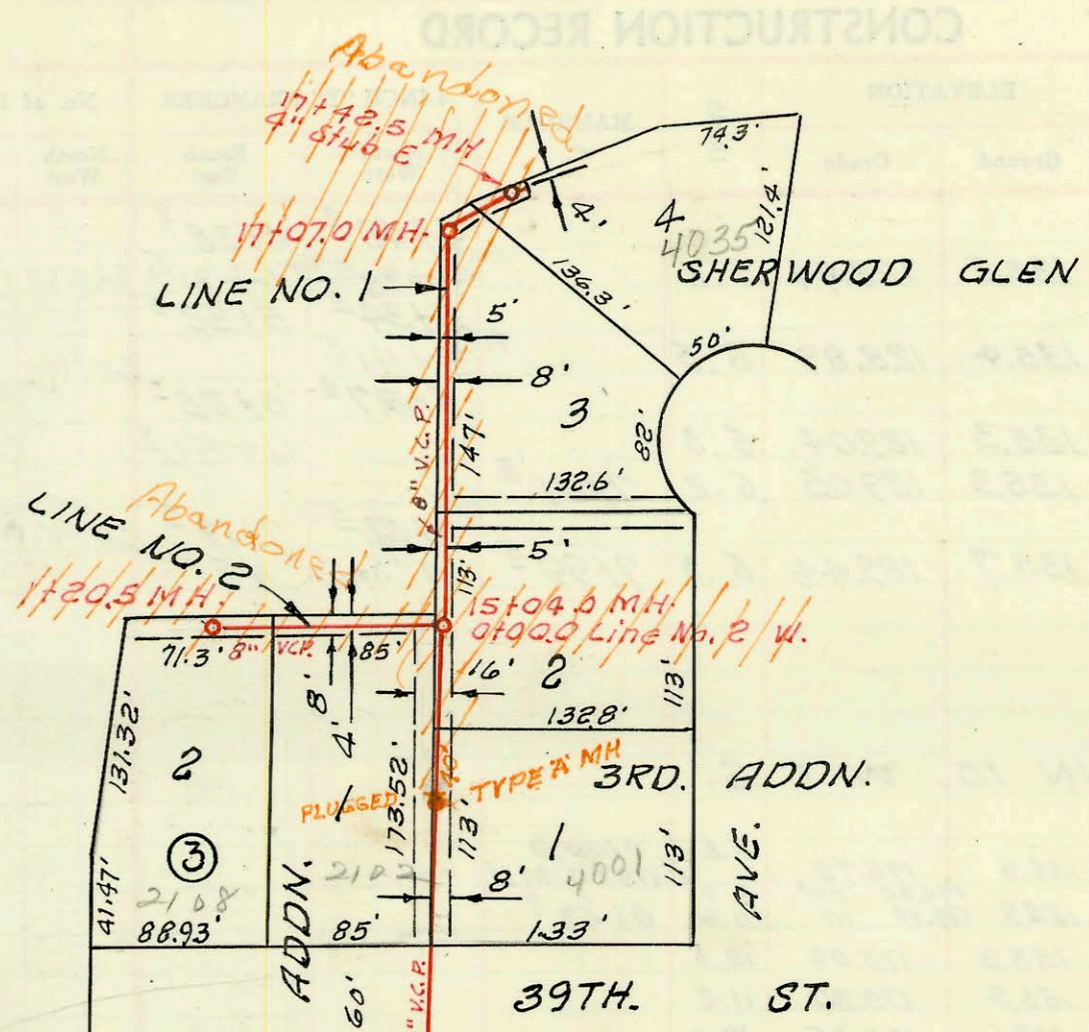


CONSTRUCTION RECORD



1" = 100'

LAT. 9, SUB. 21, S. S. NO. 22
W. B. CARTER CONST. CO. INC.
PROJ. NO. C25-36, BK NO. K-81
JUNE 6, 1966



at 00.0 Exist'g M.H.
Exist'g 8" stub N.

at 00.0 Exist'g M.H.
Exist'g 8" stub N.

37TH. ST.

ST.

CONSTRUCTION RECORD

SERVICE RECORD

LINE NO. 1

STATION	ELEVATION		Depth	MANHOLE	4-INCH "Y" BRANCHES		No. of Permit		House Number		DATE OF PERMITS	
	Ground	Grade			North West	South East	North West	South East	North West	South East	North West	South East
0+00	135.8	127.36	8.4	0+00.0 Existg MH.								
0+05.0		Beq. proj.										
1+00	135.5	127.51	8.0									
2+00	135.4	127.66	7.7									
3+00	135.2	127.81	7.4	3+00°								
4+00	135.7	127.96	7.7									
5+00	135.9	128.11	7.8									
6+00	136.6	128.26	8.3	6+00°								
7+00	137.6	128.41	9.2									
8+00	137.7	128.56	9.1									
9+00	137.4	128.71	8.7	8+99°								
10+00	137.1	128.86	8.2									
11+00	137.2	129.01	8.2									
12+00	137.7	129.16	8.5	12+00°								
13+00	136.4	129.36	7.0									
14+00	136.2	129.56	6.6									
15+00	138.3	129.77	8.5	15+04°								
16+00	138.6	129.96	8.6									
17+00	137.8	130.16	7.6									
	137.8	130.17 out	7.6	17+07°								
	137.8	130.27 in	7.5									
	137.8	130.41	7.4	17+42°	4" s/46 E.							
0+00	138.1	129.84	8.3	0+00.0 Line No. 2 = 15+04.0 LINE NO. 1								
1+00	138.0	130.27	7.7									
	137.9	130.35	7.5	1+20°								
0+00	135.9	127.99	7.9	0+00.0 Existg MH.								
0+05°		Beq. proj.										
1+00	135.3	128.14	7.2									
2+00	135.1	128.29	6.8	2+00°								
3+00	135.5	128.44	7.1									
4+00	135.6	128.59	7.0									
	135.6	128.62	7.0	4+21°								

LINE NO. 2

LINE NO. 3

NOTE: Line No. 3 Continued on page 53