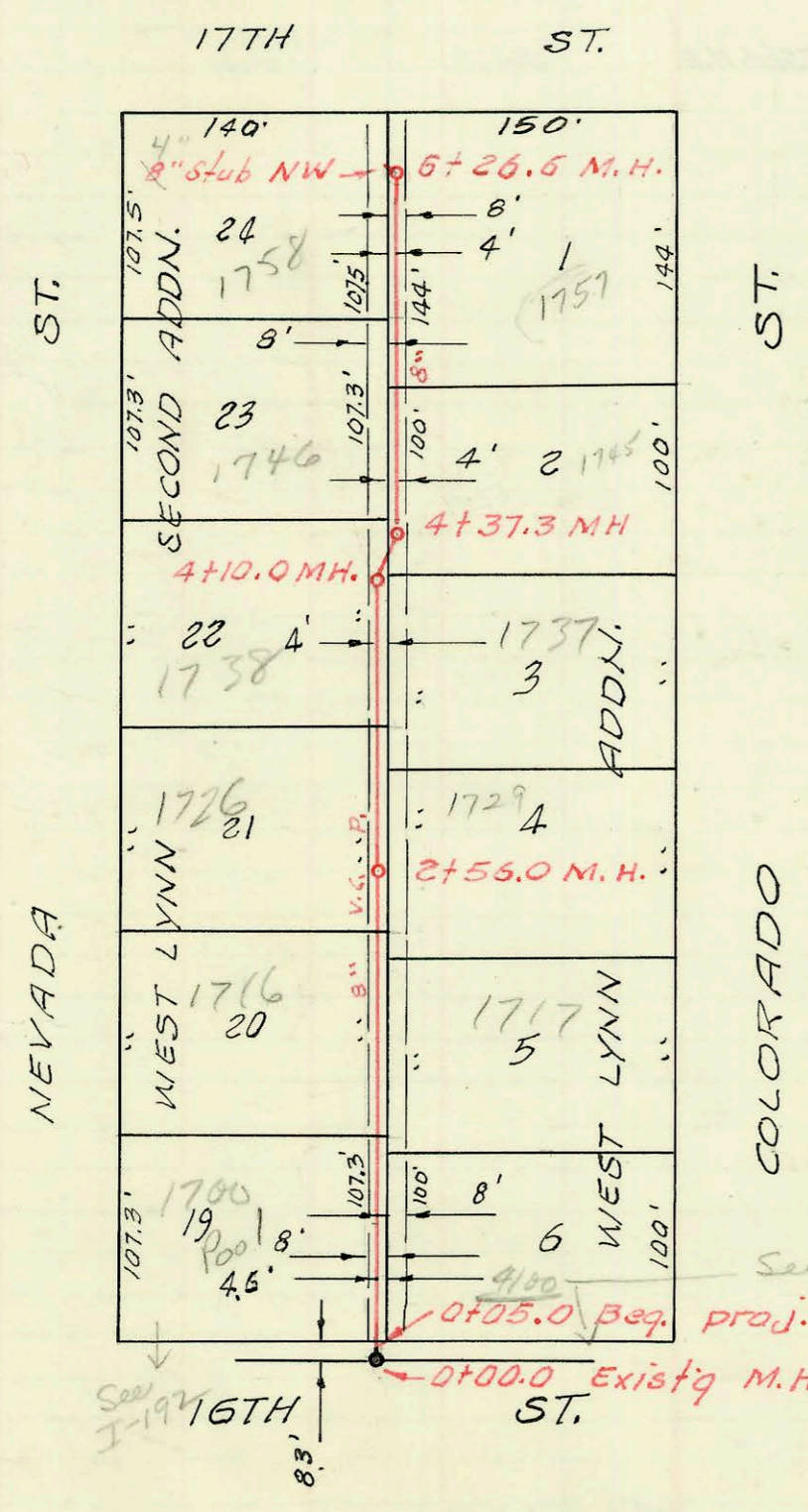


LAT. 181, SUB. 5, S. S. NO. 22
 MID-STATES CONST. CO. INC.
 PROJ. NO. C24-21, BK NO. K-83
 12-7-66

L.



LAT. 135, SUB. 5, S. S. NO. 22
 MID-STATES CONST. CO. INC.
 PROJ. NO. C29-98, U. K. #7
 8-10-1967

See I-192 for layout in Section 16

