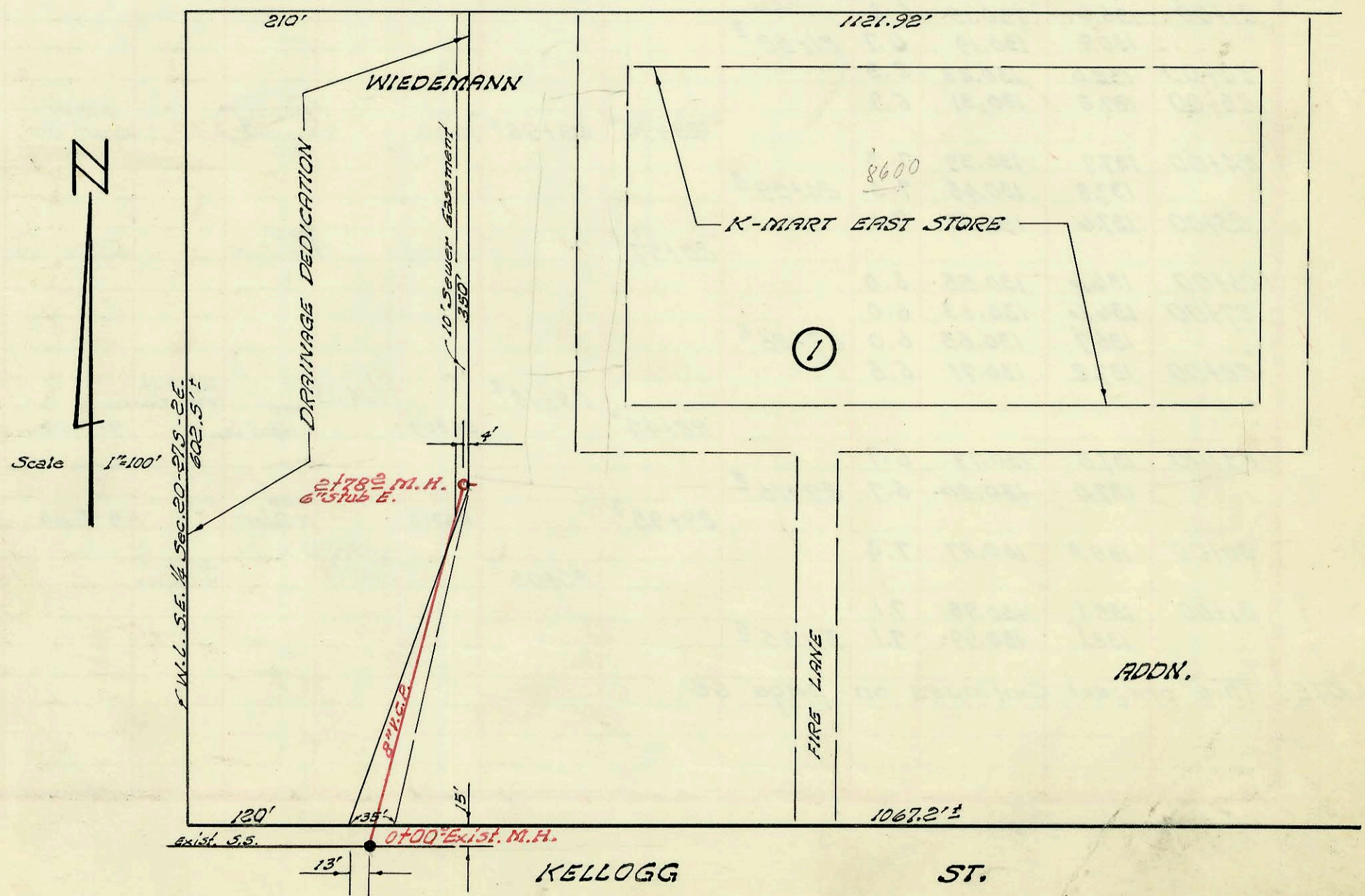


1" = 100'

LAT. 61, D.C.S. NO. 2, S. S. NO. 12
 MID-STATES CONST. CO. INC.
 PROJ. NO. C27-77, BK. NO. K-88
 SEPT. 14, 1966

0+100.0 Beg. project. *to M.H. - pipe measurement from 2+01 M.H.*



Scale 1" = 100'

KELLOGG ST.
 K - MART EAST S. S.
 UTILITY CONTRACTORS SEPT. 1966
 PRIVATE PROJECT K-79A BOOKED 10-10-66

