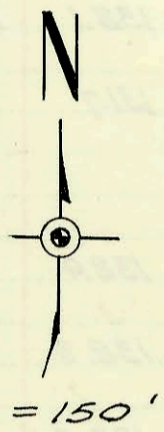
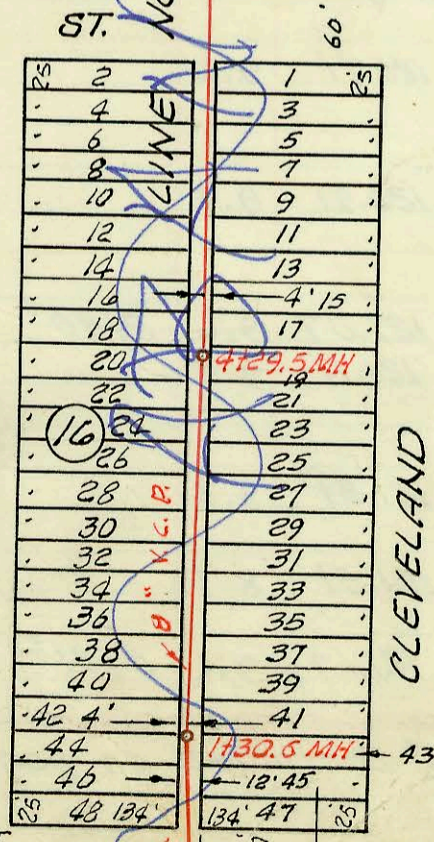
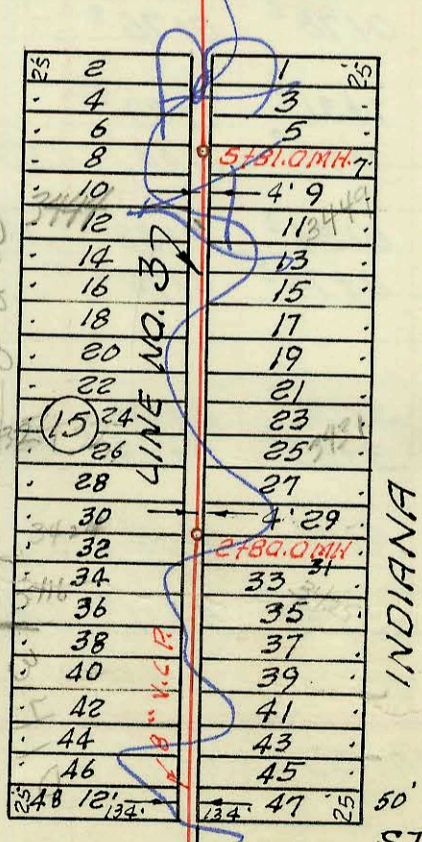
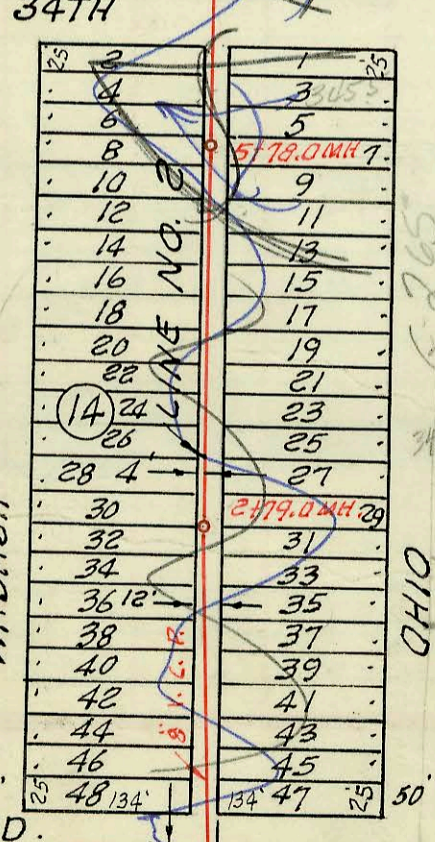
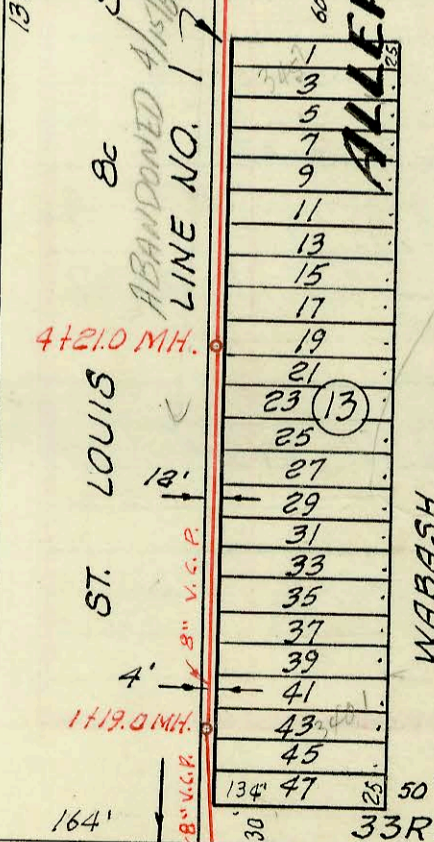
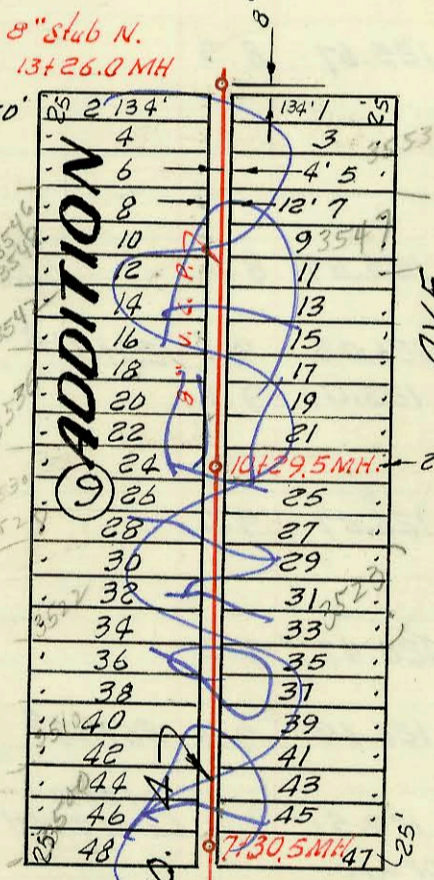
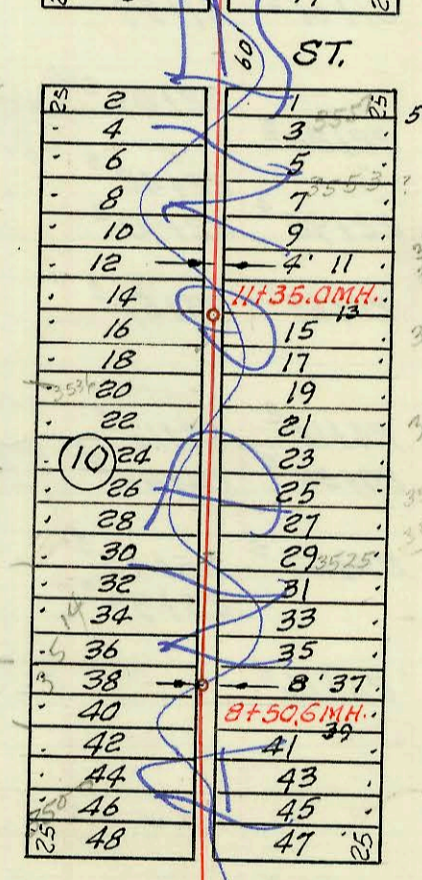
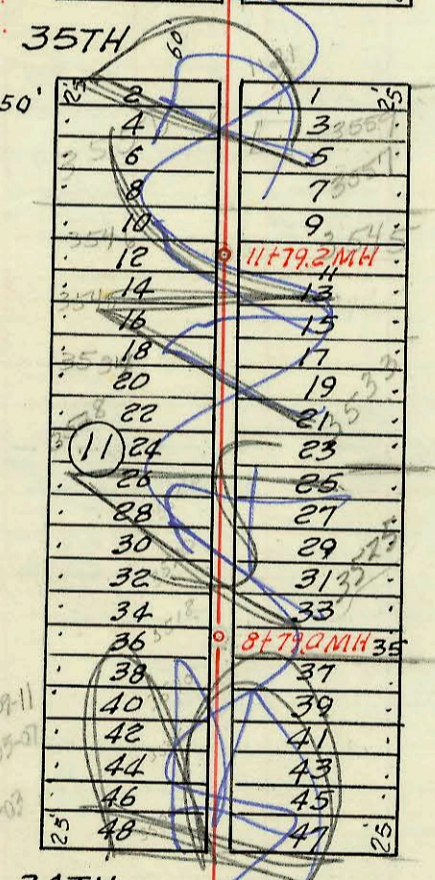
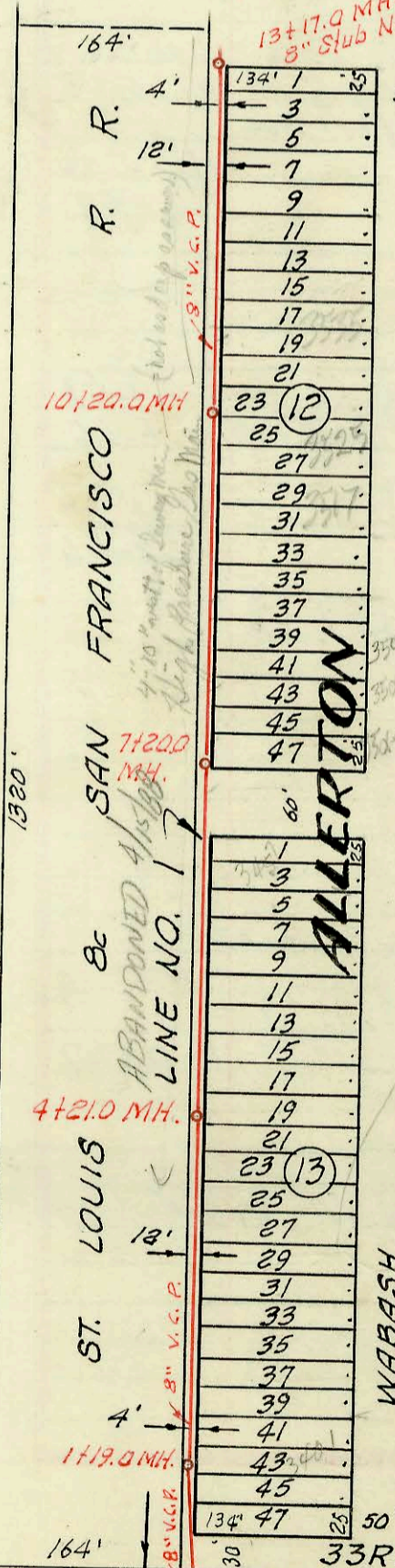
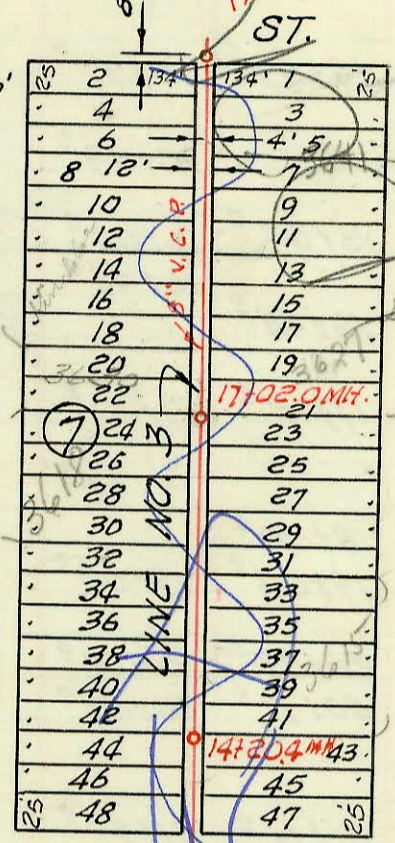
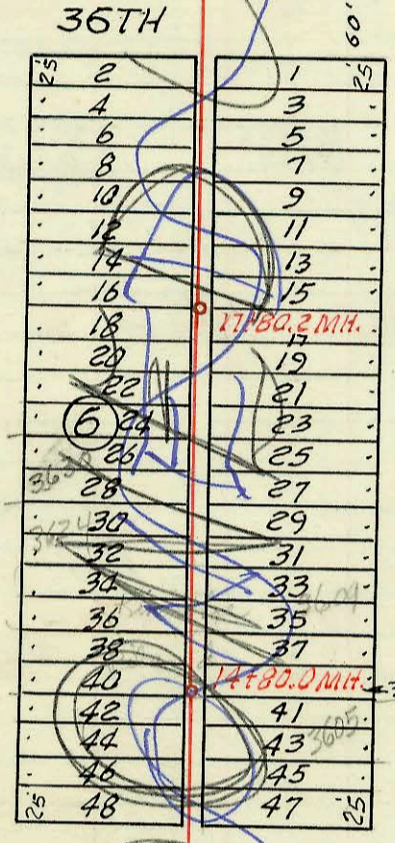
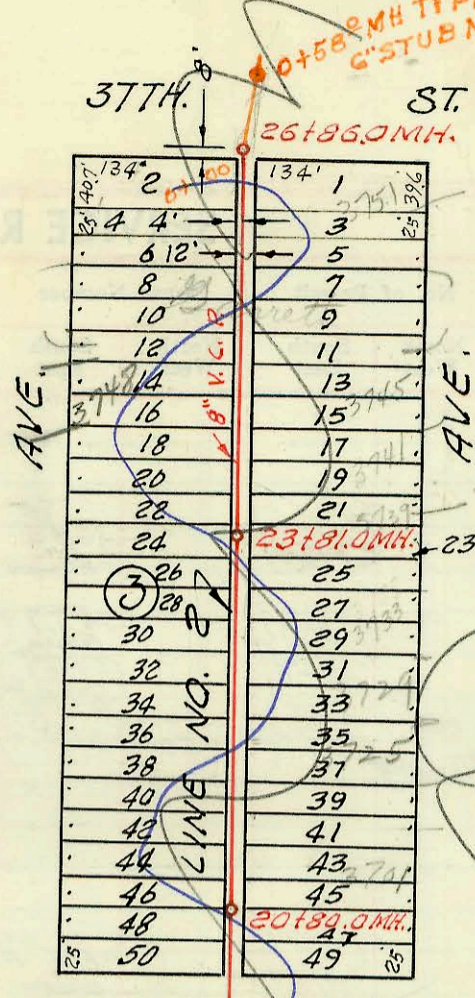


PRIVATE SAN SEWER IMPALA INDUSTRIES
BUILT BY: W.B. CARTER CONST. CO.
PROJ. NO. AAKB 502001
BOOKED 4-24-72 FROM 1HT5
(See Page 84)
for connection records

LAT. 56, SUB. 4, S. S. NO. 23
UTILITY CONTRACTOR INC.
PROJ. NO. C 26-16 BK. NO. K-83A
SEPT. 20, 1966
See G265

NOTE: Construction Record
booked on pages
67, 68, 69 & 70.



Abandoned line sealed in drawings dtd 4/15/88
Line to West Sealed 4/15/88 abandoned see L35 G265
at 05.0 Beg. Proj. at 00.0 Existg MH.
at 05.0 Beg. Proj. at 00.0 Existg MH.
at 05.0 Beg. Proj. at 00.0 Existg MH.
at 05.0 Beg. Proj. at 00.0 Existg MH.

CONSTRUCTION RECORD

SERVICE RECORD

STATION	ELEVATION		Depth	MANHOLE	4-INCH "Y" BRANCHES		No. of Permit		House Number		DATE OF PERMITS	
	Ground	Grade			North West	South East	North West	South East	North West	South East	North West	South East
0+00	129.4	122.61	6.8	0+00.0 Exist'g MH								
0+05.0	Beg. proj.											
1+00	129.8	122.81	7.0									
	129.2	122.85	6.3	1+19°								1-28-76 11-21-67
2+00	129.5	123.01	6.5									
3+00	130.1	123.21	6.9									
4+00	129.9	123.41	6.5									
	130.1	123.45	6.6	4+21°								
5+00	130.2	123.61	6.6									
6+00	130.3	123.81	6.5									
7+00	130.3	124.01	6.3									
	130.7	124.05	6.6	7+20°								
8+00	131.2	124.21	7.0									
9+00	131.2	124.41	6.8									
10+00	131.3	124.61	6.7									
	131.3	124.65	6.6	10+20°								
11+00	131.0	124.81	6.2									
12+00	131.0	125.01	6.0									
13+00	131.0	125.21	5.8									
	131.4	125.25	6.1	13+17°	8" stub N.							
0+00	130.0	121.27	8.7	0+00.0 Exist'g MH								
0+05°	Beg. proj.											
1+00	129.6	121.47	8.1									
2+00	129.3	121.67	7.6									
	129.5	121.83	7.7	2+79°								
3+00	129.6	121.87	7.7									
4+00	129.8	122.07	7.7									
5+00	129.7	122.27	7.4									
	130.1	122.43	7.7	5+78°								6-26-70
6+00	130.3	122.47	7.8									
7+00	130.4	122.67	7.7									
8+00	130.8	122.87	7.9									
	130.7	123.03	7.7	8+79°								
9+00	130.7	123.07	7.6									
10+00	131.3	123.27	8.0									

LINE NO. 1

LINE NO. 2

NOTE: Line No. 2 continues on page 68.