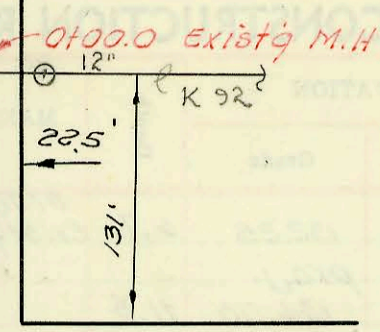


SERVICE RECORD

DATE OF PROJECT	PROJECT NO.	DESCRIPTION	BY	DATE

0+05.0 Beg. proj.



Maint. Prob.  
 On 7-14-72 C.I.P.  
 on siphon led to  
 extend 3' into each  
 MH, one barrel plugged (E)  
 maint. impossible.

ROAD

GRAIL ST.

1+91.0 M.H. Beg. Siphon

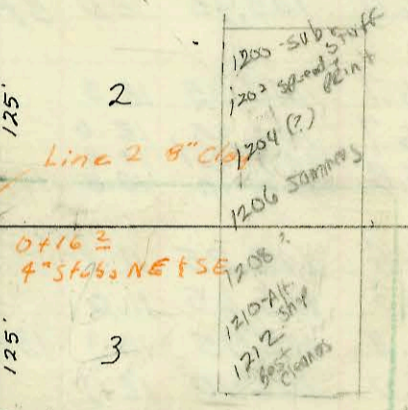
Line 1 8" clay

2+91.0 M.H. End Siphon

0+15.3  
 4" stub SE  
 Fastino's REST.  
 TRIPLE J.

Lat 9 Main 16 WIS  
 Built by Utility Cont Inc  
 Booked 4-8-74 from 277-Y  
 BOSTON AVE.  
 Proj. No. DBKL573079

LINE IS NOT UNDER PREPARED PAVEMENT



6+12.0 M.H.

ADDITION

Line 3 8" clay

0+16.3 4" stub NE SE

5+23.0 7" stub

SUB. 16, W. I. S.

MID-STATES CONST. CO. INC.

PROJ. NO. C26-52, BK. NO. K-85

OCT. 17, 1966

9+21.5 M.H.

0+26.6 M.H.

6" stub SE

1250 sink

22.5'

0+00 BEG. 8" V.C.P.

ROCK

HARRY ST.

ST.

12+36.5 M.H.  
 18" stub S.  
 8" stub W.

Service Station  
 will top M.H. upper Eng.  
 Walter  
 7/10/72

Solve for East Addr.  
 Chg for 2 spec. Lateral for only  
 will be in bar dist. for  
 Submain to be built later

8" Main FHT  
 Reg'd for  
 Prop. Bldg  
 Per U.I. Hwy  
 3/31/63  
 SAC

LAT 4, SUB. 16, W. I. S.  
 Mid States Const. Co. Inc.  
 D.E.S. #4 Private Project  
 4/15/69

CONSTRUCTION RECORD

SERVICE RECORD

LINE NO. 4  
Continued

SUBMAIN 16. W. I. S.

STATION	ELEVATION		Depth	MANHOLE	4-INCH "Y" BRANCHES		No. of Permit		House Number		DATE OF PERMITS	
	Ground	Grade			North West	South East	North West	South East	North West	South East	North West	South East
11+00	132.4	122.98	9.4		10+62 <sup>s</sup> 10+94 <sup>s</sup>	10+60 <sup>s</sup>	C53437 C19461		5586 20 Indiana		5-28-76 5-26-70	1-22-76 8-18-67
12+00	132.7	123.18	9.5		11+34 <sup>s</sup> 11+98 <sup>s</sup>	11+32 <sup>s</sup> 11+96 <sup>s</sup>	C763 C678	C4506 C4505	3542 Indiana 3541 Cleveland 3547 Cleveland		11/8/66 11/2/66	8-18-67 8-18-67
13+00	132.8 132.9	123.38 123.43	9.4 9.5	13+26 <sup>s</sup>	12+94 <sup>s</sup> 12+92 <sup>s</sup>	12+92 <sup>s</sup>						
					8" stub N.							
0+00	134.8	126.28	8.5	0+00.0								
0+05 <sup>s</sup>	Beg. proj.			Exist'g MH.								
1+00	134.5	126.48	8.0									
	138.6	126.66	11.9	1+91 <sup>s</sup>	Beg. Syphon							
2+00												
	132.5	127.77	4.7	2+91 <sup>s</sup>	End Syphon							
3+00		127.71										
4+00	136.5	128.16	8.3									
5+00	140.2	128.51	11.7									
6+00	138.0	128.86	11.1									
	138.2	128.89	9.3	6+12 <sup>s</sup>								
7+00	139.2	129.21	10.0									
8+00	139.2	129.56	9.6									
9+00	139.1	129.91	9.2									
	139.3	129.98	9.3	9+21 <sup>s</sup>								
10+00	139.2	130.26	8.9									
11+00	140.4	130.61	9.8			11+92.5	C74467		8001 E. Harry		9-21-79	
12+00	139.0	130.96	8.0									
	137.5	131.07	6.4	12+36 <sup>s</sup>	8" stub W. 132.25 18" stub S. 131.07	M.H. top	C73844 C37521		8001 E. Harry		8-23-79 2-28-73	
(Lat. 4 across street)												
0+00	139.0	133.50		EXIST. MH. 0+00			C30230		1240 S. Rock Road		1-28-72	
	143.4	133.72		0+126.6	6" STUB SE	M.H. top	C3635		1250 S. Rock Road		4-17-69	
Lat 9 Main 16 WIS												
Line 1												
0+00	134.4	128.53	5.9	0+00 Exist.			93 25277		1140 S. (Fastrid)		9-24-77	
	134.8	128.83	6.0	0+15 <sup>s</sup> 4" stub SE	see below 4" clay s/s inside MH		92 44 865-7 C4554		1140 S. (Fastrid) Rock Road		12-17-77	
Line 2												
0+00	139.0 <sup>s</sup>	129.33	9.7	0+00	6" ABS SE 8" Plug into MH		C73789		1212 S. Rock		8-21-79	
	138.2	129.63	8.6	0+16 <sup>s</sup> NE FSE								
Line 3												
0+00		130.1		0+00	4" stub 4" ARMO (GEOMETR)							
	142.23	130.41	11.8	0+16 <sup>s</sup> NE FSE	4" stub NE 4" stub SE		C68545	C44441	1218 S. Rock Rd	1230 S. Rock Rd	9-26-78	4-15-74

C74836 1214 S. Rock Rd - 10-15-79 (changed) 8" line from MH 0+16.  
 Rec. 156101 - 2-28-73 - 8001 E. Harry - Robert Mc Coy - 120' Lat. across for  
 #93-25277-7 1140 S. Rock Rd - N/C - 4" PVC40 - tied into an existing  
 4" ABS 40 line which was not sealed off. There was a southeast  
 stub sealed off from MH - Connection made 37 ft east of manhole -  
 4 1/2' deep - shallow