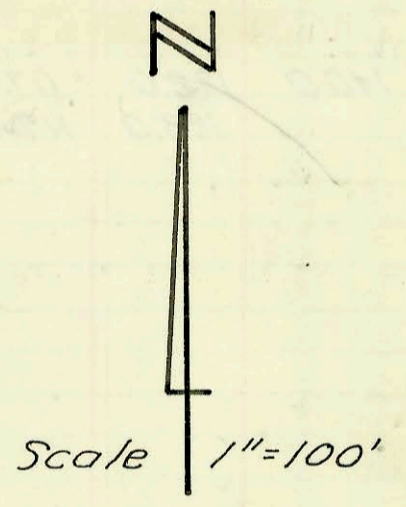
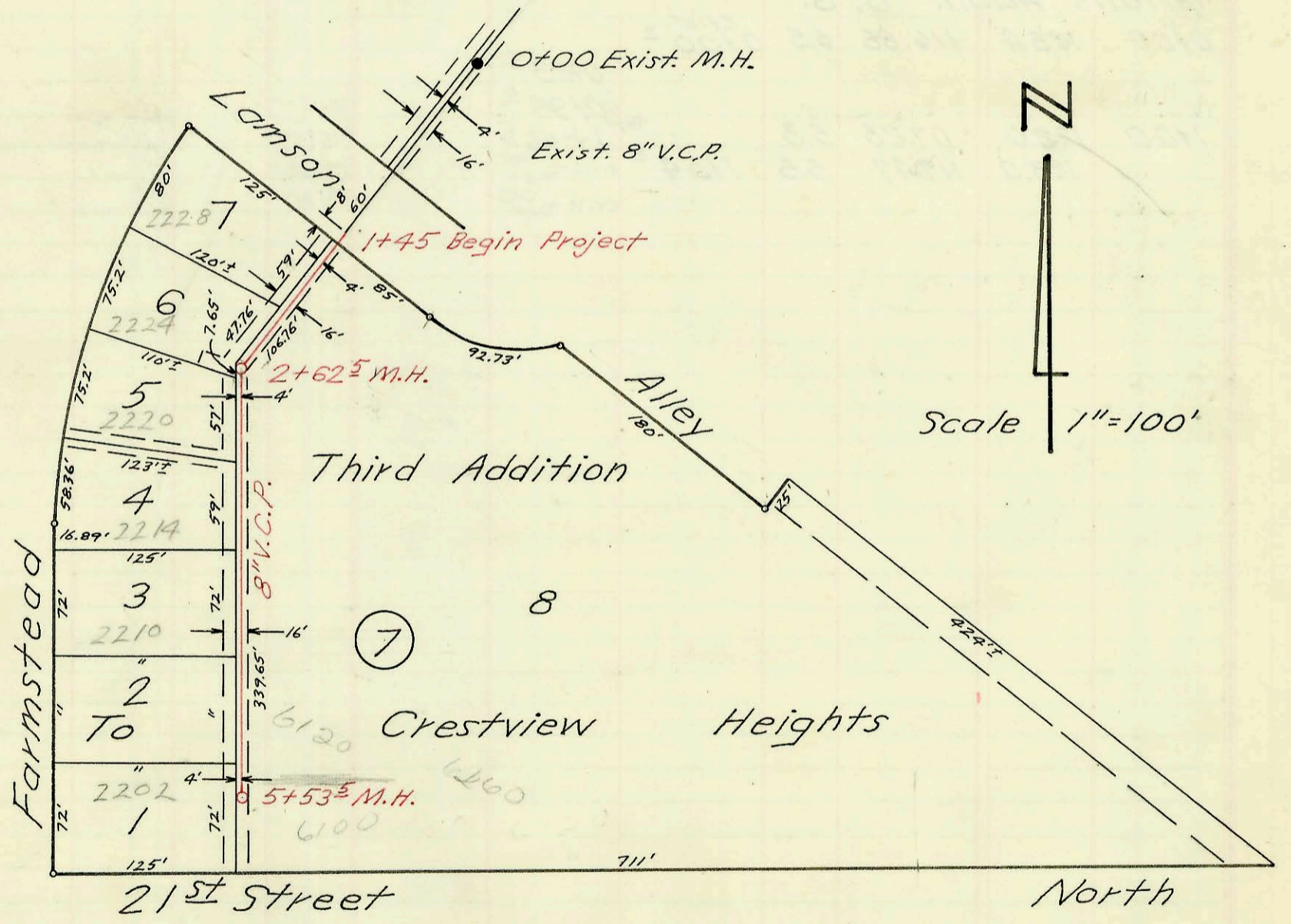
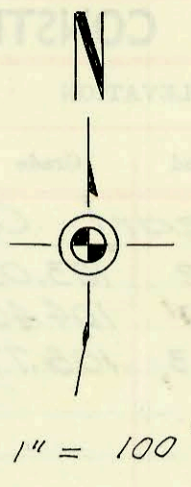


SEE M-3
Kane Ln.
Callen Lane

LAT. 20, SUBMAIN 5, S. S. NO. 23
W. B. CARTER CONST. CO. INC.
PROJ. NO. C26-49 BK. NO. K-90
JAN. 13, 1967



Lateral 21, Sub. 5, S.S. No. 23
Mid-States Constr. Co., Inc. Jan. 1968
Proj. No. C26-50 Bk. K-90 Booked 2-15-68

CONSTRUCTION RECORD						SERVICE RECORD						
STATION	ELEVATION		Depth	MANHOLE	4-INCH "Y" BRANCHES		No. of Permit		House Number		DATE OF PERMITS	
	Ground	Grade			North West	South East	North West	South East	North West	South East	North West	South East
0+00	193.4	183.00	10.4	0+00.0 New MH	8" stub NE							
1+00	192.8 192.7	183.40 183.60 out 183.70 in	9.4 9.1 9.0	1+49 [±]	0+74 [±]	0+72 [±]	C3754	C5452	2313 Samson	2309 Samson	6-28-67	10-26-67
2+00	193.5 195.3	183.90 184.01 out 184.10 in	9.6 11.3 11.2	2+27 [±]	4" stub NE							
3+00	194.5	185.20	9.3	3+28 [±]	2+40 [±]		C1569		5820 Kane	2225 Farmstead	1-10-69	1-16-67
4+00	195.1	186.70	8.4	4+08 [±]	3+08 [±]		C12152	C1545	5820 Kane	2221 Farmstead	1-10-69	12-13-67
				4+19 [±]	3+96 [±]		C12153	C3054	5826 Kane	2217 Farmstead	1-10-69	5-11-67
	196.5	188.20	8.3	4+99 [±]	4+19 [±]		C12671		5832 Kane		2-6-69	
5+00				5+12.4			C11668		5827 Kane	2213 Farmstead	11-25-68	3-2-67
					5+06 [±]		C2103					4-26-67
6+00	197.8	189.70	8.1	6+10.2	5+72 [±]		C11667	C2849	5821 Kane	2209 Farmstead	11-25-68	
					6+45 [±]							
7+00	198.3	191.20	7.1	7+28 [±]	6+79 [±]		C2577	C24048	5815 Kane	2205 Farmstead	11-25-68	4-6-67
	198.4	191.65	6.7		7+15 [±]		C11666		5822 Kane	2202 Farmstead	11-25-68	4-21-71

Lot 21, Sub. 5, S.S. No. 23

0+00				0+00 EXIST. M.H.	1+45 Begin Project							
1+45	198.8	187.95	10.9		1+86 [±]		C7797		2228 Farmstead		4-10-68	
2+00	199.2	188.22	11.0	2+62 [±]	2+54 [±]		C68567		2224 Farmstead		9-27-71	
	198.8	188.50 out 188.60 in	10.3 10.2		2+99 [±]		C6677		2224 Farmstead		1-31-68	
					2+99 [±]		C68584		2220 Farmstead		9-28-71	
3+00	199.5	189.20	10.3		3+55 [±]		C6678		2220 Farmstead		1-31-68	
4+00	200.4	190.70	9.7		4+23 [±]		C6679		2214 Farmstead		1-31-68	
					4+79 [±]		C6710		2210 Farmstead		1-31-68	
5+00	202.5	192.20	10.3		5+31 [±]		C6709		2202 Farmstead		1-31-68	8-17-84
	203.5	192.95	10.6	5+53 [±]	5+47.0			11705	6120 Farmstead		8-7-84	

N.C. # 11737 6100 E 21st #14 Thompson 8-10-84 (71' N of MH 5+53.5) (top 4+82.5)
 " # 11740 " " " " " " (234' N of MH 5+53.5) (top 3+16.5)

C1880-2225 Farmstead - Reynolds Reg - 2-14-66 (top of MH 0+0 for same to septic tank to be sealed off when new line is constructed No. of 0+0)
 C25536 no. 2317 Samson 12/20/19 Leon 13th 1+19.5 S PG m-3-845 S of MH.