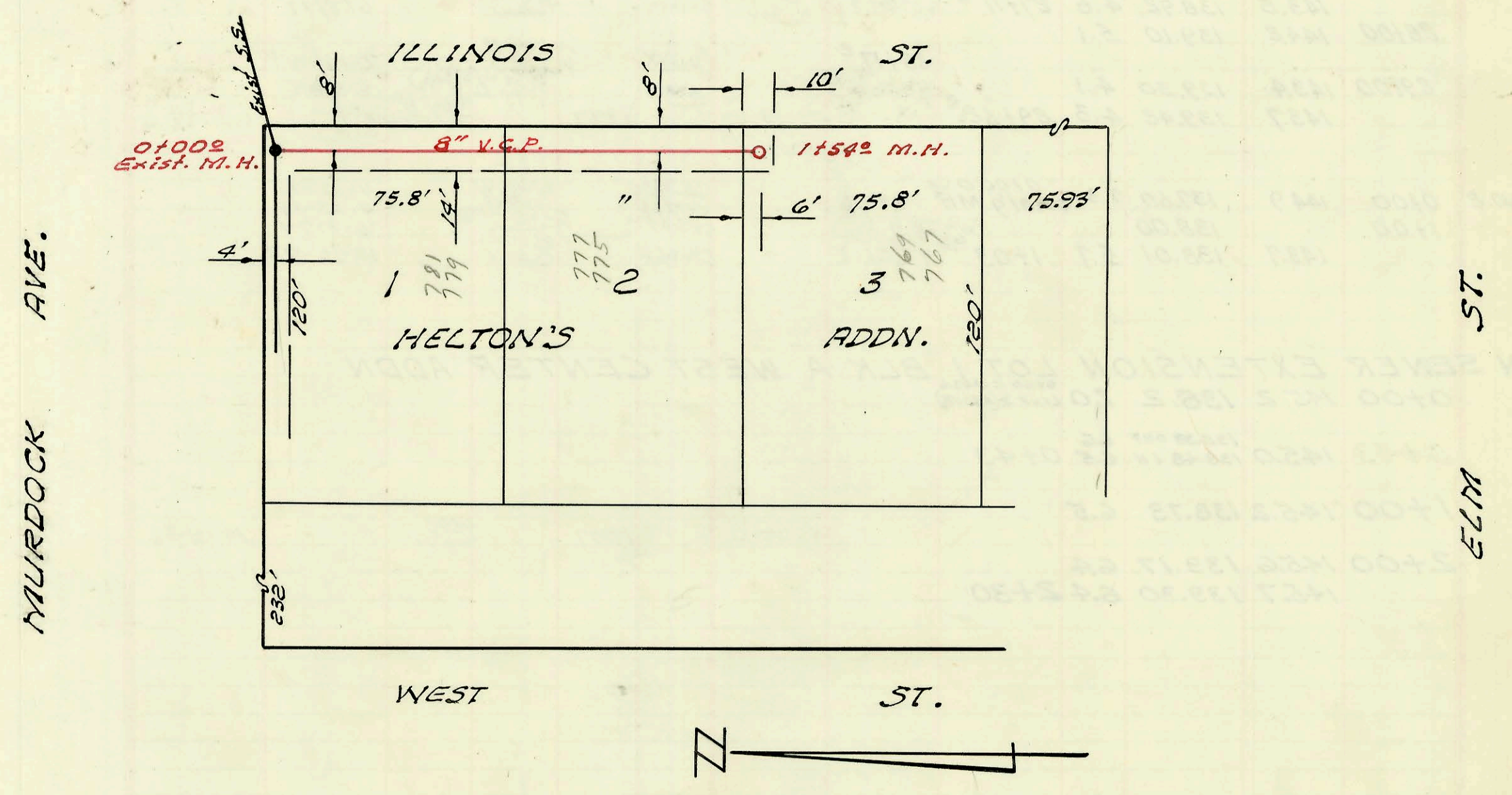


SACRED HEART COLLEGE S.S.  
LIPPOLDT DITCHING NOV. 22-66  
PRIVATE K 83-A BOOKED 1-3-67



HELTON'S ADDN. S.S.  
UTILITY CONTRACTORS INC. 1966  
PRIVATE K-83A BOOKED 1-3-66

CONSTRUCTION RECORD						SERVICE RECORD						
STATION	ELEVATION		Depth	MANHOLE	4-INCH "Y" BRANCHES		No. of Permit		House Number		DATE OF PERMITS	
	Ground	Grade			North West	South East	North West	South East	North West	South East	North West	South East
Sacred Heart College S. S.												
0+00	111.2	103.00	8.2	Exist. 0+00								
1+00	111.7	104.40	7.3									
	112.3	105.77	6.5	1+93 <sup>s</sup>	6" stub S.E.		# C-1022		3100 M <sup>c</sup> Cormick		11-30-66	
Heltons Addn. S. S.												
0+00	123.4	116.86	6.5	Exist. 0+00 <sup>e</sup>								
					0+23 <sup>e</sup>							
					0+99 <sup>e</sup>							
1+00	122.6	117.26	5.3	1+46 <sup>s</sup>			C15837		775-77 Illinois		9-10-69	
	123.0	117.47	5.5	1+54 <sup>e</sup>	mH tap <sup>OK</sup>		13129		769 Illinois		3-4-85	
					mH tap <sup>OK</sup>		13130		767 Illinois		3-4-85	