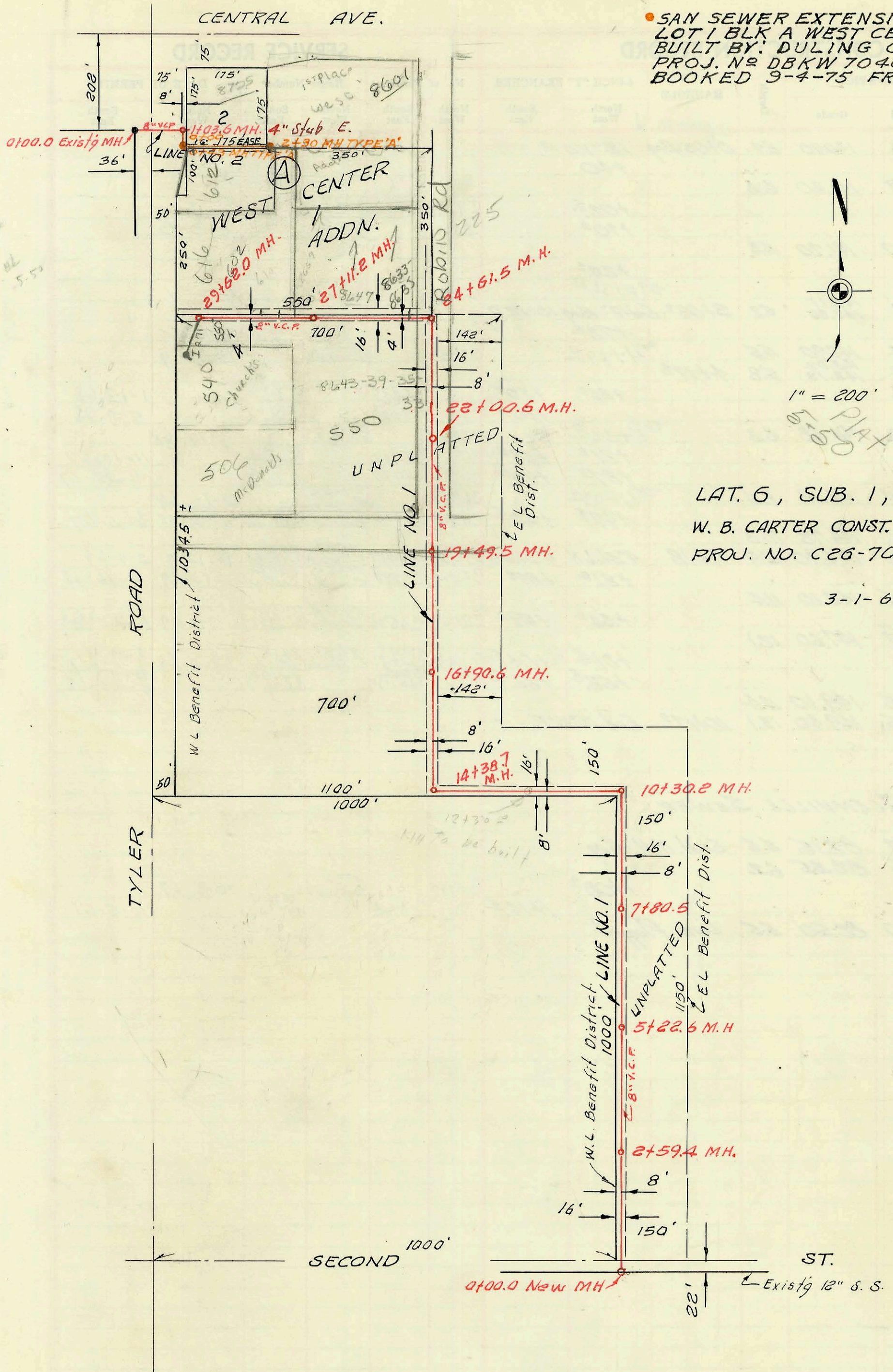


• SAN SEWER EXTENSION
LOT 1 BLK A WEST CENTER ADDN
BUILT BY: DULING CONST.
PROJ. NO. DBKW 704040
BOOKED 9-4-75 FROM PLAN



N
 1" = 200'
 PLAT
 5-50

LAT. 6, SUB. 1, WESTLINK SEWER
 W. B. CARTER CONST. CO. INC., MARCH 1967
 PROJ. NO. C26-70, BK. NO. U.K.#1
 " " U.K.#2
 3-1-67

