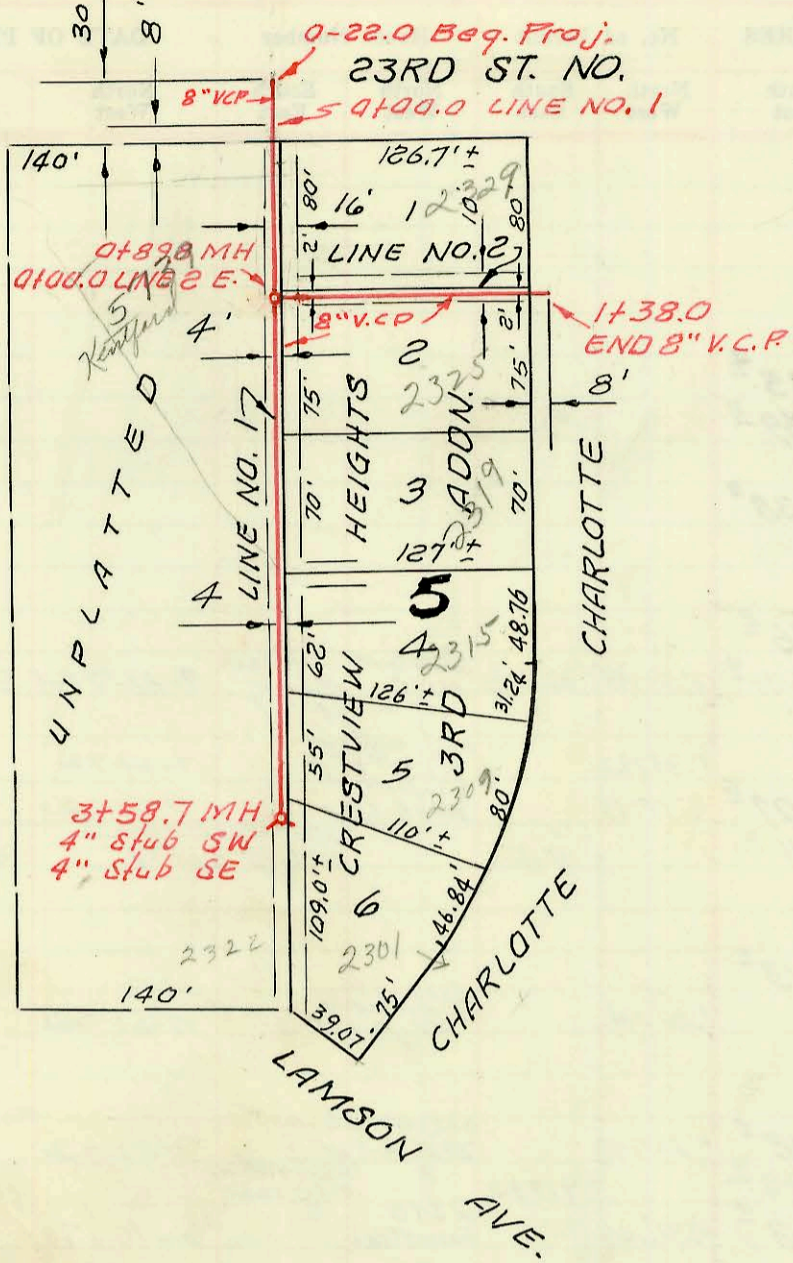


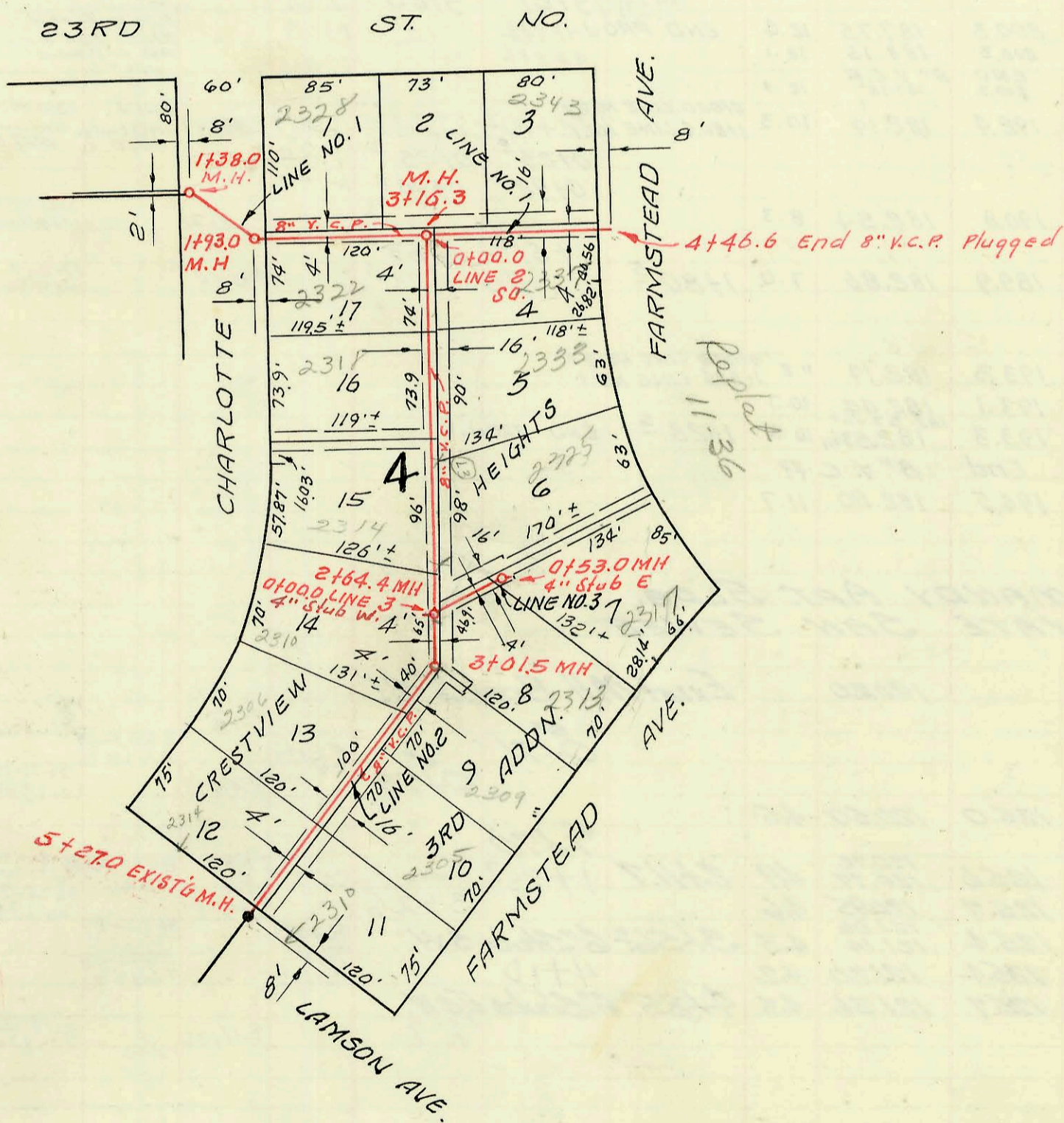
1" = 100'



LAT. 16, SUB. 5, S. S. NO. 23
 W. B. CARTER CONSTRUCTION CO. INC.
 PROJ. NO. C26-45, BK NO. K-89

JUNE 20, 1967

898
22
111.8 H



LAT. 17, SUB. 5, S. S. NO. 23
 W. B. CARTER CONST. CO. INC.
 PROJ. NO. C26-46, BK. K-89

JUNE 20, 1967

CONSTRUCTION RECORD							SERVICE RECORD					
STATION	ELEVATION		Depth	MANHOLE	4-INCH "Y" BRANCHES		No. of Permit		House Number		DATE OF PERMITS	
	Ground	Grade			North West	South East	North West	South East	North West	South East	North West	South East
LINE NO. 1	0-22.0	186.8 Beg. Proj.	176.93	9.9								
	0+00.0	187.5	177.00	10.5								
	1+00	188.3	177.27	11.0	0+89 ²	0+22 ²	0+20 ²	C27801	2329 ¹	Charlotte	9-9-71	
		188.3	177.43	10.9		1+12 ⁵	1+10 ⁵	C21795	2325	Charlotte	11-16-70	
	2+00	189.6	179.03	10.6		1+86 ⁴	1+84 ⁴	C43457	2319	Charlotte	2-13-74	
	3+00	191.2	180.63	10.6		2+56 ²	2+54 ²		2315	Charlotte	5-18-70	
		191.5	181.59	9.9	3+58 ¹	3+19 ⁵	3+17 ⁵	C19357	2322	Lansom	3-17-80	2-25-72
						4" stub SW	4" stub SE	C16854	2301	Charlotte		
LINE NO. 2	0+00	188.2	177.37	10.8	sta. 0+00 LINE NO. 2 = sta. 0+89 LINE NO. 1		0+29 ⁵					
	1+00	187.5	177.67	10.8								
	1+38 ²	189.1	177.79	11.3								
	1+38 ²	189.1	177.79	11.3								
	1+38 ²	End line No. 2										
LINE NO. 1	1+38 ²	189.1	177.79 out	11.3	1+38 ²							
		190.0	178.05 out	12.0	1+93 ²							
	2+00	190.2	178.17	12.0		2+16 ²	2+99 ⁵	C27800	2323	Charlotte	9-9-71	
	3+00	190.4	178.47	11.9		3+16 ³	3+56 ²	C34520	2343	FARMSTEAD	8-25-72	
	4+00	190.5	178.77	11.7		3+82 ²						
	4+46 ⁶	190.5	178.91	11.6		Plugged						
	4+46 ⁶	End 8" V.C.P										
LINE NO. 2	0+00	191.5	180.80	10.7	sta. 0+00 LINE NO. 2 = sta. 3+16 LINE NO. 1							
	1+00	191.5	181.20	10.3		0+23 ²	0+25 ²	C21796	2322	Charlotte	11-16-70	9-9-71
						0+89 ²	0+87 ²	C27803	2337	Farmstead	9-9-71	
	1+00	191.5	181.20	10.3		0+88 ⁴	0+87 ²	C19356	2318	Charlotte	5-18-70	
						1+65 ⁴	1+82 ²	C15639	2314	Charlotte	8-28-69	
	2+00	192.4	181.60	10.8		2+07 ⁴	2+07 ⁴	C62486	2325	Farmstead	8-9-77	
		193.2	181.86	11.3	2+64 ⁴	4" stub W		C32405	2317	Farmstead	5-22-72	
	3+00	193.6	182.01 out	11.6		2+79 ²		C13687	2310	Charlotte	4-22-69	
		182.11 in	11.5	3+01 ⁵				12421	2313	Farmstead	10-30-84	
						3+65 ⁵	3+23 ²	C26228	2306	Charlotte	8-6-71	5-4-70
	4+00	193.8	182.50	11.3		3+63 ¹	3+92 ⁴	C19082	2305	Farmstead	4-2-69	
						4+61 ²	4+59 ²	C13369	2314	Lansom	1-25-71	4-14-70
	5+00	192.6	182.90	9.7				C22671	2310	Lansom	1-25-71	4-14-70
		192.6	183.00	9.6	EXIST'G M.H.	5+27 ²						
LINE NO. 3	0+00	193.5	184.00	9.5	sta. 0+00 LINE NO. 3 = sta. 2+64.4 LINE NO. 2							
		193.5	184.06	9.4	0+53 ²	4" stub E.						