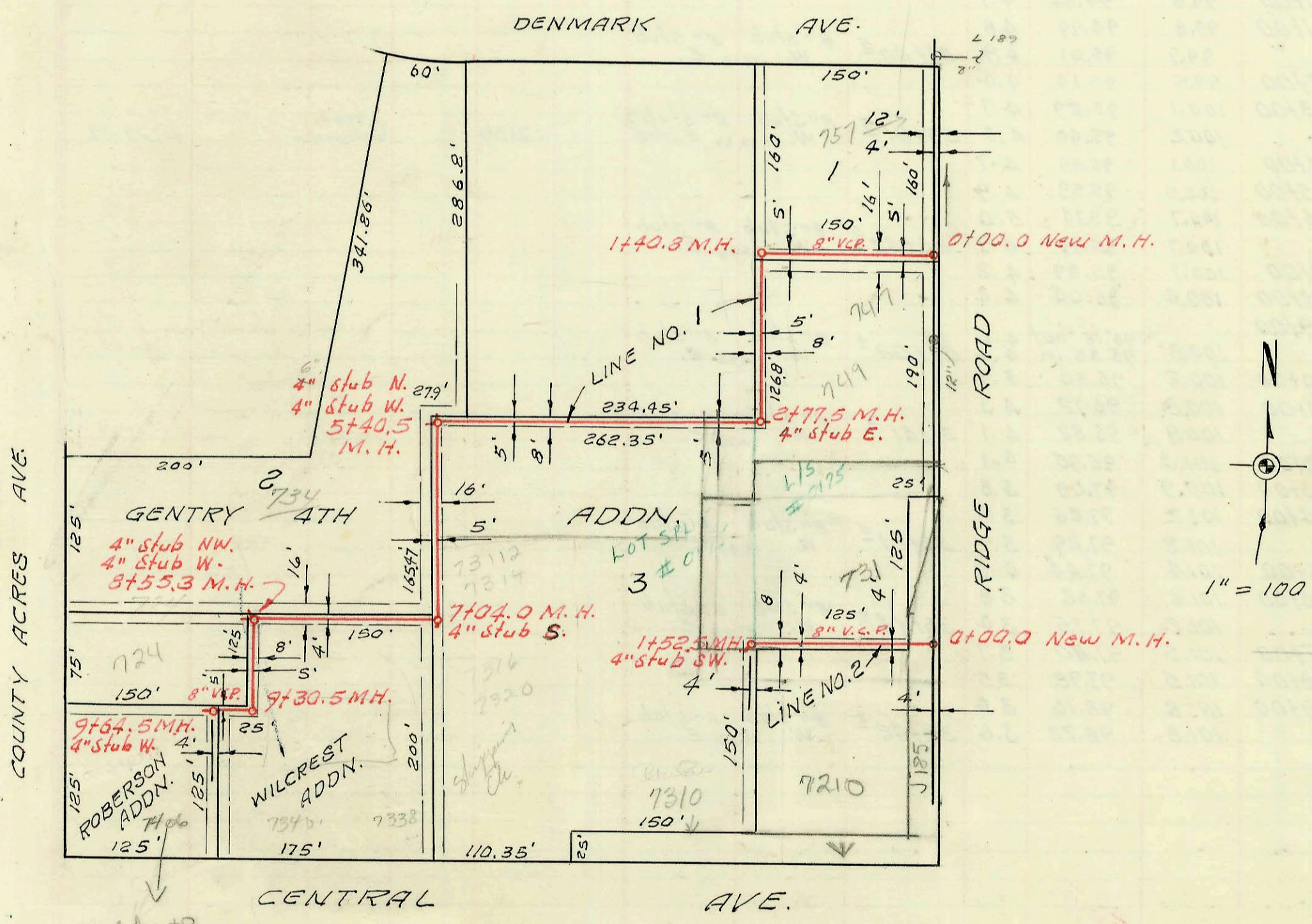


LAT. 2, SUB. 18, S. S. NO. 22
 W. B. CARTER CONST. CO. INC.
 PROJ. NO. C 27-11 BK U.K. # 3
 AUG. 7, 1967



Refer to J181. This Bldg's sewer line runs along SCL access N along rear of 701 County Acres and taps into S. end of M.H. Sta. 2+43.0

LAT. 21, WESTLINK SEWER
 W. B. CARTER CONST. CO. INC.
 PROJ. NO. C27-16 BK. U.K. # 3
 OCT. 5, 1967

CONSTRUCTION RECORD						SERVICE RECORD						
STATION	ELEVATION		Depth	MANHOLE	4-INCH "Y" BRANCHES		No. of Permit		House Number		DATE OF PERMITS	
	Ground	Grade			North West	South East	North West	South East	North West	South East	North West	South East
0+00	101.4	96.92	4.5	0+00.0 Exist'g M.H.								
0+05 ²	101.4	96.92			0+33 ²	0+35 ²	C40101		2627 Hadden		1-12-79	
1+00	101.4	97.12	4.3		0+98 ⁵	0+94 ⁵	C61670	C8237	2619 Hadden	2620 Crawford	6-17-77	5-10-68
2+00	101.2	97.32	3.9		1+59 ²	1+46 ¹						
2+00	101.2	97.32	3.9		1+91 ⁵		C70957		2609 Hadden	2608 Crawford	1-13-92	4-2-79
3+00	101.1	97.50	3.6	2+89 ²	2+18 ⁵	2+45 ²	91-36225-7 10093 C30971		2602 Hadden		8-19-91 2-1-84 3-14-72	
3+00	101.1	97.50	3.6		2+57 ⁵	3+09 ⁵						
4+00	101.0	97.72	3.3		3+36 ⁴	3+58 ⁵						
4+00	101.0	97.72	3.3		3+75 ²	4+30 ⁵	00935	C70952	2595 Hadden	2514 Crawford	7-29-91	4-2-79
5+00	101.3	97.92	3.4		4+18 ²	4+69 ³	C70094		2501 Hadden		1-12-79	
5+00	101.3	97.92	3.4		4+62 ²	4+69 ³						
5+00	101.2	98.10	3.1	5+88 ⁶	5+16 ³	5+18 ³	C14556		2501 Hadden	2508 Crawford	6-18-68	4-2-79
5+00	101.2	98.10	3.1		5+65 ⁶	5+67 ⁶						11-15-78
LINE # 1	0+00	128.2	123.80	4.4	0+00.0 New M.H.	0+63 ²		28845		747 N Ridge Rd		4-4-89
1+00	130.7	124.30	6.4		0+47 ²	1+00 ²						
1+00	130.2	124.61 in	5.6	1+40 ²					757 N Ridge Rd		10/29/92	11-18-69
2+00	130.9	124.90	6.0		2+08 ⁵							
2+00	131.6	125.29 out	6.3		2+19 ²	4" stub E						
2+00	131.4	125.39 in	6.2	2+77 ⁵								
3+00	131.4	125.50	5.9		3+73 ⁵	3+51 ²						
4+00	131.3	126.00	5.3		4+89 ³							
5+00	131.4	126.50	4.9	6" MH TAP	5+40 ⁵	4" stub N.	C40132		734 Country Acres - Bldg 41		7-19-73	
5+00	134.7	130.40 in	4.3		4" stub W.		C40135		734 Country Acres - Bldg 3		7-19-73	
6+00	141.2	131.66	9.5	tap	6+76 ²		C40136		734 Country Acres - Bldg 2		7-19-73	
7+00	141.7	133.86 out	7.8	tap	7+04 ²	4" stub S.	C40139		734 Country Acres - Bldg 1		7-19-73	
7+00	141.7	137.40 in	4.3		7+38 ²	7+40 ²	C5006		734 Country Acres - Bldg 1-C		7-19-73	
8+00	155.4	139.40	16.0		8+55 ³	4" stub NW.	C40137		734 Country Acres - Bldg 1-A		7-19-73	
8+00	155.3	140.55 out	14.7		4" stub W.		C4964		734 Country Acres - Bldg 1-B		7-19-73	
9+00	155.3	145.15	10.1		9+30 ⁵	9+41 ⁵	C40138		734 Country Acres - Bldg 1-C		7-19-73	
9+00	152.4	145.88 out	6.5		9+64 ⁵	4" stub W.	SWR 1999-00463		734 Country Acres - Bldg 1-C		8-19-91	
9+00	153.7	146.59	7.1						734 Country Acres - Bldg 1-C		7-15-79	8-25-79
LINE # 2	0+00	129.0	125.80	3.2	0+00.0 New M.H.	0+67 ²						
1+00	134.4	128.00	6.4		1+39 ²	0+69 ²	C70497		731 Ridge Rd		3-7-79	6-12-95
1+00	135.5	129.10	6.4	1+52 ⁵	4" stub SW.				731 Ridge Rd		8-10-83	
SWR 1999-00463												

tap 70102 - 2628 Crawford - 4-12-79 (0+54) 94-133377 8-22-94 7210 W Central Car Wash Bldg only - 510 with 4" PVC cap 2' off eye - (50PV. STA. conn to main remains)

95-84167 6-12-95 7210 W Central (old seen sta) 510 to off main at sta 1+14.0.

95-101077 7-6-95 731 W Ridge Rd (total car wash) 710 W Central 510 to off main at sta 1+14.0. 4" sch 40 PVC