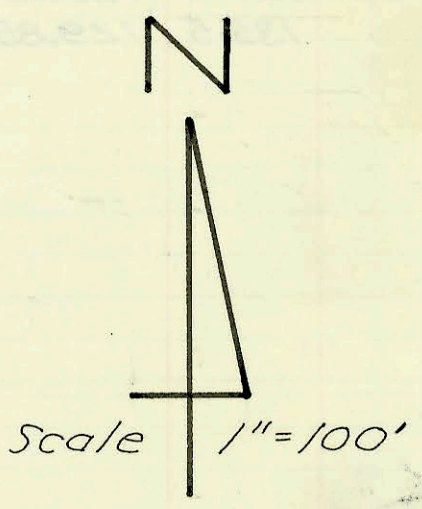
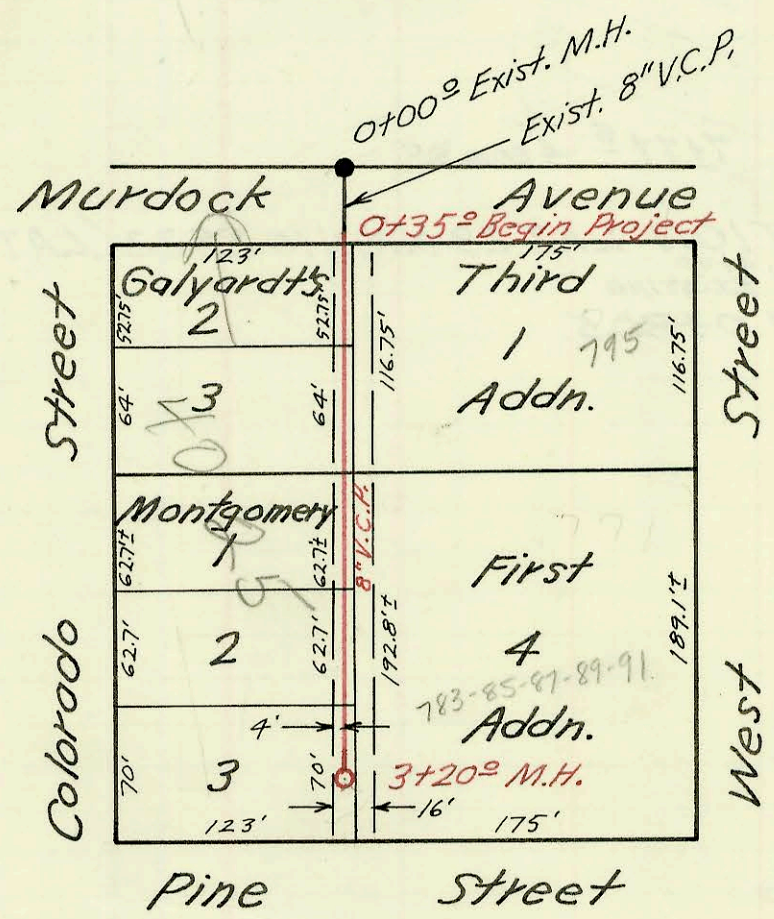


LAT. 4, SUB. 21, S. S. NO. 22
 MID-STATES CONST. CO.
 PROJ. NO. C25-24 BK. K-88
 SEPT. 26. 1967



Laterals 186, Sub. 5, S.S. No. 22
 W.B. Carter Const. Co., Inc. July 1968
 Proj. No. C 24-45 Bk. J.K.#9 8-26-68

CONSTRUCTION RECORD

SERVICE RECORD

LINE NO. 1

LINE NO. 2

LINE NO. 3

STATION	ELEVATION		Depth	MANHOLE	4-INCH "Y" BRANCHES		No. of Permit		House Number		DATE OF PERMITS		
	Ground	Grade			North West	South East	North West	South East	North West	South East	North West	South East	
0+00	132.3	127.20	5.1	New M.H. 0+00.0									
	132.3	127.25	5.0	0+27.0									
1+00	133.0	127.40	5.6		0+59 ^o			2000-02543 C22068	3902 R Amidon		11-20-00	12-7-70	
					1+33 ^o	1+15 ^o		C5031	3908 Amidon	1752 Nottingham		9-27-67	
					1+98 ^o	1+91 ^o		C5032	3914 Amidon	1740 Nottingham Ct.		9-27-67	9-27-67
2+00	133.0	127.60	5.4										
	133.4	127.74	5.7	2+72 ^o									
					2+95 ^o	2+80 ^o		C11936	3920 N. Amidon	1734 Nottingham		3-5-68	12-11-68
3+00	133.3	127.80	5.4										
					3+74 ^o	3+72 ^o		C15415	3926 Amidon	1728 Nottingham		8-15-69	
4+00	133.7	128.00	5.7										
					4+66 ^o	4+26 ^o		C10900	3932 Amidon	1728 Nottingham		5-14-70	10-11-68
5+00	134.1	128.20	5.9										
	134.3	128.25 out 128.35 in	6.0 5.9	5+26 ^o									
					5+41 ^o			C24383	1725 W. 39 th St. No.			5-17-71	
					5+97 ^o			C52938	1717 W. 39 th St. No.			12-29-75	
6+00	134.2	128.65	5.5										
	134.4	129.01	5.4	6+92 ^o				C40267	1709 W. 39 th St. No.			7-25-73	
LINE NO. 2	0+00	134.3	6.0	0+00 LINE NO. 2 = 5+26 ^o LINE NO. 1									
					0+23 ^o								
	134.1	128.58	5.5	0+60 ^o				C5085	3940 N. Amidon			10-3-67	
LINE NO. 3	0+00	131.8	3.8	New M.H. 0+00.0									
	131.7	128.08	3.6	0+17.0									
					0+46 ^o								
								C8172	1706 Nottingham			5-6-68	
1+00	133.6	128.24	5.4										
					1+08 ^o	0+64 ^o							
					1+41 ^o	1+27 ^o		C5034	1710 Nottingham	1725 Nottingham		9-27-67	
						1+83 ^o		C23630	3931 Nottingham			4-7-71	
								C34425	3931 Woodrow			8-22-72	
2+00	133.9	128.44	5.5										
						2+84 ^o		C26296	3941 Woodrow			8-10-71	
3+00	133.9	128.64	5.3										
					3+01 ^o			C5033	1718 Nottingham			9-27-67	
4+00	134.0	128.74	5.3	3+50 ^o									
	134.0	128.84	5.2										
					4+04 ^o	4+02 ^o		C40268	1703 W. 39 th St.	3951 N. Woodrow		7-25-73	9-5-74
5+00	133.8	129.04	4.8										
5+10 ^o	133.9	129.06	4.8										
5+10 ^o	End 8" V. C. P.												
Lateral 186, Sub. 5, S.S. No. 22													
0+00	123.5	116.43 out 116.60 in	7.1 6.9	Exist. M.H. 0+00 ^o									
					0+65 ^o	0+82 ^o							
1+00	123.6	116.93	6.7										
					1+145 ^o	1+71 ^o							
					1+73 ^o								
2+00	123.0	117.33	5.7										
					2+42 ^o	2+40 ^o		C9862817 C40026	783-85-87 84-91 N. West			4-21-98 7-12-73	
3+00	122.1	117.73	4.4										
					3+07 ^o	3+05 ^o							
	122.2	117.81	4.4	3+20 ^o									

Top # C42013 - 4045 N. Murdoch - 11-1-73 - for faulting (2+23.8) N of 3+20 M.H.
 2nd # C42014 " " " " (1+98.0) " "
 3rd # C42015 " " " " (1+50.9) " "