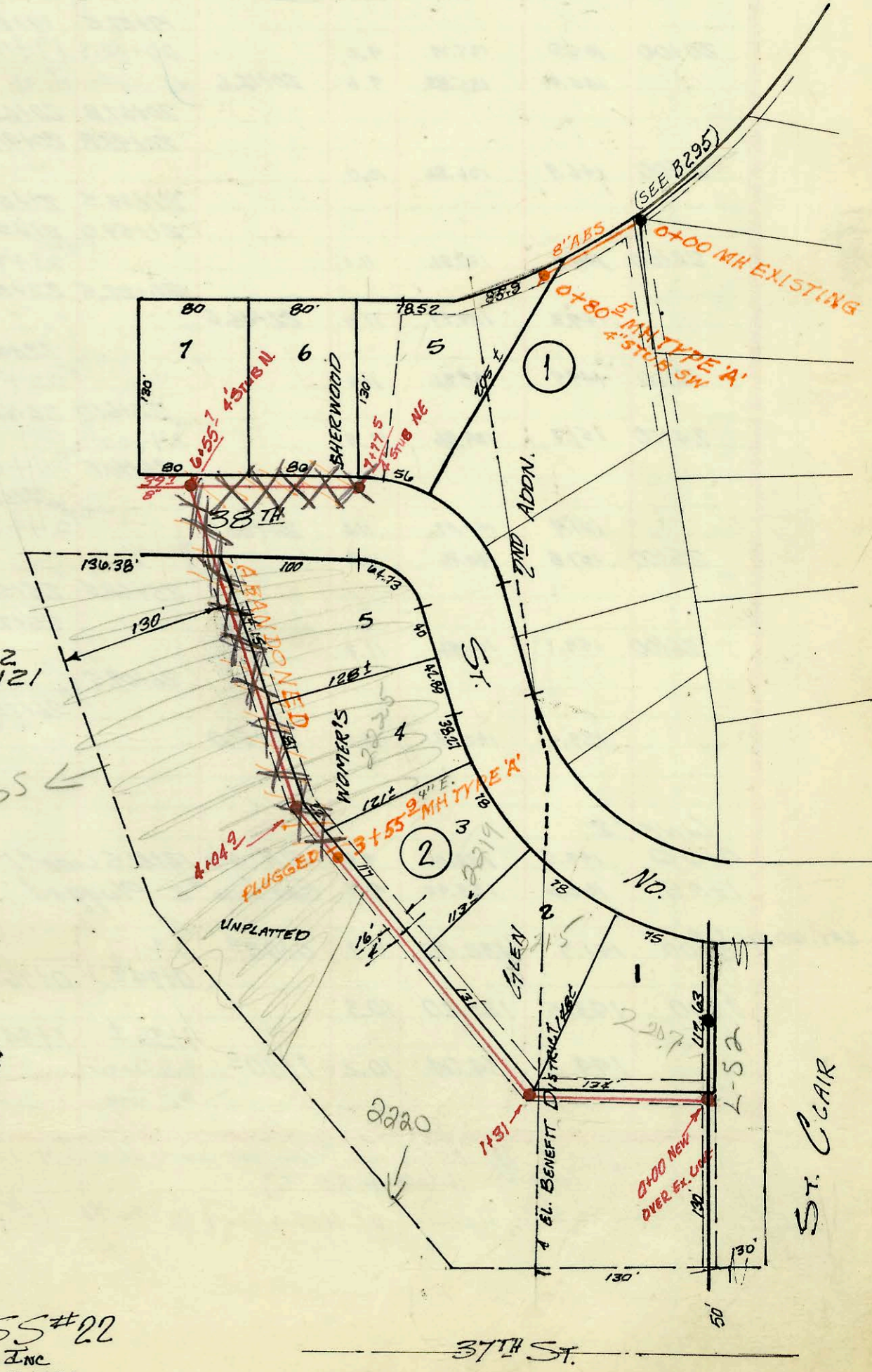


LAT. 29, SUB. 10, S.S. #22
 W.B. CARTER CONSTR. CO. INC.
 S.S. JK. 7 BOOKED 10-3-67
 PROJ. C27-32, LET 9-19-67

RECON OF PORTION LAT 29 MAIN 10 S.S. #22
 SHOULD BE RECON PORTION LAT 24 MAIN 21
 S.S. #22
 BUILT BY: UTILITY CONTR. INC
 PROJ. NO DAKR 500580
 BOOKED 3-22-78 FROM LES IF



LAT 24, MAIN 21, S.S. #22
 BUILT BY W.B. CARTER CONST CO. INC
 BOOKED 15 SEPT. 71 FROM K-101
 PROJ. No DBKL 571020

