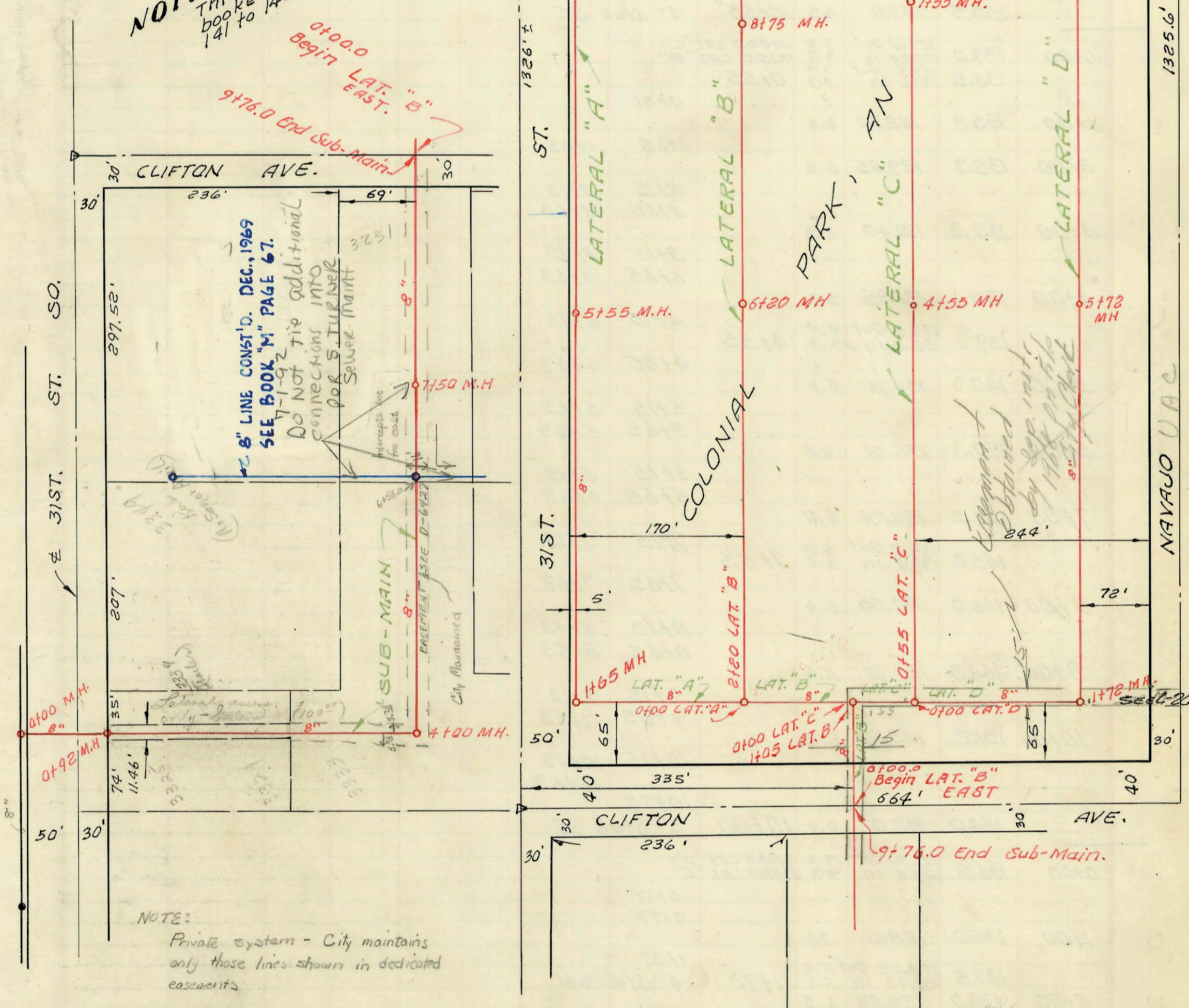


COLONIAL PARK MOBILE HOME COURT  
 SANITARY SEWER  
 F. H. A. PROJECT #102-00031-M  
 FILE NO 9-13-1-5  
 BOOKED "PER PLAN"  
 12-21-67  
 PRIVATE

NOTE: This project page  
 booked on 143  
 141 to 143 incl.



NOTE:  
 Private system - City maintains  
 only those lines shown in dedicated  
 easements

CONSTRUCTION RECORD

SERVICE RECORD

LATERAL "B"

LATERAL "C"

LATERAL "D"

STATION	ELEVATION		Depth	MANHOLE	4-INCH "Y" BRANCHES		No. of Permit		House Number		DATE OF PERMITS	
	Ground	Grade			North West	South East	North West	South East	North West	South East	North West	South East
5+00	139.3	131.92	7.4									
					5+27	5+25						
					5+75	5+77						
6+00	140.6	132.32	8.3									
	141.0	132.4 out 132.6 in	8.6 8.4	6+20								
					6+27	6+25						
7+00	143.0	134.00	9.0									
					7+73							
8+00	145.3	135.75	9.5									
					8+27	8+25						
					8+77	8+75						
9+00	147.2	137.5 out 141.0 in	9.7 6.2	9+00								
					9+27	9+25						
					9+77	9+75						
10+00	149.2	143.25	6.0									
					10+27	10+25						
					10+77	10+75						
11+00	151.8	145.50	6.3									
					11+27	11+25						
					11+77	11+75						
12+00	153.0	147.75	5.2									
	155.5	149.0	6.5	12+55°	12+27	12+25						
					4" stub SE							
0+00	137.0	127.18 out 127.28 in	9.8 9.7	0+00.0 LAT. "C" 1+05.0 LAT. "B"								
	136.5	127.5 out 127.6 in	9.0 8.9	0+55								
					0+61							
1+00	136.8	128.30	8.5									
					1+65	1+63						
2+00	135.7	129.85	5.8									
					2+15	2+13						
					2+65	2+63						
3+00	134.3	131.40	2.9									
					3+15	3+13						
					6+65	3+63						
4+00	138.1	132.95	5.2									
	139.3	133.8 out 134.0 in	5.5 5.3	4+55	4+15	4+13						
					4+65	4+63						
5+00	140.3	134.78	5.5									
					5+15	5+13						
					5+65	5+63						
6+00	137.3	136.51	0.8									
					6+15	6+13						
					6+65	6+63						
7+00	144.2	138.24	6.0									
	145.2	139.2 out 139.4 in	6.0 5.8	7+55	7+15	7+13						
					7+65	7+63						
8+00	146.0	140.56	5.4									
					8+15	8+13						
					8+65	8+63						
9+00	148.5	143.12	5.4									
					9+15	9+13						
					9+65	9+63						
10+00	151.2	145.70	5.5									
					10+15	10+13						
					10+74	10+63						
	154.0	148.0	6.0	10+90	4" stub SE							
0+00	136.5	127.5 out 127.6 in	9.0 8.9	0+00.0 LAT. "D" 0+55.0 LAT. "C"								
					0+17							
					0+77							
1+00	135.0	128.0	7.0									
	133.5	128.32 out 128.42 in	5.2 5.1	1+72	1+37							
					4" stub SW							
2+00	133.0	128.53	4.5									
					2+29	2+27						
					2+31							
						2+68						

