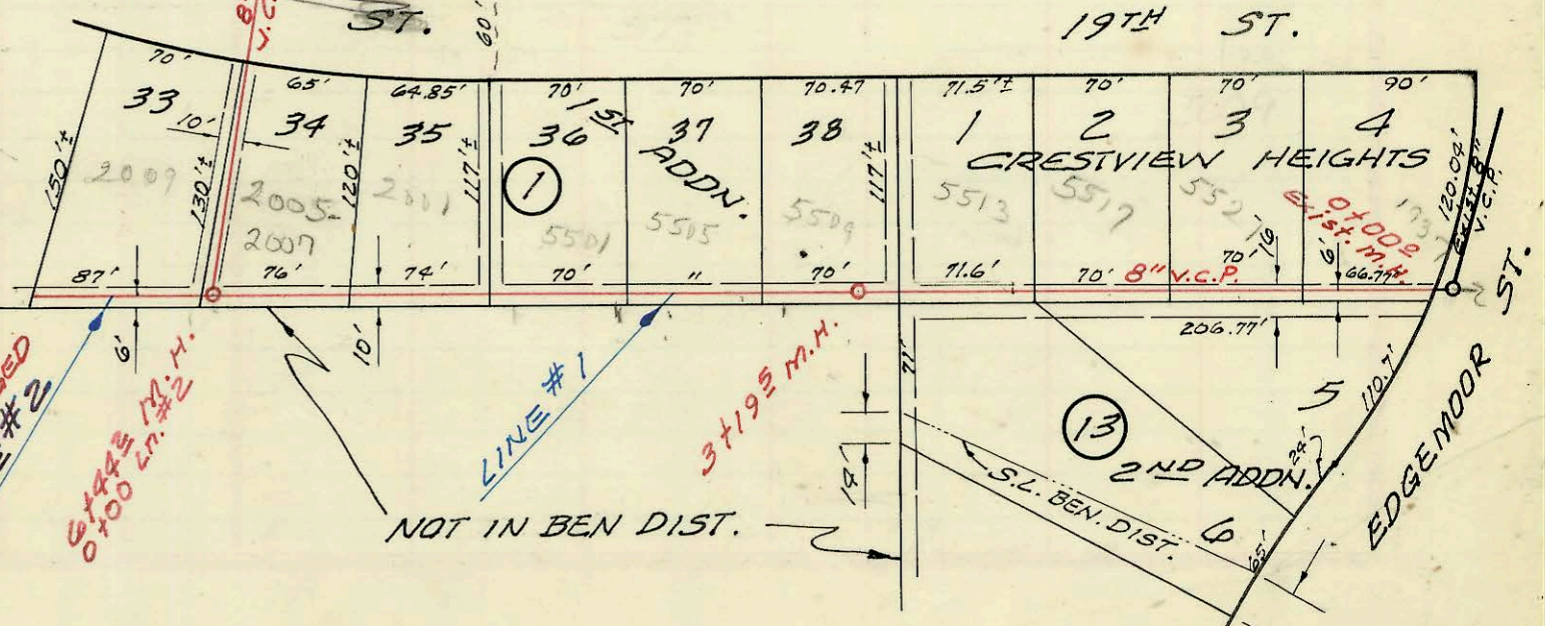
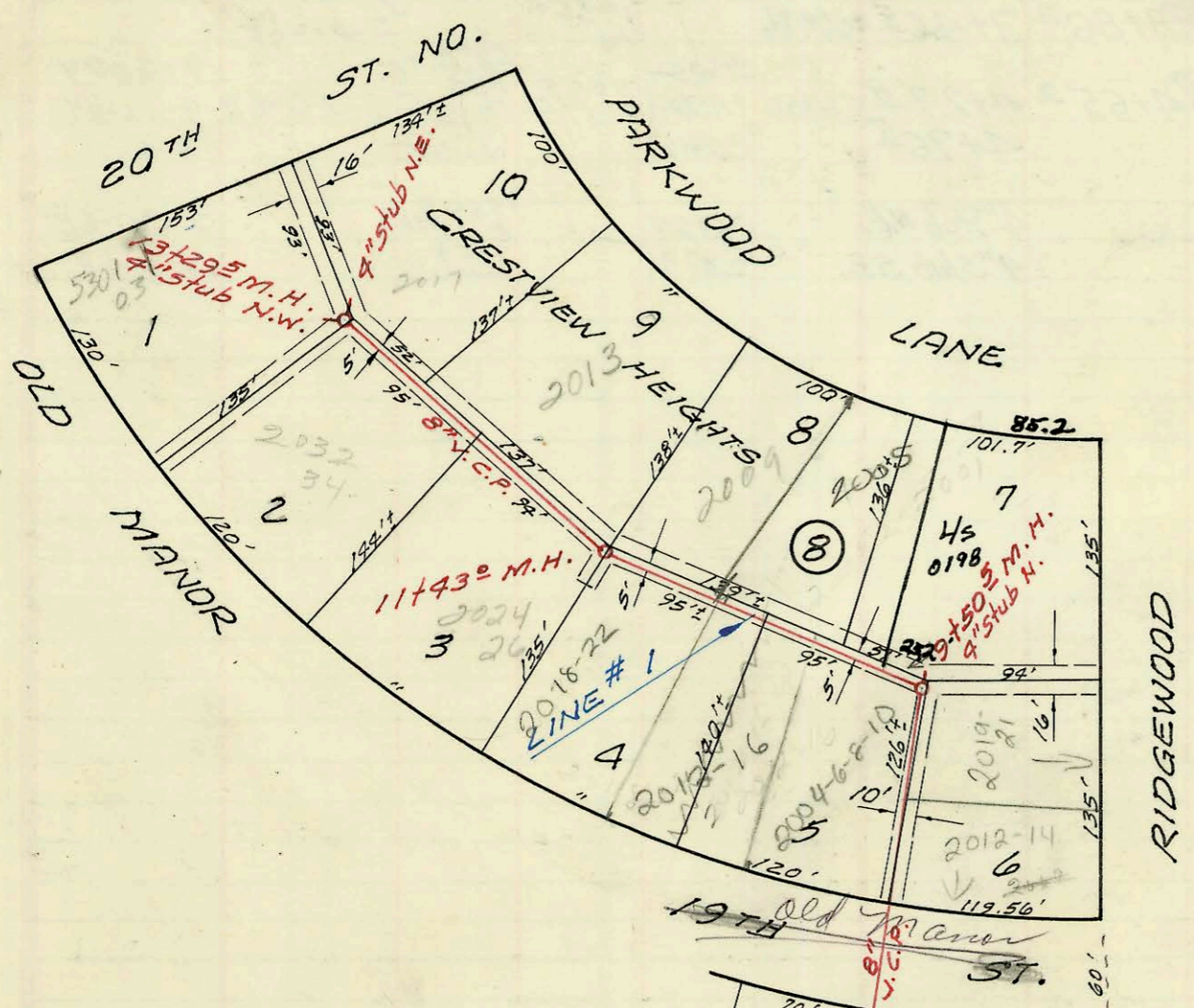


LATERAL 13, SUB. 5, S.S. 23
 UTILITY CONTRACTORS INC. JAN. 1968
 PROJ. NO. C26-92 K83A BOOKED 2-5-68

ON MAP



LAT. 7, SUB. 5, S.S. 23
 UTILITY CONTRACTORS, INC. (JAN. 1968)
 PROJ. NO. C26-36 BK. K-81 BOOKED 2-14-68

ON MAP

CONSTRUCTION RECORD

SERVICE RECORD

STATION	ELEVATION		Depth	MANHOLE	4-INCH "Y" BRANCHES		No. of Permit		House Number		DATE OF PERMITS	
	Ground	Grade			North West	South East	North West	South East	North West	South East	North West	South East
Line # 1	Lat 13 - Sub. 5, S.S. 23											
0+00	213.7	207.06	6.1	Exist. 0+00								
					0+33							
					0+86.8	0+60	C44303	C6767	2010 N. Elgin	5602 E. 19th	4-4-74	2-6-68
1+00	215.2	207.80	7.4									
					1+30		C45325		5605 E. 20th		6-14-74	
					1+48			C6887	5607 E. 20th	5606 E. 19th		2-15-68
2+00	215.8	208.60	7.2									
					2+13.4		C63434				10-10-77	
					2+29							
					2+66.4	2+42	C63435	C6888	5609 E. 20th	5610 E. 19th	10-10-77	2-15-68
3+00	217.2	209.40	7.8	3+00								
					3+38		C52460		5701 E. 20th		11-14-75	
					3+28.1		C65789		5701 E. 20th		4-7-79	
					4+34	4+36	C45323	C8103	5707 E. 20th	5706 E. 19th	6-14-74	5-1-68
5+00	219.3	211.00	8.3									
					4+86		C48469		5711 E. 20th		2-26-75	
					5+33	5+35		C6791		5710 E. 19th		2-5-68
6+00	218.7	211.80	6.9	6+02								
	218.7	in 211.90	6.8									
					6+30	6+32						
7+00	218.4	212.30	6.1									
	218.3	212.38	5.9	7+19	4" stub N.		C70462		8501 E. 20th		3-6-79	
							C62458		8501 E. 20th		9-20-78	
Line # 2	Lat 7, Sub 5, S.S. 23											
0+00	218.7	211.90	6.8	6+02 Ln #1								
	219.0	212.10	6.9	0+00 Ln #2								
				0+39								
					0+29.7							
					4" stub S.E.		C67178		2005 E. 20th		6-30-78	
							C6775		2005 E. 20th		2-6-68	
Line # 1	Lat 7, Sub 5, S.S. 23											
0+00	216.2	205.80	10.4	Exist. Proj. 0+05								
				0+23								
1+00	217.2	206.80	10.4									
					1+01		C59387		1934 N. Edgemoor		8-25-76	
					1+67		C54973		5521 E. 19th		4-26-76	
							C54972		5517 E. 19th		4-26-76	
2+00	217.8	207.80	10.0									
					1+93							
					2+40	2+42	C130317		5513 E. 19th		8-27-91	
3+00	218.9	208.80	10.1				C54970				4-26-76	
					3+05				5507 E. 19th		4-22-72	
				3+19								
					3+80							
4+00	220.6	209.56	11.0									
					4+51							
5+00	221.80	210.26	11.5									
					5+18		C66466		2001-03 E. 20th		5-18-78	
					5+98							
6+00	223.3	210.96	12.3									
	224.3	out 211.27	13.0	6+44								
		in 211.33	12.9									
7+00	222.9	211.76	11.1									
					6+80.2		C68261		2005-07 E. 20th		9-2-78	
8+00	219.5	212.46	7.0									
					8+95	8+93						
							23603		2009-21 E. 20th		7-26-89	
9+00	220.9	213.16	7.7									
	221.2	213.51	7.7	9+50	4" stub N.		C45540	18848	2001 N. Parkwood	2004-19 Parkwood	7-2-74	8-787
10+00	222.1	214.41	7.7									
					10+04		C6952		2005 N. Parkwood		2-20-68	
					10+30.6	10+66	C4694		2012-16 E. 20th		7-6-85	
					10+97							
11+00	224.6	216.01	8.6									
					11+16		C10889		2018-22 E. 20th		9-16-85	
					11+29				2009 N. Parkwood		10-11-68	
					11+43				2004 N. Old Mans		10-1-68	
					11+54		C10741		2006 N. Old Mans		10-1-68	
					11+70		C10742		2006 N. Old Mans		10-1-68	
12+00	225.3	217.61	7.7									
					12+16		C6953		2013 N. Parkwood		2-20-68	
					12+58		C9560		2032 N. Old Mans		7-11-68	
					12+90		C9561		2034 N. Old Mans		7-11-68	
13+00	227.3	219.21	8.1									
	227.8	219.71	8.1	13+29	4" stub N.W. 4" stub N.E.		C7053	C6372	5301-03 E. 20th	2017 N. Parkwood	4-15-68	2-13-68
Line # 2	Pipe plugged											
0+00	224.3	213.00	11.3	0+00 = 6+44 Line #1								
0+90	226.7	213.50	13.2									
					0+18		C66467		2009-11 E. 20th		5-27-78	