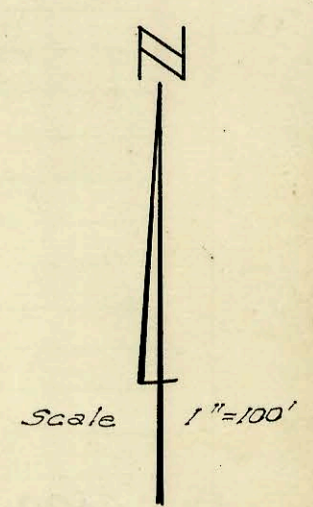
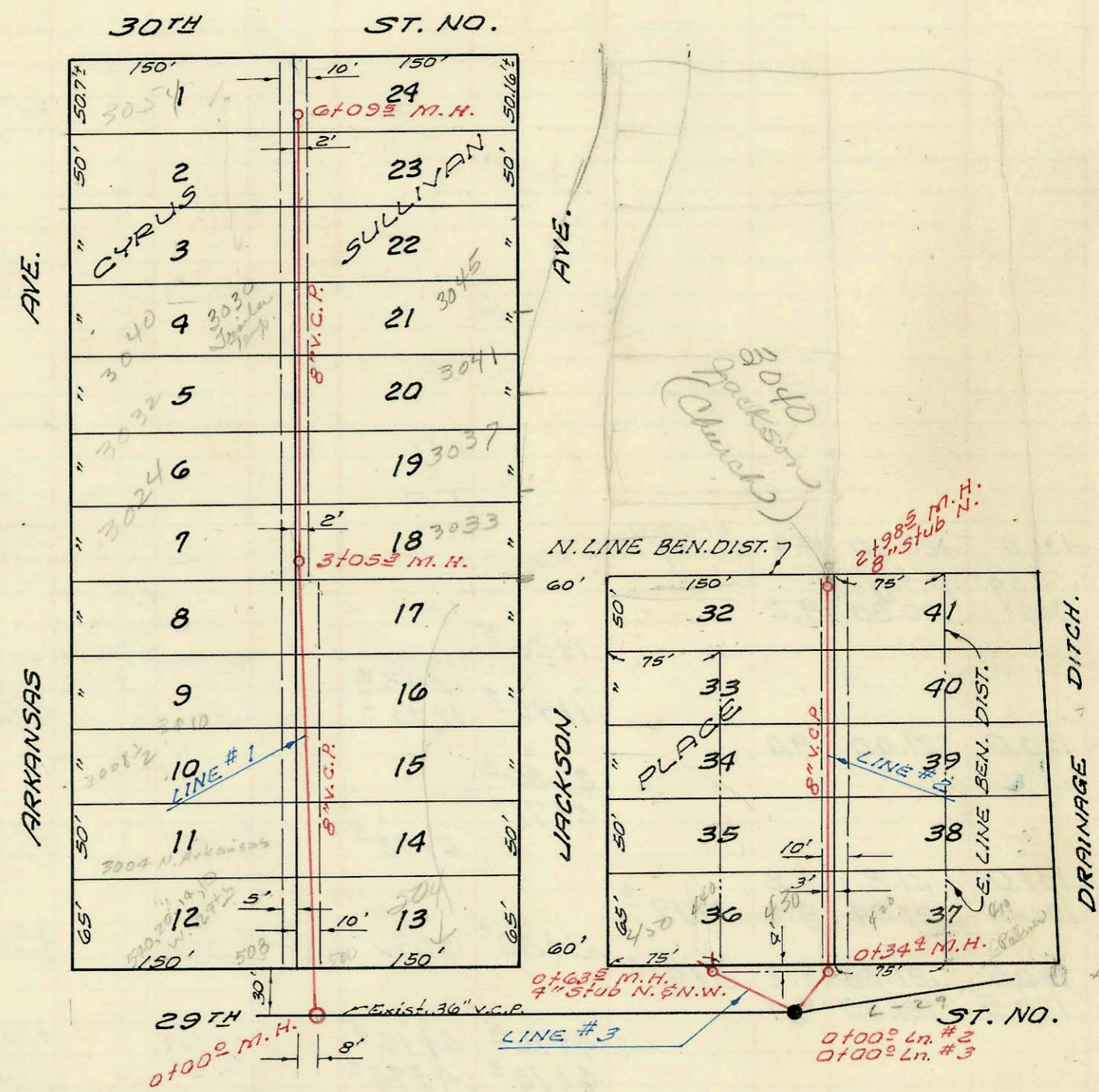


LAT. 199, SUB. 5, S.S. 22
 W. B. CARTER CONST. CO. INC. FEB. 1968
 PROJ. NO. C27-67 J.K.#7 BOOKED 3-9-68

Handwritten signature



LAT. 2, SUB. 4, S.S. 23
 W. B. CARTER CONST. CO. INC. FEB. 1968
 PROJ. NO. C23-54 K-87 BOOKED 3-9-68

Handwritten signature

CONSTRUCTION RECORD

SERVICE RECORD

STATION	ELEVATION		Depth	MANHOLE	4-INCH "Y" BRANCHES		No. of Permit		House Number		DATE OF PERMITS	
	Ground	Grade			North West	South East	North West	South East	North West	South East	North West	South East
Lat. 199, Sub. 5, S.S. 22												
0+00	128.8	121.25	7.5	Exist. 0+00 [±]								
1+00	128.8	121.45	7.3		0+23 [±]	0+25 [±]	C7285	C12957	1732 N. McComas	1731 N. Kessler	3-12-68	2-28-69
2+00	129.1	121.65	7.4		1+09 [±]	1+07 [±]	C10319	C12958	1748 N. McComas	1739 N. Kessler	9-4-68	2-29-69
	129.3	121.72 out 121.82 in	7.6 7.5		1+77 [±]	1+75 [±]	C10417	C22101	1748 N. McComas	1747 N. Kessler	9-9-68	12-9-70
3+00	130.5	121.95	8.5		2+35 [±]	4" stub N.W.			1756 N. McComas		12-23-70	
	132.5	122.12 out 122.22 in	10.4 10.3		2+93 [±]		C22328		1755 N. McComas		12-9-70	
4+00	132.8	122.31 out 122.41 in	10.5 10.4	3+83 [±] 4+30 [±]								
5+00	132.3	122.55	9.7		4+83 [±]				1756 N. Kessler		2-16-71	
	131.4	122.70 out 122.80 in	8.7 8.6		5+06 [±]	4" stub N.E.	C22944		1755 N. Westridge		7-30-70	
6+00	131.9	122.85	9.1		5+96 [±]	5+94 [±]	C12959		1748 N. Kessler	1747 N. Westridge	2-28-69	7-30-70
7+00	134.0	123.07	10.9	7+11 [±]	6+60 [±]	6+58 [±]	C22103	C15841	1740 N. Kessler	1739 N. Westridge	12-9-70	9-10-69
					7" stub S.W.	4" stub S.E.	C29358	C29359	1732 N. Kessler	1731 N. Westridge	12-9-71	12-9-71
Lat. 2, Sub. 4, S.S. 23												
0+00	128.70	121.33	7.4	0+00								
1+00	129.60	122.03	7.6		0+52 [±]	0+42 [±]	C7044		503 W. 29 th		2-27-68	8-14-69
					0+84 [±]		C1758	C20897	500 W. 29 th		9-9-70	
2+00	131.3	122.73	8.6		1+10 [±]	1+12 [±]	C7045		300, 29, 19 th 10 W. 29 th		2-27-68	
					1+70 [±]	1+50 [±]	C7046		3004 N. Arkansas		2-27-68	
					2+11 [±]	1+84.3 [±]	C7535	C10781	301 W. 29 th	504 W. 29 th	3-19-68	4-25-69
					2+10 [±]	2+08 [±]	C7534		3008 N. Arkansas		3-26-68	
					2+54 [±]	2+52 [±]					3-26-68	
3+00	132.1	123.96	8.6	3+05 [±]	2+91 [±]		C7310		3015 Jackson		3-14-68	
4+00	132.6	124.13	8.5		3+15 [±]	3+13 [±]	C12007	C167021	3033 Jackson	3037 Jackson	5-30-79	6-22-78
					3+59 [±]	3+57 [±]	C12006		3032 N. Arkansas		5-30-79	6-22-78
					4+19.3 [±]	4+19 [±]	C67022		3041 Jackson		6-22-78	
					4+09 [±]	4+07 [±]	C63494		3030 N. Arkansas		10-13-77	
5+00	132.8	124.83	8.0		4+57 [±]	4+55 [±]	C22088		3040 N. Arkansas		5-30-79	
					4+77.5 [±]	4+75 [±]	C63495		3045 Jackson		10-11-77	
					5+06 [±]	5+04 [±]						
					5+56 [±]	5+54 [±]	C9074		3054 N. Arkansas		8-26-83	
6+00	133.9	125.53	8.4		5+95 [±]	5+93 [±]	C72046		3047 N. Arkansas	515 W. 30 th	5-11-72	5-30-79
	133.9	125.60	8.3	6+09 [±]			C72089					
Line # 2												
0+00	127.6	120.21	7.4	0+00 [±]								
	128.9	120.30 out 120.40 in	8.6 8.5	0+34 [±]								
1+00	128.6	120.56	8.0		1+14 [±]	1+12 [±]	C9643	C9644	430 W. 29 th	420 W. 29 th	7-17-68	7-17-68
					1+97 [±]	1+95 [±]						
2+00	128.1	120.81	7.3		8" stub N.		11315		3040 N. Jackson		11-18-86	
	127.8	121.06	6.7	2+98 [±]								
Line # 3												
0+00	127.6	120.21	7.4	0+00 [±]								
	128.6	120.46	8.1	0+63 [±]	4" stub N.	4" stub N.W.	C14881		440 W. 29 th N.		7-10-69	

Tap C-72085-3024 N. Arkansas - 5-30-79 (3+12.6)