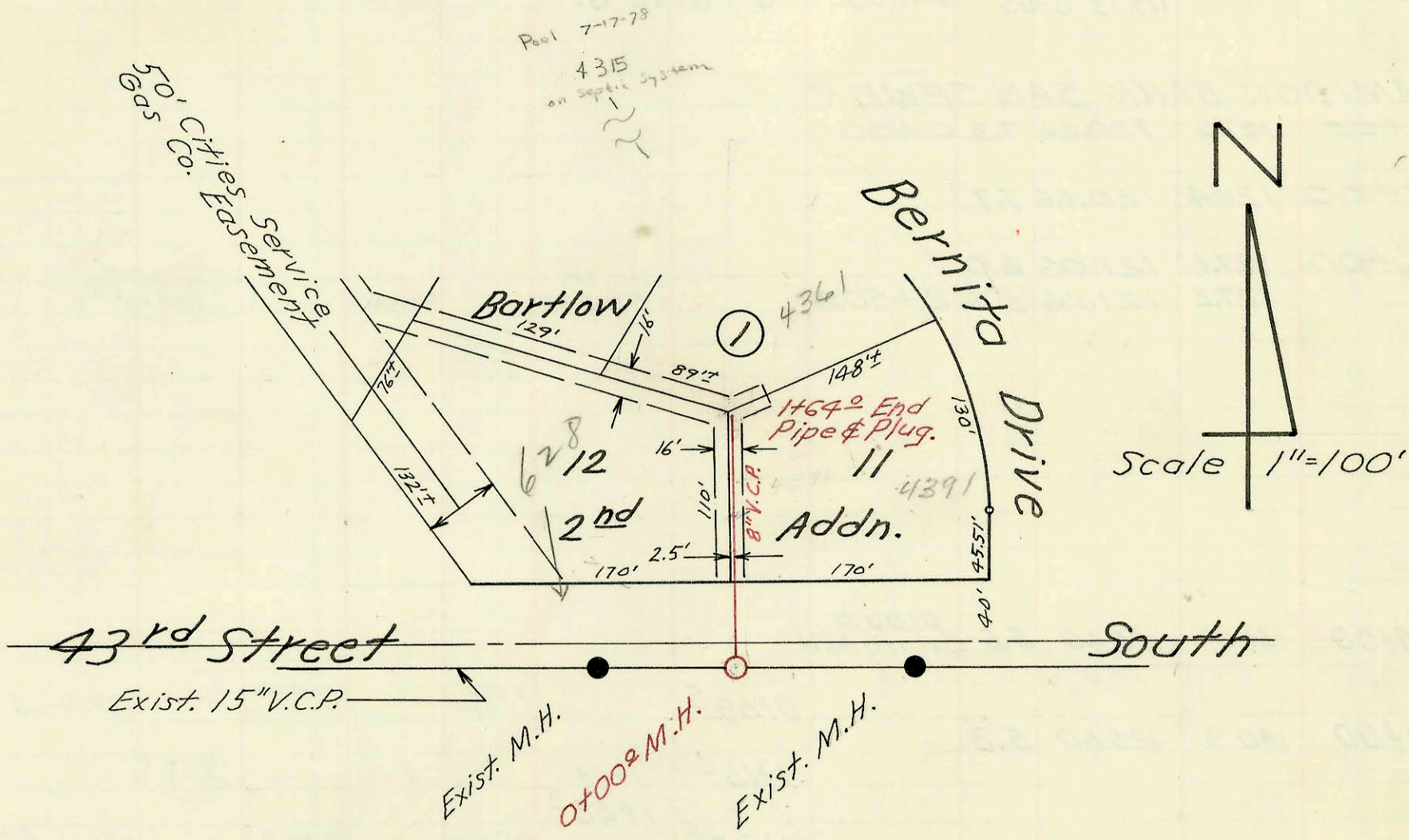


Inquiry concerning unplotted land to east of 1105 Main St. by 1-14-02

LAT. 11, DIST. R. S. S. NO. 20
 W. B. CARTER CONST. CO. INC.
 PROJ. NO. C27-70. BK. K 79-A
 JULY 24, 1968

ON MAP



Lateral 7, Glenville Sewer
 W. B. Carter Const. Co., Inc. Oct. 1968
 Proj. No. C 28-45 BK. J.K.#3 10-29-68

ON MAP

CONSTRUCTION RECORD

SERVICE RECORD

STATION	ELEVATION		Depth	MANHOLE	4-INCH "Y" BRANCHES		No. of Permit		House Number		DATE OF PERMITS	
	Ground	Grade			North West	South East	North West	South East	North West	South East	North West	South East
LINE NO. 1	0+00	119.8	111.90	6.9	0+00.0 New M.H.							
	1+00	119.6	112.15	7.4		1+07		C39108		1122-24 W. 13th		5-21-73
	2+00	118.8	112.35	6.4								
		118.2	112.41 out 5.8 112.51 in 5.7		2+24 ²							
	3+00	118.2	112.70	5.5								
						2+93 ⁴		C9263		#1133 W. 13th		6-23-68
						3+40 ⁵		C9267		#1115 W. 13th		6-25-68
	4+00	118.2	112.92 out 5.3 113.02 in 5.2		3+88 ⁸							
	5+00	119.0	113.04	5.0								
		118.0	113.29	5.7								
		118.0	113.38	4.6	5+33 ⁶	4" stub S. E.		C9266		#1105 W. 13th		6-25-68
LINE NO. 2	0+00	118.2	112.5	5.7	0+00.0 = 2+24.2 line No. 1							
	1+00	118.7	112.71	6.0								
		119.0	112.76	6.2	1+18 ⁸	4" stub S.W.		C9269		#1145 W. 13th		6-25-68

Lateral 7, Glenville Sewer

0+00	87.1	81.21 out 5.9 81.79 in 5.3	0+00 ²									
1+00	89.3	81.99	7.3		0+78 ⁵	0+80 ⁵		C19733 C13488		628 W. 43rd 43rd St. Kenilworth, N.J.	6-18-70	4-9-69
1+64	89.4	82.11	7.3	End Pipe & Plug								