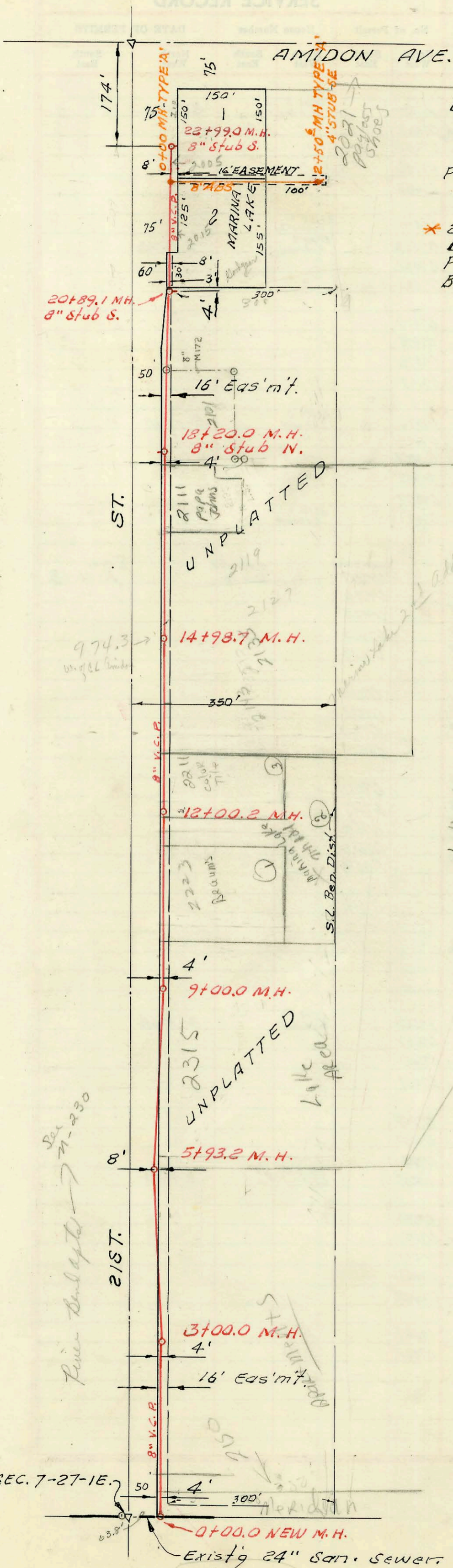


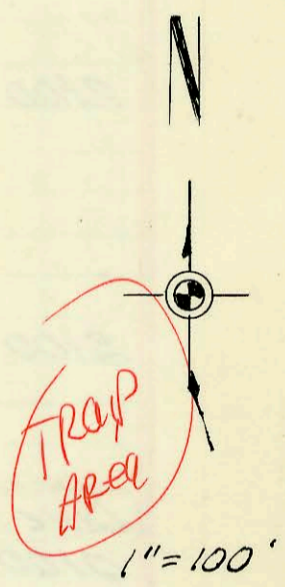
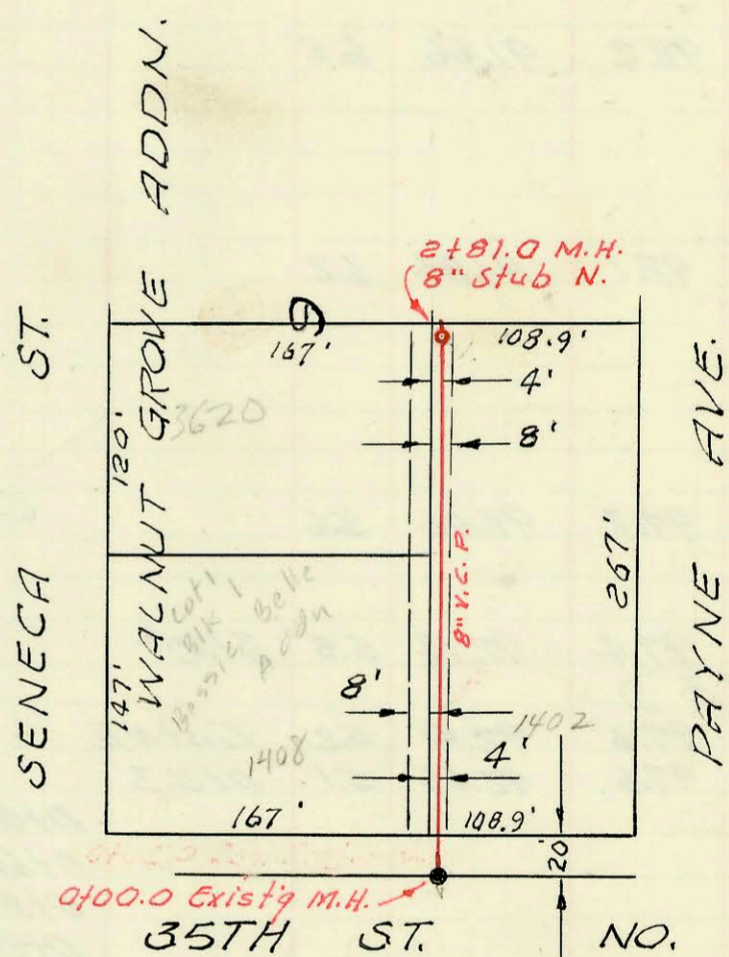
1" = 150'



LAT. 101, S. S. NO. 22  
 W. B. CARTER CONST. CO.  
 PROJ. NO. C27-49, BK. K-83A  
 3-19-68

\* 21ST & AMIDON BANK SAN SEWER  
 BUILT BY: WBCARTER CONST. CO.  
 PROJ. NO DBKW 707021  
 BOOKED 8-17-77 FROM LESB

1" = 150'



1" = 100'

LAT. 65, SUB 4, S. S. NO. 23  
 W. B. CARTER CONST. CO.  
 PROJ. NO. C28-10, BK. K-88  
 MARCH 25, 1968

ON MAP

NW COR. SEC. 7-27-1E.

Existg 24" San. Sewer.  
 See H-186

CONSTRUCTION RECORD

SERVICE RECORD

STATION	ELEVATION		Depth	MANHOLE	4-INCH "Y" BRANCHES		No. of Permit		House Number		DATE OF PERMITS	
	Ground	Grade			North West	South East	North West	South East	North West	South East	North West	South East
0+00	125.8	114.37	11.4	New M.H. 0+00.0								
1+00	123.5	114.57	8.9									
2+00	124.3	114.77	9.5									
3+00	125.9	114.97	10.9	3+00 <sup>o</sup>								
4+00	125.9	115.17	10.7									
5+00	125.3	115.37	9.9									
6+00	125.4	115.56	9.8	5+93 <sup>o</sup>								
7+00	125.4	115.77	9.6									
8+00	125.0	115.97	9.0									
9+00	124.6	116.17	8.4	9+00 <sup>o</sup>								
10+00	123.9	116.37	7.5									
11+00	123.6	116.57	7.0									
12+00	124.0	116.77	7.2									
13+00	124.7	116.97	7.7	12+00 <sup>o</sup>								
14+00	125.3	117.17	8.1									
15+00	125.7	117.37	8.3	14+98 <sup>o</sup>								
16+00	125.7	117.57	8.1									
17+00	126.3	117.77	8.5									
18+00	126.3	117.97	8.3									
19+00	126.7	118.17	8.5	18+20 <sup>o</sup>								
20+00	126.5	118.37	8.1									
21+00	126.4	118.59	7.8	20+89 <sup>o</sup>								
22+00	127.8	118.99	8.8									
23+00	127.2	119.39	7.8	22+99 <sup>o</sup>								
24+00	127.6	120.26	7.3	0+00								
25+00	128.4	120.66	7.7									
26+00	127.1	121.06	6.0									
27+00	127.2	121.26	5.9	2+50.6								
28+00	131.0	125.40	5.6	0+00.0								
29+00	130.9	125.60	5.3	0+69 <sup>o</sup>								
30+00	131.2	125.80	5.4	1+16 <sup>o</sup>								
31+00	131.5	125.96	5.5	1+95 <sup>o</sup>								
32+00				2+51 <sup>o</sup>								
33+00				2+81 <sup>o</sup>								

LAT. 101, S. S. NO. 22

LAT. 65, SUB. 4, S. S. NO. 23

2150 N Meridian Bldg 12 (morning) C45291 - 6-14-74 (2+81.2)  
 2150 N Meridian Bldg 4 (morning) C45270 - (1+12.7)  
 " " Bldg 5 " C45333 - (1+20.4)  
 " " Bldg 6 " C45328 - (3+75.7)  
 " " Bldg 7 " C45329 - (3+89.1)  
 " " Bldg 8 " C45332 - (3+78.7)

94-16937-7 10/18/94 2021 N Amidon -  
 Payless shoe store - 4" sch 40 PVC. (Removed  
 plus in mt 2+50.6)

98-21604-7 11-2-98 B2223 waist - NO TRASP  
 TURN IN.