

Q.K.T.A.?
SW 1/4 SE 1/4 Sec 36
T275-R1E.

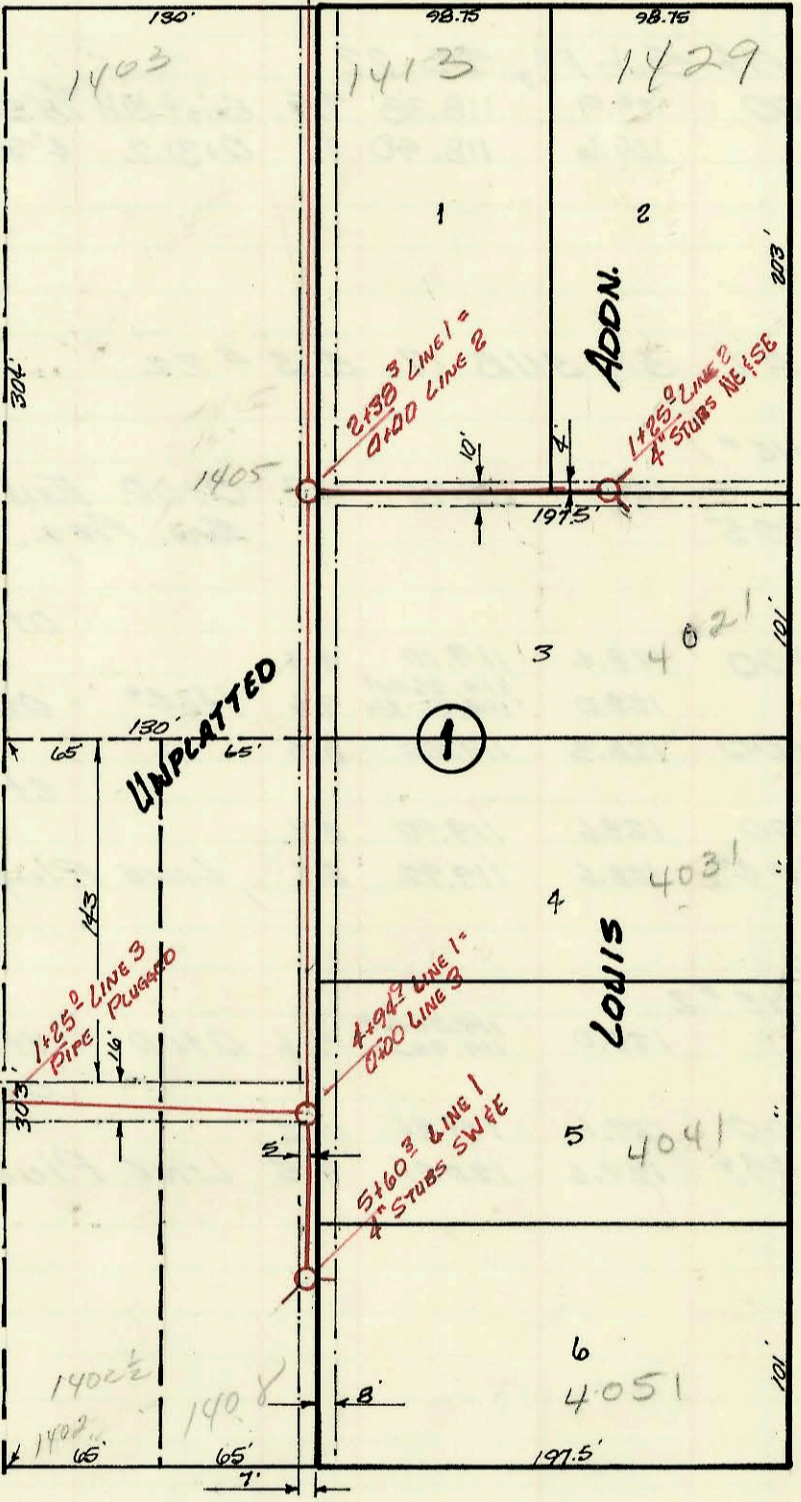
0+00 Exist Manhole

East Line NW 1/4 Sec 1-275-R1E

3+51.2 Top A Manhole

0+00 Exist MH
720' x 8' Stab

MAC ARTHUR RD.



ENGR. RESEARCH AND
 DEV. CENTER CESSNA
 AIRCRAFT CO.
 Utility Contr. Inc.
 Booked Apr. 23, 1968
 Private Proj. I.H. #1

O.N. map

7+00 Top A Manhole
8' Stab S. & 6" Stab S.E.

LAT 17, SUB 1, S.W.I.
 BUILT BY: MID-STATES CONSTRUCTION CO. INC.
 BOOKED: NOV 3, 1971 FROM B-Q &
 PROJECT NO DBKL 570039

O.N. map

CONSTRUCTION RECORD						SERVICE RECORD						
STATION	ELEVATION		Depth	MANHOLE	4-INCH "Y" BRANCHES		No. of Permit		House Number		DATE OF PERMITS	
	Ground	Grade			North West	South East	North West	South East	North West	South East	North West	South East
0+00	126.0	117.81	9.2	0+00	Exist. Manhole							
1+00	125.8	118.20	7.6									
2+00	126.1	118.60	7.5									
3+00	127.0	119.20	8.0									
	127.1	119.20	7.9	3+51 ^e								
4+00	127.2	119.40	7.8									
5+00	128.0	119.80	8.2									
6+00	128.2	120.20	8.0									
	128.2	120.60	7.6	7+00	6" stub SE	8" stub S.	C27118	C27118	1403 R 500 E Avenue	1413 MacArthur	1217187 11-30-71	4-11-60
LAT 17, SUB 1, S. WI												
Line 1												
0+00				0+00	EXIST MH 1/20" x 8" STUB S							
	86.4	76.90	9.5		ELEVATION OF END OF STUB S.							
1+00	87.0	77.10	9.9				19874 C27118	C27118	1403 R MacArthur	1413 MacArthur	1217187 11-30-71	11-30-71
2+00	87.5	77.30	10.2									
	87.5	77.37	10.1	2+38 ³	4" stub W = 0+00 Line 2		C29632		1405 E MacArthur		1217187 11-30-71	12-22-71
3+00	87.0	77.50	9.5									
4+00	86.3	77.60	8.7									
	86.7	77.89	8.9	4+94 ⁹	= 0+00 Line 3							
5+00												
	87.2	78.02	9.2	5+60 ³	1/4" stubs SW & E		C30093	C30122	1408 Selma	4051 Ellis	1-21-72	1-24-72
Line 2												
0+00	87.5	77.47	10.0	0+00	= 2+38 ³ Line 1							
1+00	86.4	77.87	8.5									
	86.2	78.01	8.2	1+25 ⁹	1/4" stubs NE & SE		C30880	C30121	1429 E Selma	4021 Ellis	2-2-72	1-24-72
Line 3												
0+00	86.7	77.99	8.1	0+00	= 4+94 ⁹ Line 1							
1+00		78.19										
		78.24			Line Plugged 1+25 ⁹							