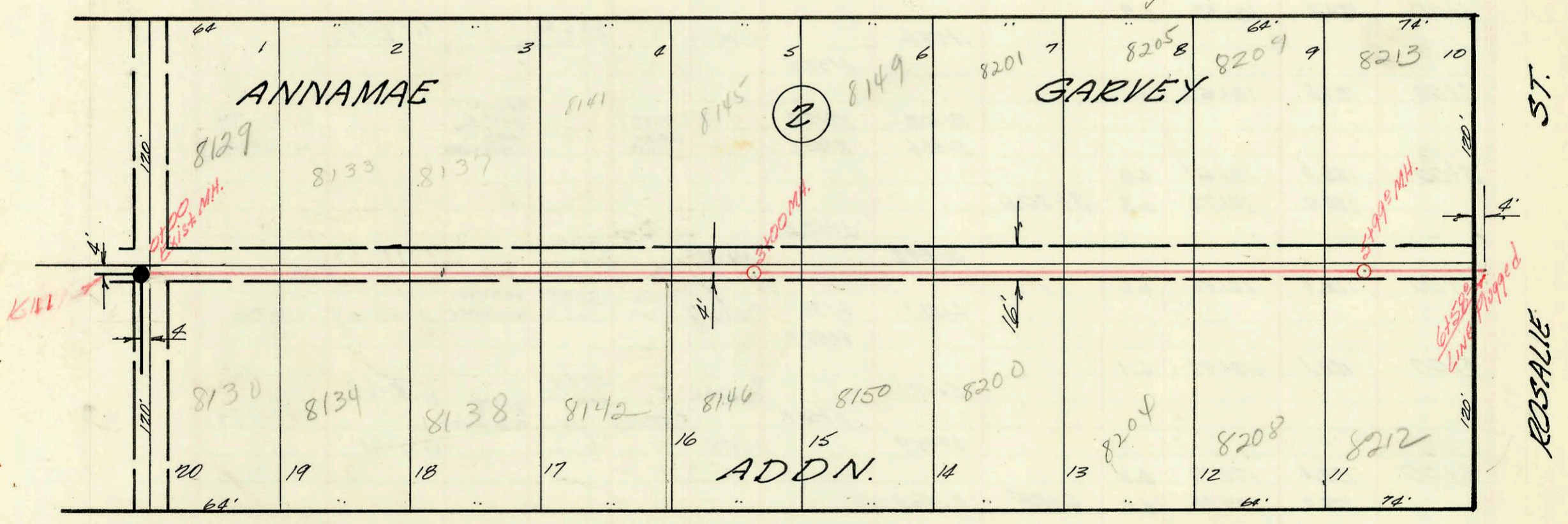


LAT 110 S.S. # 22  
 W.B. CARTER CONSTR. CO.  
 LET 4-16-68 BOOKED 5-28-68  
 PROJ C 28-14 33 J.K. # 7

on map

110'

GRAIL ST.



LAT 6, SUB 11, W.I.S.  
 MID-STATES CONSTR. CO.  
 PRIVATE PROJECT  
 BOOKED 6-13-68 I.H.G.

on map

